



GAINSBOROUGH GARDENS

HAMPSTEAD VILLAGE NW3



A CHARMING, GRADE II LISTED EARLY NEO GEORGIAN FAMILY HOUSE BUILT AND DESIGNED BY HORACE FIELD IN C1893; IT IS LOCATED WITHIN THIS HIGHLY COVETED, PRIVATE GATED ENCLAVE OF FAMILY HOUSES WHICH HAVE BEEN BUILT ON WHAT WERE THE PLEASURE GROUNDS OF HAMPSTEAD'S FIRST SPA.

GAINSBOROUGH GARDENS

HAMPSTEAD VILLAGE NW3

Offering spacious, well-kept accommodation, this wonderful property affords views of its own private gardens and the vast communal grounds from all of the principle rooms. The deceptively spacious accommodation features four to five reception rooms, including a wonderful two storey orangery style extension, a large bespoke hand crafted kitchen/breakfast room and five bedrooms. The property benefits from off street parking and a garage.





Accommodation & Amenities

- Reception Hall
- Guest Cloakroom
- Drawing Room
- Dining Room
- Orangery/Library
- Family Room
- Kitchen/Breakfast Room
- Study
- Utility Area
- Master Bedroom with Ensuite Bathroom
- 4 Further Bedrooms
- Family Bathroom
- Shower Room
- Private Front and Rear Gardens
- Exceptional Communal Gardens
- Garage
- Private Residents Parking
- EPC Rating E

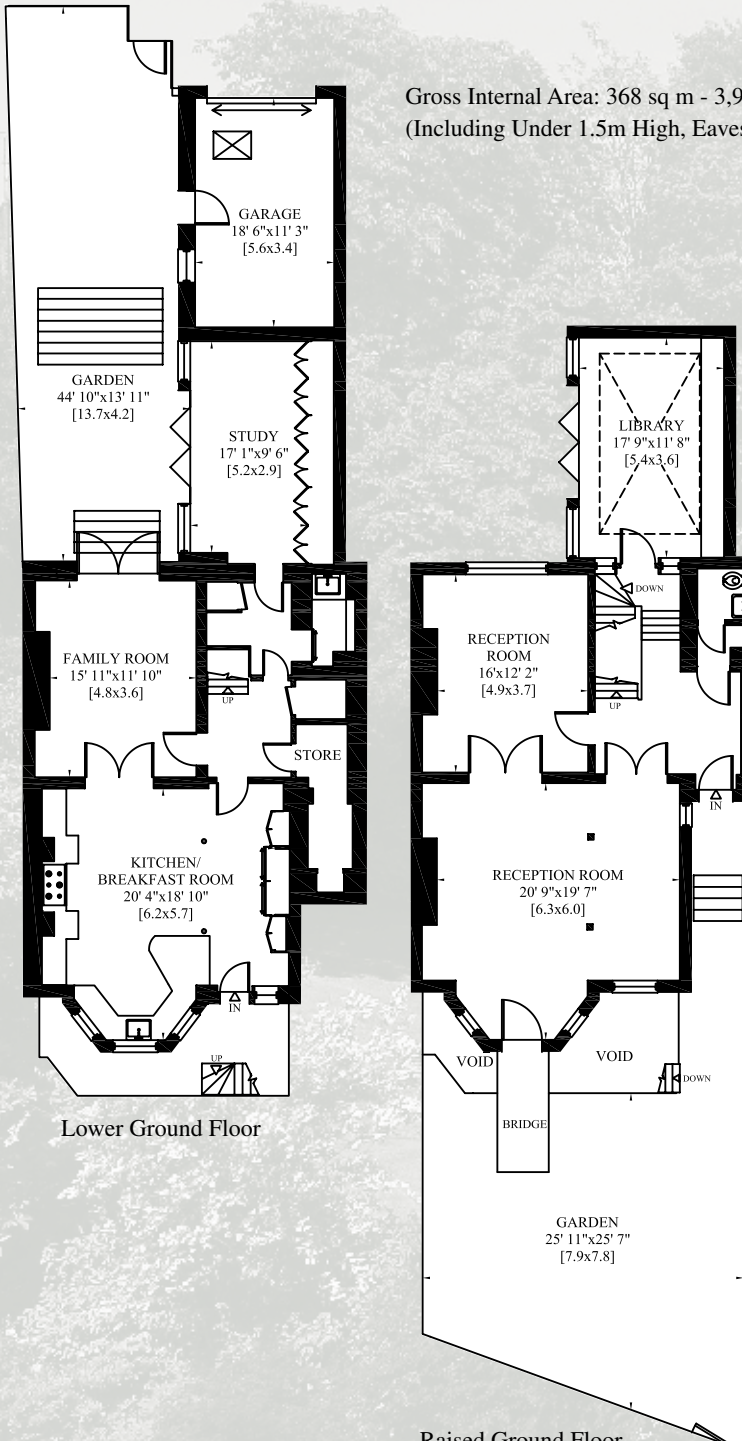
Terms

Tenure | Freehold

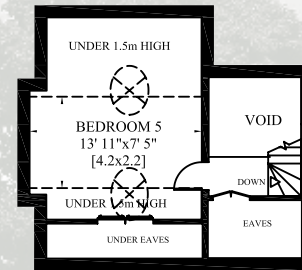
Price | Upon Application

Sole selling agent

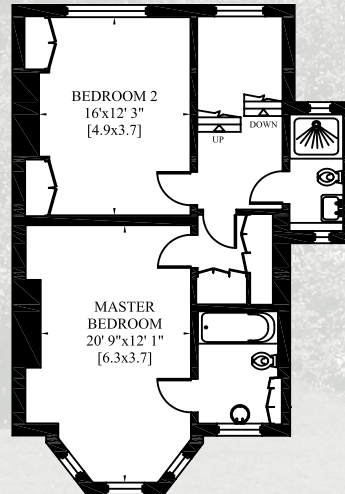




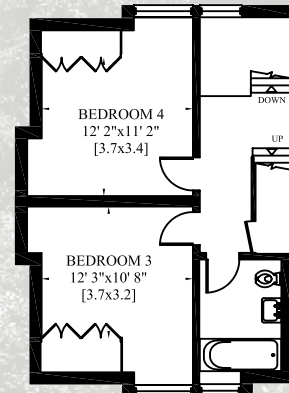
Gross Internal Area: 368 sq m - 3,965 sq ft
(Including Under 1.5m High, Eaves Tank, Under Eaves and Garage)



Third Floor



First Floor



Second Floor



RESIDENTIAL SALES & ACQUISITIONS

020 7431 0000

28 Church Row, Hampstead, London NW3 6UP
email: info@marcusparfitt.com www.marcusparfitt.com

Misrepresentation act 1967, this brochure and the descriptions and measurements herein do not constitute representation and whilst every effort has been made to ensure accuracy, this cannot be guaranteed.