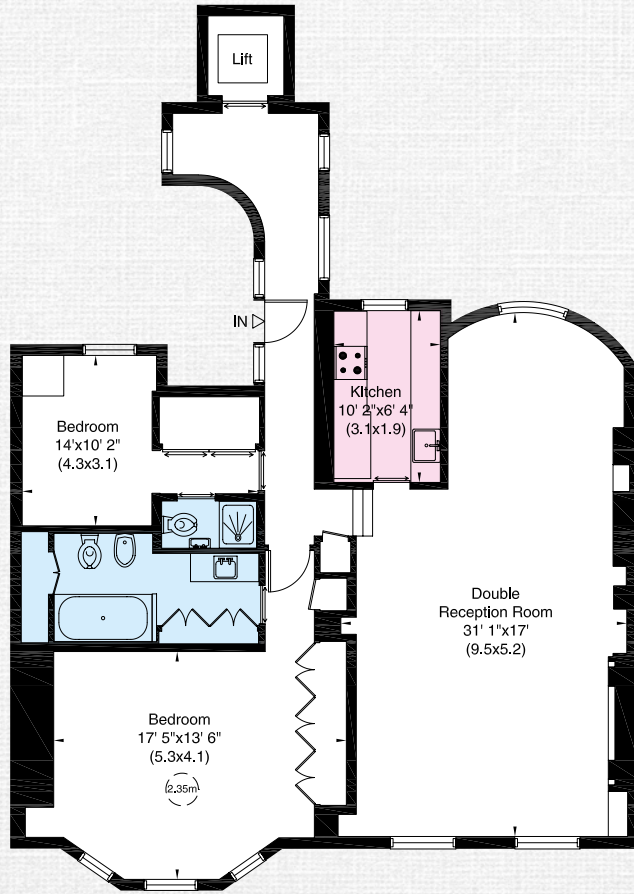




HANS PLACE LONDON SW1

APPROXIMATE GROSS INTERNAL AREA  
108 sq m - 1,167 sq ft



Third Floor



A BRIGHT LATERAL TWO BEDROOM FLAT SITUATED ON THE THIRD FLOOR OF THIS HANDSOME BUILDING OVERLOOKING THE GARDENS OF THIS PRIME KNIGHTSBRIDGE SQUARE.

The flat benefits from direct lift access and air conditioning throughout and is conveniently located moments from Harrods, Sloane Street and a short walk to Sloane Square.

ACCOMMODATION COMPRISES:

Two bedrooms, Two bathrooms, Double reception room, Kitchen, Air conditioning, Direct lift access, Entryphone, Access to communal gardens

TENURE | Leasehold: 989 years unexpired  
PRICE | £2,500,000 STC  
SERVICE CHARGE | Approximately £5,309 per annum  
GROUND RENT | Peppercorn

These details have been prepared for general guidance only and should not be relied upon by prospective purchaser/tenants who before proceeding must check and otherwise satisfy themselves as to the property and the nature, state and availability of any facility or service. 358261



**NVP**  
NICOLAS VAN PATRICK  
INCORPORATING  
HOBART SLATER

6-8 MONTPELIER STREET,  
LONDON SW7 1EZ  
+44 (0)20 7581 8277  
sales@nicolasvanpatrick.com  
www.nicolasvanpatrick.com