




Andrew Pearce
PINNER

BUCKLAND RISE, PINNER, MIDDLESEX HA5 3QS **£965,000**



A spacious, beautifully presented and extended four / five bedroom family home located in a highly sought after close.

This purpose built four bedrooms home is immensely spacious throughout with its free flowing ground floor that suits a growing family. The property has been immaculately maintained by the current vendors and has had several modern enhancements including a refitted kitchen, double glazed windows throughout and generally the property is well presented with neutral décor throughout.

Accommodation comprises; storm porch, guest cloak room, large entrance hallway with doors to; front aspect dining room with cupboards and bookshelf, lovely rear aspect lounge with a custom made bay window and door that overlooks the rear garden, fitted kitchen with a range of wall and base mounted units open to the breakfast room that has patio doors to the rear garden. In addition there is a generous sized study / family room which could also be used as a fifth bedroom with a door to the double length garage. Stairs to the first floor lead to four double bedrooms and a family bathroom. The master bedroom is a particular highlight with its balcony overlooking the rear garden, separate dressing area and an en suite shower room.

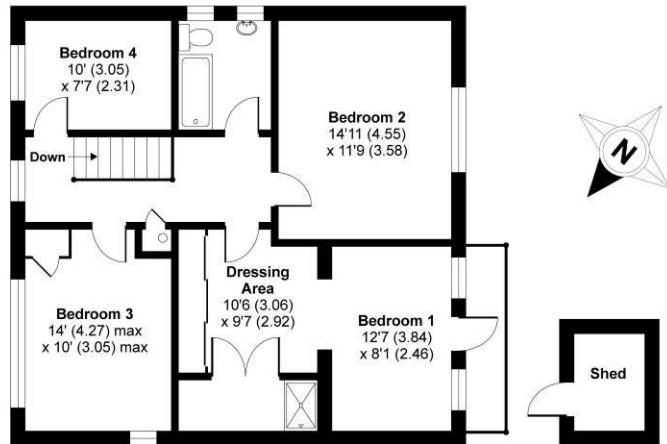


Outside the 112ft rear garden has been meticulously maintained with a large stone patio, great for entertaining and barbeques. The front garden has been beautifully block paved providing off street parking and there is ample on street parking.

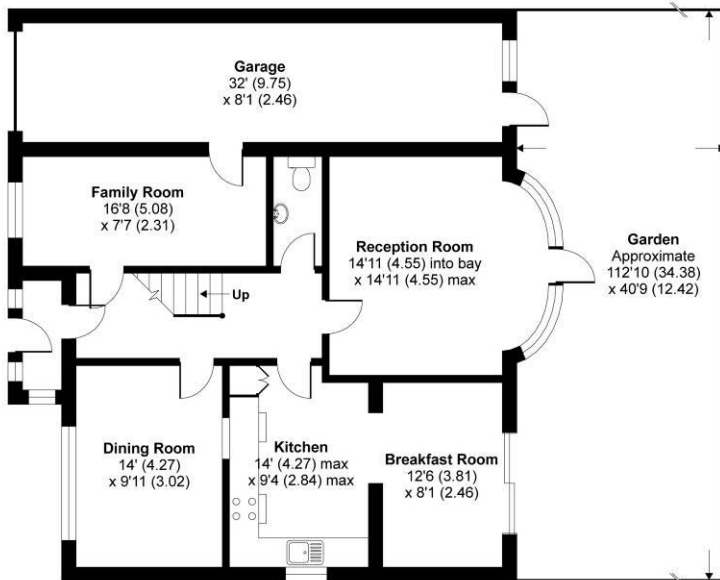
Buckland Rise is located in the Pinner Wood Park Estate, within a short walk of the hamlets of Pinner Village and Northwood offering easy transport links to Central London and the Home Counties via the Metropolitan Line. Hatch End Broadway Overground and the area's leading private and state schooling are also close by.

Buckland Rise, Pinner, HA5

APPROX. GROSS INTERNAL FLOOR AREA 2032 SQ FT 188.7 SQ METRES (EXCLUDES SHED & INCLUDES GARAGE)



FIRST FLOOR



GROUND FLOOR

Whilst every attempt has been made to ensure the accuracy of the floor plan contained here, measurements of doors, windows and rooms are approximate and no responsibility is taken for any error, omission or misstatement. These plans are for representation purposes only as defined by RICS Code of Measuring Practice and should be used as such by any prospective purchaser. Specifically no guarantee is given on the total square footage of the property if quoted on this plan. Any figure given is for initial guidance only and should not be relied on as a basis of valuation.

Copyright nichecom.co.uk 2017 Produced for Andrew Pearce REF : 178624



