

—
**Hunters
Green**

Waltham Chase
—

A collection of 2, 3, 4 & 5 bedroom homes
in a sought-after Hampshire village



Nestling in the gently rolling Meon Valley within easy commuting distance of Southampton, Winchester and Portsmouth, Hunters Green combines the luxury and modern convenience of a new Linden home, with the delights of living in a thriving Hampshire village, surrounded by gorgeous countryside.

The historic village of Waltham Chase is a traditional rural community, with a village shop and post office, a primary school, a well-used village hall and a local pub. Two miles away, the market town of Bishop's Waltham has an excellent choice of independent shops including cafes and boutiques and a butcher and grocers.

The major shopping centre of Hedge End is just over 5 miles away.

Road links are excellent via the M27, the M3 and the A3(M), while the nearest train stations are at Botley (3 miles) or Hedge End (6 miles). The bustling cities of Southampton (11 miles) and Winchester (12 miles) are close at hand.

Hunters Green

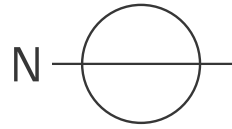
Sandy Lane, Waltham Chase, Southampton,
Hampshire SO32 2LR

A collection of 2, 3, 4 & 5 bedroom homes

All journey times and distances are approximate.


Linden
HOMES

Development layout



Not to scale. Trees and landscaping are indicative only and may alter during construction. The trees, shrubs and gardens shown are illustrative only. Finishes and materials may vary from those shown here. Please ask your Sales Executive for specific details.



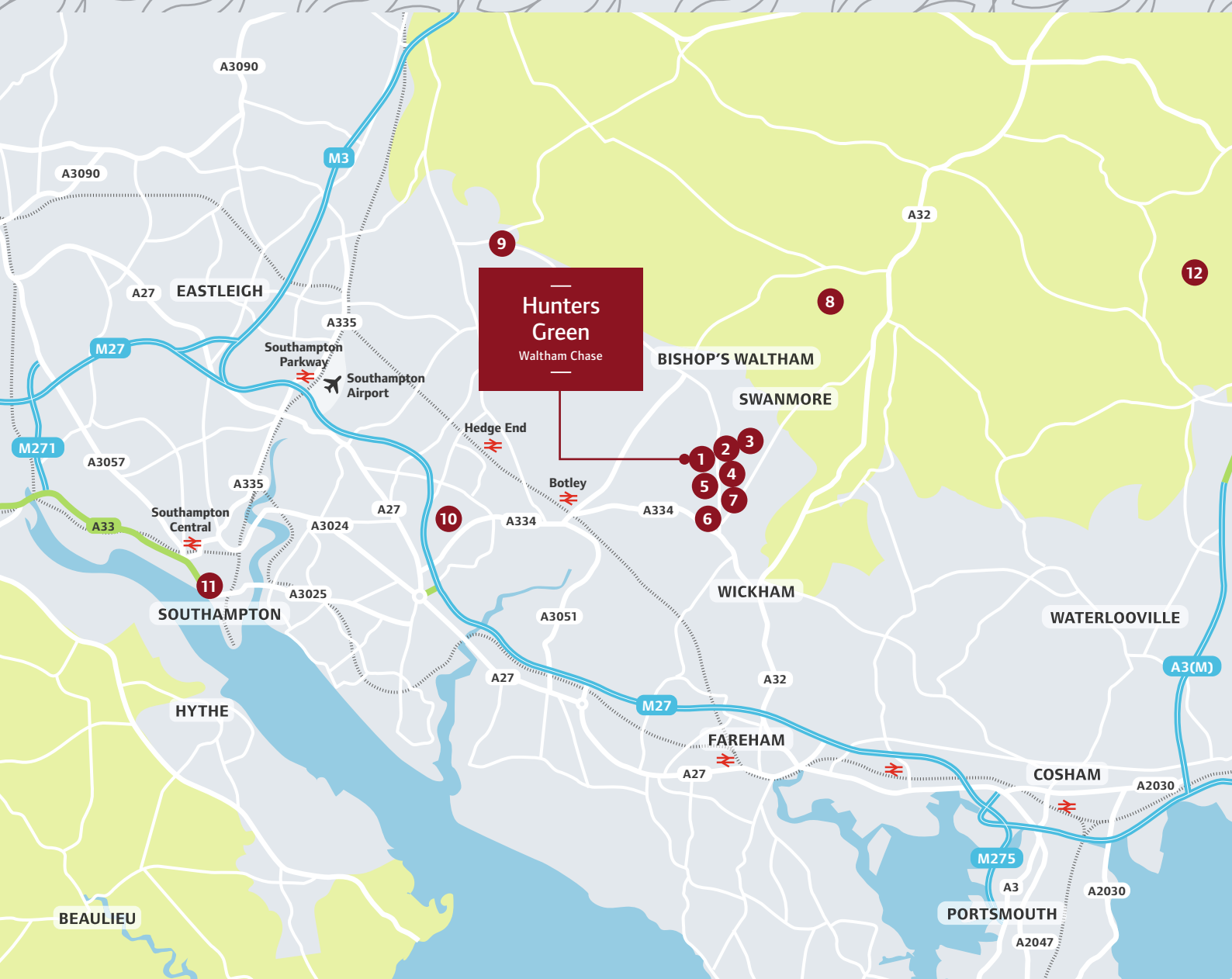
- The Kitchener
5 bedroom home
Homes 40, 46, 48, 55, 57 & 60
- The Fairford
4 bedroom home
Homes 5, 45, 47, 53, 59 & 63
- The Fulford
4 bedroom home
Homes 2, 30, 31 & 56
- The Oxford
4 bedroom home
Homes 49 & 54
- The Rutherford
4 bedroom home
Home 22
- The Beckham
3 bedroom home
Homes 3 & 4
- The Farnham
3 bedroom home
Home 58
- The Fincham
3 bedroom home
Homes 20, 21, 61 & 62
- The Fulham
3 bedroom home
Home 29
- The Redwood
3 bedroom home
Homes 1, 18, 19, 39 & 50
- The Waltman
3 bedroom home
Homes 41, 42, 43 & 44
- The Milton
2 bedroom home
Homes 16 & 17
- 3 bedroom home
- 3 bedroom home
- 3 bedroom home
- 3 bedroom home
- 2 bedroom home
- 1 & 2 bedroom home
- *Affordable housing

bc Bin Collection Area
 • Bollards/Railings
 ▶ Garage Entrance
 v Visitors Parking Space

Hunters Green

Waltham Chase

Around the neighbourhood



- | | | | |
|---|---|--|---|
| 1 WALTHAM CHASE PRE-SCHOOL | 4 WALTHAM CHASE POST OFFICE AND STORES | 7 ST JOHN THE BAPTIST CofE PRIMARY SCHOOL | 10 HEDGE END SUPERSTORES |
| 2 WALTHAM CHASE VILLAGE HALL | 5 THE BLACK DOG INN | 8 CORHAMPTON GOLF CLUB | 11 WEST QUAY SHOPPING CENTRE |
| 3 SWANMORE COLLEGE OF TECHNOLOGY | 6 THE OLD FORGE INN | 9 MARWELL WILDLIFE AND ACTIVITY CENTRE | 12 BUTSER HILL NATIONAL NATURE RESERVE |

For all sales enquiries please call
01489 222 731
lindenhomes.co.uk/huntersgreen

XLNS468/November 2017


Linden
HOMES

—
**Hunters
Green**

Waltham Chase

The Milton

2 bedroom home

Homes 16 & 17



Hunters Green

Sandy Lane, Waltham Chase, Southampton,
Hampshire SO32 2LR

A collection of 2, 3, 4 & 5 bedroom homes

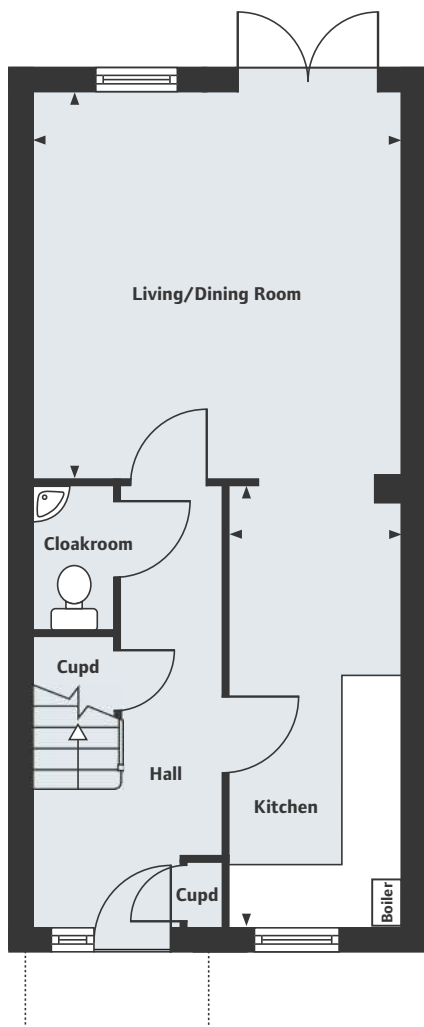

Linden
HOMES

Hunters Green

Waltham Chase

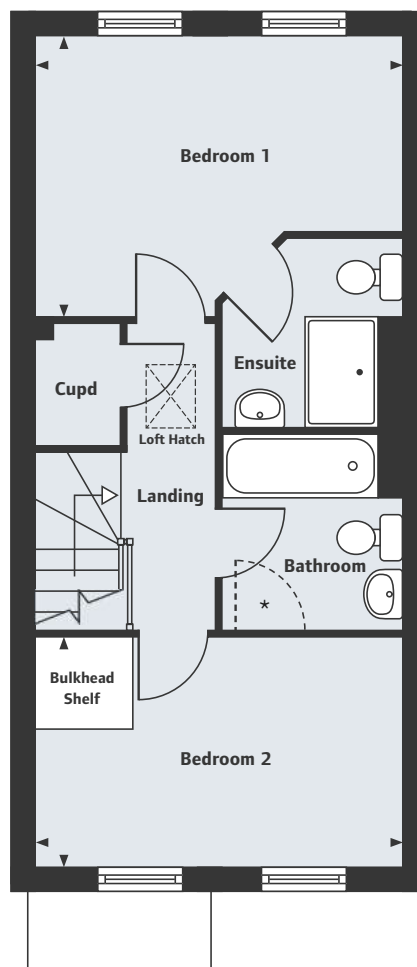
The Milton

2 bedroom home



GROUND FLOOR

Living/Dining Room	4.20m x 4.04m	13'9" x 13'3"
Kitchen	4.89m x 1.89m	16'1" x 6'2"



FIRST FLOOR

Bedroom 1	4.04m x 3.15m	13'3" x 10'4"
Bedroom 2	4.04m x 2.50m	13'3" x 8'2"

*Optional Jack and Jill door to bathroom.

For all sales enquiries please call
01489 222 731
lindenhomes.co.uk/huntersgreen

Please note, floor plans and dimensions are taken from architectural drawings and are for guidance only. Dimensions stated are within a tolerance of plus or minus 50mm. Overall dimensions are usually stated and there may be projections into these. With our continual improvement policy we constantly review our designs and specification to ensure we deliver the best product to our customers. Computer generated images not to scale. Finishes and materials may vary and landscaping is illustrative only. Kitchen layouts are indicative only and may change. To confirm specific details on our homes please ask your Sales Executive. XLNS468/November 2017.

Linden
 HOMES

—
**Hunters
Green**

Waltham Chase
—

The Waltman

3 bedroom home

Homes 41, 42, 43 & 44



Hunters Green

Sandy Lane, Waltham Chase, Southampton,
Hampshire SO32 2LR

A collection of 2, 3, 4 & 5 bedroom homes

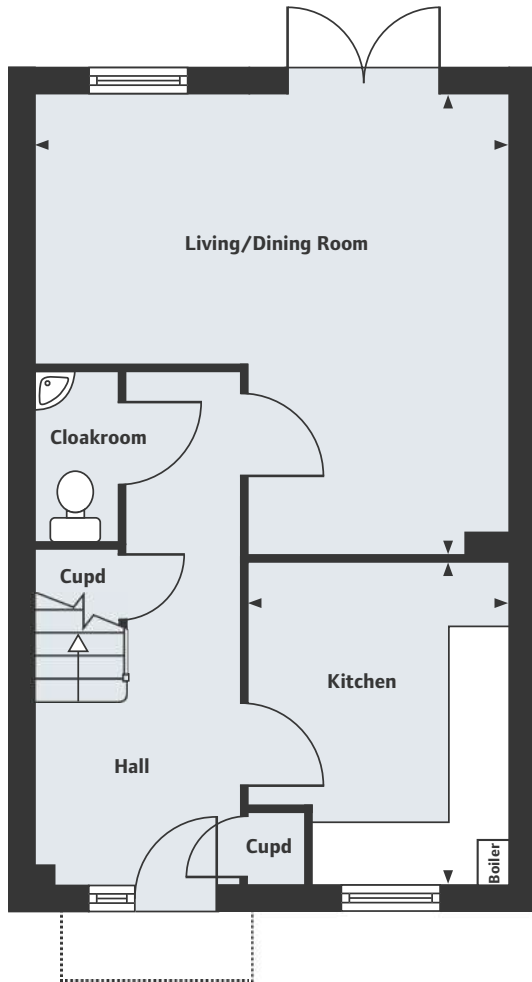

Linden
HOMES

Hunters Green

Waltham Chase

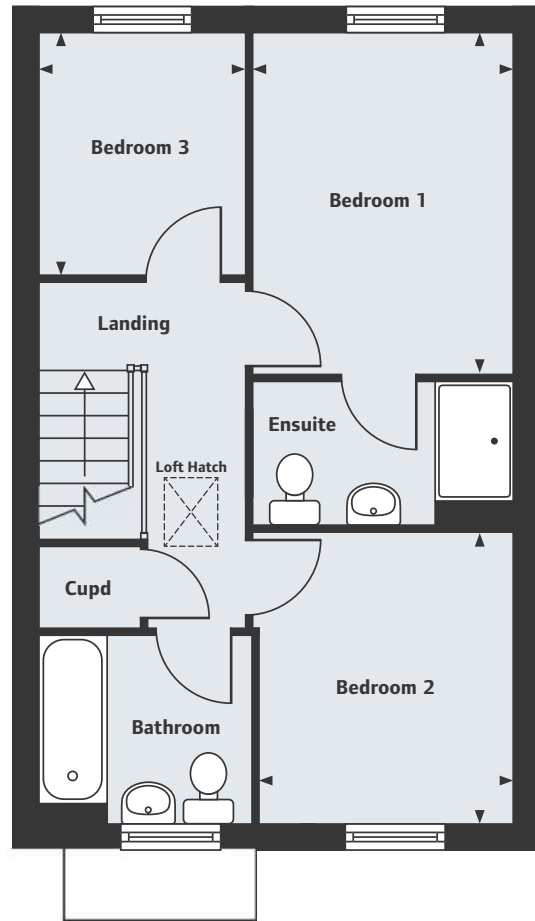
The Waltman

3 bedroom home



GROUND FLOOR

Living/Dining Room	4.83m x 4.72m	15'10" x 15'6"
Kitchen	3.25m x 2.66m	10'8" x 8'9"



FIRST FLOOR

Bedroom 1	3.46m x 2.66m	11'4" x 8'9"
Bedroom 2	2.98m x 2.58m	9'9" x 8'6"
Bedroom 3	2.40m x 2.07m	7'10" x 6'9"

For all sales enquiries please call
01489 222 731
lindenhomes.co.uk/huntersgreen

Please note, floor plans and dimensions are taken from architectural drawings and are for guidance only. Dimensions stated are within a tolerance of plus or minus 50mm. Overall dimensions are usually stated and there may be projections into these. With our continual improvement policy we constantly review our designs and specification to ensure we deliver the best product to our customers. Computer generated images not to scale. Finishes and materials may vary and landscaping is illustrative only. Kitchen layouts are indicative only and may change. To confirm specific details on our homes please ask your Sales Executive. XLNS468/November 2017.


Linden
 HOMES

—
**Hunters
Green**

Waltham Chase
—

The Fulham

3 bedroom home

Home 29



Hunters Green

Sandy Lane, Waltham Chase, Southampton,
Hampshire SO32 2LR

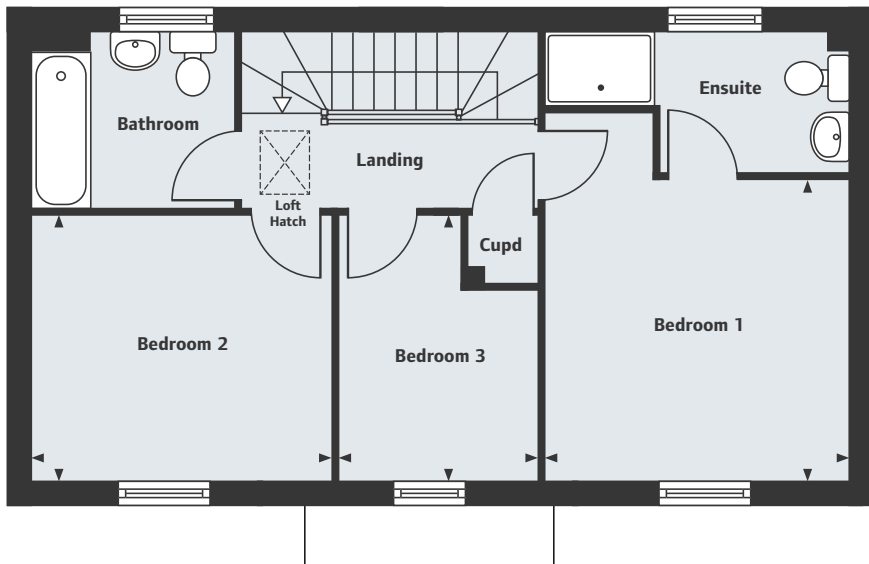
A collection of 2, 3, 4 & 5 bedroom homes


Linden
HOMES

Hunters
Green

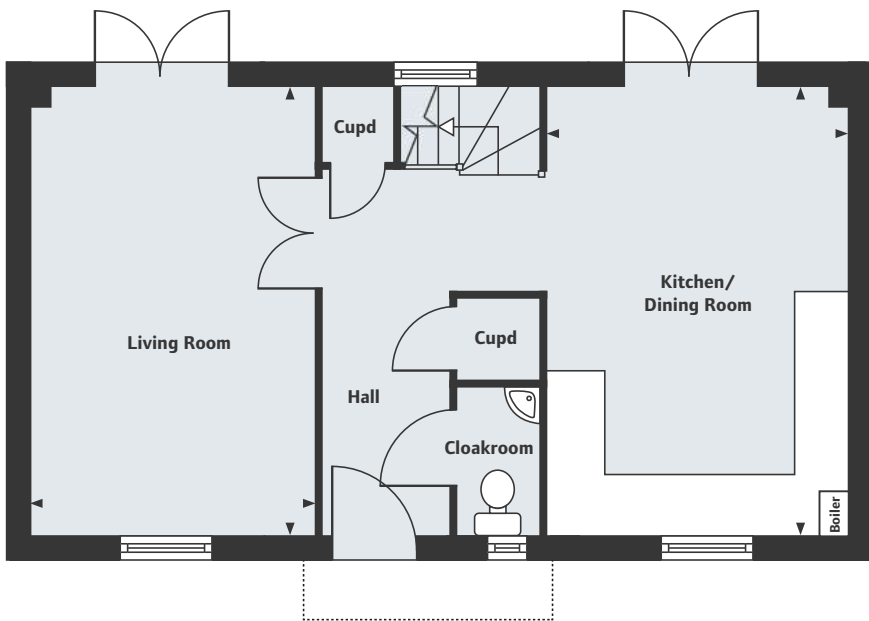
Waltham Chase

The Fulham
3 bedroom home



FIRST FLOOR

Bedroom 1	3.31m x 3.29m	10'10" x 10'9"
Bedroom 2	3.34m x 2.89m	10'11" x 9'6"
Bedroom 3	2.89m x 2.18m	9'6" x 7'2"



GROUND FLOOR

Living Room	4.92m x 3.13m	16'2" x 10'3"
Kitchen/Dining Room	4.92m x 3.31m	16'2" x 10'10"

For all sales enquiries please call
01489 222 731
lindenhomes.co.uk/huntersgreen

Please note, floor plans and dimensions are taken from architectural drawings and are for guidance only. Dimensions stated are within a tolerance of plus or minus 50mm. Overall dimensions are usually stated and there may be projections into these. With our continual improvement policy we constantly review our designs and specification to ensure we deliver the best product to our customers. Computer generated images not to scale. Finishes and materials may vary and landscaping is illustrative only. Kitchen layouts are indicative only and may change. To confirm specific details on our homes please ask your Sales Executive. XLNS468/November 2017.


Linden
HOMES

—
**Hunters
Green**

Waltham Chase
—

The Beckham

3 bedroom home

Homes 3 & 4



Hunters Green

Sandy Lane, Waltham Chase, Southampton,
Hampshire SO32 2LR

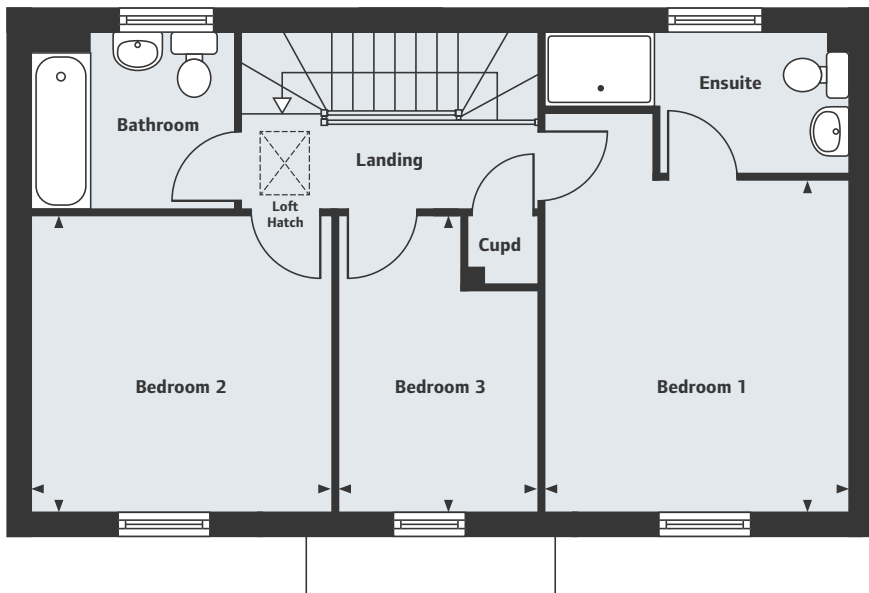
A collection of 2, 3, 4 & 5 bedroom homes


Linden
HOMES

Hunters
Green

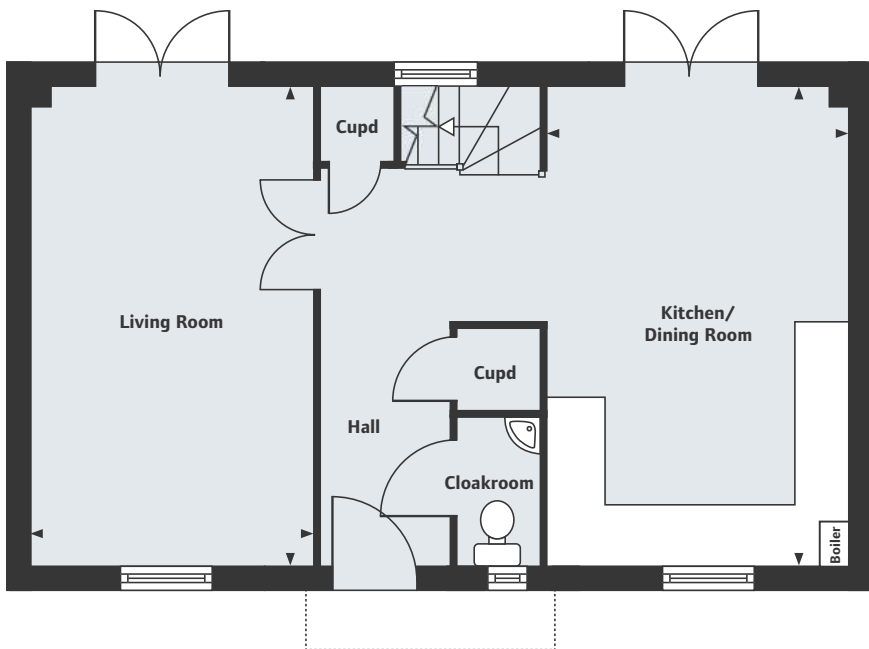
Waltham Chase

The Beckham
3 bedroom home



FIRST FLOOR

Bedroom 1	3.63m x 3.31m	11'11" x 10'10"
Bedroom 2	3.34m x 3.23m	10'11" x 10'7"
Bedroom 3	3.23m x 2.18m	10'7" x 7'2"



GROUND FLOOR

Living Room	5.25m x 3.14m	17'3" x 10'4"
Kitchen/Dining Room	5.25m x 3.30m	17'3" x 10'10"

For all sales enquiries please call
01489 222 731
lindenhomes.co.uk/huntersgreen

Please note, floor plans and dimensions are taken from architectural drawings and are for guidance only. Dimensions stated are within a tolerance of plus or minus 50mm. Overall dimensions are usually stated and there may be projections into these. With our continual improvement policy we constantly review our designs and specification to ensure we deliver the best product to our customers. Computer generated images not to scale. Finishes and materials may vary and landscaping is illustrative only. Kitchen layouts are indicative only and may change. To confirm specific details on our homes please ask your Sales Executive. XLNS468/November 2017.


Linden
HOMES

—
**Hunters
Green**

Waltham Chase
—

The Fincham

3 bedroom home

Homes 20, 21, 61 & 62



Hunters Green

Sandy Lane, Waltham Chase, Southampton,
Hampshire SO32 2LR

A collection of 2, 3, 4 & 5 bedroom homes

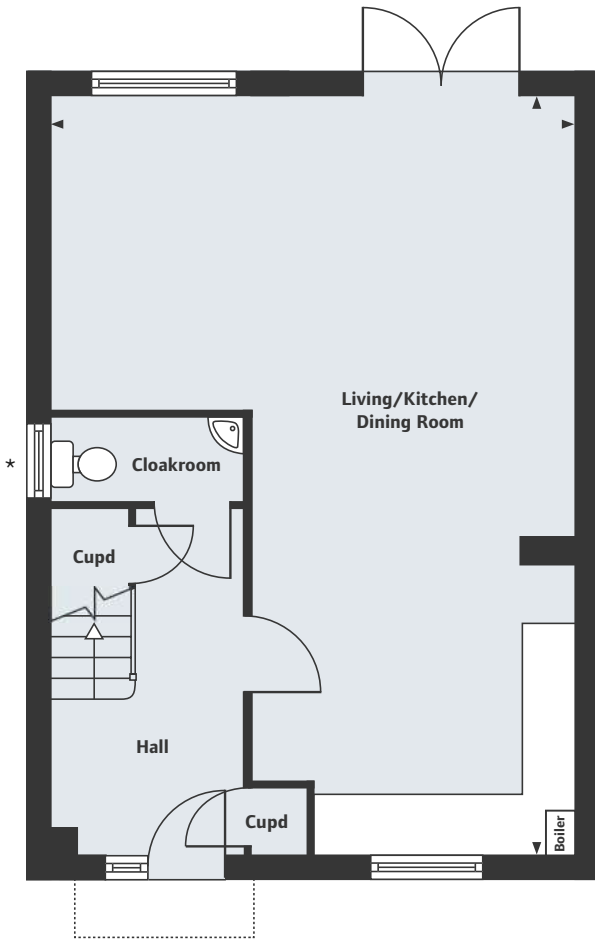

Linden
HOMES

Hunters Green

Waltham Chase

The Fincham

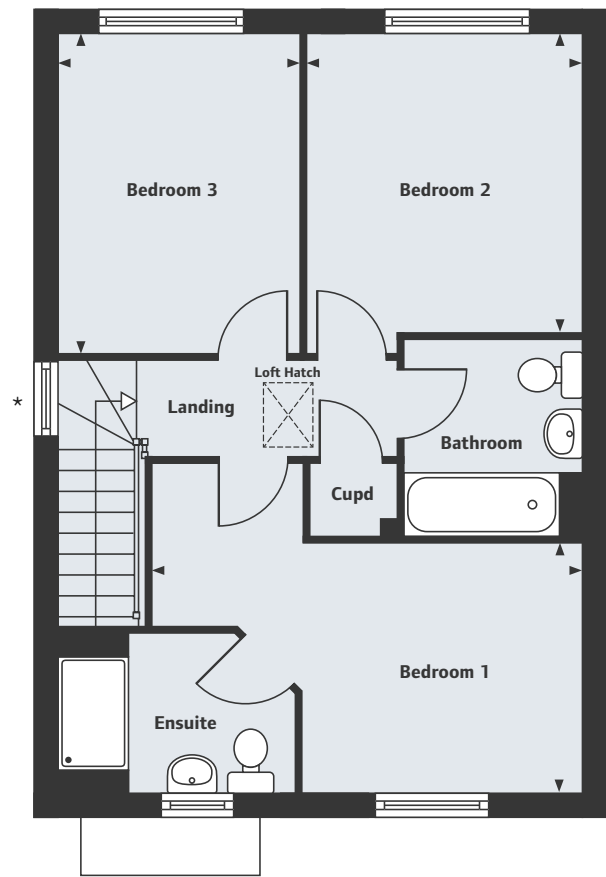
3 bedroom home



GROUND FLOOR

Living/Kitchen/Dining Room

8.29m x 5.77m 27'2" x 18'11"



FIRST FLOOR

Bedroom 1	4.70m x 2.71m	15'5" x 8'11"
Bedroom 2	3.24m x 3.01m	10'8" x 9'11"
Bedroom 3	3.47m x 2.67m	11'5" x 8'9"

*Gable windows to Homes 61 & 62 only.

For all sales enquiries please call
01489 222 731
lindenhomes.co.uk/huntersgreen

Please note, floor plans and dimensions are taken from architectural drawings and are for guidance only. Dimensions stated are within a tolerance of plus or minus 50mm. Overall dimensions are usually stated and there may be projections into these. With our continual improvement policy we constantly review our designs and specification to ensure we deliver the best product to our customers. Computer generated images not to scale. Finishes and materials may vary and landscaping is illustrative only. Kitchen layouts are indicative only and may change. To confirm specific details on our homes please ask your Sales Executive. XLNS468/November 2017.


Linden
 HOMES

Hunters
Green

Waltham Chase

The Farnham

3 bedroom home

Home 58



Hunters Green

Sandy Lane, Waltham Chase, Southampton,
Hampshire SO32 2LR

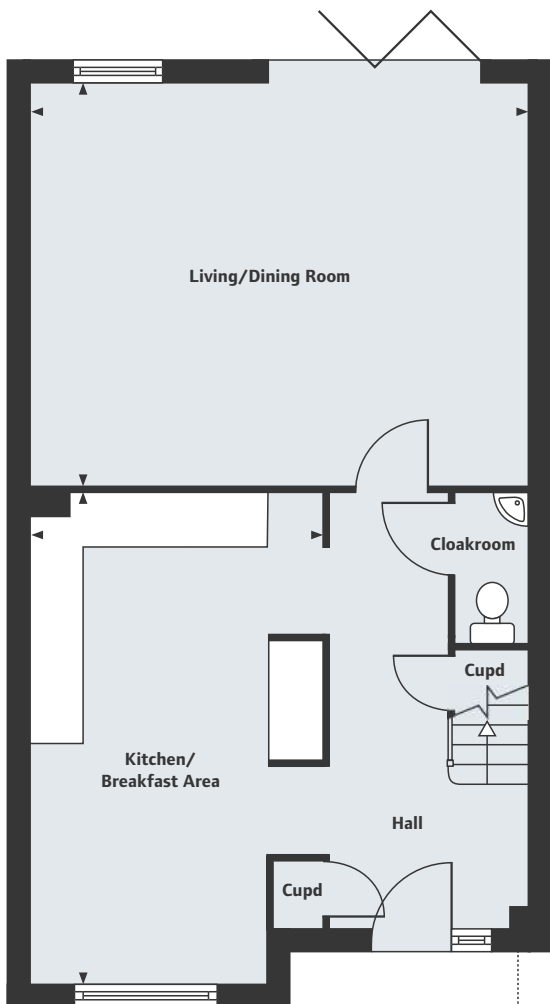
A collection of 2, 3, 4 & 5 bedroom homes


Linden
HOMES

Hunters
Green

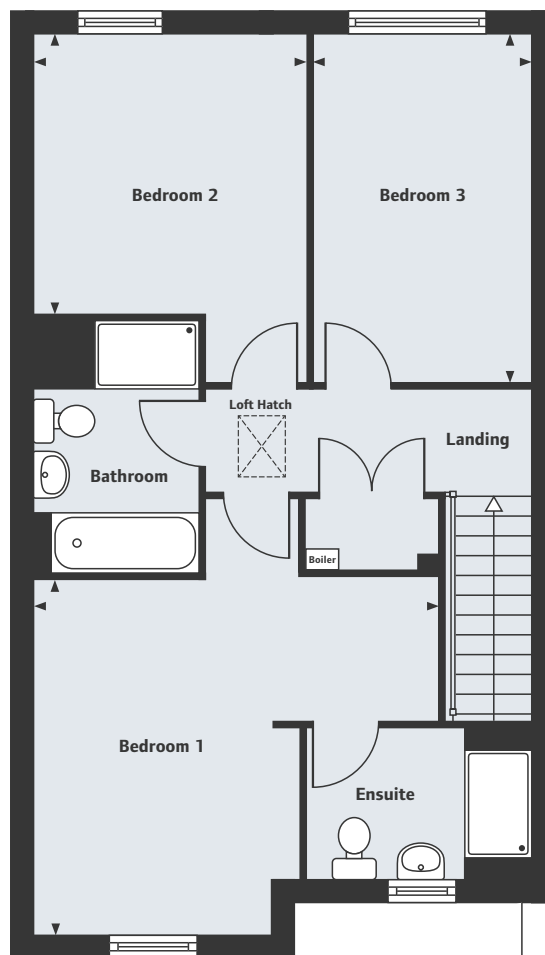
Waltham Chase

The Farnham
3 bedroom home



GROUND FLOOR

Living/Dining Room	5.82m x 4.63m	19'1" x 15'2"
Kitchen/Breakfast Area	5.65m x 3.41m	18'6" x 11'2"



FIRST FLOOR

Bedroom 1	4.63m x 4.06m	15'2" x 13'4"
Bedroom 2	3.25m x 3.18m	10'8" x 10'5"
Bedroom 3	4.03m x 2.54m	13'3" x 8'4"

For all sales enquiries please call
01489 222 731
lindenhomes.co.uk/huntersgreen

Please note, floor plans and dimensions are taken from architectural drawings and are for guidance only. Dimensions stated are within a tolerance of plus or minus 50mm. Overall dimensions are usually stated and there may be projections into these. With our continual improvement policy we constantly review our designs and specification to ensure we deliver the best product to our customers. Computer generated images not to scale. Finishes and materials may vary and landscaping is illustrative only. Kitchen layouts are indicative only and may change. To confirm specific details on our homes please ask your Sales Executive. XLNS468/November 2017.


Linden
HOMES

Hunters
Green

Waltham Chase

The Redwood

3 bedroom home

Homes 1, 18, 19, 39 & 50



Hunters Green

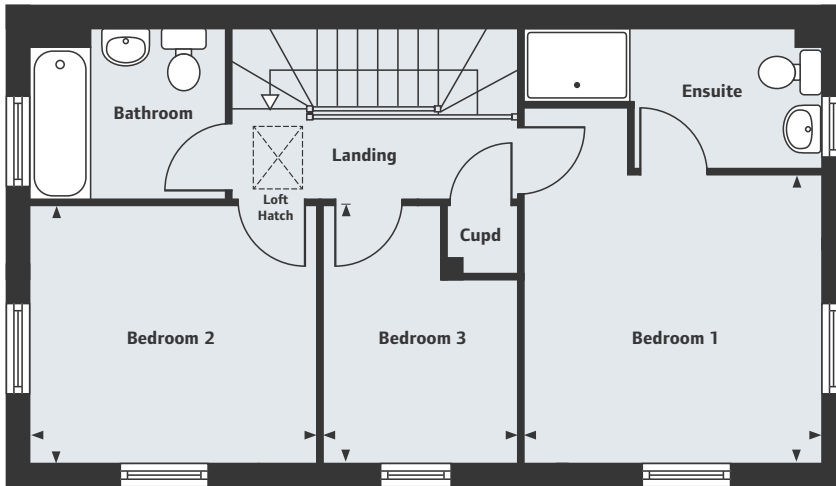
Sandy Lane, Waltham Chase, Southampton,
Hampshire SO32 2LR

A collection of 2, 3, 4 & 5 bedroom homes


Linden
HOMES

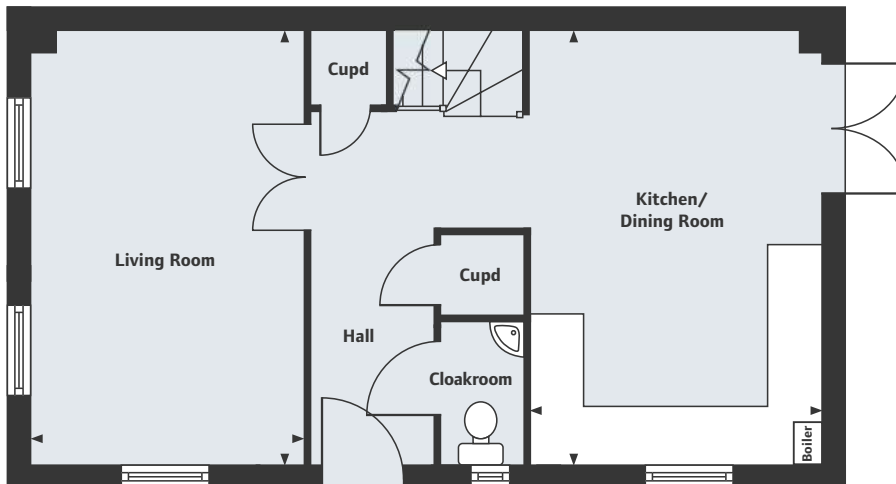
The Redwood

3 bedroom home



FIRST FLOOR

Bedroom 1	3.31m x 3.29m	10'10" x 10'9"
Bedroom 2	3.27m x 2.89m	10'9" x 9'6"
Bedroom 3	2.89m x 2.18m	9'6" x 7'2"



GROUND FLOOR

Living Room	4.92m x 3.07m	16'2" x 10'1"
Kitchen/Dining Room	4.92m x 3.30m	16'2" x 10'10"

For all sales enquiries please call
01489 222 731
lindenhomes.co.uk/huntersgreen

Please note, floor plans and dimensions are taken from architectural drawings and are for guidance only. Dimensions stated are within a tolerance of plus or minus 50mm. Overall dimensions are usually stated and there may be projections into these. With our continual improvement policy we constantly review our designs and specification to ensure we deliver the best product to our customers. Computer generated images not to scale. Finishes and materials may vary and landscaping is illustrative only. Kitchen layouts are indicative only and may change. To confirm specific details on our homes please ask your Sales Executive. XLNS468/November 2017.

Hunters
Green

Waltham Chase

The Oxford

4 bedroom home

Homes 49 & 54



Hunters Green

Sandy Lane, Waltham Chase, Southampton,
Hampshire SO32 2LR

A collection of 2, 3, 4 & 5 bedroom homes

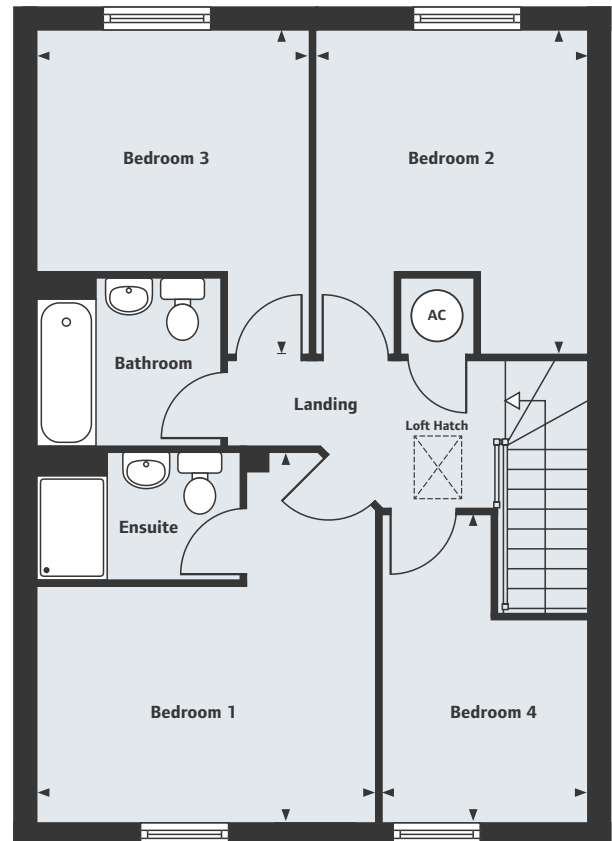
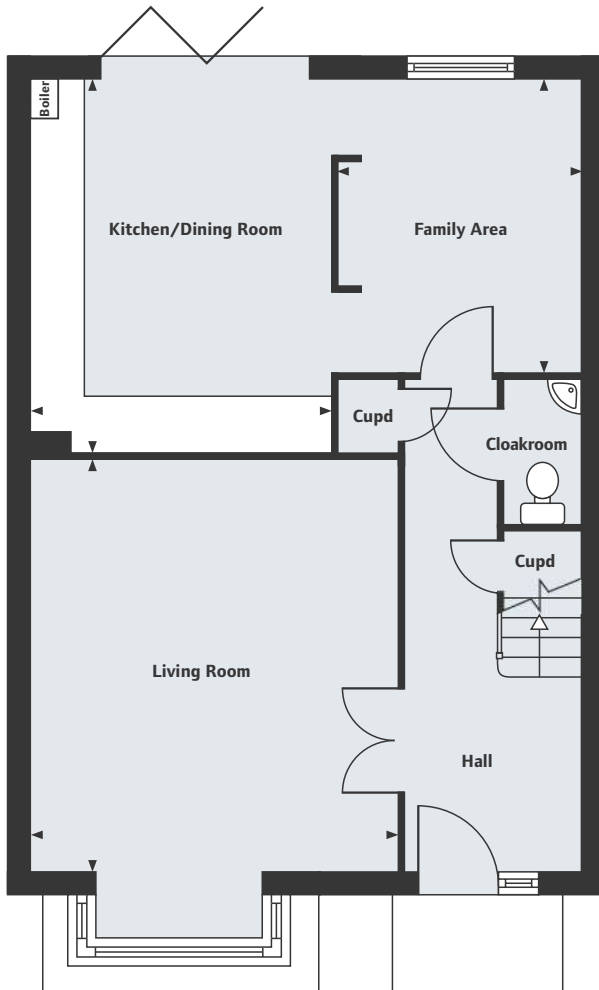

Linden
HOMES

Hunters Green

Waltham Chase

The Oxford

4 bedroom home



GROUND FLOOR

Living Room	4.72m x 4.16m	15'6" x 13'8"
Kitchen/Dining Room	4.32m x 3.47m	14'2" x 11'5"
Family Area	3.37m x 2.82m	11'1" x 9'3"

FIRST FLOOR

Bedroom 1	4.27m x 3.92m	14'0" x 12'10"
Bedroom 2	3.75m x 3.13m	12'4" x 10'3"
Bedroom 3	3.75m x 3.15m	12'4" x 10'4"
Bedroom 4	3.56m x 2.36m	11'8" x 7'9"

For all sales enquiries please call
01489 222 731
lindenhomes.co.uk/huntersgreen

Please note, floor plans and dimensions are taken from architectural drawings and are for guidance only. Dimensions stated are within a tolerance of plus or minus 50mm. Overall dimensions are usually stated and there may be projections into these. With our continual improvement policy we constantly review our designs and specification to ensure we deliver the best product to our customers. Computer generated images not to scale. Finishes and materials may vary and landscaping is illustrative only. Kitchen layouts are indicative only and may change. To confirm specific details on our homes please ask your Sales Executive. XLNS468/November 2017.


Linden
 HOMES

—
**Hunters
Green**

Waltham Chase
—

The Fulford

4 bedroom home

Homes 2, 30, 31 & 56



Hunters Green

Sandy Lane, Waltham Chase, Southampton,
Hampshire SO32 2LR

A collection of 2, 3, 4 & 5 bedroom homes

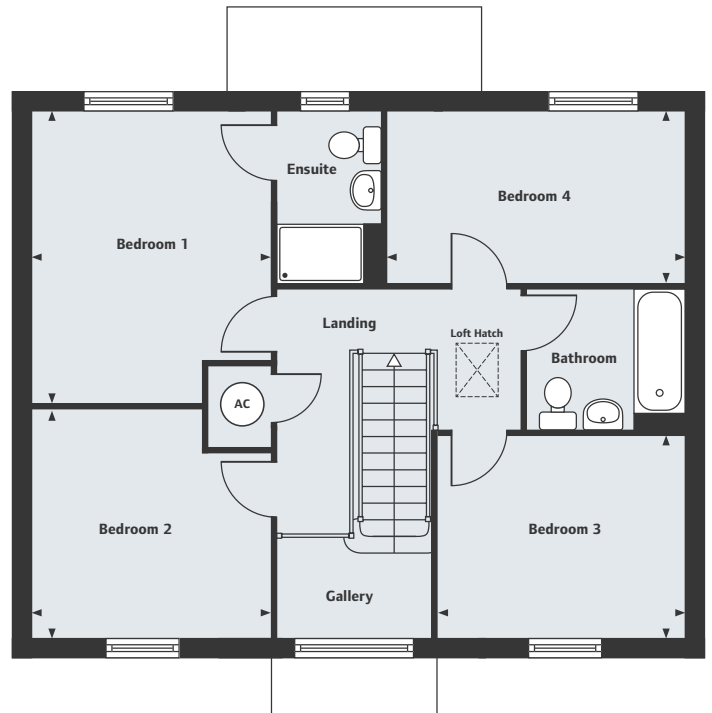
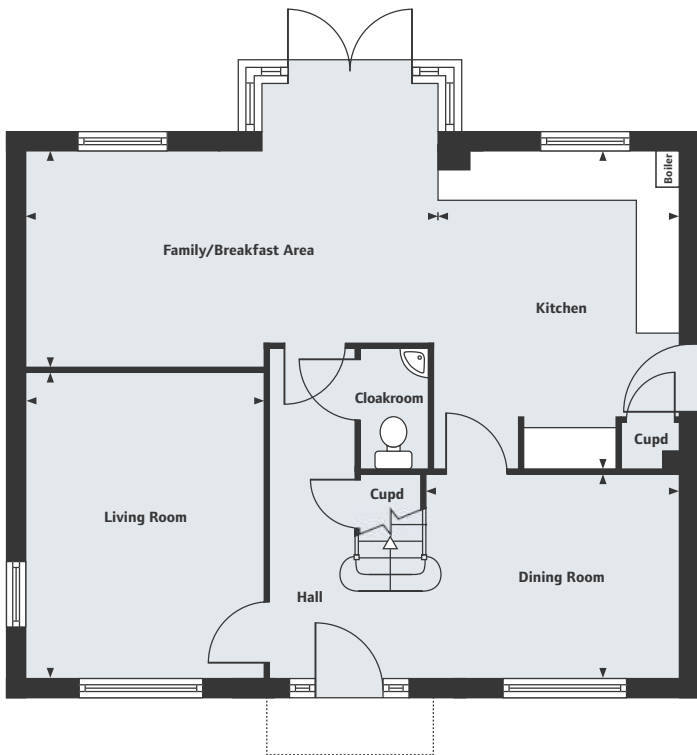

Linden
HOMES

Hunters Green

Waltham Chase

The Fulford

4 bedroom home



GROUND FLOOR

Living Room	4.10m x 3.22m	13'5" x 10'7"
Kitchen	4.34m x 3.38m	14'3" x 11'1"
Family/Breakfast Area	5.59m x 2.92m	18'4" x 9'7"
Dining Room	3.47m x 2.73m	11'5" x 8'11"

FIRST FLOOR

Bedroom 1	3.97m x 3.27m	13'0" x 10'9"
Bedroom 2	3.27m x 3.10m	10'9" x 10'2"
Bedroom 3	3.39m x 2.74m	11'1" x 9'0"
Bedroom 4	4.07m x 2.31m	13'4" x 7'7"

*No window to Home 2. †No door to Home 2.

For all sales enquiries please call
01489 222 731
lindenhomes.co.uk/huntersgreen

Please note, floor plans and dimensions are taken from architectural drawings and are for guidance only. Dimensions stated are within a tolerance of plus or minus 50mm. Overall dimensions are usually stated and there may be projections into these. With our continual improvement policy we constantly review our designs and specification to ensure we deliver the best product to our customers. Computer generated images not to scale. Finishes and materials may vary and landscaping is illustrative only. Kitchen layouts are indicative only and may change. To confirm specific details on our homes please ask your Sales Executive. XLNS468/November 2017.

Linden
 HOMES

—
**Hunters
Green**

Waltham Chase
—

The Rutherford

4 bedroom home

Home 22



Hunters Green

Sandy Lane, Waltham Chase, Southampton,
Hampshire SO32 2LR

A collection of 2, 3, 4 & 5 bedroom homes

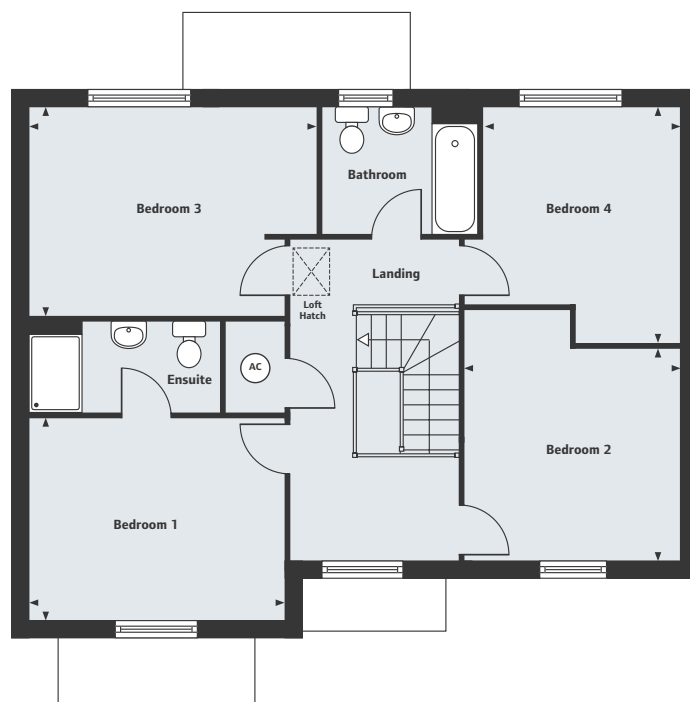
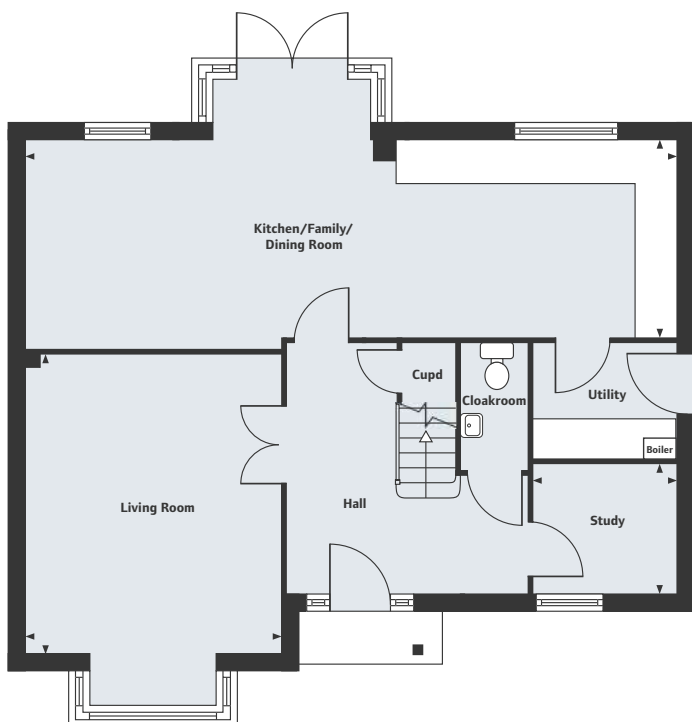

Linden
HOMES

Hunters Green

Waltham Chase

The Rutherford

4 bedroom home



GROUND FLOOR

Living Room	4.53m x 3.90m	14'10" x 12'9"
Kitchen/Family/Dining Room	9.98m x 2.99m	32'9" x 9'10"
Study	2.19m x 1.96m	7'2" x 6'5"

FIRST FLOOR

Bedroom 1	3.90m x 3.05m	12'10" x 10'0"
Bedroom 2	3.29m x 3.23m	10'9" x 10'7"
Bedroom 3	4.40m x 3.16m	14'5" x 10'4"
Bedroom 4	3.61m x 3.00m	11'10" x 9'10"

For all sales enquiries please call
01489 222 731
lindenhomes.co.uk/huntersgreen

Please note, floor plans and dimensions are taken from architectural drawings and are for guidance only. Dimensions stated are within a tolerance of plus or minus 50mm. Overall dimensions are usually stated and there may be projections into these. With our continual improvement policy we constantly review our designs and specification to ensure we deliver the best product to our customers. Computer generated images not to scale. Finishes and materials may vary and landscaping is illustrative only. Kitchen layouts are indicative only and may change. To confirm specific details on our homes please ask your Sales Executive. XLNS468/November 2017.

Linden
 HOMES

—
**Hunters
Green**

Waltham Chase
—

The Fairford

4 bedroom home

Homes 5, 45, 47, 53, 59 & 63



Hunters Green

Sandy Lane, Waltham Chase, Southampton,
Hampshire SO32 2LR

A collection of 2, 3, 4 & 5 bedroom homes

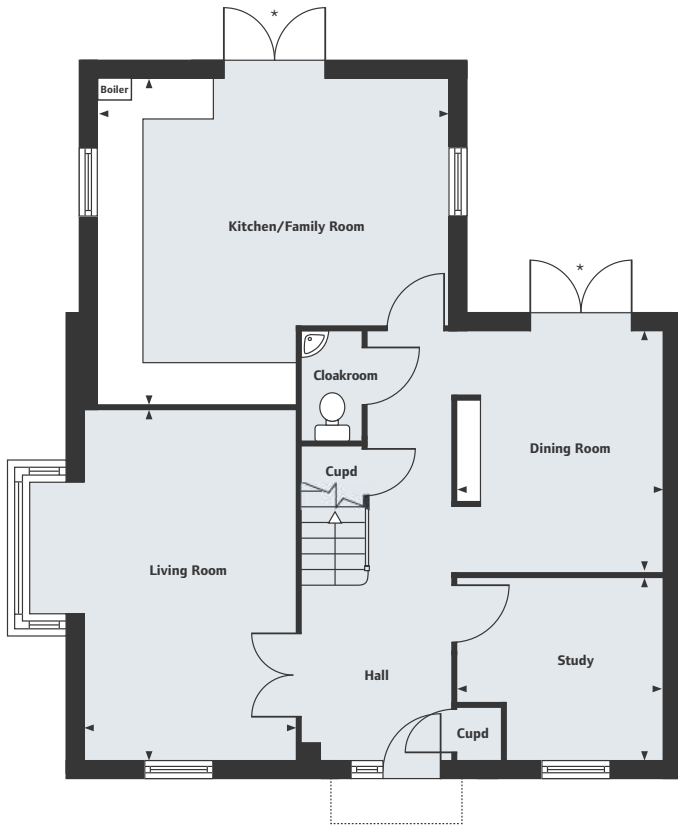

Linden
HOMES

Hunters Green

Waltham Chase

The Fairford

4 bedroom home



GROUND FLOOR

Living Room	5.12m x 3.08m	16'9" x 10'1"
Kitchen/Family Room	5.14m x 4.76m	16'10" x 15'7"
Dining Room	3.52m x 3.06m	11'6" x 10'0"
Study	3.06m x 2.65m	10'0" x 8'8"



FIRST FLOOR

Bedroom 1/Dressing Area	5.14m x 3.34m	16'10" x 10'11"
Bedroom 2	3.90m x 3.13m	12'9" x 10'3"
Bedroom 3	3.66m x 3.04m	12'0" x 10'0"
Bedroom 4	3.04m x 2.51m	10'0" x 8'3"

*Positions of the ground floor double doors to the garden, and some first floor windows, vary on Home 5. Please ask your Sales Executive for details.

For all sales enquiries please call
01489 222 731
lindenhomes.co.uk/huntersgreen

Please note, floor plans and dimensions are taken from architectural drawings and are for guidance only. Dimensions stated are within a tolerance of plus or minus 50mm. Overall dimensions are usually stated and there may be projections into these. With our continual improvement policy we constantly review our designs and specification to ensure we deliver the best product to our customers. Computer generated images not to scale. Finishes and materials may vary and landscaping is illustrative only. Kitchen layouts are indicative only and may change. To confirm specific details on our homes please ask your Sales Executive. XLNS468/November 2017.


Linden
 HOMES

—
**Hunters
Green**

Waltham Chase
—

The Kitchener

5 bedroom home

Homes 40, 46, 48, 55, 57 & 60



Hunters Green

Sandy Lane, Waltham Chase, Southampton,
Hampshire SO32 2LR

A collection of 2, 3, 4 & 5 bedroom homes

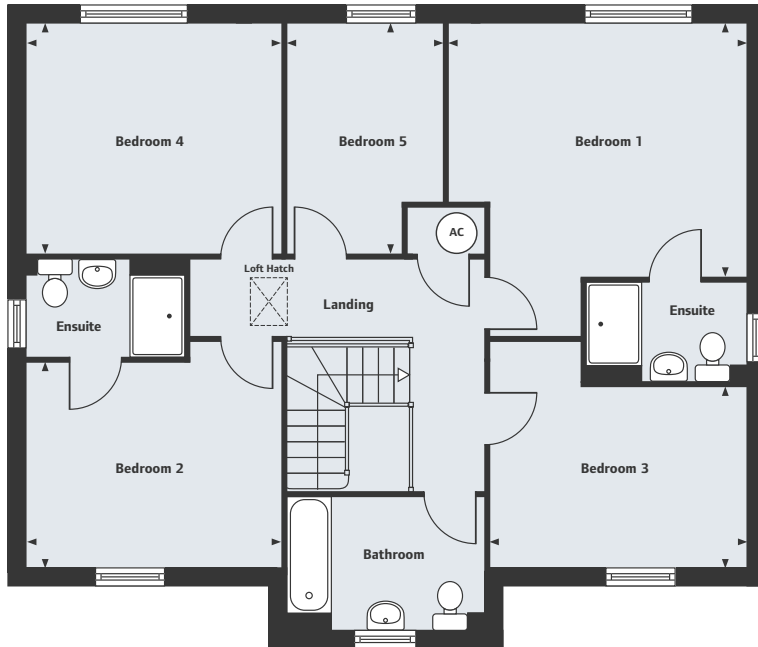

Linden
HOMES

Hunters Green

Waltham Chase

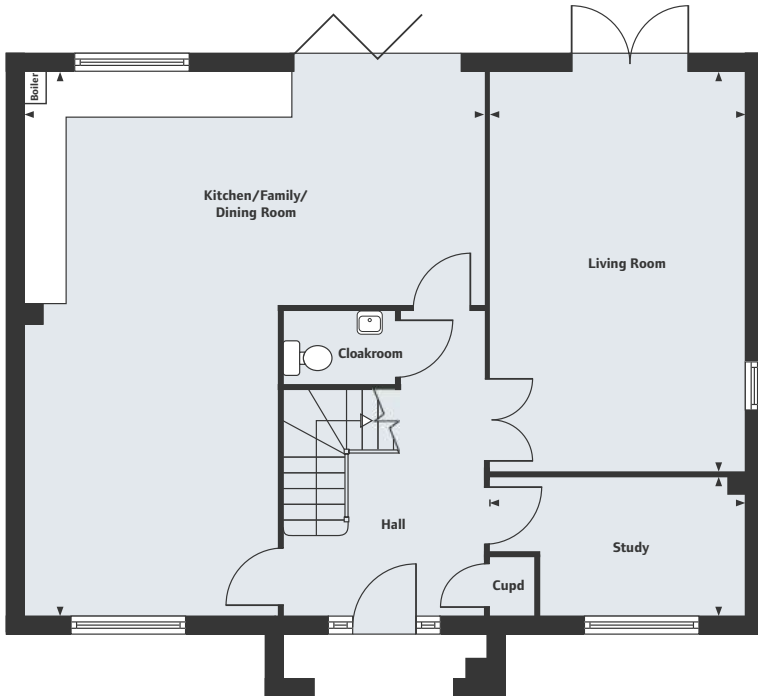
The Kitchener

5 bedroom home



FIRST FLOOR

Bedroom 1	4.33m x 3.69m	14'2" x 12'1"
Bedroom 2	3.73m x 3.00m	12'3" x 9'10"
Bedroom 3	3.72m x 2.64m	12'2" x 8'8"
Bedroom 4	3.73m x 3.34m	12'3" x 10'11"
Bedroom 5	3.34m x 2.28m	10'11" x 7'6"



GROUND FLOOR

Living Room	5.83m x 3.68m	19'2" x 12'1"
Kitchen/Family/Dining Room	7.95m x 6.72m	26'1" x 22'1"
Study	3.73m x 1.98m	12'3" x 6'6"

For all sales enquiries please call
01489 222 731
lindenhomes.co.uk/huntersgreen

Please note, floor plans and dimensions are taken from architectural drawings and are for guidance only. Dimensions stated are within a tolerance of plus or minus 50mm. Overall dimensions are usually stated and there may be projections into these. With our continual improvement policy we constantly review our designs and specification to ensure we deliver the best product to our customers. Computer generated images not to scale. Finishes and materials may vary and landscaping is illustrative only. Kitchen layouts are indicative only and may change. To confirm specific details on our homes please ask your Sales Executive. XLNS468/November 2017.


Linden
 HOMES

Hunters Green

Waltham Chase

Specification



Kitchen

	2 & 3 bedroom homes	4 bedroom homes	5 bedroom homes
Fitted Symphony kitchen with laminate worktop and upstand	•	•	•
Stainless steel single undercounter oven	•		
Stainless steel double eye level oven		•	•
Stainless steel gas hob	•	•	•
Integrated extractor hood	•		
Stainless steel chimney extractor hood		•	•
Integrated fridge freezer		•	•
Removable unit for future dishwasher, with plumbing and electrical supply	•	•	•
Space for washer/dryer with plumbing and electrical supply	•	•	•
Stainless steel splashback	•	•	•
1½ bowl stainless steel sink with mixer tap	•	•	•
Ceiling light fitting with track spotlights	•	•	•
LED pelmet lighting		•	•

Bathroom, ensuite and cloakroom

Contemporary white sanitaryware and chrome fittings	•	•	•
Half height tiling above bath	•	•	•
Full height tiling above bath shower and in shower enclosure	•	•	•
Splashback tiling above basin	•	•	•

Electrical

TV and BT telephone points in living room, family room and bedroom 1		•	•
TV and BT telephone points to living room and bedroom 1	•		
Pendant light fittings (except kitchen, cloakroom, bathroom and ensuite) including low energy fittings	•	•	•
White plastic switchplates and sockets	•	•	•

Other

Walls in almond white matt emulsion	•	•	•
Ceilings in brilliant white matt emulsion	•	•	•
Internal woodwork in gloss white	•	•	•
White panel internal doors with chrome ironmongery	•	•	•
Softwood staircase with white/light oak handrails	•	•	•
Gas fired system boiler with cylinder		•	•
Gas combi boiler	•		
External door with multipoint locking system and door bell	•	•	•
Low energy external light to front door	•	•	•

Peace of mind

Each home will be independently surveyed during construction by the NHBC, who will issue their 10 year warranty certificate on completion of the home.

Hunters Green

Sandy Lane, Waltham Chase, Southampton, Hampshire SO32 2LR
A collection of 2, 3, 4 & 5 bedroom homes

01489 222 731

Please refer to the Sales Executive for details.
Specification may be amended at any time without notice.
Photography is for illustrative purposes only and may include upgrades and extras available at additional cost.
XLNS468/November 2017.


Linden
HOMES