

—  
**Beaumont Park**  
Ringwood  
—

A delightful collection of new 2, 3 & 4 bedroom homes on the edge of the New Forest



The bustling market town of Ringwood is a proudly independent community, relishing its close connections with the glorious New Forest while enjoying fast road access to Bournemouth, Southampton and excellent rail links to London and the West Country.

In addition to its weekly market, Ringwood has Waitrose and Sainsbury's supermarkets, a thriving High Street with local shops and amenities, popular and successful schools for all ages, and a famous local real ale brewery.

The historic New Forest is right on your doorstep at Beaumont Park. The open heaths, ancient beech woodlands and conifer plantations are much loved for walking, cycling and horseriding, and with its pretty villages and traditional pubs, the famous 'wild' ponies and herds of timid deer, it takes a lifetime to explore, and an afternoon to fall in love with.

Ringwood itself is extremely well connected. By road, Bournemouth (12 miles)

and Christchurch (9 miles) which have shopping, beaches and nightlife galore, Southampton (20 miles) has even larger shopping, entertainments and sport, plus an international airport (22 miles). Historic Salisbury is just 18 miles to the north. By train, stations at Bournemouth, Christchurch and Brockenhurst (11.3 miles) offer fast, direct services to London (Brockenhurst – London Waterloo 1hr 34mins).

Distances and journey times approximate. Sources: AA Route Planner, National Rail Enquiries.

**Beaumont Park**  
Crow Lane, Ringwood, Hampshire BH24 3DZ  
A collection of 2, 3 & 4 bedroom homes  
**01425 383 266**



A JOINT VENTURE DEVELOPMENT

# Beaumont Park

Ringwood

## Development layout

- The Clifford  
4 bedroom home  
Home 28
- The Fairford  
4 bedroom home  
Homes 2, 12, 13 & 35
- The Fulford  
4 bedroom home  
Homes 3, 21 & 60
- The Oxford  
4 bedroom home  
Home 16
- The Rutherford  
4 bedroom home  
Homes 11 & 27
- The Beckham  
3 bedroom home  
Home 18
- The Fincham  
3 bedroom home  
Homes 7, 19, 34, 55, 56 & 61
- The Langham  
3 bedroom home  
Homes 1, 8, 17, 20, 33 & 62
- The Willingham  
3 bedroom home  
Homes 9, 10, 14 & 15
- The Milton  
2 bedroom home  
Homes 4, 5 & 6

- 3 bedroom home  
Homes 24, 29, 36 & 54
- 3 bedroom home  
Homes 45, 46, 47,  
57, 58 & 59
- 2 bedroom home  
Homes 22 & 37
- 2 bedroom home  
Homes 23, 25, 26, 30,  
31, 32, 38, 39, 40, 41,  
42, 43 & 44
- 1 bedroom home  
Homes 48-53

- \* Affordable homes
- ▷ Garage Entrance
- ▷ Drive Through/Car Port Entrance
- Bollards
- Car Port



*Not to scale. Trees and landscaping are indicative only and may alter during construction. The trees, shrubs and gardens shown are illustrative only. Finishes and materials may vary from those shown here. Please ask your Sales Executive for specific details. XLINS476/August 2017.*

Existing Residential Housing



Existing Residential Housing





—  
**Beaumont Park**

Ringwood  
—

**The Milton**

2 bedroom home

Homes 4, 5 & 6



**Beaumont Park**

Crow Lane, Ringwood, Hampshire BH24 3DZ

A collection of 2, 3 & 4 bedroom homes

**01425 383 266**

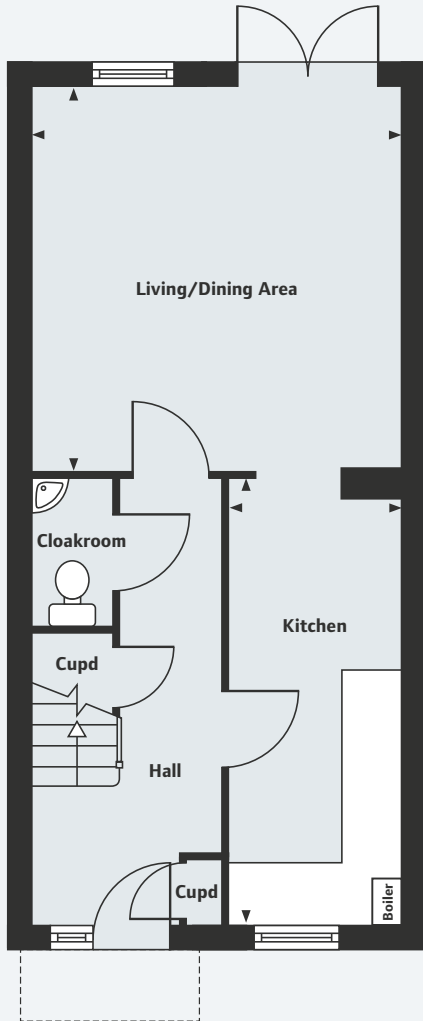
**Wates**  
DEVELOPMENTS

**Linden**  
HOMES

A JOINT VENTURE DEVELOPMENT

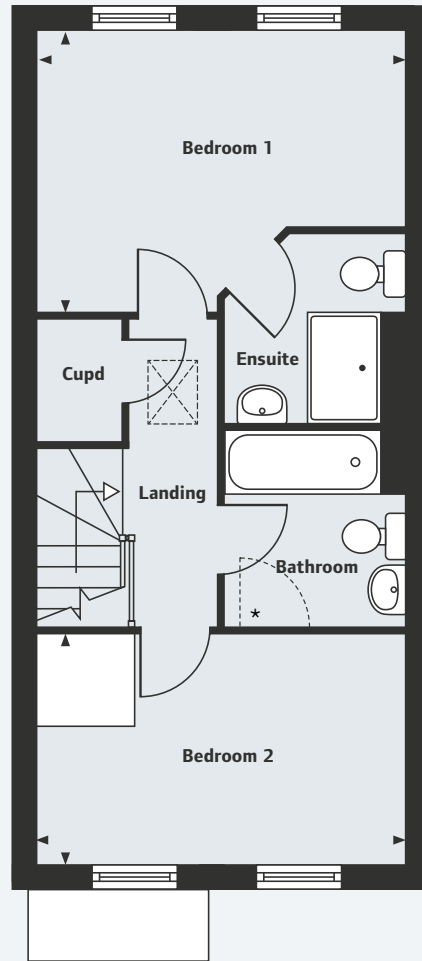
Beaumont Park  
Ringwood

The Milton  
2 bedroom home



Ground Floor

Living/Dining Area	4.21m x 4.04m	13'10" x 13'3"
Kitchen	4.86m x 1.88m	15'11" x 6'2"



First Floor

Bedroom 1	4.04m x 3.15m	13'3" x 10'4"
Bedroom 2	4.04m x 2.50m	13'3" x 8'2"

\*Optional Jack & Jill door. Please consult your Sales Executive for more details.

Please note, floor plans and dimensions are taken from architectural drawings and are for guidance only. Dimensions stated are within a tolerance of plus or minus 50mm. Overall dimensions are usually stated and there may be projections into these. With our continual improvement policy we constantly review our designs and specification to ensure we deliver the best product to our customers. Computer generated images not to scale. Finishes and materials may vary and landscaping is illustrative only. Kitchen layouts are indicative only and may change. To confirm specific details on our homes please ask your Sales Executive. XLNS467/September 2017.

For all sales enquiries please call  
**01425 383 266**  
[lindenhomes.co.uk/beaumontpark](http://lindenhomes.co.uk/beaumontpark)



A JOINT VENTURE DEVELOPMENT



—  
**Beaumont Park**

Ringwood  
—

**The Langham**

3 bedroom home

Homes 1, 8, 17, 20, 33 & 62



**Beaumont Park**

Crow Lane, Ringwood, Hampshire BH24 3DZ

A collection of 2, 3 & 4 bedroom homes

**01425 383 266**

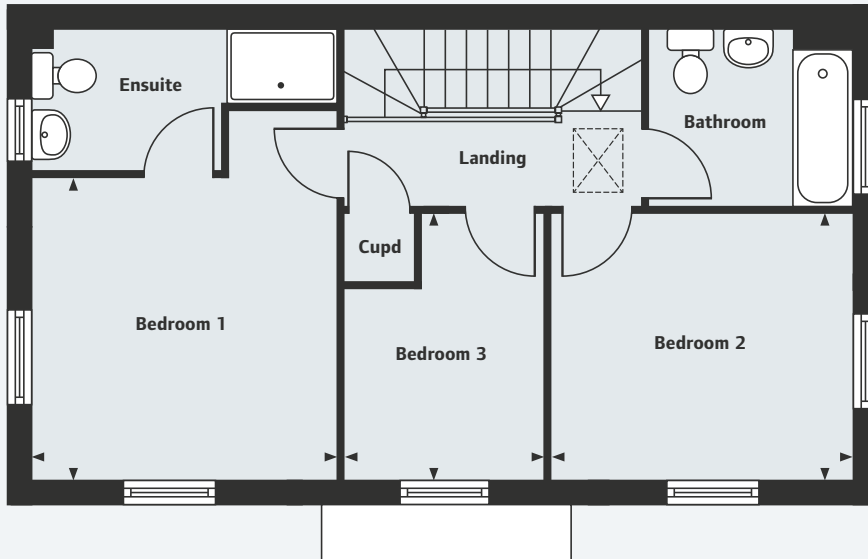
**Wates**  
DEVELOPMENTS

**Linden**  
HOMES

A JOINT VENTURE DEVELOPMENT

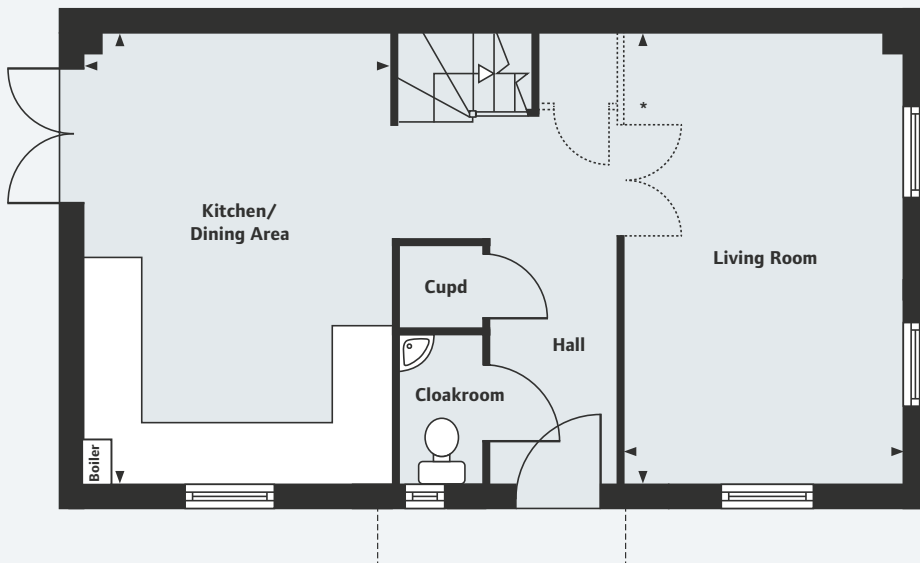
Beaumont Park  
Ringwood

The Langham  
3 bedroom home



First Floor

Bedroom 1	3.31m x 3.28m	10'10" x 10'9"
Bedroom 2	3.27m x 2.89m	10'9" x 9'6"
Bedroom 3	2.89m x 2.18m	9'6" x 7'2"



Ground Floor

Living Room	4.92m x 3.07m	16'2" x 10'1"
Kitchen/Dining Area	4.92m x 3.30m	16'2" x 10'10"

\*Walls and doors optional. Please consult your Sales Executive for more details.

Please note, floor plans and dimensions are taken from architectural drawings and are for guidance only. Dimensions stated are within a tolerance of plus or minus 50mm. Overall dimensions are usually stated and there may be projections into these. With our continual improvement policy we constantly review our designs and specification to ensure we deliver the best product to our customers. Computer generated images not to scale and shows homes 1, 17, 33 & 62. Finishes and materials may vary and landscaping is illustrative only. Kitchen layouts are indicative only and may change. To confirm specific details on our homes please ask your Sales Executive. XLN5467/September 2017.

For all sales enquiries please call  
**01425 383 266**  
[lindenhomes.co.uk/beaumontpark](http://lindenhomes.co.uk/beaumontpark)

**Wates**  
DEVELOPMENTS

**Linden**  
HOMES

A JOINT VENTURE DEVELOPMENT



—  
**Beaumont Park**

Ringwood  
—

**The Beckham**

3 bedroom home

Home 18



**Beaumont Park**

Crow Lane, Ringwood, Hampshire BH24 3DZ

A collection of 2, 3 & 4 bedroom homes

**01425 383 266**

**Wates**  
DEVELOPMENTS

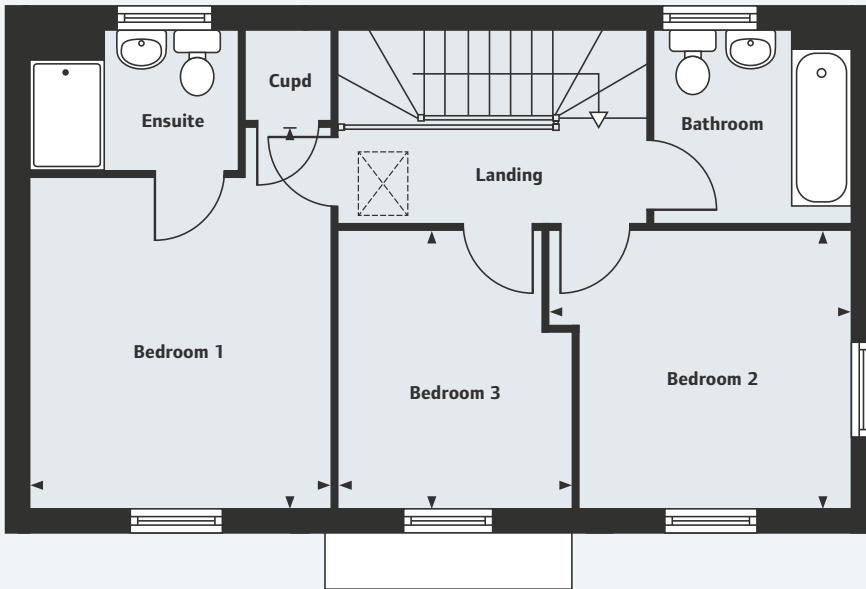
**Linden**  
HOMES

A JOINT VENTURE DEVELOPMENT



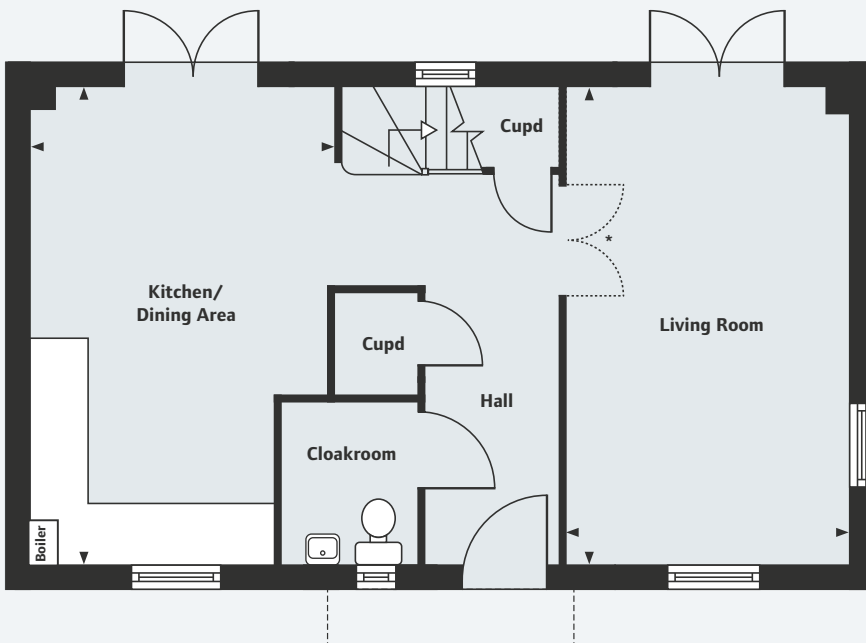
Beaumont Park  
Ringwood

The Beckham  
3 bedroom home



First Floor

Bedroom 1	4.20m x 3.28m	13'9" x 10'9"
Bedroom 2	3.27m x 3.04m	10'9" x 10'0"
Bedroom 3	3.08m x 2.58m	10'1" x 8'5"



Ground Floor

Living Room	5.25m x 3.08m	17'3" x 10'1"
Kitchen/Dining Area	5.25m x 3.23m	17'3" x 10'7"

\*Doors optional. Please consult your Sales Executive for more details.

Please note, floor plans and dimensions are taken from architectural drawings and are for guidance only. Dimensions stated are within a tolerance of plus or minus 50mm. Overall dimensions are usually stated and there may be projections into these. With our continual improvement policy we constantly review our designs and specification to ensure we deliver the best product to our customers. Computer generated images not to scale. Finishes and materials may vary and landscaping is illustrative only. Kitchen layouts are indicative only and may change. To confirm specific details on our homes please ask your Sales Executive. XLNS467/September 2017.

For all sales enquiries please call  
**01425 383 266**  
[lindenhomes.co.uk/beaumontpark](http://lindenhomes.co.uk/beaumontpark)



—  
**Beaumont Park**

Ringwood  
—

## The Willingham

3 bedroom home

Homes 9, 10, 14 & 15



### **Beaumont Park**

Crow Lane, Ringwood, Hampshire BH24 3DZ

A collection of 2, 3 & 4 bedroom homes

**01425 383 266**

**Wates**  
DEVELOPMENTS

**Linden**  
HOMES

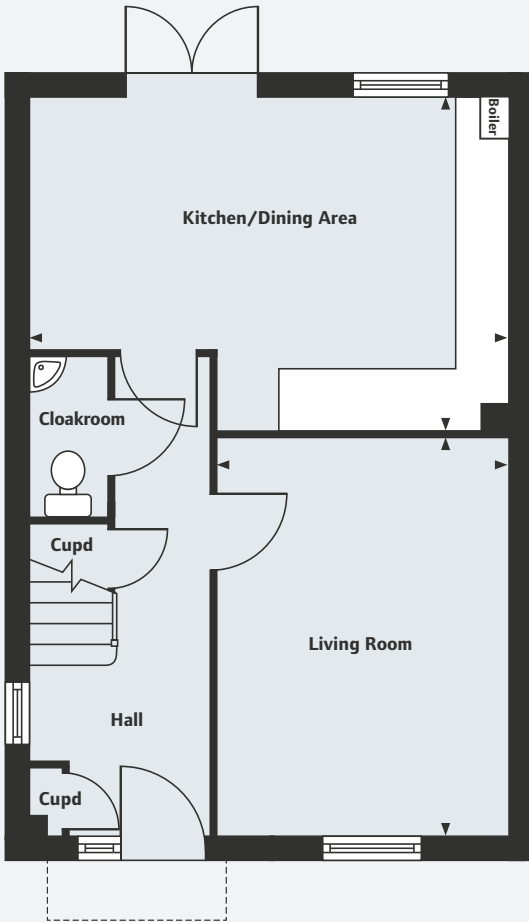
A JOINT VENTURE DEVELOPMENT



Beaumont Park  
Ringwood

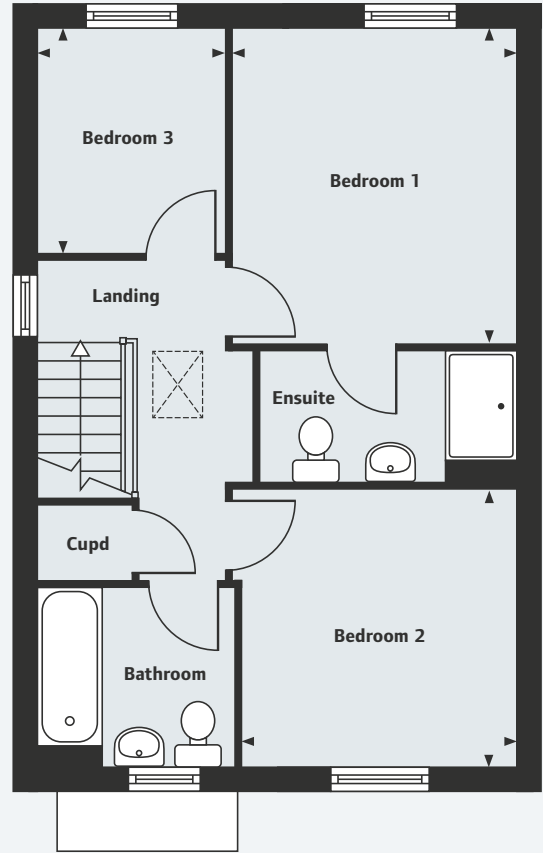
# The Willingham

3 bedroom home



## Ground Floor

Living Room	4.32m x 3.14m	14'2" x 10'3"
Kitchen/Dining Area	5.28m x 3.59m	17'4" x 11'9"



## First Floor

Bedroom 1	3.45m x 3.13m	11'4" x 10'3"
Bedroom 2	3.03m x 3.00m	9'11" x 9'10"
Bedroom 3	2.45m x 2.05m	8'0" x 6'9"

Please note, floor plans and dimensions are taken from architectural drawings and are for guidance only. Dimensions stated are within a tolerance of plus or minus 50mm. Overall dimensions are usually stated and there may be projections into these. With our continual improvement policy we constantly review our designs and specification to ensure we deliver the best product to our customers. Computer generated images not to scale. Finishes and materials may vary and landscaping is illustrative only. Kitchen layouts are indicative only and may change. To confirm specific details on our homes please ask your Sales Executive. XLNS467/September 2017.

For all sales enquiries please call  
**01425 383 266**  
[lindenhomes.co.uk/beaumontpark](http://lindenhomes.co.uk/beaumontpark)

**Wates**  
DEVELOPMENTS

**Linden**  
HOMES

A JOINT VENTURE DEVELOPMENT

—  
**Beaumont Park**

Ringwood  
—

**The Fincham**

3 bedroom home

Homes 7, 19, 34, 55, 56 & 61



**Beaumont Park**

Crow Lane, Ringwood, Hampshire BH24 3DZ

A collection of 2, 3 & 4 bedroom homes

**01425 383 266**

**Wates**  
DEVELOPMENTS

**Linden**  
HOMES

A JOINT VENTURE DEVELOPMENT

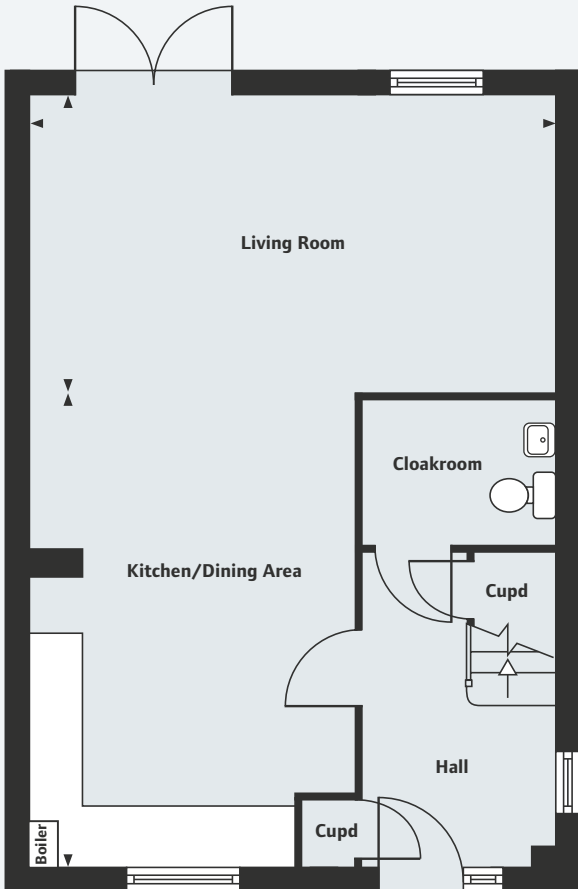


# Beaumont Park

Ringwood

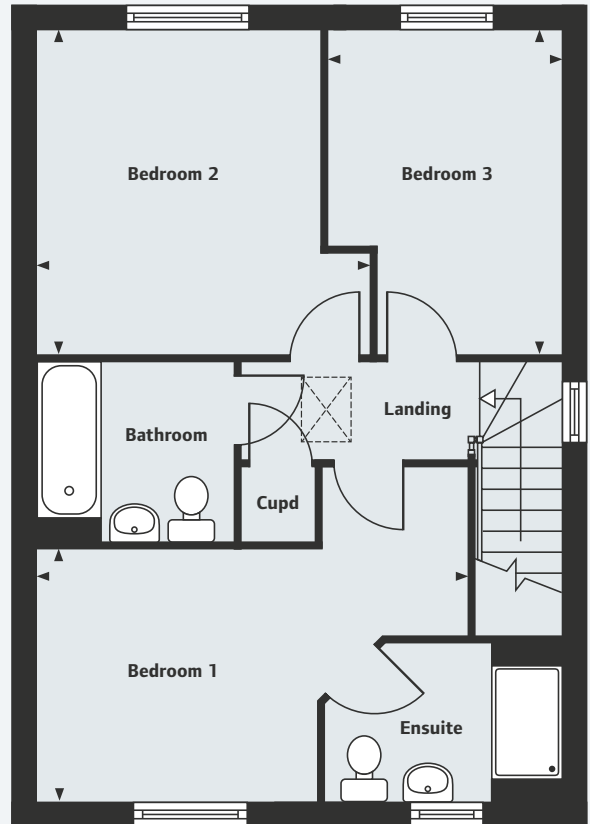
## The Fincham

3 bedroom home



### Ground Floor

Living Room	18'11" x 10'6"
Kitchen/Dining Area	17'1" x 11'8"



### First Floor

Bedroom 1	15'6" x 9'0"
Bedroom 2	11'11" x 11'7"
Bedroom 3	11'6" x 8'5"

Please note, floor plans and dimensions are taken from architectural drawings and are for guidance only. Dimensions stated are within a tolerance of plus or minus 50mm. Overall dimensions are usually stated and there may be projections into these. With our continual improvement policy we constantly review our designs and specification to ensure we deliver the best product to our customers. Computer generated images not to scale and shows homes 34, 56 & 61. Finishes and materials may vary and landscaping is illustrative only. Kitchen layouts are indicative only and may change. To confirm specific details on our homes please ask your Sales Executive. XLNS467/September 2017.

For all sales enquiries please call  
**01425 383 266**  
[lindenhomes.co.uk/beaumontpark](http://lindenhomes.co.uk/beaumontpark)

**Wates**  
DEVELOPMENTS

**Linden**  
HOMES

A JOINT VENTURE DEVELOPMENT

—  
**Beaumont Park**

Ringwood  
—

## The Oxford

4 bedroom home

Home 16



### **Beaumont Park**

Crow Lane, Ringwood, Hampshire BH24 3DZ

A collection of 2, 3 & 4 bedroom homes

**01425 383 266**

**Wates**  
DEVELOPMENTS

**Linden**  
HOMES

A JOINT VENTURE DEVELOPMENT

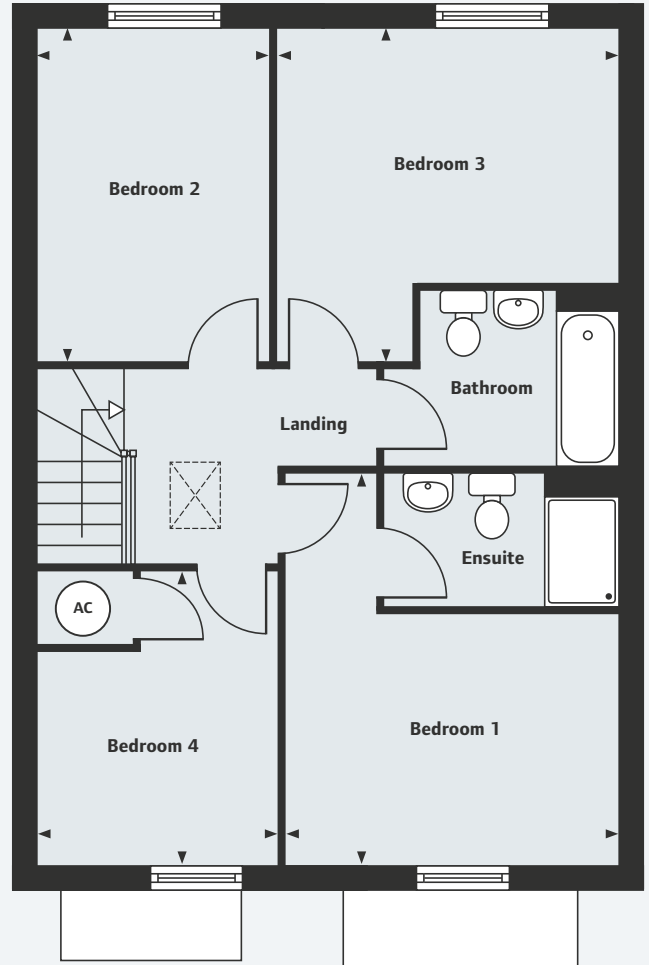
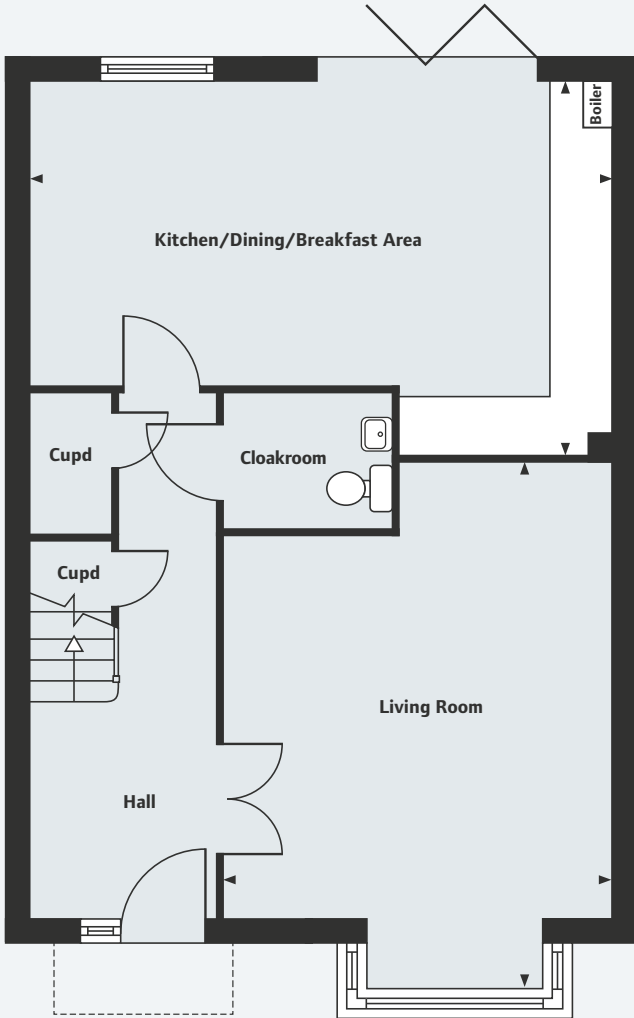


# Beaumont Park

Ringwood

# The Oxford

4 bedroom home



### Ground Floor

Living Room	5.80m x 4.23m	19'0" x 13'10"
Kitchen/Dining/Breakfast Area	6.38m x 4.05m	20'11" x 13'3"

### First Floor

Bedroom 1	4.30m x 3.63m	14'1" x 11'11"
Bedroom 2	3.63m x 2.56m	11'11" x 8'5"
Bedroom 3	3.73m x 3.64m	12'3" x 11'11"
Bedroom 4	3.22m x 2.65m	10'7" x 8'8"

Please note, floor plans and dimensions are taken from architectural drawings and are for guidance only. Dimensions stated are within a tolerance of plus or minus 50mm. Overall dimensions are usually stated and there may be projections into these. With our continual improvement policy we constantly review our designs and specification to ensure we deliver the best product to our customers. Computer generated images not to scale. Finishes and materials may vary and landscaping is illustrative only. Kitchen layouts are indicative only and may change. To confirm specific details on our homes please ask your Sales Executive. XLNS467/September 2017.

For all sales enquiries please call  
**01425 383 266**  
[lindenhomes.co.uk/beaumontpark](http://lindenhomes.co.uk/beaumontpark)



A JOINT VENTURE DEVELOPMENT

—  
**Beaumont Park**

Ringwood  
—

## The Fulford

4 bedroom home

Homes 3, 21 & 60



### **Beaumont Park**

Crow Lane, Ringwood, Hampshire BH24 3DZ

A collection of 2, 3 & 4 bedroom homes

**01425 383 266**

**Wates**  
DEVELOPMENTS

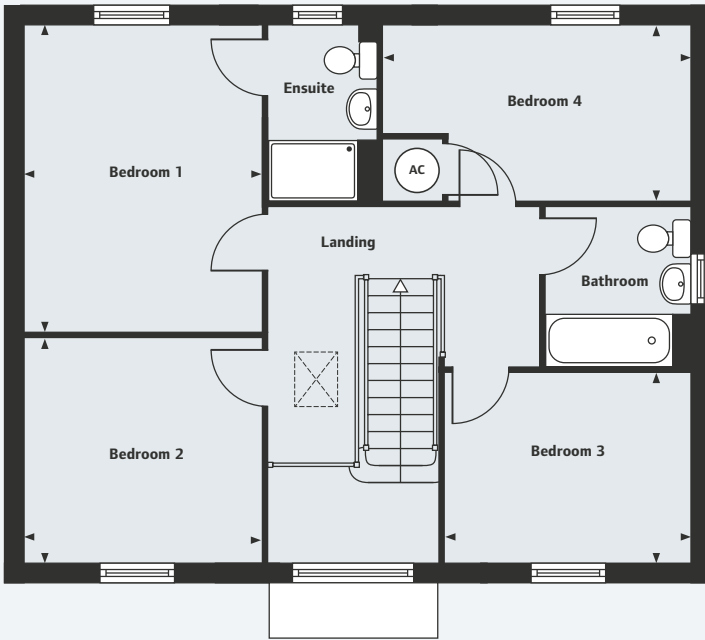
**Linden**  
HOMES

A JOINT VENTURE DEVELOPMENT



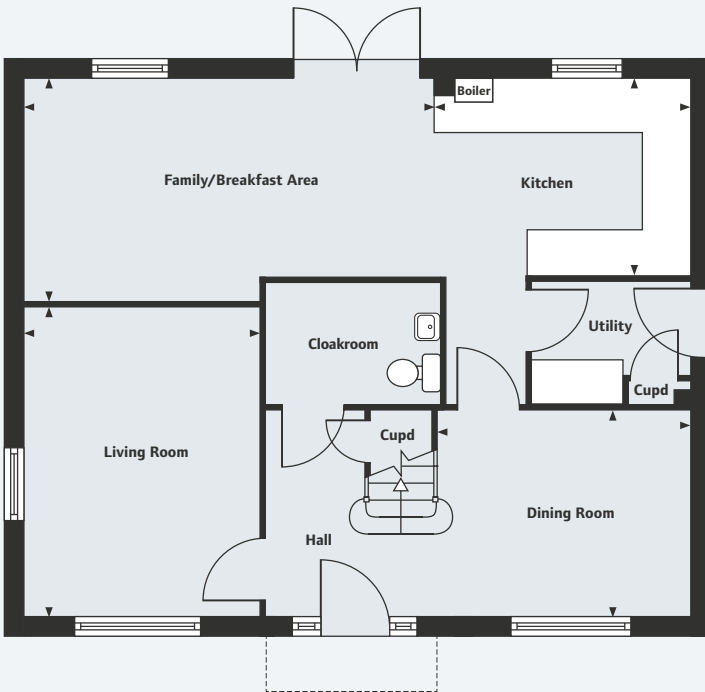
Beaumont Park  
Ringwood

The Fulford  
4 bedroom home



First Floor

Bedroom 1	4.09m x 3.17m	13'5" x 10'5"
Bedroom 2	3.17m x 2.98m	10'5" x 9'9"
Bedroom 3	3.28m x 2.52m	10'9" x 8'3"
Bedroom 4	4.14m x 2.30m	13'7" x 7'7"



Ground Floor

Living Room	4.10m x 3.12m	13'5" x 10'3"
Kitchen	3.44m x 2.59m	11'3" x 8'6"
Family/Breakfast Area	5.53m x 2.92m	18'2" x 9'7"
Dining Room	3.37m x 2.72m	11'1" x 8'11"

\*No window to plots 3 and 21. Please consult your Sales Executive for more details.

Please note, floor plans and dimensions are taken from architectural drawings and are for guidance only. Dimensions stated are within a tolerance of plus or minus 50mm. Overall dimensions are usually stated and there may be projections into these. With our continual improvement policy we constantly review our designs and specification to ensure we deliver the best product to our customers. Computer generated images not to scale and shows home 3. Finishes and materials may vary and landscaping is illustrative only. Kitchen layouts are indicative only and may change. To confirm specific details on our homes please ask your Sales Executive. XLNS467/September 2017.

For all sales enquiries please call  
**01425 383 266**  
[lindenhomes.co.uk/beaumontpark](http://lindenhomes.co.uk/beaumontpark)



—  
**Beaumont Park**

Ringwood  
—

## The Rutherford

4 bedroom home

Homes 11 & 27



### **Beaumont Park**

Crow Lane, Ringwood, Hampshire BH24 3DZ

A collection of 2, 3 & 4 bedroom homes

**01425 383 266**

**Wates**  
DEVELOPMENTS

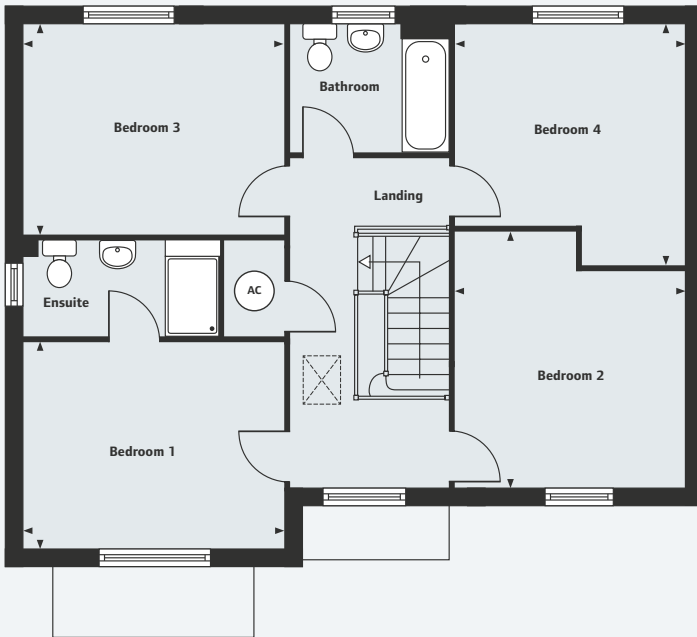
**Linden**  
HOMES

A JOINT VENTURE DEVELOPMENT



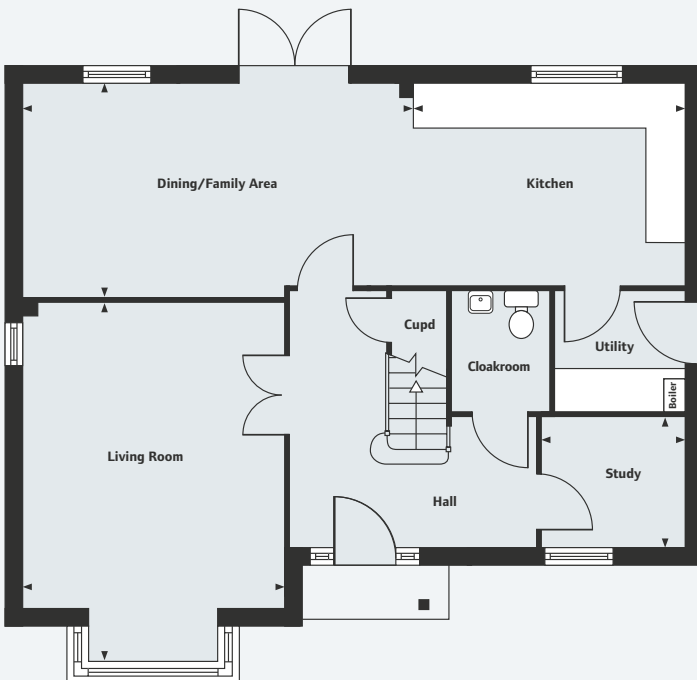
Beaumont Park  
Ringwood

The Rutherford  
4 bedroom home



First Floor

Bedroom 1	3.89m x 3.05m	12'9" x 10'0"
Bedroom 2	3.82m x 3.52m	12'7" x 11'6"
Bedroom 3	3.92m x 3.16m	12'10" x 10'4"
Bedroom 4	3.59m x 3.52m	11'9" x 11'6"



Ground Floor

Living Room	5.34m x 3.90m	17'6" x 12'10"
Kitchen	4.12m x 2.99m	13'6" x 9'10"
Dining/Family Area	5.86m x 3.16m	19'3" x 10'4"
Study	2.19m x 1.93m	7'2" x 6'4"

\*Window to plot 11 only. Please consult your Sales Executive for more details.

Please note, floor plans and dimensions are taken from architectural drawings and are for guidance only. Dimensions stated are within a tolerance of plus or minus 50mm. Overall dimensions are usually stated and there may be projections into these. With our continual improvement policy we constantly review our designs and specification to ensure we deliver the best product to our customers. Computer generated images not to scale. Finishes and materials may vary and landscaping is illustrative only. Kitchen layouts are indicative only and may change. To confirm specific details on our homes please ask your Sales Executive. XLNS467/September 2017.

For all sales enquiries please call  
**01425 383 266**  
[lindenhomes.co.uk/beaumontpark](http://lindenhomes.co.uk/beaumontpark)



A JOINT VENTURE DEVELOPMENT

—  
**Beaumont Park**

Ringwood  
—

## The Clifford

4 bedroom home

Home 28



### **Beaumont Park**

Crow Lane, Ringwood, Hampshire BH24 3DZ

A collection of 2, 3 & 4 bedroom homes

**01425 383 266**

**Wates**  
DEVELOPMENTS

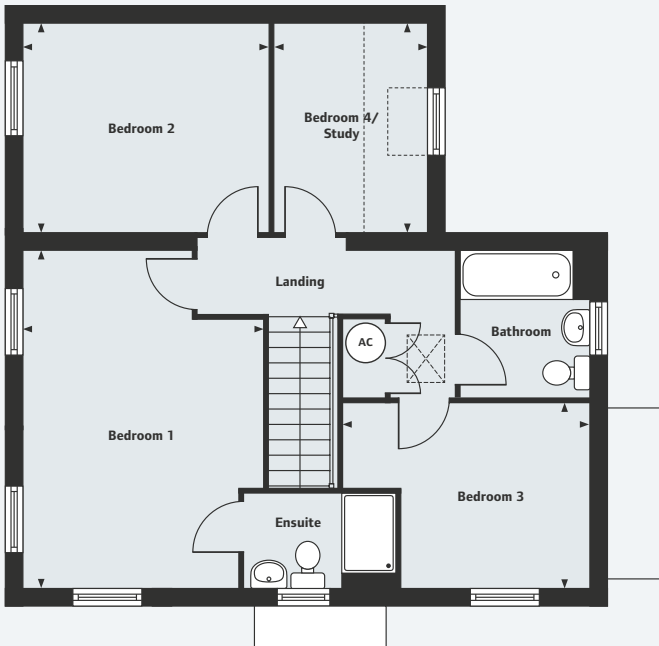
**Linden**  
HOMES

A JOINT VENTURE DEVELOPMENT



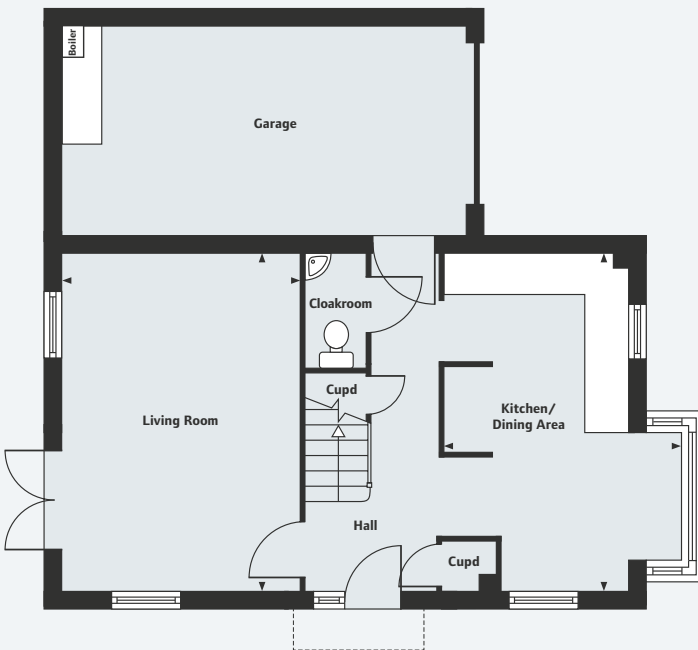
Beaumont Park  
Ringwood

The Clifford  
4 bedroom home



First Floor

Bedroom 1	5.03m x 3.63m	16'6" x 11'11"
Bedroom 2	3.69m x 3.00m	12'1" x 9'10"
Bedroom 3	3.70m x 2.78m	12'2" x 9'1"
Bedroom 4/Study	3.00m x 2.26m	9'10" x 7'5"



Ground Floor

Living Room	5.03m x 3.55m	16'6" x 11'8"
Kitchen/Dining Area	5.03m x 3.69m	16'6" x 12'1"

Please note, floor plans and dimensions are taken from architectural drawings and are for guidance only. Dimensions stated are within a tolerance of plus or minus 50mm. Overall dimensions are usually stated and there may be projections into these. With our continual improvement policy we constantly review our designs and specification to ensure we deliver the best product to our customers. Computer generated images not to scale. Finishes and materials may vary and landscaping is illustrative only. Kitchen layouts are indicative only and may change. To confirm specific details on our homes please ask your Sales Executive. XLNS467/September 2017.

For all sales enquiries please call  
**01425 383 266**  
[lindenhomes.co.uk/beaumontpark](http://lindenhomes.co.uk/beaumontpark)



A JOINT VENTURE DEVELOPMENT

—  
**Beaumont Park**

Ringwood  
—

**The Fairford**

4 bedroom home

Homes 2, 12, 13 & 35



**Beaumont Park**

Crow Lane, Ringwood, Hampshire BH24 3DZ

A collection of 2, 3 & 4 bedroom homes

**01425 383 266**

**Wates**  
DEVELOPMENTS

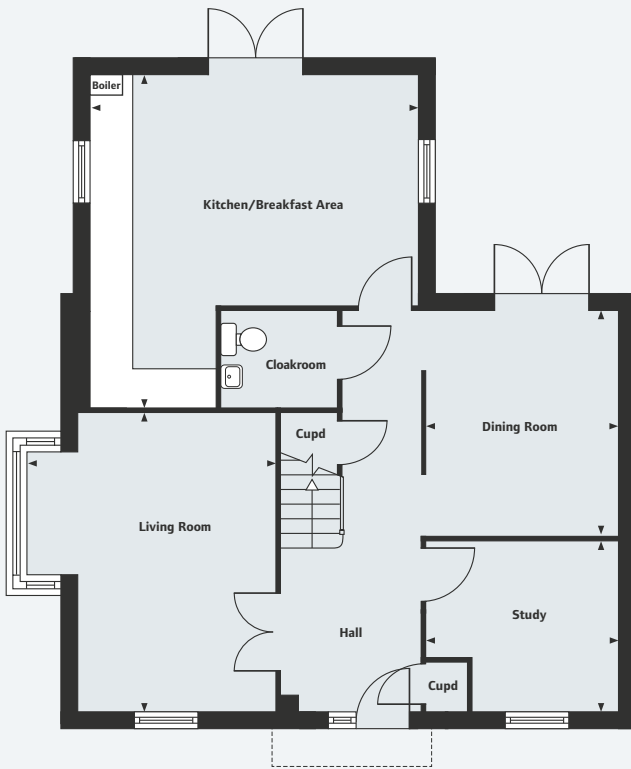
**Linden**  
HOMES

A JOINT VENTURE DEVELOPMENT



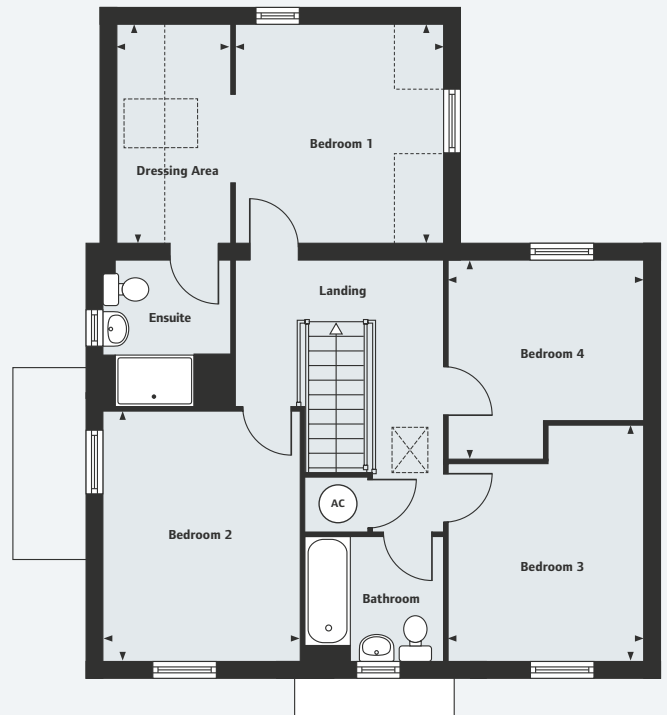
Beaumont Park  
Ringwood

The Fairford  
4 bedroom home



Ground Floor

Living Room	4.66m x 3.87m	15'4" x 12'8"
Kitchen/Breakfast Area	5.19m x 5.14m	17'0" x 16'10"
Dining Room	3.51m x 3.00m	11'6" x 9'10"
Study	3.02m x 2.65m	9'11" x 8'8"



First Floor

Bedroom 1	3.34m x 2.74m	10'11" x 9'0"
Dressing Area	3.34m x 1.80m	10'11" x 5'11"
Bedroom 2	3.90m x 3.13m	12'10" x 10'3"
Bedroom 3	3.66m x 3.04m	12'0" x 10'0"
Bedroom 4	3.11m x 3.04m	10'2" x 10'0"

Please note, floor plans and dimensions are taken from architectural drawings and are for guidance only. Dimensions stated are within a tolerance of plus or minus 50mm. Overall dimensions are usually stated and there may be projections into these. With our continual improvement policy we constantly review our designs and specification to ensure we deliver the best product to our customers. Computer generated images not to scale and shows homes 12 & 13. Finishes and materials may vary and landscaping is illustrative only. Kitchen layouts are indicative only and may change. To confirm specific details on our homes please ask your Sales Executive. XLNS467/September 2017.

For all sales enquiries please call  
**01425 383 266**  
[lindenhomes.co.uk/beaumontpark](http://lindenhomes.co.uk/beaumontpark)



A JOINT VENTURE DEVELOPMENT

	2 bedroom homes	3 bedroom homes	4 bedroom homes
<b>Kitchen</b>			
Symphony fitted kitchen with laminate worktop	•	•	•
Double built-in eye-level oven in stainless steel			•
Single built-under oven in stainless steel	•	•	
Gas hob	•	•	•
Chimney hood			•
Integrated Chimney hood	•	•	
Stainless steel splashback	•	•	•
Integrated fridge freezer			•
Space for dishwasher and washer/dryer	•	•	•
1½ stainless steel sink with mixer tap to kitchen	•	•	•
Multigrad appliance switching to kitchen	•	•	•
Track spotlights	•	•	•
LED Pelmet lighting			•
<b>Bathroom, ensuite and cloakroom</b>			
Contemporary white sanitaryware and chrome fittings	•	•	•
Heated towel rail (not cloakroom)	•	•	•
Half height tiling to walls above bath	•	•	•
Full height tiling to ensuite shower area	•	•	•
Splashback tiling to basins	•	•	•
<b>Electrical</b>			
TV point in living room and bedroom 1	•	•	•
Telephone BT points to living room, family room and bedroom 1			•
Telephone BT points to living room and bedroom 1	•	•	
Batten light fittings to bathrooms, cloakrooms and ensuite	•	•	•
Pendant fittings to other rooms including low energy fittings	•	•	•
White plastic switchplates and sockets	•	•	•
<b>Other</b>			
Walls in matt white emulsion	•	•	•
Ceilings – flush smooth finish in white emulsion	•	•	•
Internal woodwork in gloss white	•	•	•
White internal doors with chrome ironmongery	•	•	•
Gas fired system boiler with cylinder			•
Gas fired combi boiler	•	•	
External door with multipoint locking system	•	•	•
Low energy external light to front door	•	•	•
External tap to rear garden	•	•	•

**Peace of mind**

Each home will be independently surveyed during construction by the NHBC, who will issue their 10 year warranty certificate on completion of the home.

**Beaumont Park**  
Crow Lane, Ringwood, Hampshire BH24 3DZ  
A collection of 2, 3 & 4 bedroom homes

**01425 383 266**

Please refer to the Sales Executive for details. Specification may be amended at any time without notice. Photography is for illustrative purposes only and may include upgrades and extras available at additional cost. XLN5467/September 2017.





