

The Wycliffe

Four bedroom home

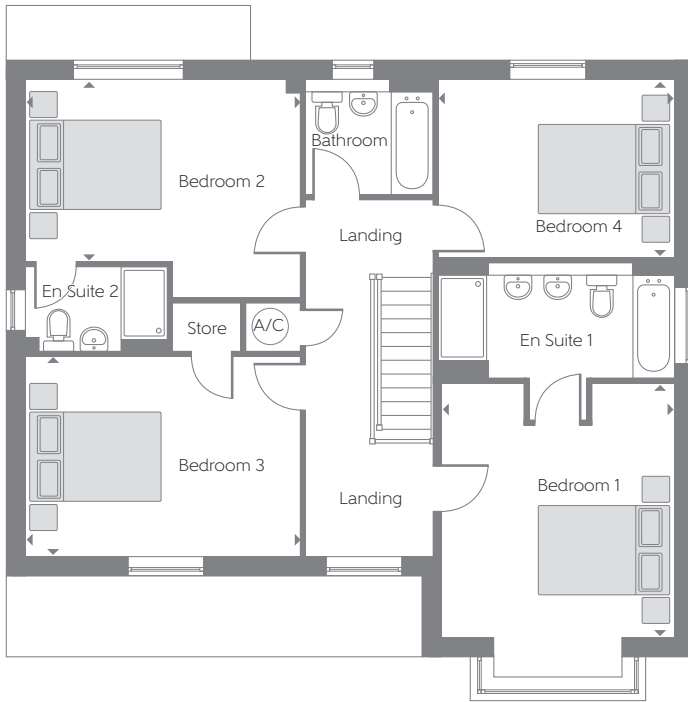


Please note: There are further elevational variations to this housetype. Please see Sales Advisor for details of your chosen plot.

Bellway Homes Limited (South West)
The Hub, 500 Park Avenue, Aztec West,
Almondsbury, Bristol, BS32 4RZ

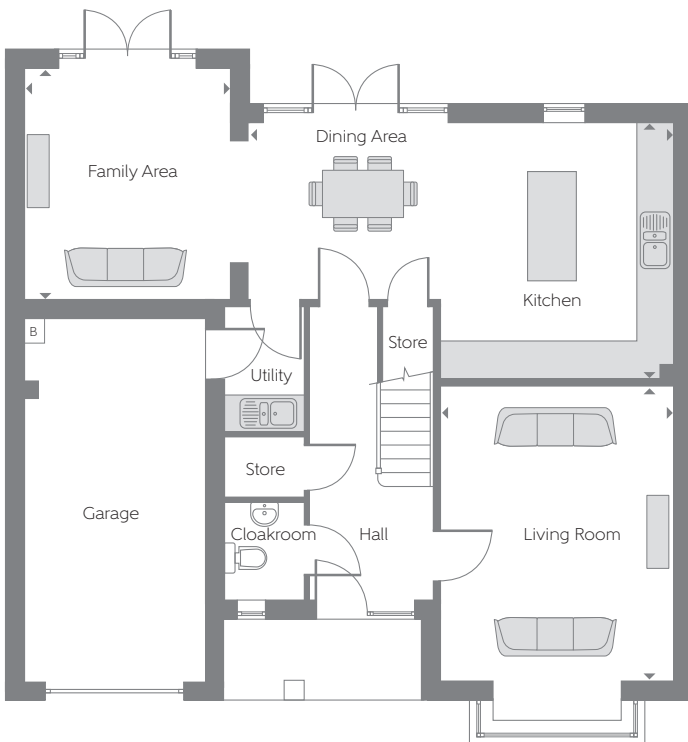
Telephone: 01454 451960
www.bellway.co.uk

Bellway



First Floor

Bedroom 1	4.231m x 3.874m (not incl. bay)	13'10" x 12'8" (not incl. bay)
Bedroom 2	4.572m x 3.039m (min)	15'0" x 9'11" (min)
Bedroom 3	4.572m x 3.325m	15'0" x 10'10"
Bedroom 4	3.934m x 3.041m	12'10" x 9'11"



Ground Floor

Kitchen/ Dining Area	7.020m x 4.255m (max) (max)	23'0" x 13'11" (max) (max)
Family Area	3.855m x 3.434m	12'7" x 11'3"
Living Room	4.900m x 3.884m (not incl. bay)	16'0" x 12'8" (not incl. bay)

1819 sq ft

B Boiler A/C Airing Cupboard ▶ Indicates where dimension taken from

Some items shown in this key may be subject to change, and positions could vary from those indicated on this floorplan. Please refer to Sales Advisor for details of your selected plot. Computer generated image shown overleaf. External finishes, landscaping and configuration may vary from plot to plot. Please refer to Sales Advisor for further details. All dimensions are approximate and should not be used for carpet sizes, appliance spaces, or furniture. Furniture not to scale and all positions are indicative. Wardrobes are shown to suggest position only, and are not included as standard unless otherwise stated. We operate a policy of continuous improvement and individual features such as kitchen and bathroom layouts, doors, windows, garages and elevational treatments may vary from time to time. Consequently these particulars should be treated as general guidance only and do not constitute a contract, part of a contract or a warranty. 09/17