



Thriftswood

Stevens Hill, Yateley, Hampshire. GU46 6AY

SALES | LETTINGS | LAND AND NEW HOMES



mackenzie smith



- Built in 1929
- Grandeur, Edwardian design
- Substantial sweeping driveway
- Many original features
- Triple aspect drawing room
- Formal dining room
- Family room
- Home office
- Six bedrooms
- En Suite bathroom to the master bedroom
- Grounds covering two acres
- Two detached garages
- Detached stables
- Paddock land
- Allotment with a green house
- Formal gardens
- Commuter location



Set on a secluded and well-screened plot of two acres, Thriftswood is a rare surviving, highly original example of a substantial and unique Edwardian family home.

Built in 1929 the home has a wealth of interesting history surrounding it, as well as offering charming character features, peaceful and idyllic rural surroundings and a variety of spacious rooms to offer a multitude of uses.

This statement home, built across three storeys, benefits from a sought after location, highly commutable with a variety of amenities and well-regarded schools.

The grounds of the home present a selection of attributes, from manicured formal gardens, stables, paddocks, to an allotment with a green house.

There is much to marvel at throughout this majestic home.



To the end of a sweeping driveway off Stevens Hill, the main house occupies a central, elevated position within the grounds. To the front of the house, there is a large expanse of open lawn, which was originally the grass tennis court. Across the grounds are a number of outbuildings, including three garages for four cars and a studio annexe which features a kitchenette and shower room. A stable block adjoins an enclosed paddock of circa 0.25 of an acre.

The opposite and rear south facing gardens slope away from the house and are largely laid to lawn with mature trees, bushes and a small pond creating pleasant features throughout.

A large proportion of the rear boundary borders Yateley common, with the remainder adjacent to Trust held land which cannot be developed. The western aspect has a magnificent tree lined outlook with a lake. These areas combine to offer glorious rural views with a high level of seclusion and privacy.

Thriftswood provides extensive accommodation across three storeys, with six bedrooms, tall ceilings and an excellent use of space. Of particular note are the elegant triple aspect drawing room, the dining room with a grand fireplace and the kitchen/breakfast room with an adjoining boot room and utility room. All bedrooms offer excellent views and as an added feature there is a walk-in attic with access to the roof.





History and Design

The house was designed by the architect Cpt A C Martin, an eminent student of Lutyens. He had been engaged to extend the chapel at the Royal Military Academy Sandhurst and designed Thriftswood at the same time. The property has been traditionally constructed, with many interesting, original Lutyens style architectural and decorative features; including intricate brickwork, Dutch gables and a vaulted ceiling within the entrance hall.

Thriftswood was originally built for the Stilwell family. For many years they were a local "landed gentry" family who owned most of Yateley along with founding Stilwell & Sons bank (bankers to the Royal Navy), now part of Natwest. The family were pillars of the local community but also had links with Admiral Nelson and Sir Robert Fitzroy, father of the Met Office and ship's captain to Charles Darwin during the "Origin of the Species" voyage,

During World War II, many weary British and Commonwealth aircrew from the nearby RAF Hartford Bridge (Blackbushe Airport) enjoyed respite in the house.

The original layout had a separate back staircase accessing the servants' quarters.

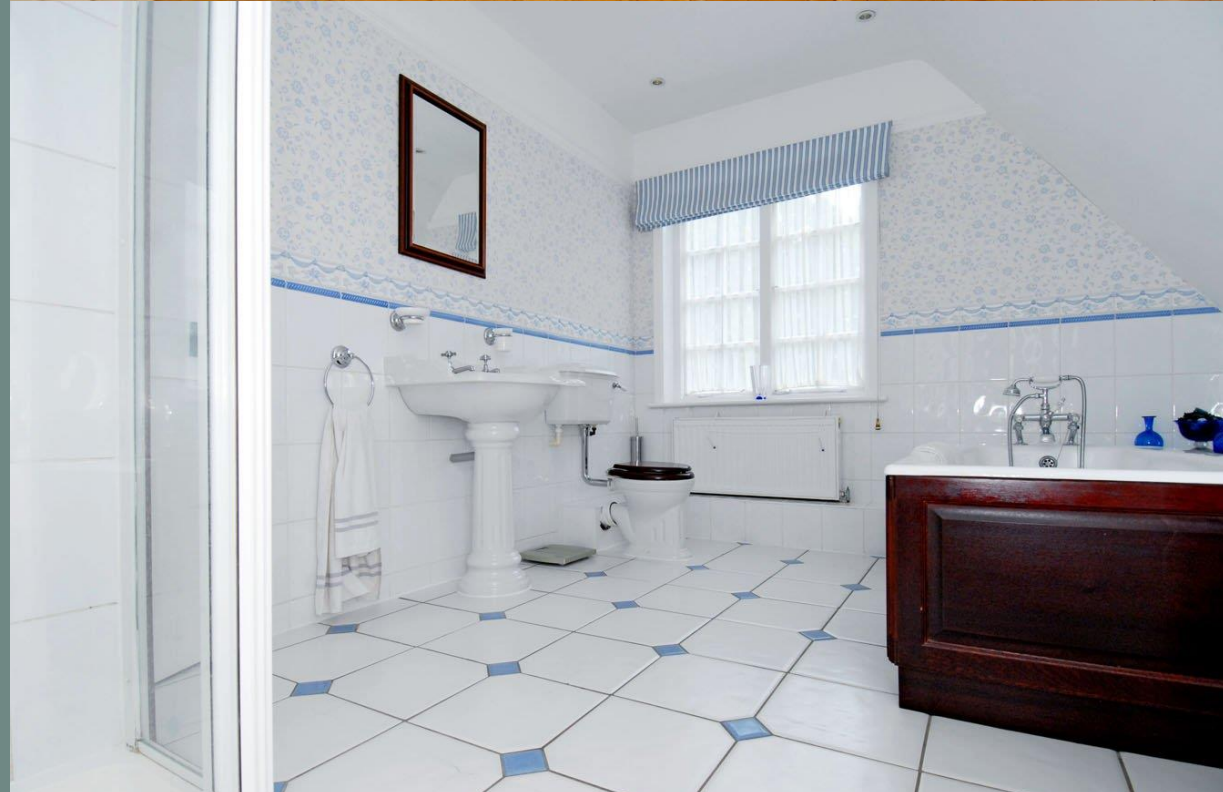


Location

Although the property is nestled in a remarkably tranquil setting, Thriftswood is well located for transport connections, with the M3 (Jct 4a) 10 minutes away and rail access to London Waterloo available from Fleet, Farnborough or Camberley stations in approximately 40mins – 1 hour.

The M25 is also accessible, allowing access to Heathrow (approx. 45 mins) and Gatwick (approx. 1 hr). The M4 is also only 15 mins away.

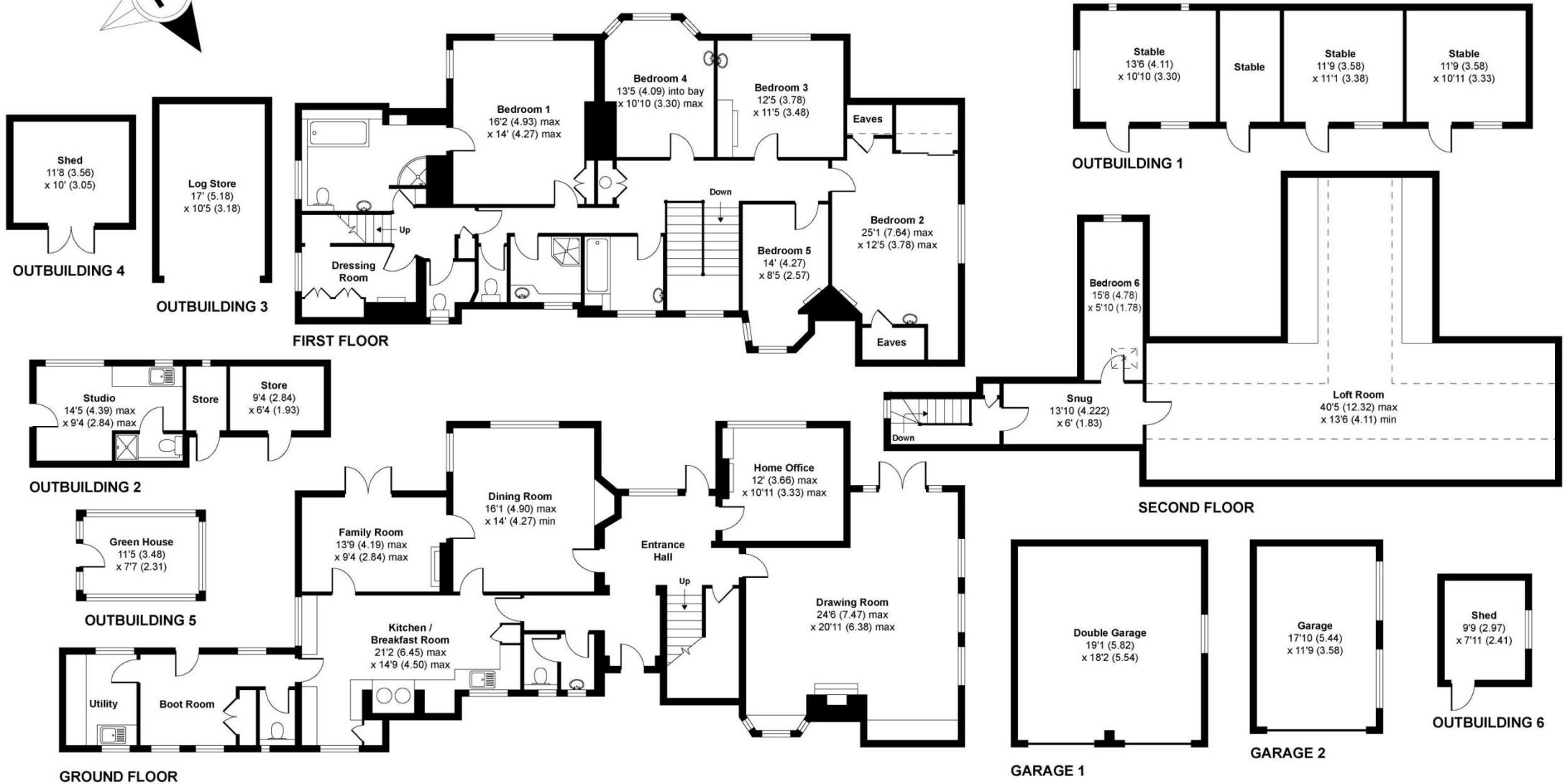
Yateley benefits from a high caliber of local schools, both public and private. The town also features a wide selection of local amenities, with the larger towns of Fleet, Farnborough and Camberley just a short distance.





Thriftswood, Stevens Hill, Yateley, Hampshire, GU46

APPROX. GROSS INTERNAL FLOOR AREA 4448 SQFT / 413.2 SQM (Includes Detached Garages & Excludes Outbuildings)





Directions

From Blackbushe airport, continue along the A30 in the direction of Camberley, at the next roundabout, turn left onto Cricket Hill Lane. After about a mile, take the next right into Stevens Hill, then right again. The property can be found after a short distance on your right.

Viewing

For further information or to arrange a viewing please contact us on 01252 844015.

Energy Efficiency Rating

Current: F | Potential: E

Millbank House, High Street, Hartley Wintney, Hampshire RG27 8PE

T: 01252 844015

E: Hartleywintney@mackenziesmith.co.uk

FLEET | FARNBOROUGH | ASH VALE | HARTLEY WINTNEY | HOOK | YATELEY

