

We overlook nothing... but the water

WATERSIDE
PROPERTIES



Southbourne Coast Road, Bournemouth Southbourne, Dorset, BH6 4BQ



An outstanding opportunity to acquire a stunning sea front house set in ONE OF THE FINEST POSITIONS ON THE SOUTH COAST, enjoying uninterrupted panoramic views of the coast line from Hengistbury Head and the Isle of Wight in the East to the Isle of Purbeck in the West. The property has been designed to maximise the breathtaking 180 degree sea views.

Superb 180 degree sea views – 5 Bedroom detached seafront home – Ample parking and garaging – South facing garden – Set in a private location with no neighbours either side.

£2,250,000 Freehold

WAVECREST

Wavecrest is a unique property in an elevated position in one of the most enviable locations on this section of the South coast. Its privacy is protected by the fact that there are no neighbouring properties on either side. The views from all of the principal rooms and garden are breathtaking, stretching from Hengistbury Head and the Isle of Wight in the East and across Poole Bay to the Isle of Purbeck in the West.



The five bedroom house has accommodation over three floors and is approached via a horseshoe in and out driveway. The excellent ground floor accommodation enjoys easy access to the garden and outstanding views are seen from all principle rooms. The property is offered in superb condition throughout and internal viewing is highly recommended.



OUTSIDE & GARAGES

To the front is a horseshoe driveway with ample parking and access to two double garages with internal access. To the rear is a magnificent private garden laid to lawn with planted borders, patio with a central path to an eating/sitting area with stunning views straight out over the beautiful sandy beach and the sea beyond.



The coastline has stunning views over Poole Bay and beyond with many sport and recreational facilities close by; sailing clubs, water sports, relaxed walks and golf clubs. Southbourne's primary attraction is its sandy Blue Flag beach, which provides a quieter retreat from the more crowded beach along the coast at Bournemouth. There is a promenade extending from Hengistbury Head through to Sandbanks.

ACTIVITIES & TRANSPORT

Wavecrest is ideally situated for the beach front promenade which is at the bottom of the garden and runs along the beach direct to Sandbanks Chain Ferry which you can walk or ride - 7.8miles
Southbourne High street - 1.4 miles
Bournemouth Pier - 3 miles
Christchurch town centre - 2.0 miles
Sea & beaches - Bottom of garden
Hengistbury Head - 600meters
Solent Meads Golf Centre - 600meters
Christchurch Sailing Club - 2.0 miles
Christchurch Harbour - 1.2 miles
Bournemouth airport - 5.4 miles
Bournemouth station - 4.2 miles, 100minutes to London Waterloo



COUNCIL TAX Band G £2,497.80

SERVICES

All mains services are available at the property. We would emphasise that none of the services or equipment referred to in these particulars have been tested.

EPC Rating E

NOTE

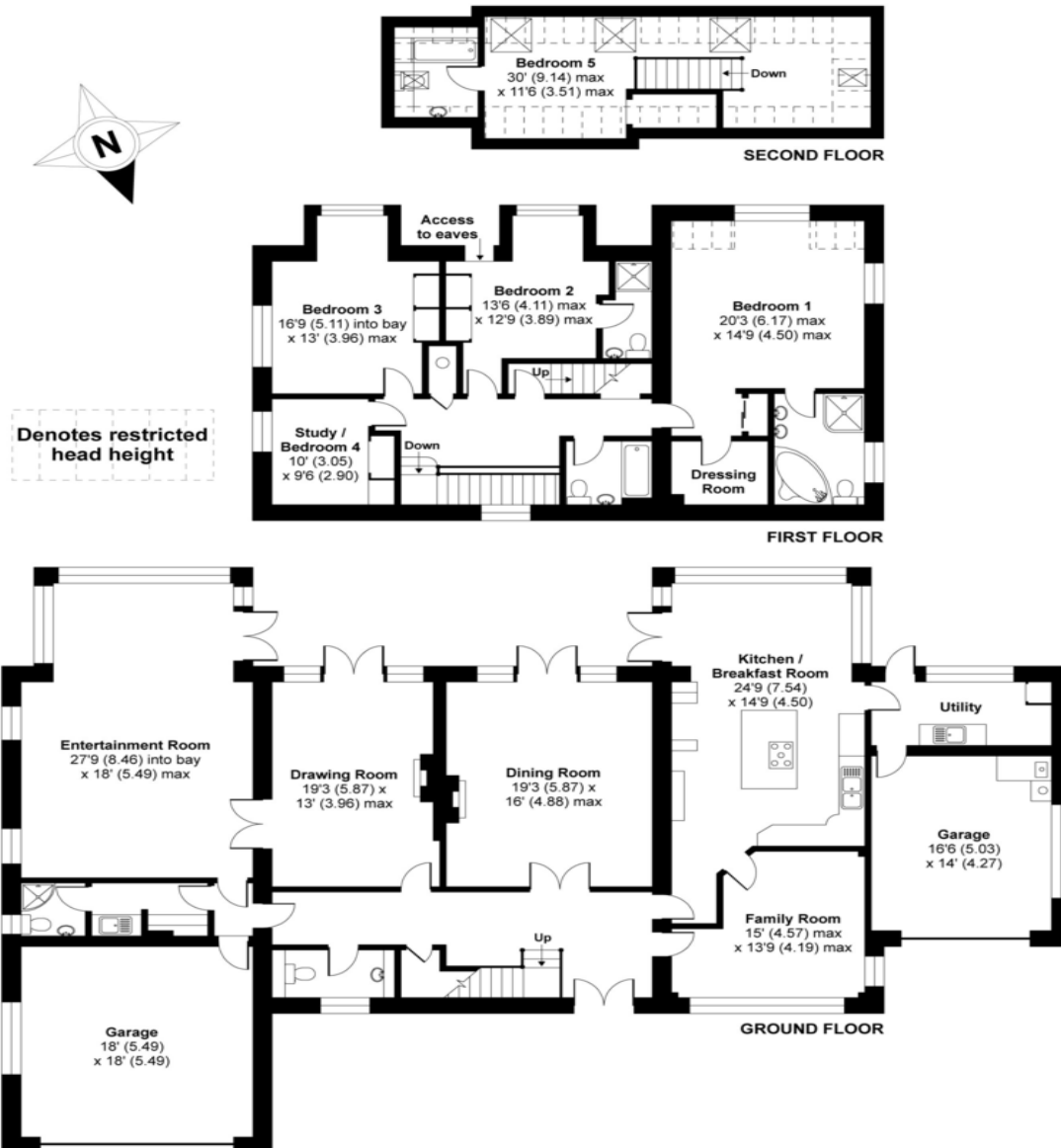
Photographs may have been taken with a wide angle or telephoto lens and are intended to give an overall image of the property.



Floor Plan

Southbourne Coast Road, Bournemouth, BH6

APPROX. GROSS INTERNAL FLOOR AREA 4300 SQ FT 399.4 SQ METRES
(INCLUDES GARAGES & RESTRICTED HEAD HEIGHT)



Whilst every attempt has been made to ensure the accuracy of the floor plan contained here, measurements of doors, windows and rooms are approximate and no responsibility is taken for any error, omission or misstatement. These plans are for representation purposes only as defined by RICS Code of Measuring Practice and should be used as such by any prospective purchaser. Specifically no guarantee is given on the total square footage of the property if quoted on this plan. Any figure given is for initial guidance only and should not be relied on as a basis of valuation.

Copyright nichecom.co.uk 2015 Produced for Leaders Watrside REF : 32003

**Viewing through Waterside Properties – Waterside Properties 01202 974 891
bournemouth@watersideproperties.com**

Important Notice:

Waterside Properties, their clients and any joint agents give notice that:

1. They are not authorised to make or give any representations or warranties in relation to the property either here or elsewhere, either on their own behalf or on behalf of the client or otherwise. They assume no responsibility for any statement that may be made in these particulars. These particulars do not form part of any offer or contract and must not be relied upon as statements or representations of fact.
2. Any areas, measurements or distances are approximate. The text, photographs and plans are for guidance only and are not necessarily comprehensive. It should not be assumed that the property has all necessary planning, building regulation or other consents and Waterside Properties have not tested any services, equipment or facilities. Purchasers must satisfy themselves by inspection or otherwise.