



FLAT 4 MANOR APARTMENTS

40-42 ABBEY ROAD • ST JOHNS WOOD • NW8 0AR

FOR SALE

FLAT 4
MANOR APARTMENTS
40-42 ABBEY ROAD
ST JOHNS WOOD
NW8 0AR

GROUND FLOOR
2 BEDROOMS
2 BATHROOMS
1,006 SQ FT
PRICE: ON APPLICATION

FEATURES:

- Private patio
- CCTV
- Crestron automated system
- Dark oak timber floors
- Black lacquered media unit
- Macassar kitchen with brown granite work surface
- Marble bathrooms with black lacquered vanity unit with inset bevelled mirrors
- Custom built black lacquered effect fitted wardrobes with inset bevelled mirrors

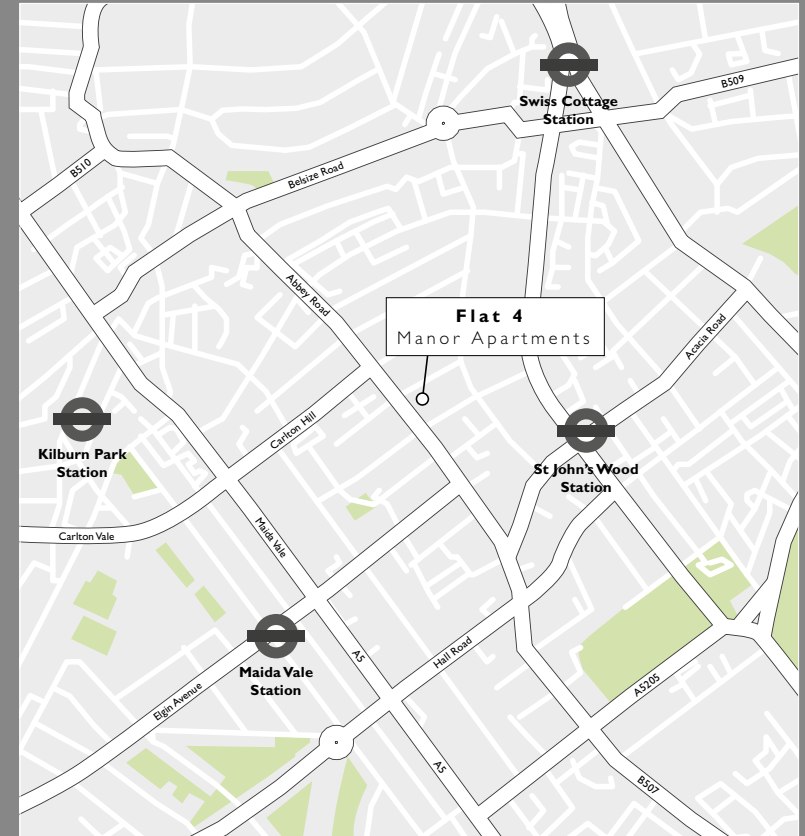
RESIDENTIAL LAND





GROUND FLOOR

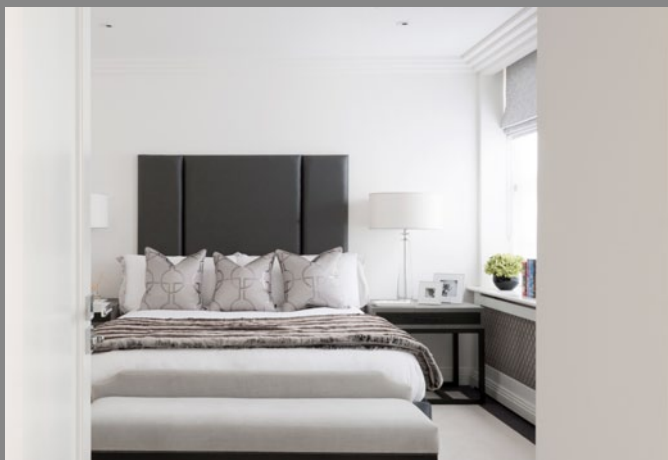
Approx Gross Internal Area
1006 Sq Ft - 93.46 Sq M



AREA INFORMATION

St John's Wood is ringed by other traditionally affluent areas – Belsize Park, Hampstead, Maida Vale, Little Venice and Primrose Hill. A gentle stroll finds you in Regent's Park, also known as the 'jewel in the crown' of Henry VIII's royal parks. St John's Wood is one of the capital's most prosperous areas and Manor Apartments is located just minutes from vibrant shopping areas where haute couture boutiques, quirky independent shops and thriving cafés, bars and restaurants unite to create a unique village feel.

London's premier shopping districts – Oxford Street, Bond Street, Knightsbridge and Mayfair – lie within minutes of Abbey Road via the St John's Wood underground station on the Jubilee line. The area also attracts the world's most ambitious students at the London Business School, thanks to their rich portfolio of graduate and post graduate programmes.



CONTACT DETAILS

Vanessa Vaara

+44 (0)7930 307 708

vanessa@residentialland.com

Emma Whitby-Smith

+44 (0)7930 347 490

emma@residentialland.com

+44 (0)20 7408 5155

www.residentialland.com

RESIDENTIAL LAND