

# ROKSTONE



## Upper Grosvenor Street, Mayfair W1K

A beautifully refurbished three bedroom duplex apartment measuring 1782 sq ft ideally located just off Grosvenor Square. Situated over the first and second floors of this popular period building in the heart of Mayfair, the apartment benefits from a 24 hour porter, a passenger lift and a private communal garden for residents to use. The first floor boasts a huge double reception room ideal for entertaining with great ceiling height and wide windows allowing views directly onto Grosvenor Square Gardens. Adjacent to the reception room is a separate fully fitted kitchen. The second floor consists of three double bedrooms all facing on to the pretty gardens and three luxurious bathrooms. Upper Grosvenor Street runs between Grosvenor Square and Park Lane and is walking distance to Hyde Park and to the boutiques and restaurants of Mount Street.

**Price £6,350,000**

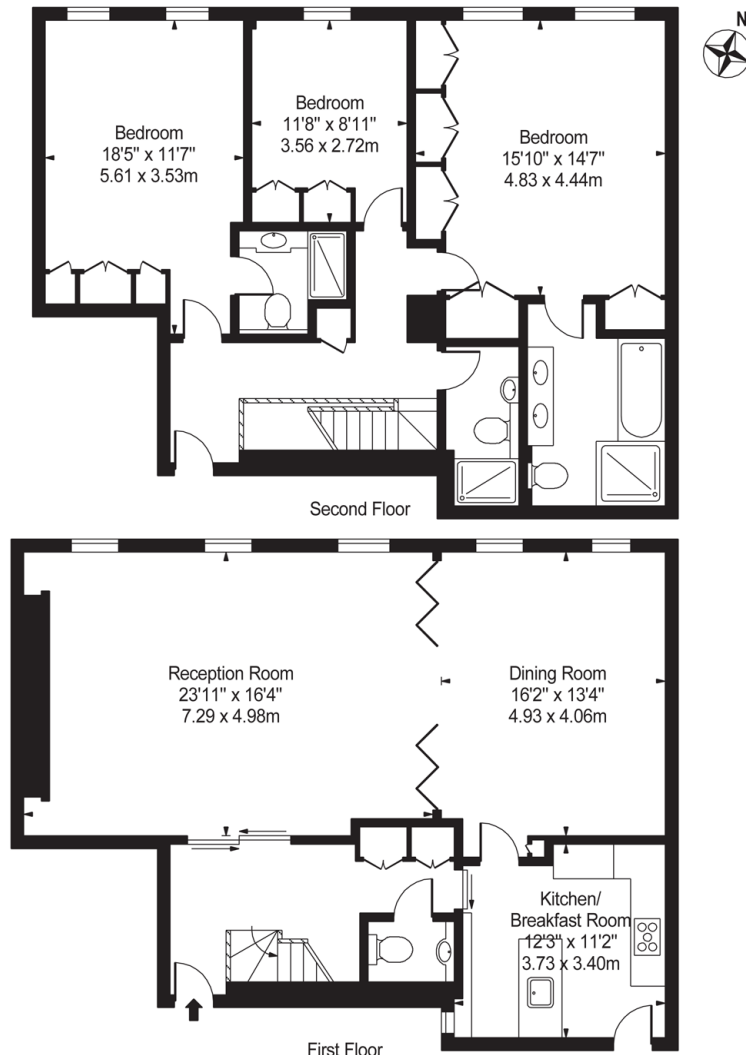


5 Dorset Street London W1U 6QJ  
Tel: 020 7580 2030 | Email: [enquiries@rokstone.com](mailto:enquiries@rokstone.com)  
[www.rokstone.com](http://www.rokstone.com)



# ROKSTONE

## Upper Grosvenor Street Approx. Gross Internal Area 1782 Sq Ft - 165.55 Sq M



For Illustration Purposes Only - Not To Scale

This floor plan should be used as a general outline for guidance only and does not constitute in whole or in part an offer or contract. Any intending purchaser or lessee should satisfy themselves by inspection, searches, enquiries and full survey as to the correctness of each statement. Any areas, measurements or distances quoted are approximate and should not be used to value a property or be the basis of any sale or let.

