

Kenton

020 3375 6424  
Andrewsonline.co.uk

Andrews 

DRAFT  
DETAILS



**Northwick Avenue, HARROW**

£1,500,000

Middlesex, HA3 0AB



## A beautiful and charming family home offering extensive accommodation set within a well-regarded location.



This charming residence offers an opportunity to live in a home that meets your family's every need. The property is a purpose-built, dual fronted detached house with an abundance of space, character and original features. The property has been to a degree altered with much thought and skill and now offers substantial accommodation.

The spacious and welcoming entrance hall leads you through the ground floor to a guest W.C., a formal dining room, a comfortable family lounge and a good sized kitchen, which is in keeping with a house of this standard and has a range of storage and fitted appliances. Following the sweeping staircase onto the spacious first floor landing you will find four generously sized bedrooms and family bathroom. The master bedroom benefits from a modern fitted four piece en-suite. A further wonderful feature of this property is a truly lovely annexe, which is arranged as a self-contained flat with its own kitchen/diner, lounge and front aspect double bedroom with fitted wardrobes and en-suite bathroom. The annexe has access to the street via a brick-built porch. This of course makes this already versatile home even more desirable as benefiting from the option for guest or full-time family member accommodation. Externally, this residence provides parking for 4/5 cars on the carriage-style drive.



## Kenton

020 3375 6424

Andrewsonline.co.uk



### Summary

- Detached Home
- Well Regarded Location
- Four Bedrooms
- Formal Lounge & Dining Room
- Bespoke Kitchen
- Independent Separate Annexe
- Landscaped Rear Garden
- Access to Northwick Park Station & Kenton Bakerloo

### Highlights



248.0 sq. m. (2,669 sq. ft.)



Northwick Park Metropolitan Line 0.1 miles zone 4  
Kenton Overground/Bakerloo Line 0.2 miles zone 4



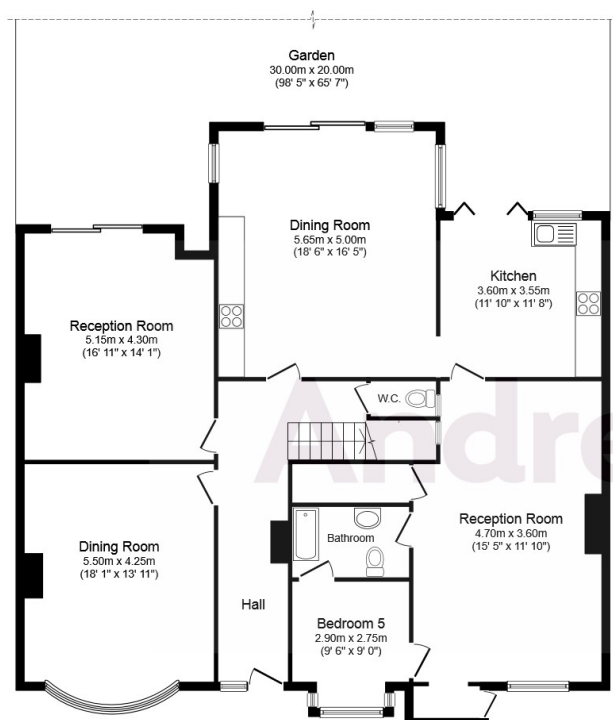
Elmgrove Primary, Byron Court Primary, Mount Stewart Primary, Norbury Primary, Uxendon Manor Primary



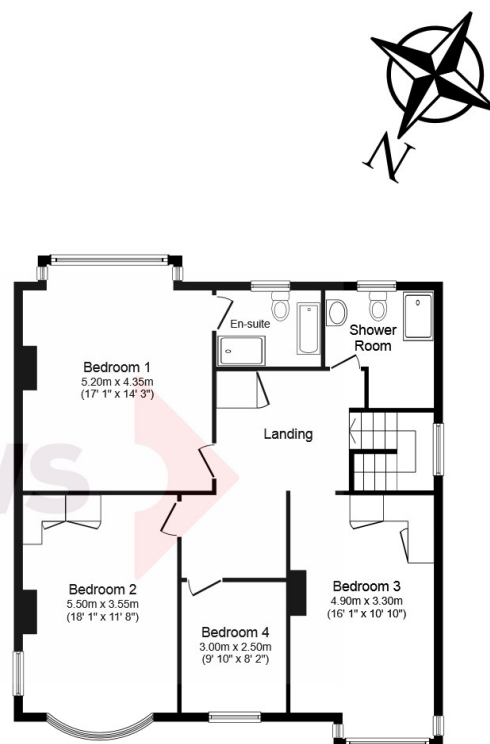
Harrow High, St. Gregory's Catholic School, Wembley High Technology College

## Interested in this property?

For viewings and advice please get in touch with our Kenton branch on 020 3375 6424



**Ground Floor**



**First Floor**

Northwick Avenue, Harrow, HA3

Total floor area 248.0 sq. m. (2,669 sq. ft.) approx

This plan is for illustration purposes only and may not be representative of the property. Plan not to scale.

Powered by Audioagent.com

## The Andrews Small Print

This listing contains no artificial colours, no photo doctoring, no super-wide angle images, no props, no overstatement, no pressure and no urgency. Instead you can count on our reassuring advice and refreshing service to help you with the big decisions.

## Disclaimer

We haven't tested any of the appliances listed in these details, or asked for warranty or service certificates, unless stated – they're on an 'as seen' basis.

You should only use floor plans as a general guide to room layout and design, as they're not exact. You can find out how we've measured them in our Andrews Guide to Measuring, which you can ask for at any of our branches.

If you're interested in this property, you need to come through us for all negotiations. Please note that neither these details, nor anything we've said about the property, are part of an offer or contract, and we can't guarantee their accuracy.