



THE EDGE

BRIXTON
FT. Taylor
Wimpey

A IS FOR

ARTISTIC

FEATURING 1, 2 & 3 BEDROOM APARTMENTS

EACH WITH A BALCONY OR TERRACE.

READY FOR YOUR ARTISTIC TOUCH.



IT'S ALL IN THE DETAIL.

KITCHENS

Superb designer kitchens with integrated appliances – electric oven, hob, extractor, fridge/freezer – and your choice of worktops and kitchen units.*

BATHROOMS/EN SUITES

Sparkling white sanitaryware with chrome fittings, thermostatic shower and glass shower screen, plus your choice of coloured ceramic tiles.*

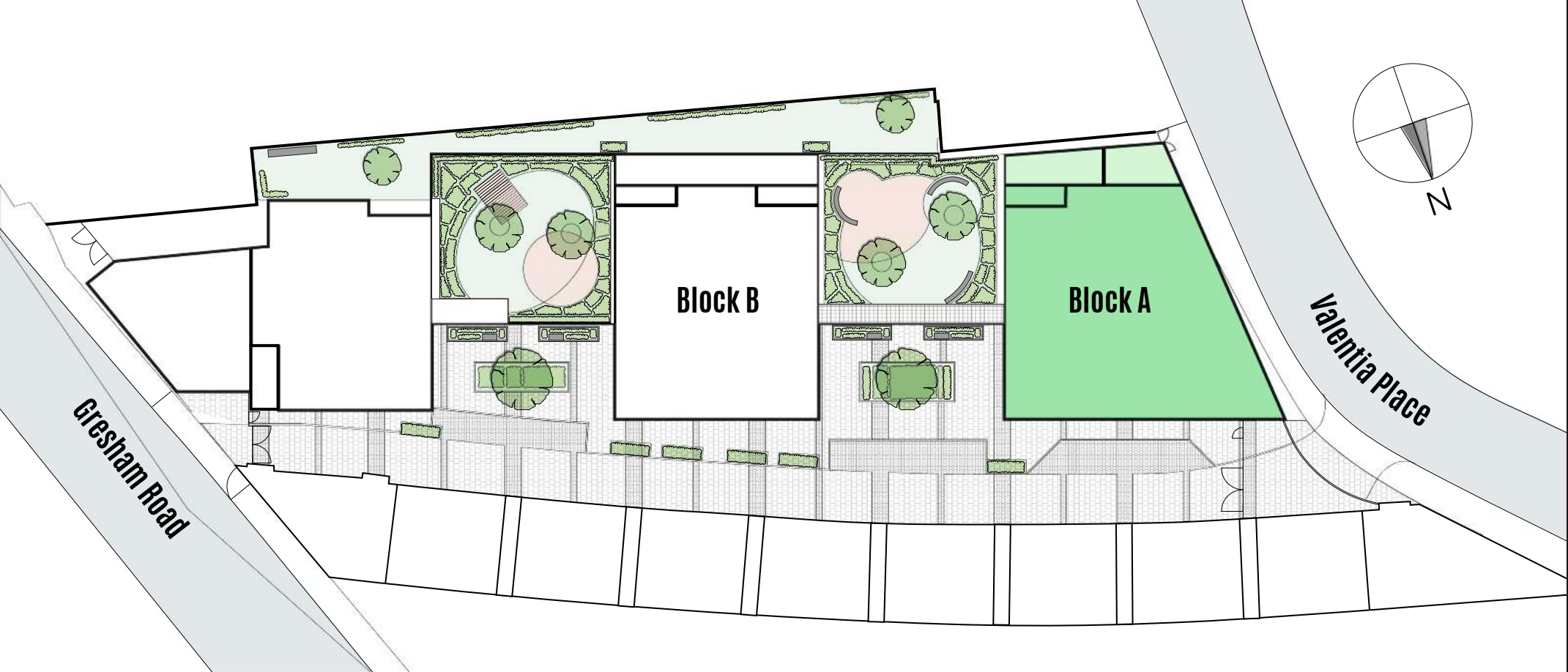
ELECTRICS

TV/SAT/DAB/FM point in living room, TV points in all bedrooms, landline point, LED downlighters, shaver points, heated towel rails – the list goes on.

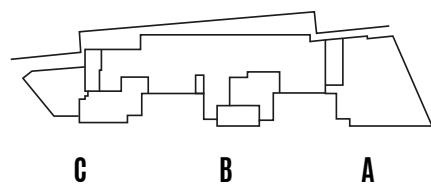
GENERAL

Walls, ceilings and woodwork painted white, video door entry system, acoustically enhanced double glazing – ask about further options available.

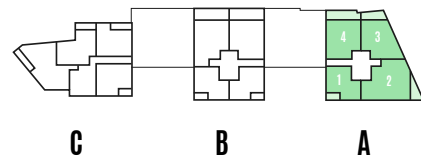
*Choices from our selected range, available subject to stage of construction.



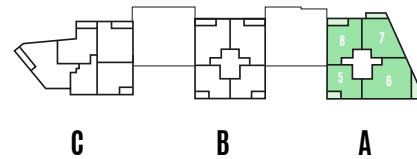
GROUND FLOOR



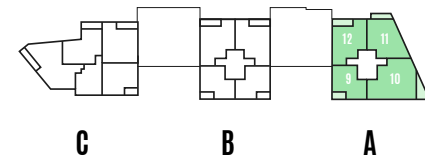
FIRST FLOOR



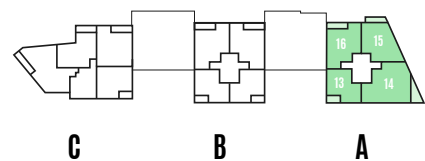
SECOND FLOOR



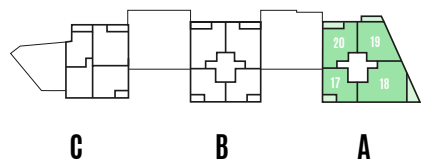
THIRD FLOOR



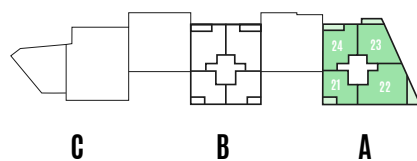
FOURTH FLOOR



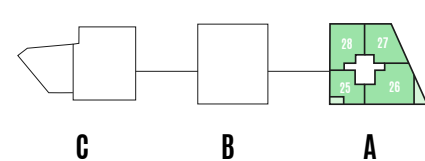
FIFTH FLOOR



SIXTH FLOOR



SEVENTH FLOOR



Floor plan disclaimer

The floor plans depict a typical layout of this house type. For exact plot specification, details of external and internal finishes, dimensions and floor plan differences consult your Sales Executive. The internal overall floor area quoted is measured to the unfinished blockwork – this is referred to as the gross internal floor area (GIA). The individual room dimensions are measured to the face of the plasterwork – this is referred to as the net internal floor area. All dimensions are + or - 50mm and floor plans are not shown to scale.

Site plan disclaimer

The Development Layout does not show details of gradients of land, boundary treatments, local authority street lighting or landscaping. It is our intention to build in accordance with this layout. However, there may be occasions when the house designs, boundaries, landscaping and positions of roads and footpaths change as the development proceeds. Please check the details of your chosen property with your Sales Executive prior to reservation.

CGI disclaimer

The images in this brochure are from an imaginary viewpoint within an open space area. Their purpose is to give a feel for the development, not an accurate description of each property. The illustration shows a typical Taylor Wimpey home of this type, but there are, however, variances from site to site. External materials, finishes, landscaping, (where provided) may vary throughout the development. Properties may also be built handed (mirror image). Please enquire for further details.



Please note: The regeneration of the railway arches is being undertaken by others, and may differ from what is shown in the computer generated image.

LIFE IS GOOD,
NOW MAKE A PLAN.

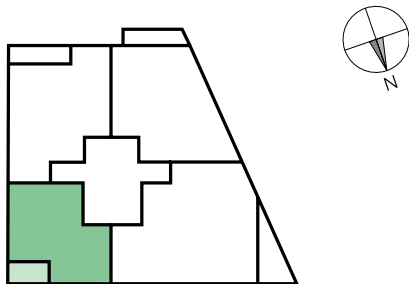
FLOOR PLANS ...

TYPE E

1 BEDROOM

APARTMENTS
1, 5, 9, 13, 17, 21 & 25

Kitchen/Living Room/Dining Area	
6.32m x 3.48m	20'9" x 11'5"
Master Bedroom	
4.50m x 2.75m	14'9" x 9'0"
Total Gross Internal Floor Area	
51.9sq m	559sq ft



APARTMENT 1	1ST FLOOR
APARTMENT 5	2ND FLOOR
APARTMENT 9	3RD FLOOR
APARTMENT 13	4TH FLOOR
APARTMENT 17	5TH FLOOR
APARTMENT 21	6TH FLOOR
APARTMENT 25	7TH FLOOR

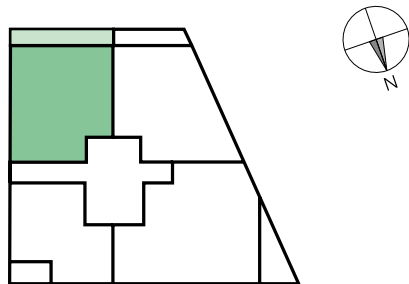


TYPE F⁺

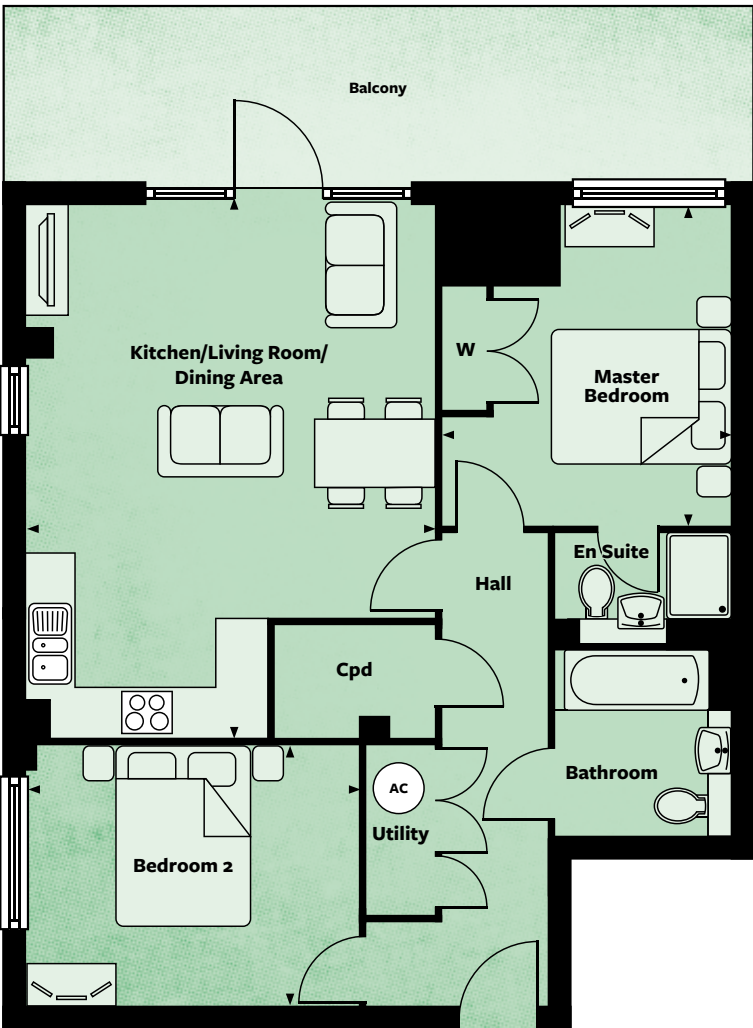
2 BEDROOM

APARTMENT
4

Kitchen/Living Room/Dining Area	
6.32m x 4.83m	20'9" x 15'10"
Master Bedroom	
3.79m x 3.42m	12'5" x 11'3"
Bedroom 2	
3.93m x 3.09m	12'11" x 10'2"
Total Gross Internal Floor Area	
72.9sq m	785sq ft



APARTMENT 4	1ST FLOOR
	2ND FLOOR
	3RD FLOOR
	4TH FLOOR
	5TH FLOOR
	6TH FLOOR
	7TH FLOOR

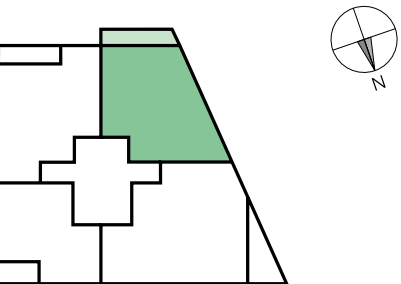


+This apartment has a flue in the master bedroom.

TYPE J 2 BEDROOM

APARTMENTS
3, 7, 11, 15, 19, 23 & 27

Kitchen/Living Room/Dining Area	
6.32m x 5.64m	20'9" x 18'6"
Master Bedroom	
3.55m x 3.31m	11'8" x 10'10"
Bedroom 2	
4.84m x 3.09m	15'11" x 10'2"
Total Gross Internal Floor Area	
74.5sq m	802sq ft



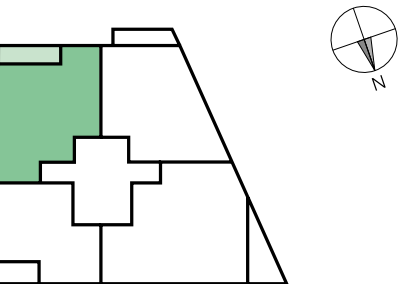
APARTMENT 3	1ST FLOOR
APARTMENT 7	2ND FLOOR
APARTMENT 11	3RD FLOOR
APARTMENT 15	4TH FLOOR
APARTMENT 19	5TH FLOOR
APARTMENT 23	6TH FLOOR
APARTMENT 27	7TH FLOOR



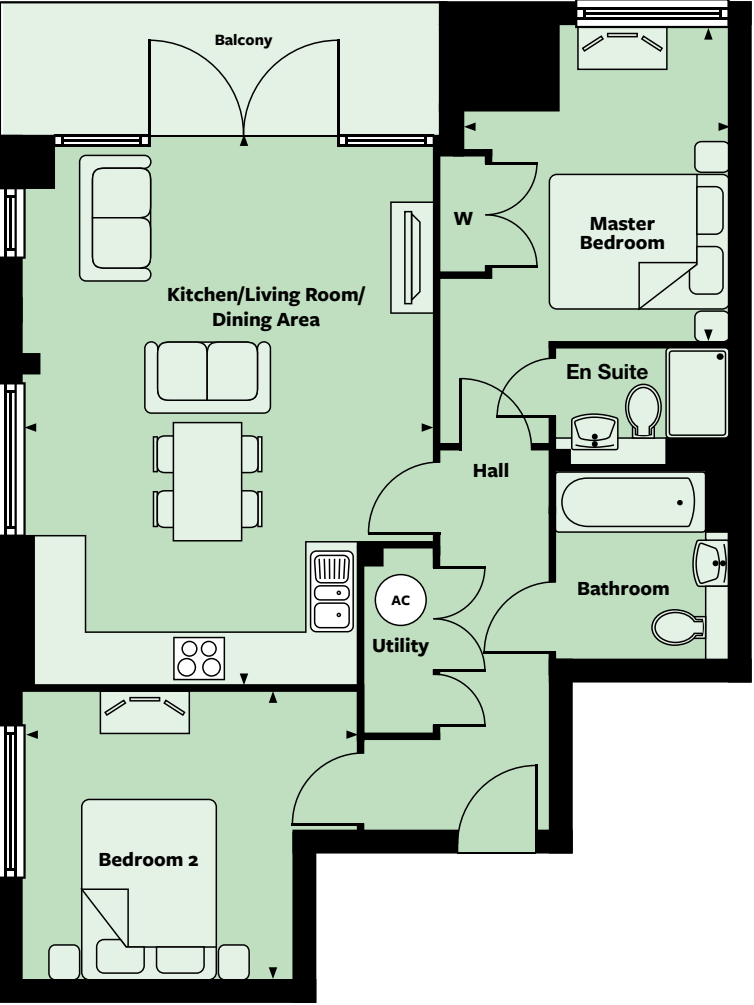
TYPE K+ 2 BEDROOM

APARTMENTS
8, 12, 16, 20, 24 & 28

Kitchen/Living Room/Dining Area	
6.25m x 4.80m	20'6" x 15'9"
Master Bedroom	
3.74m x 3.44m	12'3" x 11'3"
Bedroom 2	
3.42m x 3.20m	11'3" x 10'5"
Total Gross Internal Floor Area	
70.8sq m	762sq ft



	1ST FLOOR
APARTMENT 8	2ND FLOOR
APARTMENT 12	3RD FLOOR
APARTMENT 16	4TH FLOOR
APARTMENT 20	5TH FLOOR
APARTMENT 24	6TH FLOOR
APARTMENT 28	7TH FLOOR

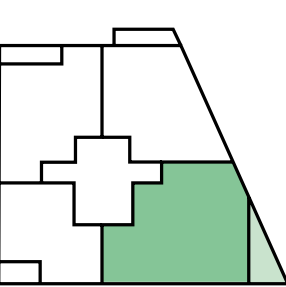


+This apartment has a flue in the master bedroom.

TYPE H 3 BEDROOM

APARTMENTS
2, 6, 10, 14, 18, 22 & 26

Kitchen/Living Room/Dining Area	
6.58m x 5.60m	21'7" x 18'4"
Master Bedroom	
4.90m x 2.89m	16'1" x 9'6"
Bedroom 2	
3.51m x 3.40m	11'6" x 11'2"
Bedroom 3	
4.51m x 3.46m	14'10" x 11'4"
Total Gross Internal Floor Area	
96.5sq m	1039sq ft



APARTMENT 2	1ST FLOOR
APARTMENT 6	2ND FLOOR
APARTMENT 10	3RD FLOOR
APARTMENT 14	4TH FLOOR
APARTMENT 18	5TH FLOOR
APARTMENT 22	6TH FLOOR
APARTMENT 26	7TH FLOOR

Balcony



Please note: The regeneration of the railway arches is being undertaken by others, and may differ from what is shown in the computer generated image.





The image shows a contemporary living room. On the left, a white sofa is adorned with several cushions in shades of blue, yellow, and dark blue. Behind the sofa is a large, ornate mirror reflecting a window. The wall behind the mirror has a dark, textured, shimmering wallpaper. To the right of the sofa is a small side table with a lamp. In the foreground, a dark wooden coffee table holds a stack of books and a large, dark blue glass vase. In the background, a kitchen with dark cabinetry and a white countertop is visible. The ceiling is white with recessed lighting.

THE PLAYLIST

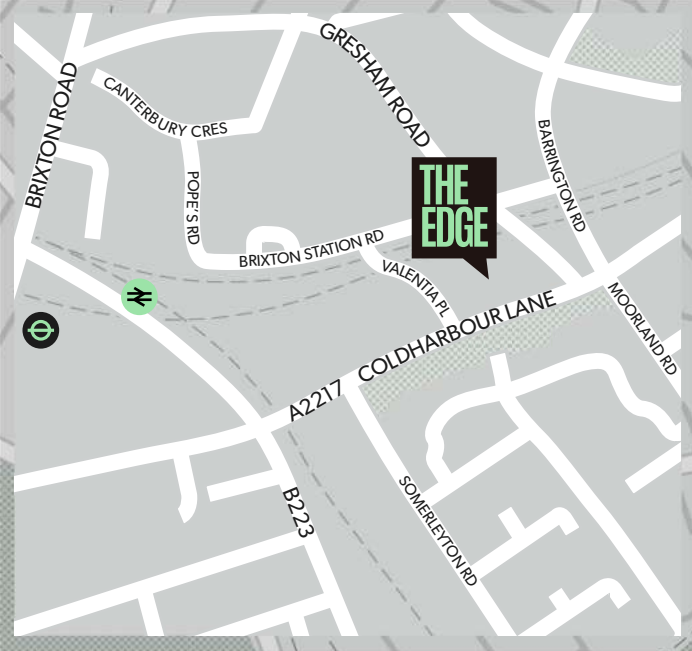
BRIXTON

THE EDGE
GRESHAM ROAD, BRIXTON
LONDON SW9 7NP



BRIXTON

THE
EDGE



020 3897 4818
THE-EDGEBRIXTON.CO.UK

**Taylor
Wimpey**

Taylor Wimpey South Thames

A division of Taylor Wimpey UK Ltd, Thornetts House, Challenge Court, Barnett Wood Lane, Leatherhead, KT22 7DE

BLOCK
B
APARTMENTS

THE EDGE

BRIXTON
FT. Taylor
Wimpey

B IS FOR

BELIEF

FEATURING 1, 2 & 3 BEDROOM APARTMENTS

EACH WITH A BALCONY OR TERRACE.

A UNIQUE PLACE TO LIVE? YOU BETTER BELIEVE IT.



IT'S ALL IN THE DETAIL.

KITCHENS

Superb designer kitchens with integrated appliances – electric oven, hob, extractor, fridge/freezer – and your choice of worktops and kitchen units.*

BATHROOMS/EN SUITES

Sparkling white sanitaryware with chrome fittings, thermostatic shower and glass shower screen, plus your choice of coloured ceramic tiles.*

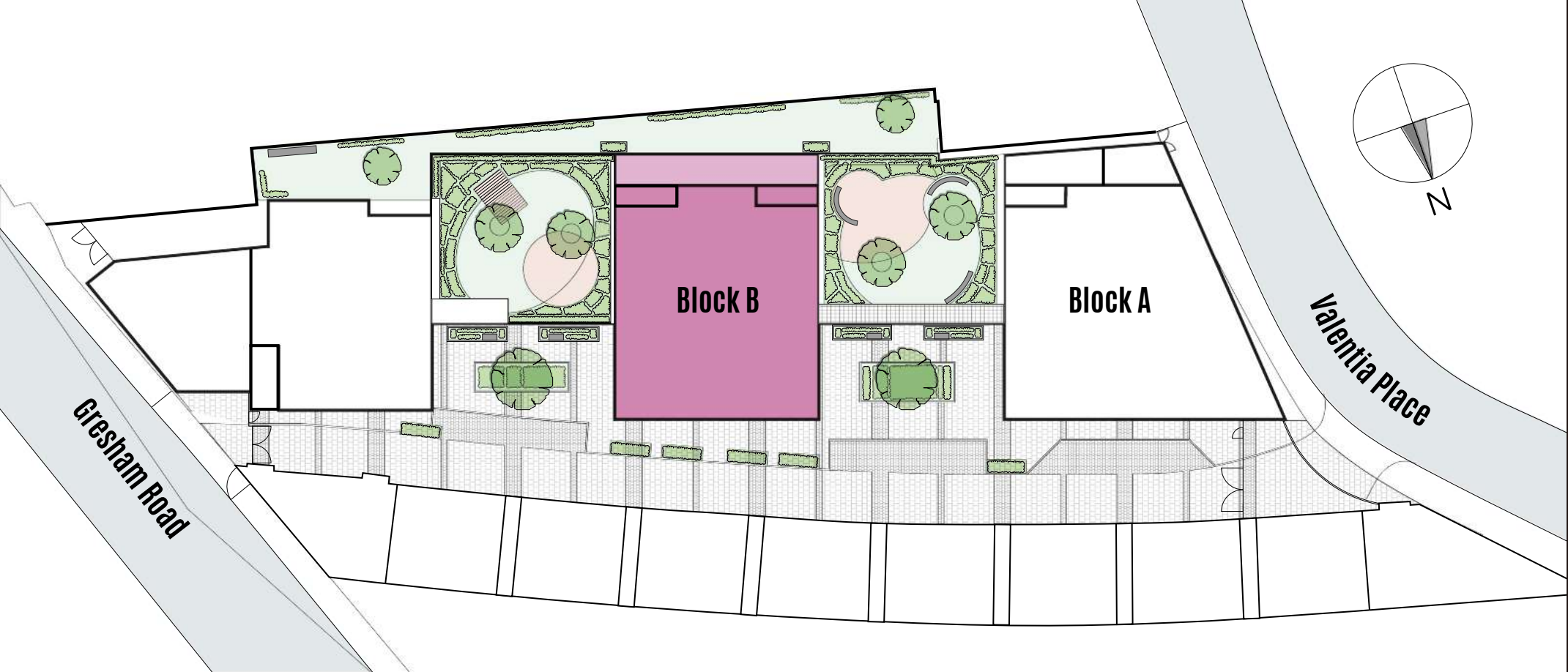
ELECTRICS

TV/SAT/DAB/FM point in living room, TV points in all bedrooms, landline point, LED downlighters, shaver points, heated towel rails – the list goes on.

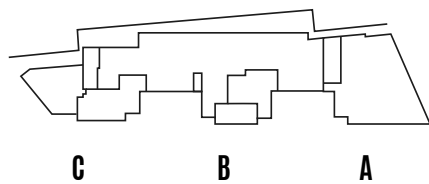
GENERAL

Walls, ceilings and woodwork painted white, video door entry system, acoustically enhanced double glazing – ask about further options available.

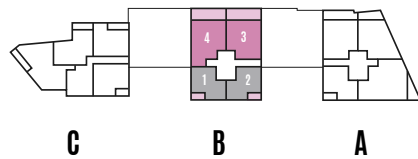
*Choices from our selected range, available subject to stage of construction.



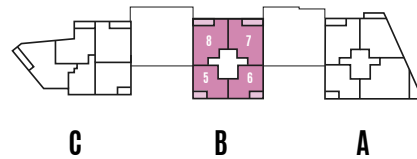
GROUND FLOOR



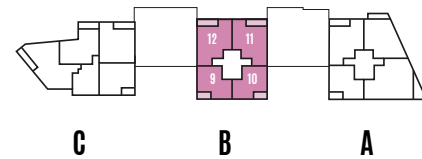
FIRST FLOOR



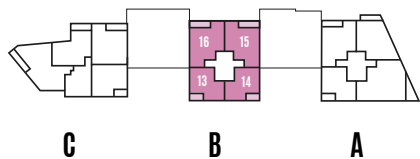
SECOND FLOOR



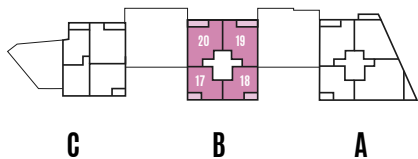
THIRD FLOOR



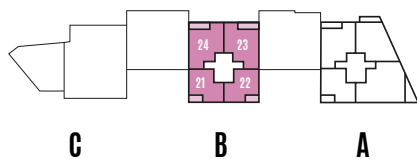
FOURTH FLOOR



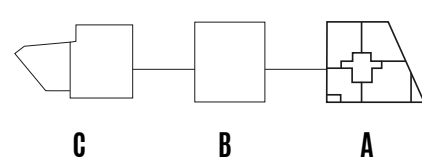
FIFTH FLOOR



SIXTH FLOOR



SEVENTH FLOOR



 Housing Association

Floor plan disclaimer

The floor plans depict a typical layout of this house type. For exact plot specification, details of external and internal finishes, dimensions and floor plan differences consult your Sales Executive. The internal overall floor area quoted is measured to the unfinished blockwork – this is referred to as the gross internal floor area (GIA). The individual room dimensions are measured to the face of the plasterwork – this is referred to as the net internal floor area. All dimensions are + or - 50mm and floor plans are not shown to scale.

Site plan disclaimer

The Development Layout does not show details of gradients of land, boundary treatments, local authority street lighting or landscaping. It is our intention to build in accordance with this layout. However, there may be occasions when the house designs, boundaries, landscaping and positions of roads and footpaths change as the development proceeds. Please check the details of your chosen property with your Sales Executive prior to reservation.

CGI disclaimer

The images in this brochure are from an imaginary viewpoint within an open space area. Their purpose is to give a feel for the development, not an accurate description of each property. The illustration shows a typical Taylor Wimpey home of this type, but there are, however, variances from site to site. External materials, finishes, landscaping, (where provided) may vary throughout the development. Properties may also be built handed (mirror image). Please enquire for further details.



Please note: The regeneration of the railway arches is being undertaken by others, and may differ from what is shown in the computer generated image.

LIFE IS GOOD,
NOW MAKE A PLAN.

FLOOR PLANS ...

TYPE E

1 BEDROOM

APARTMENTS
5, 6, 9, 10, 13, 14, 17, 18, 21 & 22

Kitchen/Living Room/Dining Area

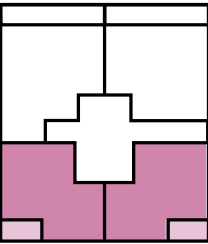
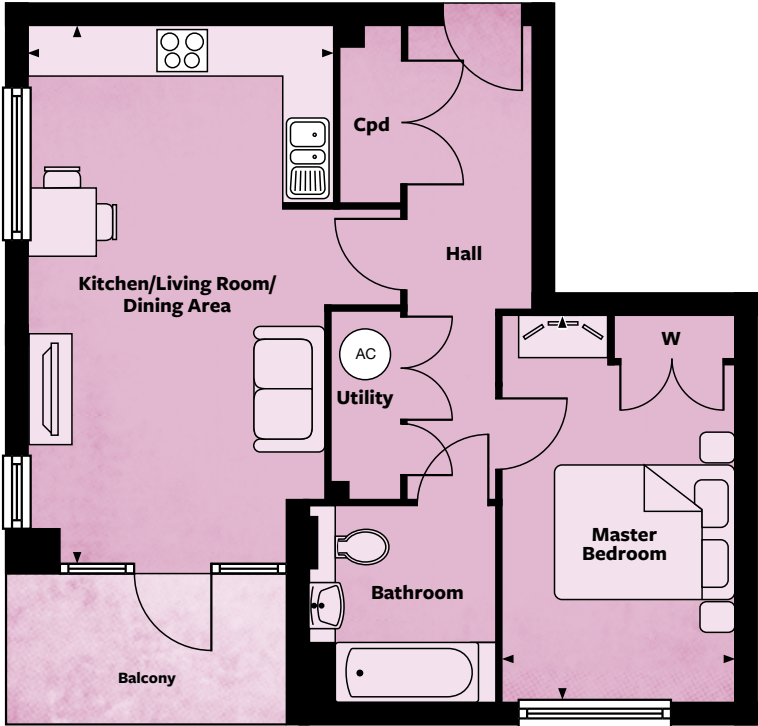
6.32m x 3.48m 20'9" x 11'5"

Master Bedroom

4.50m x 2.75m 14'9" x 9'0"

Total Gross Internal Floor Area

51.9sq m 559sq ft



	1ST FLOOR
APARTMENTS 5 & 6	2ND FLOOR
APARTMENTS 9 & 10	3RD FLOOR
APARTMENTS 13 & 14	4TH FLOOR
APARTMENTS 17 & 18	5TH FLOOR
APARTMENTS 21 & 22	6TH FLOOR

Apartments 6, 10, 14, 18 & 22 are handed.

TYPE F

2 BEDROOM

APARTMENT
3

Kitchen/Living Room/Dining Area

6.32m x 4.83m 20'9" x 15'10"

Master Bedroom

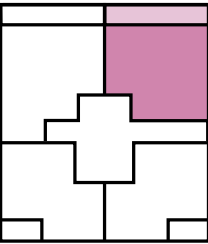
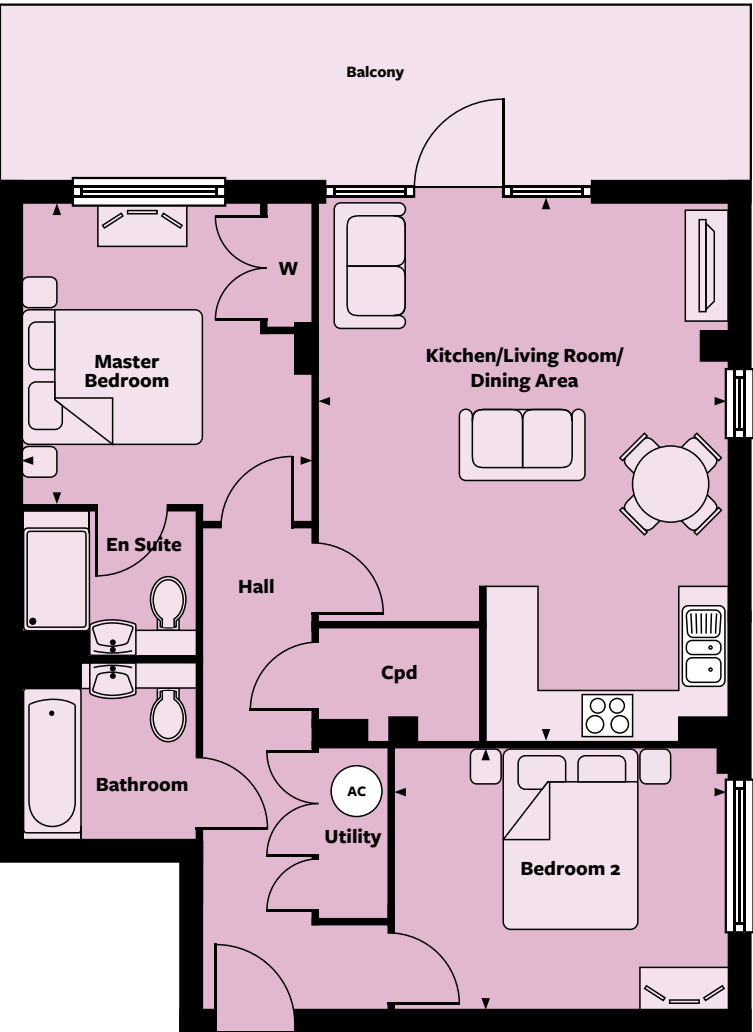
3.53m x 3.42m 11'7" x 11'3"

Bedroom 2

3.93m x 3.09m 12'11" x 10'2"

Total Gross Internal Floor Area

74.2sq m 799sq ft

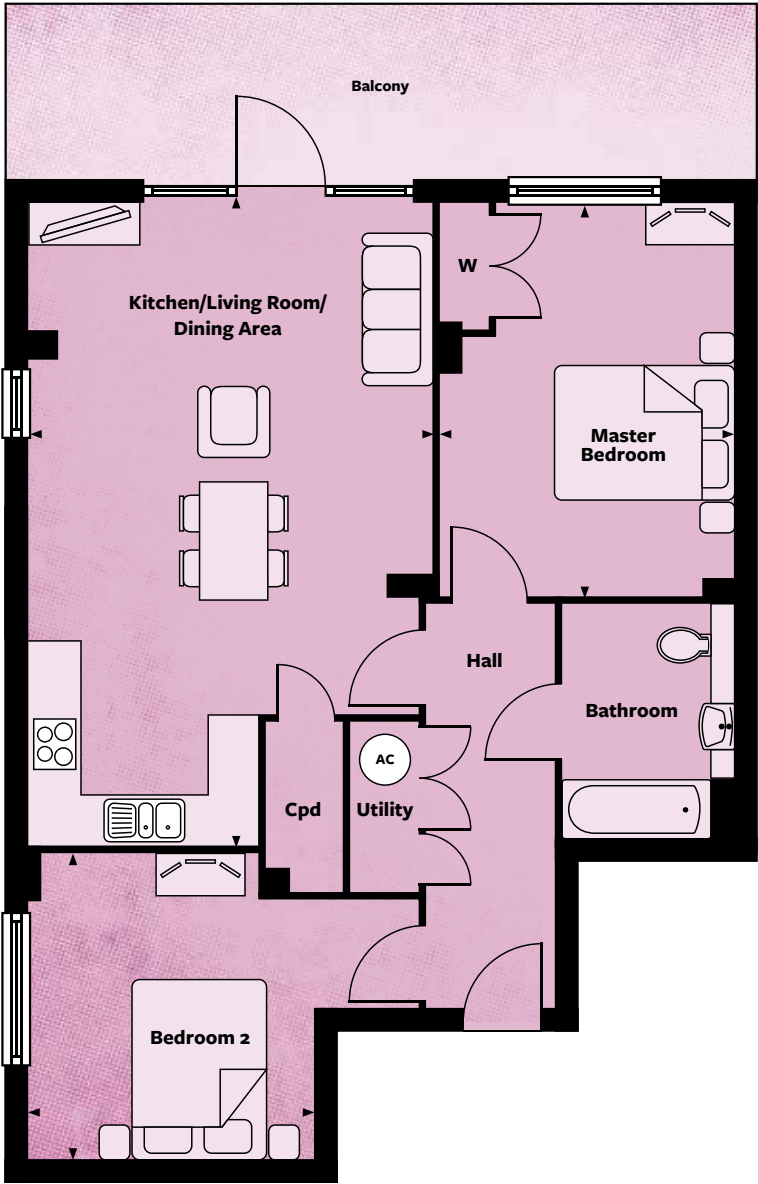
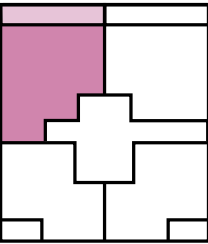


APARTMENT 3	1ST FLOOR
	2ND FLOOR
	3RD FLOOR
	4TH FLOOR
	5TH FLOOR
	6TH FLOOR

TYPE G 2 BEDROOM

APARTMENT 4

Kitchen/Living Room/Dining Area		
7.57m x 4.75m	24'10" x 15'7"	
Master Bedroom		
4.62m x 3.49m	15'2" x 11'5"	
Bedroom 2		
3.60m x 3.38m	11'10" x 11'1"	
Total Gross Internal Floor Area		
79.9sq m	860sq ft	

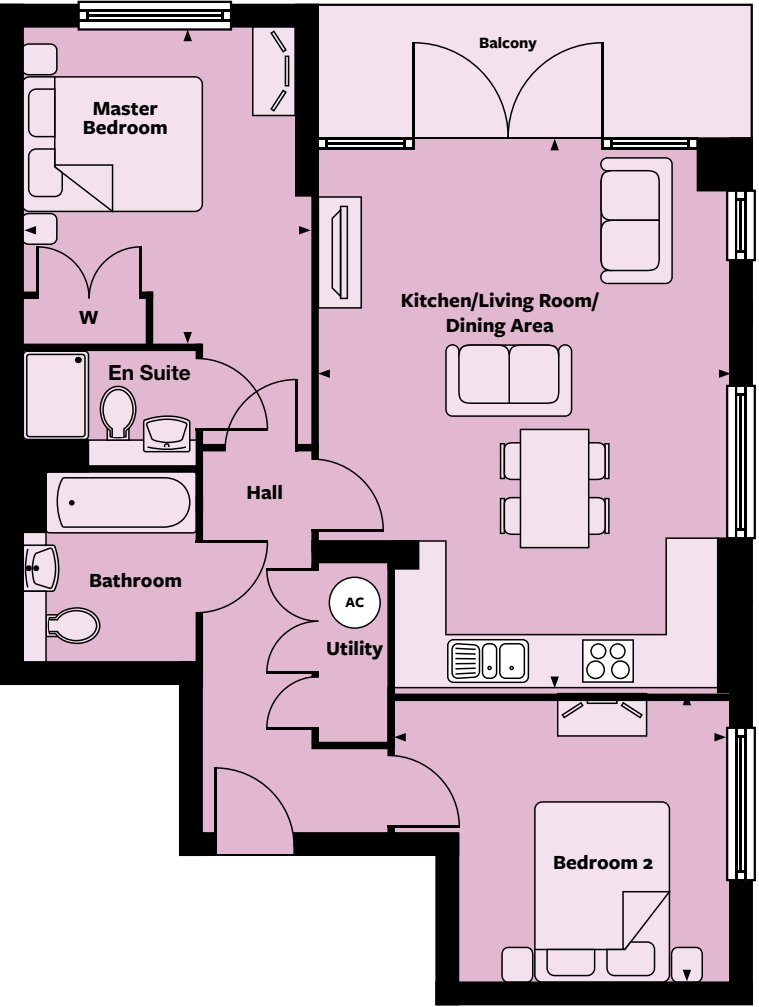
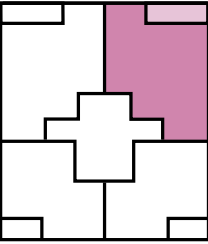


APARTMENT 4	1ST FLOOR
	2ND FLOOR
	3RD FLOOR
	4TH FLOOR
	5TH FLOOR
	6TH FLOOR

TYPE K 2 BEDROOM

APARTMENTS 7, 11, 12, 15, 16, 19, 20, 23 & 24

Kitchen/Living Room/Dining Area		
6.25m x 4.83m	20'6" x 15'10"	
Master Bedroom		
3.72m x 3.41m	12'2" x 11'2"	
Bedroom 2		
3.94m x 3.42m	12'11" x 11'3"	
Total Gross Internal Floor Area		
71.8sq m	773sq ft	



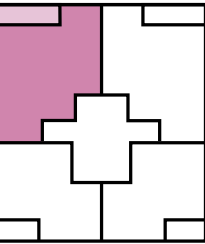
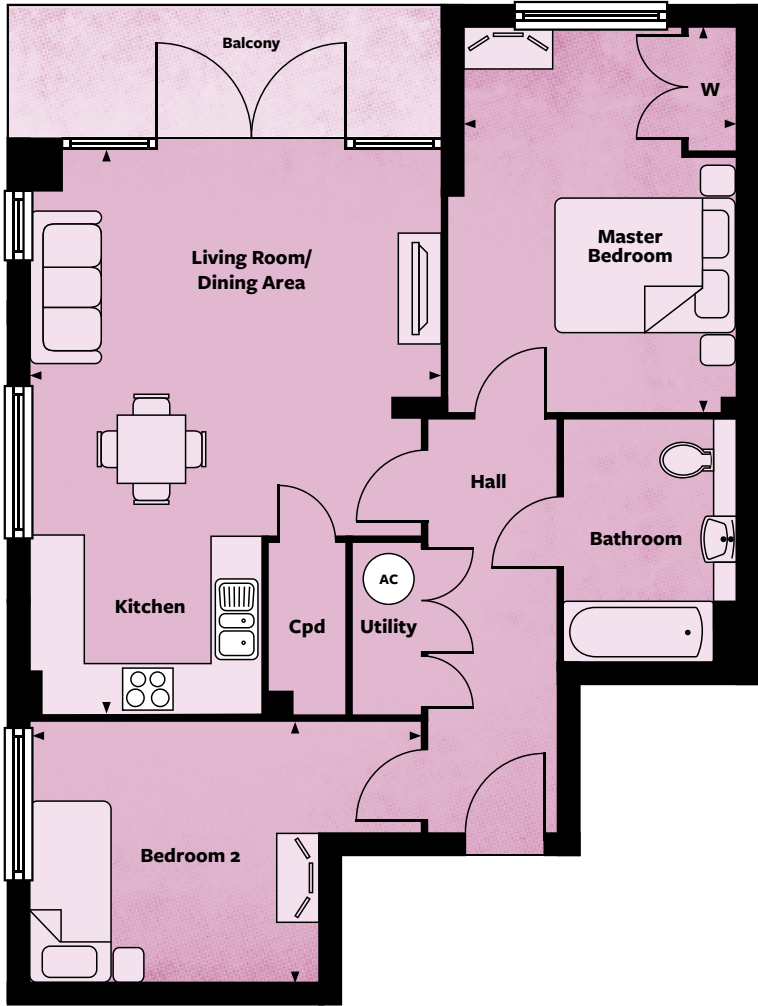
	1ST FLOOR
APARTMENT 7	2ND FLOOR
APARTMENTS 11 & 12	3RD FLOOR
APARTMENTS 15 & 16	4TH FLOOR
APARTMENTS 19 & 20	5TH FLOOR
APARTMENTS 23 & 24	6TH FLOOR

Apartments 12, 16, 20 & 24 are handed.

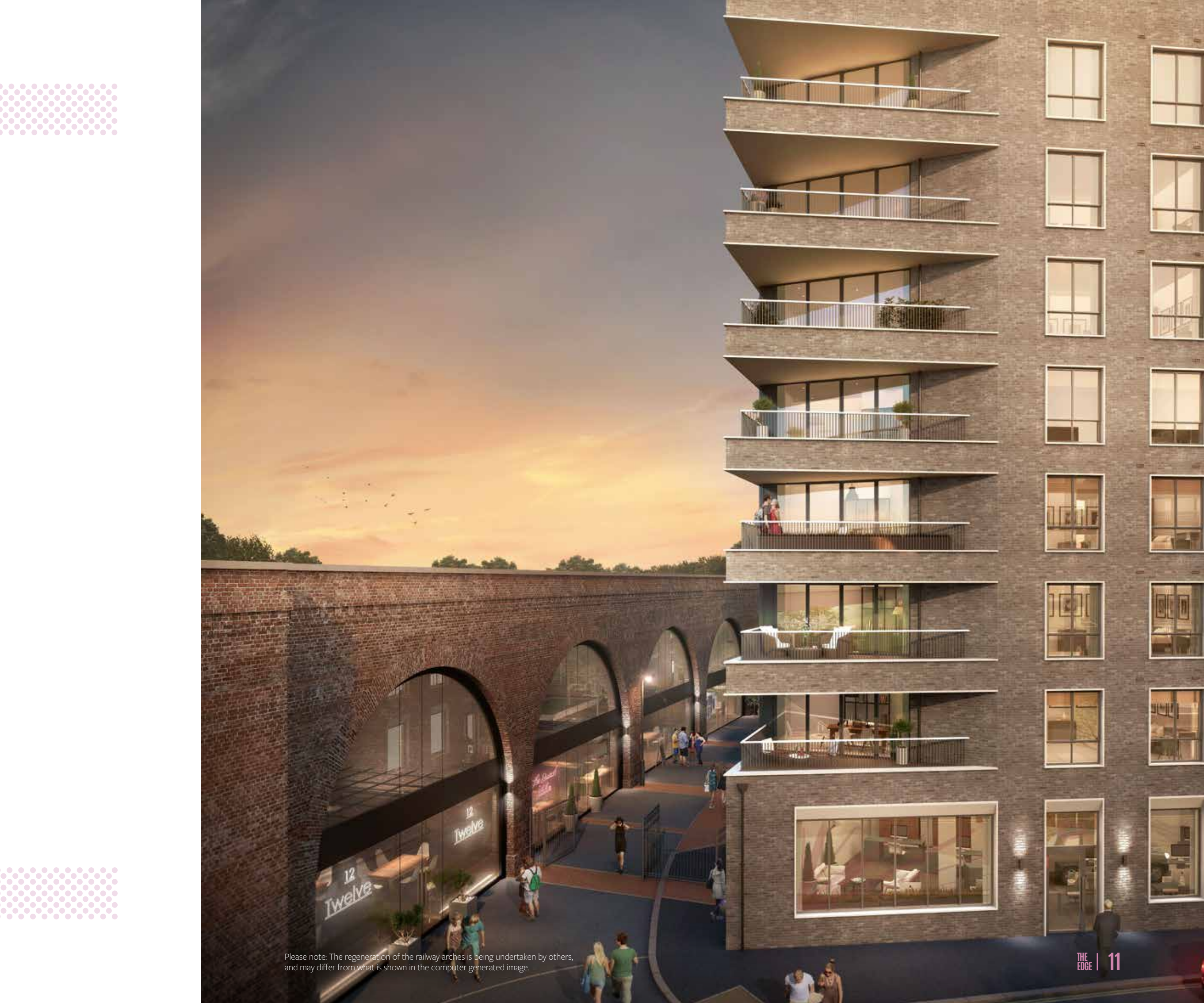
TYPE M 2 BEDROOM

APARTMENT 8

Kitchen/Living Room/Dining Area	
6.61m x 4.83m	21'8" x 15'10"
Master Bedroom	
4.55m x 3.42m	14'11" x 11'3"
Bedroom 2	
3.39m x 3.06m	11'1" x 10'0"
Total Gross Internal Floor Area	
72.2sq m	777sq ft



1ST FLOOR	2ND FLOOR
APARTMENT 8	
3RD FLOOR	
4TH FLOOR	
5TH FLOOR	
6TH FLOOR	



Please note: The regeneration of the railway arches is being undertaken by others, and may differ from what is shown in the computer generated image.





THE

PLAYLIST

BRIXTON

THE EDGE
GRESHAM ROAD, BRIXTON
LONDON SW9 7NP



CAMBERWELL

STOCKWELL



LOUGHBOROUGH ROAD

AKERNMAN ROAD

BRIXTON ROAD

LOUGHBOROUGH ROAD

A2217 COLDHARBOUR LANE

King's College Hospital ★

RUSKIN PARK

LOUGHBOROUGH JUNCTION

THE EDGE

BRIXTON



BRIXTON

Brixton Market ★

A2217 COLDHARBOUR LANE

BRIXTON

Electric Brixton ★

A2217 ACRE LANE

A204

B223 RAILTON ROAD

BRIXTON HILL

DULWICH ROAD

★ Brixton Windmill



BROCKWELL PARK

020 3897 4818
THE-EDGEBRIXTON.CO.UK

**Taylor
Wimpey**

Taylor Wimpey South Thames

A division of Taylor Wimpey UK Ltd, Thornetts House, Challenge Court, Barnett Wood Lane, Leatherhead, KT22 7DE