



Esher

£4,500,000

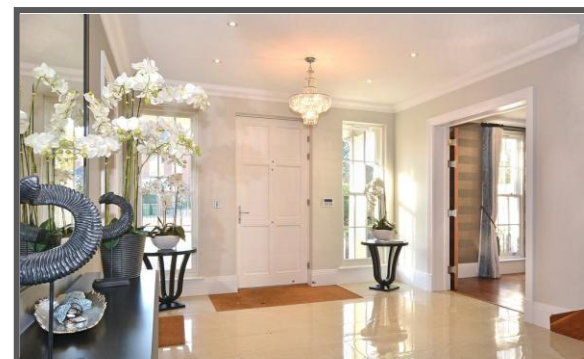
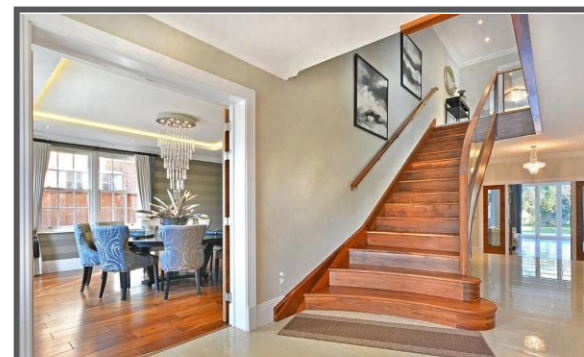
Esher

A truly stunning detached family home set down one of Esher's most prestigious roads and within a short distance to Esher railway station and high street amenities. An imposing figure and one of the finest properties currently on the market, the property offers a stylish and contemporary living with SIX double rooms, SIX bathrooms, FIVE reception rooms, cinema/games room, double garage, and underfloor heating throughout.

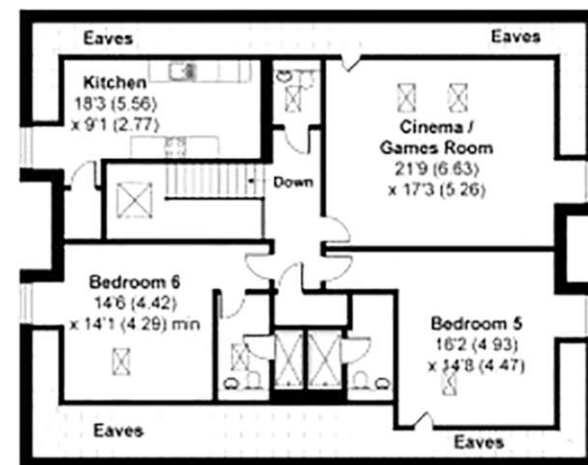
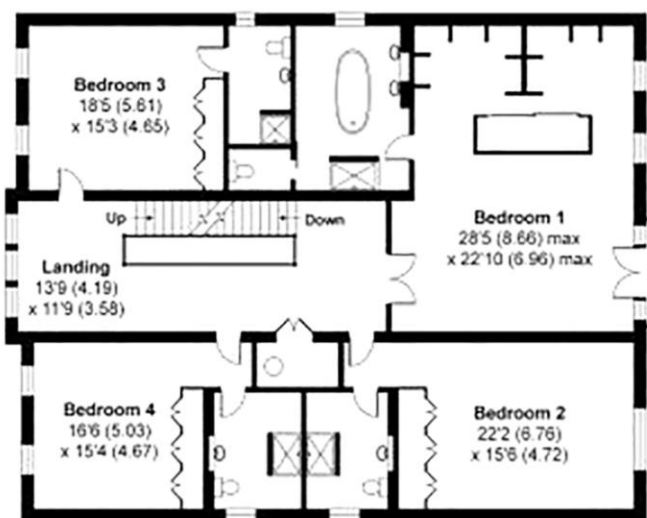
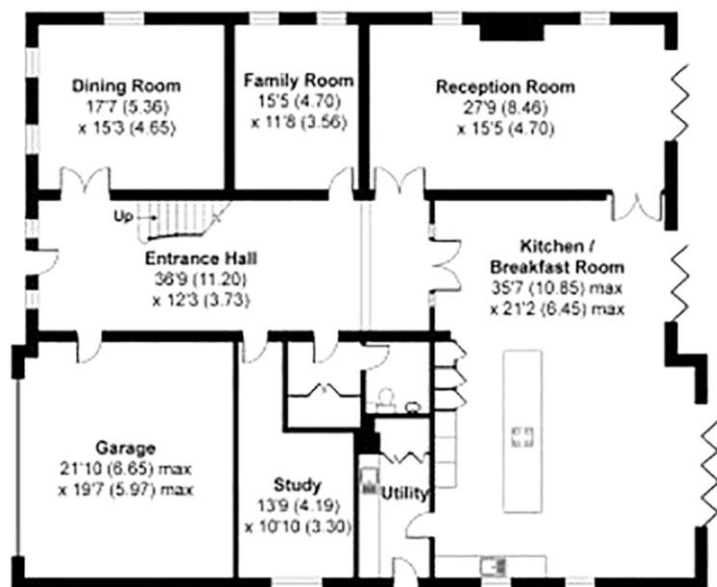
Set over three floors, extra benefits of this family home include, CCTV, night kitchen, gated entrance and a well maintained private rear garden.

Local schooling in the area is fantastic with the Claremont Fan Court School nearby, Esher Church School, the ACS Cobham International School, Danes Hill in Oxshott and Notre Dame in Cobham.

- Six Bedrooms
- Five Reception Rooms
- Six Bathrooms
- Gated Entrance
- Private Road
- Secluded Garden
- EPC Rating - B
- Council Tax Banding - H



Floor Plan



GROUND FLOOR

FIRST FLOOR

SECOND FLOOR

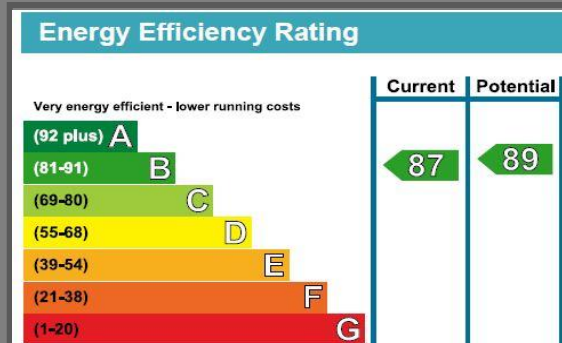
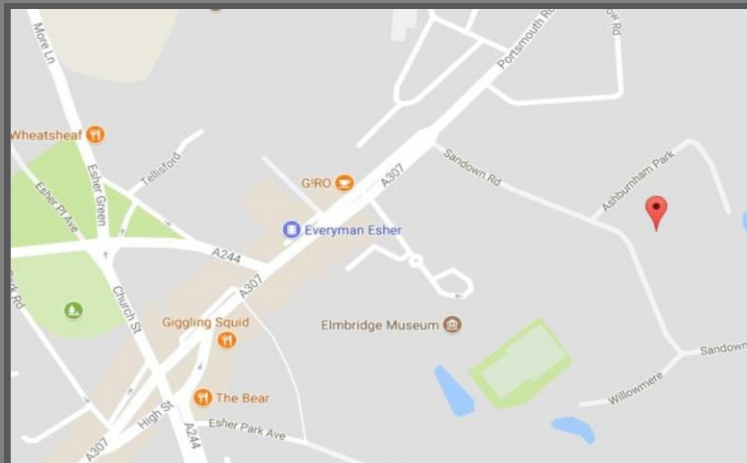


APPROX. GROSS INTERNAL FLOOR AREA 7233 SQ FT 671.9 SQ METRES (EXCLUDES RESTRICTED HEAD HEIGHT & INCLUDES GARAGE)

Whilst every attempt has been made to ensure the accuracy of the floor plan contained here, measurements of doors, windows and rooms are approximate and no responsibility is taken for any error, omission or misstatement. These plans are for representation purposes only as defined by RICS Code of Measuring Practice and should be used as such by any prospective purchaser. Specifically no guarantee is given on the total square footage of the property if quoted on this plan. Any figure given is for initial guidance only and should not be relied on as a basis of valuation.

Location

From our office, take a right and head down the Portsmouth Road for 200 Yards. Turn right into Sandown Road and the property is situated on the left-hand side.



We aim to make our particulars both accurate and reliable but they are not guaranteed, nor do they form part of an offer or contract.

If you require clarification of any points then please contact us especially if you are travelling some distance to view.

Please note that appliances and heating systems have not been tested and therefore no warranties can be given as to their good working order.