

QUEEN'S WHARF, LONDON W6

£2,850,000

ASKING PRICE OF



NEW
PROPERTY



This beautifully furnished new build apartment has been finished to the highest specification. Benefitting from three large double bedrooms, two of which are en-suite and contain built-in wardrobes. Another bathroom for shared use branches off the hall way alongside a utility room and cloak room. The property is unique in its spatial configuration and aspect. The open-plan living, and dining layout ensures flow and flexibility of space, while maximizing views out and natural light in addition to a fully fitted Miele kitchen. Views from all three bedrooms include the tranquil River Thames and Hammersmith Bridge.

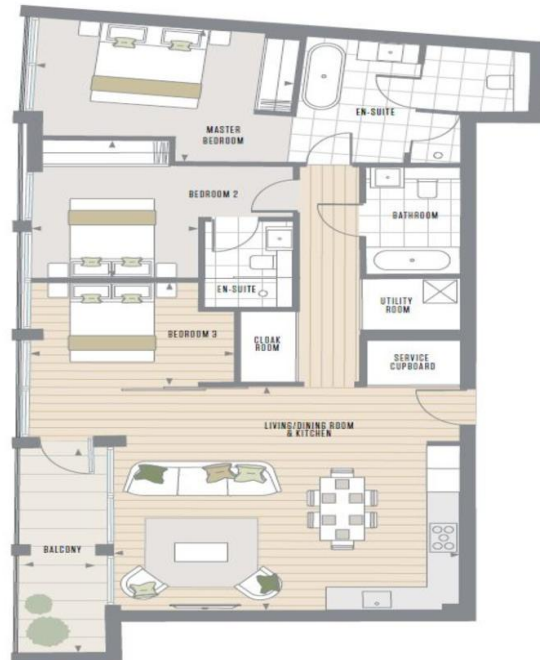
Residents will enjoy the benefits of a landscaped roof terrace which overlooks the river and podium gardens spread over three levels. The Thames pathway leads to a welcoming residents-only reception, with a fireplace and cosy seating area, manned by a dedicated 24-hour concierge team. Furthermore, the ground level holds a café, restaurant and bar and a section for secure bicycle storage. An independent theatre and cinema sits at lower ground level managed by the world-famous Riverside Studios.





WHAT ELSE...

- Three large bedrooms
- Three bathrooms, two of which en-suite
- Open plan living, dining and kitchen layout with Miele appliances
- Beautifully furnished
- Oak flooring
- Secure gated parking
- Landscaped roof terrace for residents
- 24-hour concierge
- Balcony with river views
- Easy access to transport links
- Energy Efficiency Rating TBC.



44 Crawford Street, London W1H 1JS | +44 (0)207 723 8082

If you are looking to sell or rent your property, would like a current market appraisal or just want to keep up to date with property news in your local area...

Call us on 0207 723 8082 or email info@keypropertylondon.com

44 Crawford Street, London W1H 1JS | www.keypropertylondon.com

