

**Asking Price Of £6,950,000**

**EPC Rating: TBC**

Full EPC Certificate available upon request







## Property Description

Arguably one of the best portered buildings in Mayfair  
This fifth floor flat, situated within this impressive apartment block (with lift) comprises 4/5 bedrooms, 4 shower rooms, reception room, dining room and kitchen. There is secure 24 hour portage together with CCTV security.

Fountain House is situated in the heart of Mayfair on Park Street with westerly views over Hyde Park central to Mayfair, Knightsbridge and Piccadilly.









## Fountain House, W1K

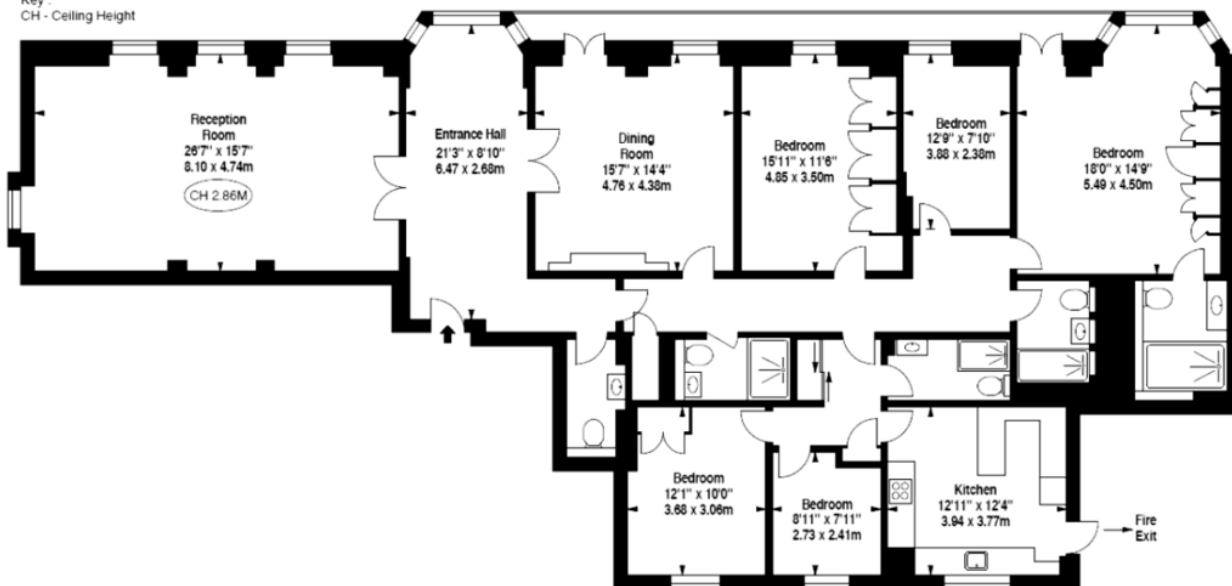
APPROX. GROSS INTERNAL AREA \*

2268 Ft<sup>2</sup> • 210.77 M<sup>2</sup>



This floorplan is for GUIDANCE ONLY and NOT FOR VALUATION purposes.

Key:  
CH - Ceiling Height



FIFTH FLOOR

Agents Note: Whilst every care has been taken to prepare these sales particulars, they are for guidance purposes only. All measurements are approximate and for general guidance purposes only and whilst every care has been taken to ensure their accuracy, they should not be relied upon and potential buyers are advised to recheck the measurements.

52 Berkeley Square  
London  
W1J 5BT

[www.eleganthomeslondon.com](http://www.eleganthomeslondon.com)  
[info@eleganthomeslondon.co.uk](mailto:info@eleganthomeslondon.co.uk)  
0207 123 5152

