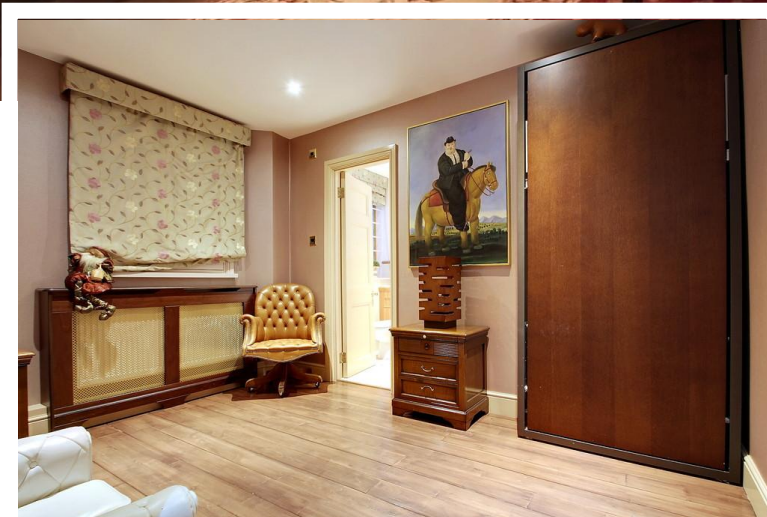
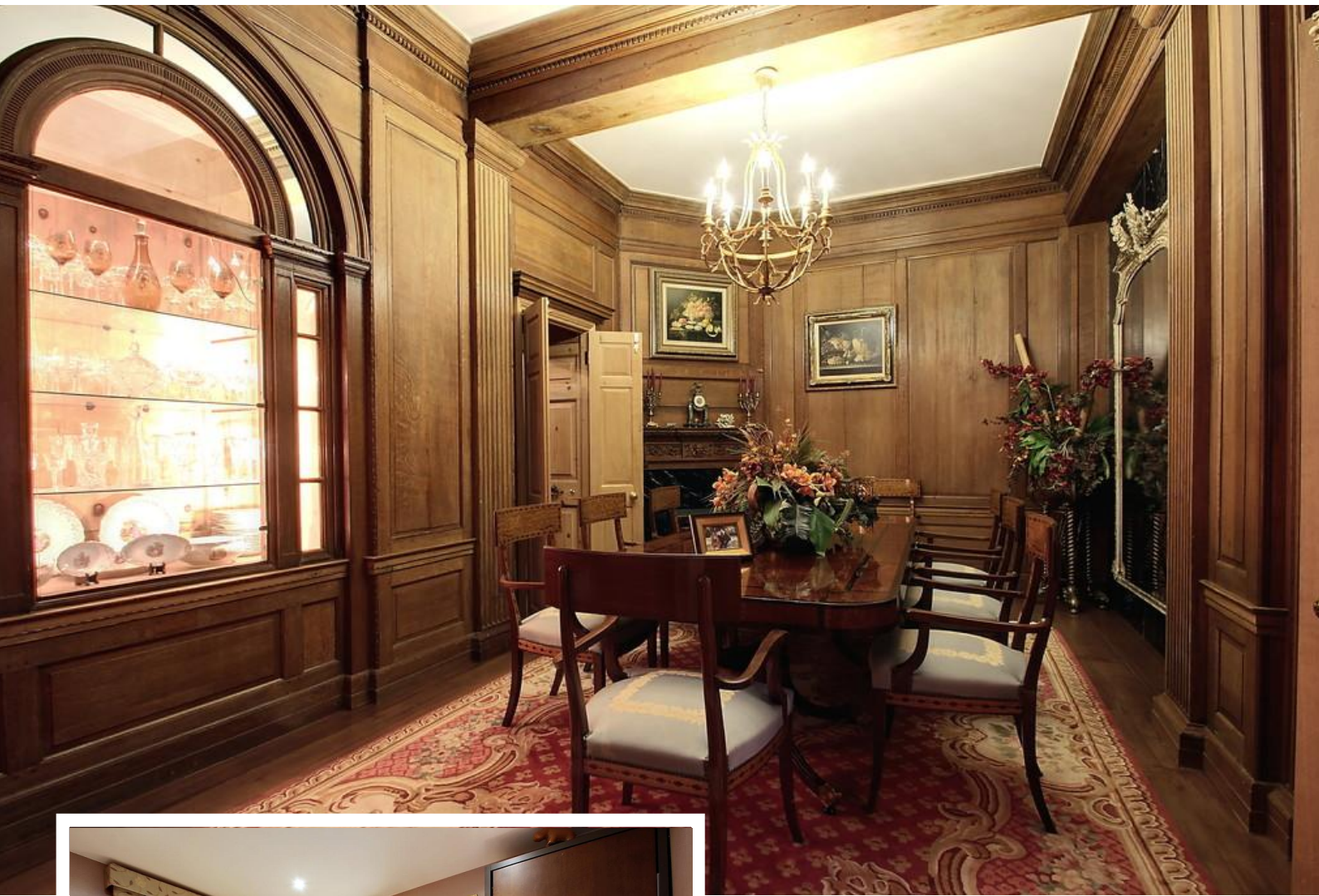


Asking Price Of £7,695,000

EPC Rating: TBC
Full EPC Certificate available upon request





Property Description

A spectacular interior designed spacious apartment for sale in Chiltern House W2, located on the sought after Baker Street moments from Bakerloo and Marylebone station.

Occupying 5000sqft approx, this magnificent apartment has traditional decor throughout with wall to ceiling windows, carved wood panels to create majestic living.

The property comprises 3/4 reception rooms, 6/7 bedrooms, kitchen/diner, 2 bathrooms, 4 shower rooms, access to separate studio flat with shower room and fitted kitchen currently being used as maids quarters.

Chiltern House is ideally positioned, close to the fashionable cafes, Sherlock Holmes museum, Madam Tussauds and numerous restaurants. Local transport links include Marylebone station, Bakerloo and Edgware Road.



CHILTERN COURT, BAKER STREET
LONDON W1



FIRST FLOOR FLAT

APPROX. GROSS INTERNAL FLOOR AREA 4854.52 SQ. FT / 451.00 SQ. M

WHILST EVERY ATTEMPT HAS BEEN MADE TO ENSURE THE ACCURACY OF THE FLOOR PLAN CONTAINED HERE, MEASUREMENTS OF DOORS, WINDOWS, ROOMS AND ANY OTHER ITEMS ARE APPROXIMATE AND NO RESPONSIBILITY IS TAKEN FOR ANY ERROR, OMISSION, OR MIS-STATEMENT. THIS PLAN IS FOR ILLUSTRATIVE PURPOSES ONLY AND SHOULD BE USED AS SUCH, BY ANY PROSPECTIVE PURCHASER.

Agents Note: Whilst every care has been taken to prepare these sales particulars, they are for guidance purposes only. All measurements are approximate and for general guidance purposes only and whilst every care has been taken to ensure their accuracy, they should not be relied upon and potential buyers are advised to recheck the measurements

52 Berkeley Square
London
W1J 5BT

www.elegantlondon.com
info@elegantlondon.co.uk
0207 123 5152

