

# SUMMERWINDS

---

GOLF CLUB ROAD  
ST. GEORGE'S HILL  
WEYBRIDGE, SURREY  
KT13 0NN



---

STONEHAVEN  
GROUP



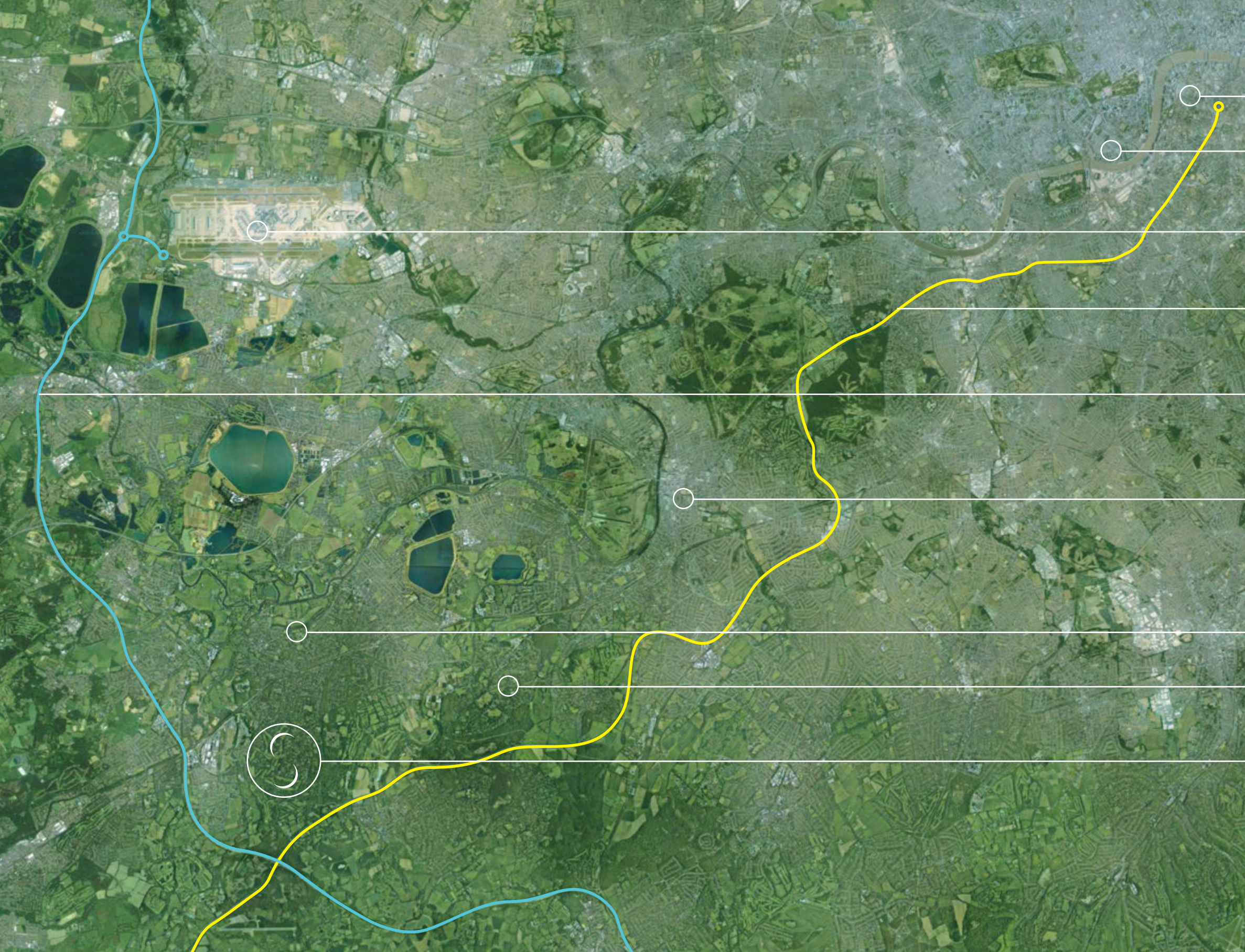
# St. George's Hill

is regarded as one of the most desirable country addresses within close proximity to London. Favoured by some of the world's most successful families as the perfect place to relax and unwind, properties in the Estate represent an exclusive opportunity to those seeking a superior standard of living.

A distinctive and unique location designed for driven, motivated and successful high achievers who are looking for a secure and private location in understated and tranquil surroundings, the Hill is a place that provides an escape from the busy lives of its discerning residents.







Central London

Chelsea

Heathrow

The A3

The M25

Kingston upon Thames

Weybridge

Esher

Summerwinds

Golf Club Road,  
St. George's Hill



# Golf

Designed by Harry Colt in 1912 and carved out of heather and pine woodland, the St. George's Hill Golf Club offers a premium 18-hole experience, with a beautifully landscaped course and superb clubhouse facilities.

Combining any two of the nine hole courses provides a challenging, scenic and, above all, hugely enjoyable round of golf. Playing all three will undoubtedly prove truly memorable.



St. George's Hill Golf Club



# Fitness

Originally established in 1913, the quintessentially English St. George's Hill Lawn Tennis Club provides lawn, indoor and outdoor tennis, squash courts, a heated indoor swimming pool and state-of-the-art health and fitness facilities along with a boutique spa.



St. George's Hill Tennis Club



**Lifestyle** The charming towns of Weybridge, Cobham and Esher can be reached within a few minutes' drive, offering sophisticated cafes, gastropubs and Michelin-starred restaurants. If shopping is on the agenda, the boutique stores of historic Kingston upon Thames and Guildford are certain to appeal, or the shops and galleries on the fabulous King's Road in Chelsea lie only half an hour's drive away.



The Good Earth, Esher



**Schooling** Surrey education has a track record of excellence. Many good Prep and Senior schools lie within surrounding Weybridge, Cobham and Esher. Internationally-renowned boarding schools such as Eton, Charterhouse and Wellington schools are a short drive away, offering superb educational prospects; premier London universities are all within an hour's drive.



Charterhouse School



Welcome to  
Summerwinds





Discover a mansion amongst the trees, set in the heart of St. George's Hill. Approaching an acre and a half of private grounds in which to relax and reflect awaits you.

Exquisite gardens, complemented with a water fountain feature, classic temple, various seating areas, impressive driveway entrance, superbly screened all year round, some wilderness and a mature tree setting.

Discover Summerwinds, a bastion of idyllic British luxury.











Old Avenue

Golf Club Road

Summerwinds

St. George's Hill Golf Club







Enter and be invited into a grand expanse; a symphony of carefully designed lines and harmonious curves, of feature staircases and soaring ceilings, considered down to the smallest of details and the most thorough of finishes.









Relax in room after room of impeccably  
conceived interior design, crafted  
to exceed your every expectation.  
You'll want to lounge a little  
longer, and take the time to  
appreciate it all fully.









Prepare to be impressed. A stunning handmade kitchen replete with Lacanche and Miele appliances meets a sweeping dining area, sure to give your eyes as much of a treat as your tastebuds. A contemporary open-plan arrangement, giving you more time spent with the things that matter most: good food, and good company, complete with view of the swimming pool and leisure complex area.







## Entertainment Suite





Indulge your every whim without ever setting foot outside your front door. With a sumptuous and stylish bespoke entertainment suite at your disposal, incorporating wine store, bar, large cinema area and mirrored dancefloor. Staying in really is the new going out.









Stimulate your senses and hone your physique in a fully appointed gym and spa with sauna, alongside hot tub and indoor pool, all at ground level.

Your health and fitness is now entirely at your convenience.







## Master Bedroom Suite

**Awaken** in one of Summerwinds' six superbly fitted bedroom suites, having enjoyed the perfect restorative experience to prepare you for the day. Come evening, a glass of champagne on the balcony or curl up by the fireside.







Unwind in the peaceful refuge of one of Summerwinds' beautiful bathroom suites, painstakingly appointed to an immaculately high standard and each offering a therapeutic escape. Hand-selected Venetian marble and fittings installed by traditional craftsmen.





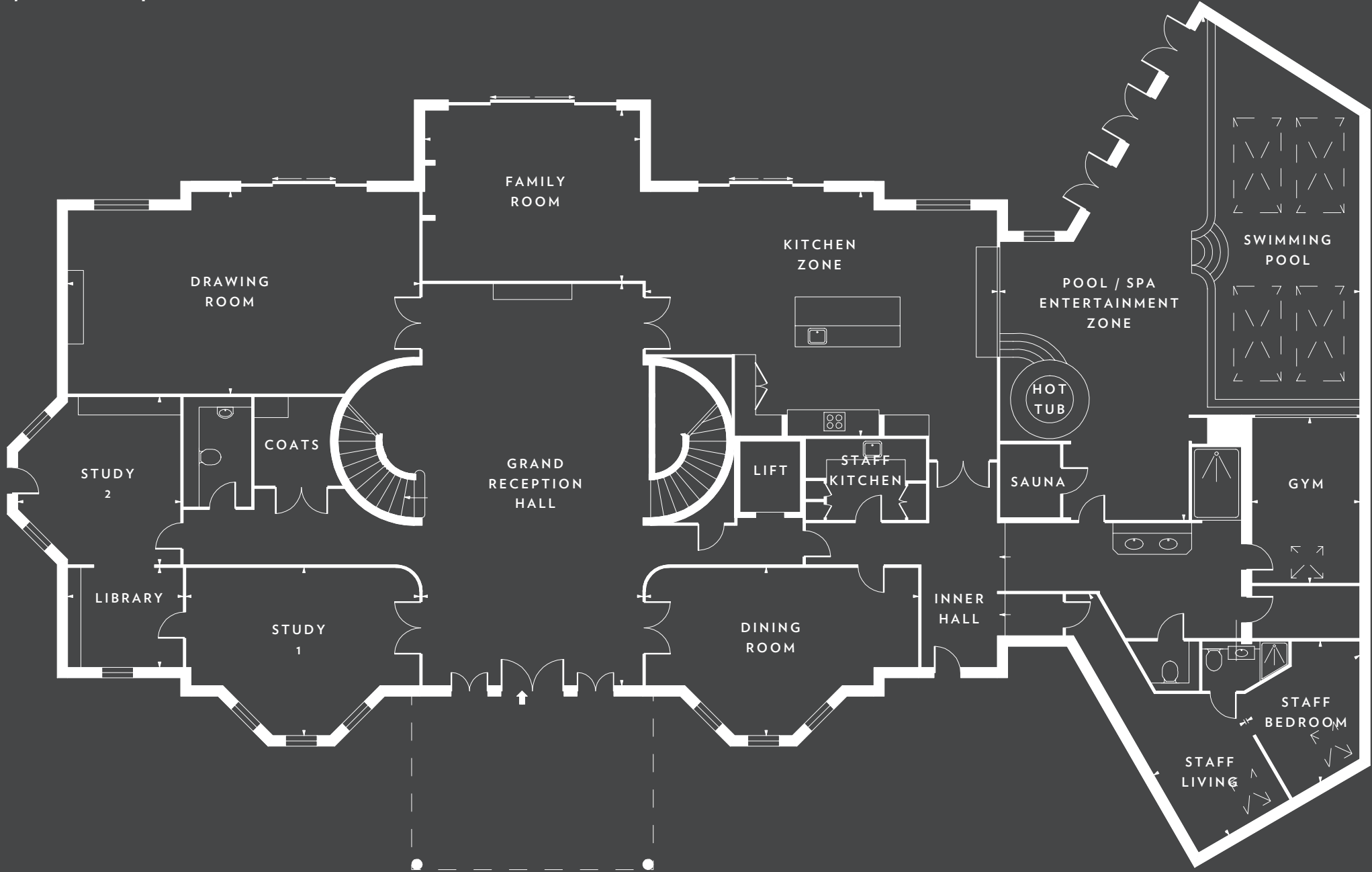








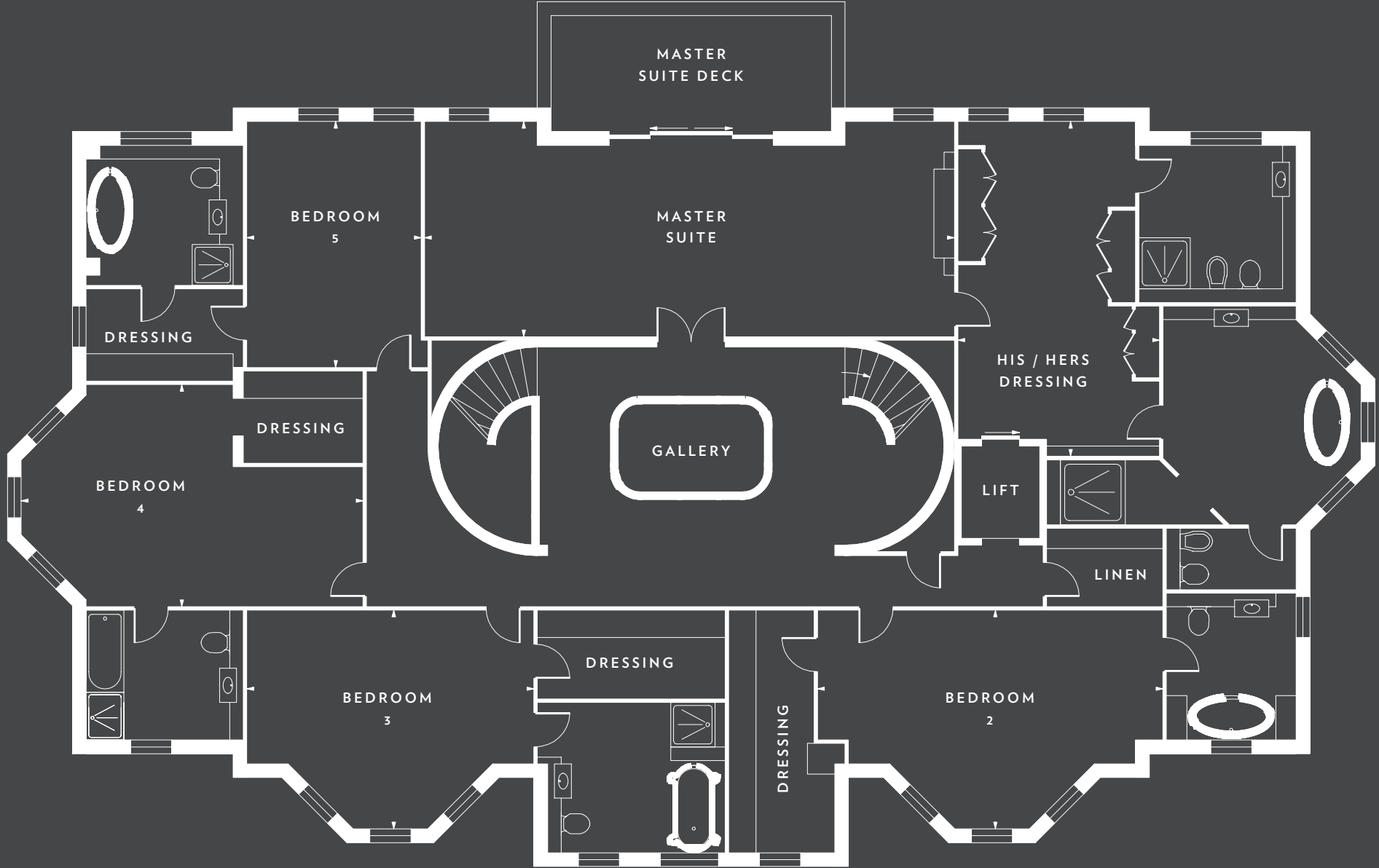
Ground Floor  
604 sq.m / 6,500 sq.ft



Grand Reception Hall	12.0m x 6.3m
Kitchen Zone	10.3m x 7.1m
Study 1	6.7m x 5.1m
Study 2	4.8m x 4.7m
Library	3.5m x 2.9m
Drawing Room	10.2m x 6.2m
Family Room	6.2m x 5.2m
Dining Room	8.1m x 4.9m
Gym	4.9m x 3.2m
Pool / Spa Entertainment Zone	14.5m x 10.4
Staff Living	8.4m x 3.1m
Staff Bedroom	4.1m x 3.9m



First Floor  
406 sq.m / 4,369 sq.ft

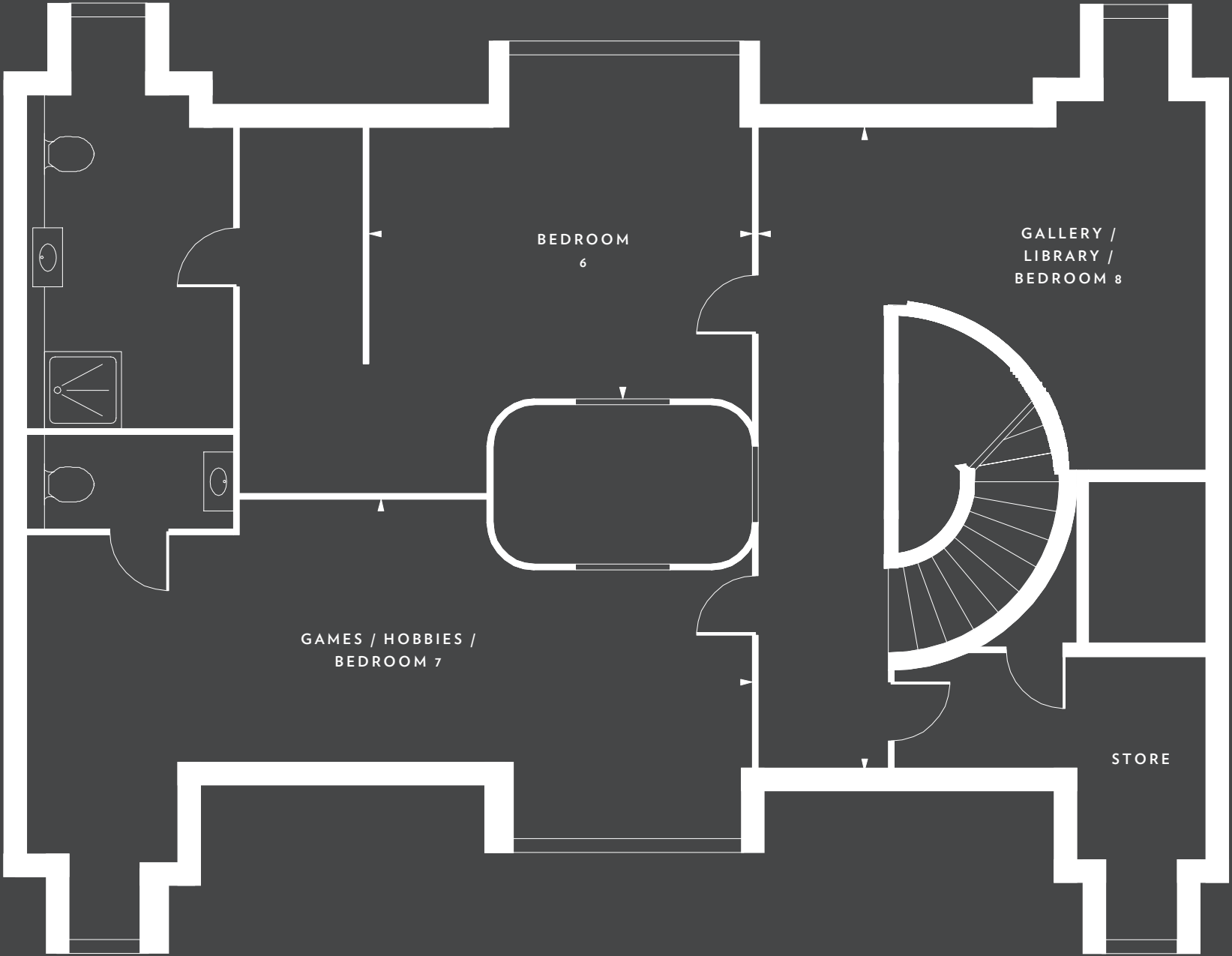


Master Suite	11.6m x 4.7m
His / Hers Dressing	7.5m x 4.4m
Bedroom 2	7.8m x 4.9m
Bedroom 3	6.5m x 5.0m
Bedroom 4	7.6m x 4.9m
Bedroom 5	5.5m x 4.1m



Second Floor  
147 sq.m / 1,582 sq.ft

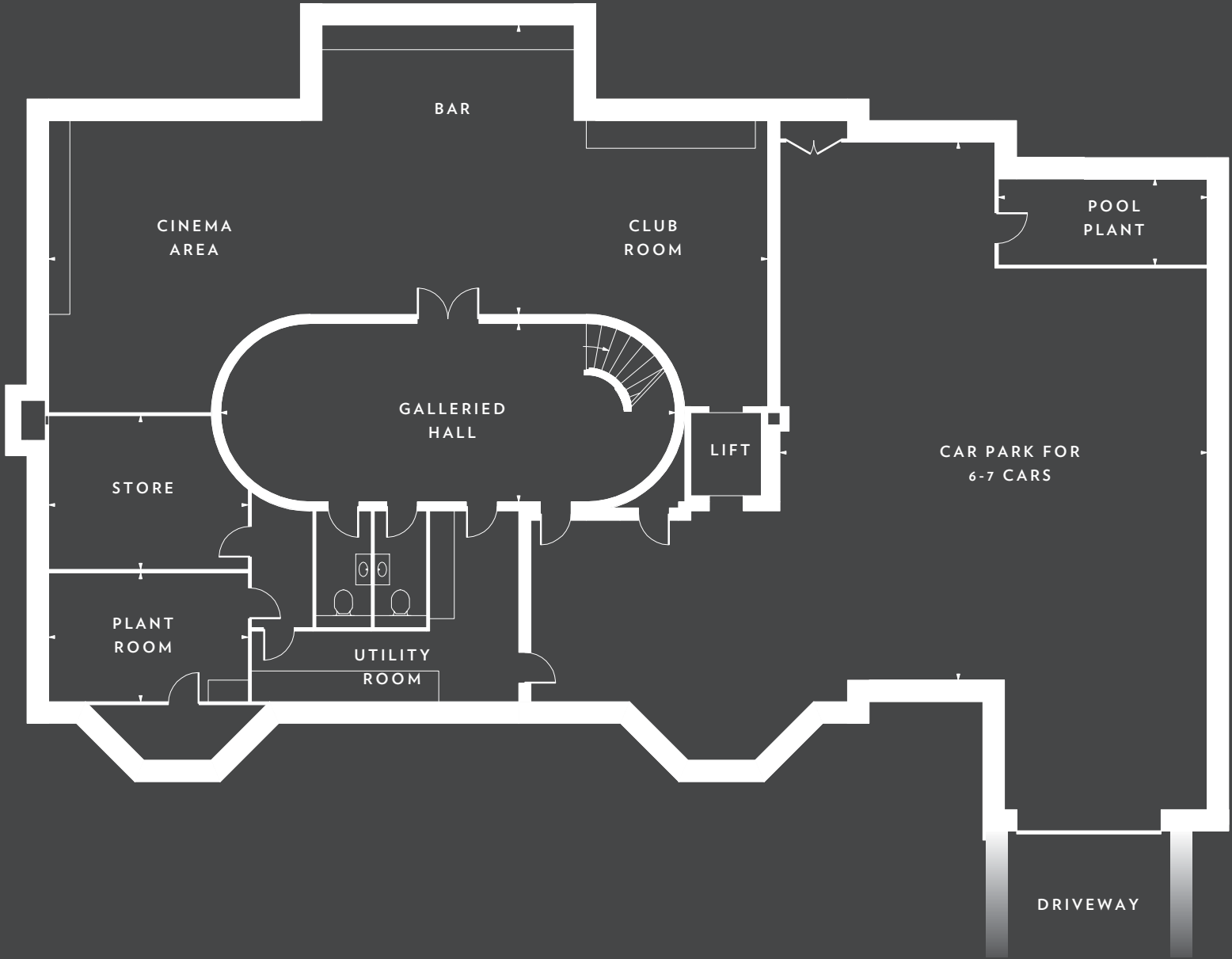
Games / Hobbies Room	9.4m x 4.0m
Gallery / Library	8.4m x 6.0m
Bedroom 6	4.8m x 4.3m





Lower Ground  
440 sq.m / 4,735 sq.ft

Galleried Hall	11.3m x 4.5m
Cinema / Bar / Club Room	18.0m x 7.1m
Car Park for 6 - 7 Cars	13.3m x 10.6m







## Landscaped Gardens









# Specification



- 17,186 sq ft (gross internal) West-backing approaching 1.5 acres within Golf Club Road – regarded as one of the premier roads in the heart of the Estate, just a few minutes' walk to the Club House.
- Six spacious bedroom suites with walk-in dressing rooms.
- All en suite bathrooms accented with Venetian marble and luxury sanitary ware including volcanic limestone baths.
- Private library with two separate studies adjoining with garden views.
- Southerly aspect ground floor indoor pool with Spa suite, including hot tub, sauna and gymnasium.
- Impressive driveway, with covered stone porte-cochère and lower ground floor car park.
- Expansive grand entrance hall with feature staircases and lift. Fantastic ceiling heights throughout.
- Full house air conditioning and under floor heating.
- Creston-controlled home automation with iPhone and iPad control.
- A selection of Venetian marble and timber flooring throughout the house.
- Thomas Ford & Sons handmade contemporary English kitchen with Lacanche and Miele appliances. Separate additional adjacent staff / preparation kitchen.
- Bespoke lower ground floor luxury entertainment suite with wine store, bar, cinema and mirrored dancefloor.
- Self contained staff accommodation.
- Landscaped formal gardens.
- After-care support with 10-year new home warranty.
- Full after-sales concierge service on request.





# Proven Luxury

The Stonehaven Group team has over 40 years' experience building luxury mansions and apartments, with a focus on Prime Central London as well as the country's finest private estates, St. George's Hill and Wentworth.

With a diverse group of specialists, including architects, interior designers, planning consultants and many more, Stonehaven's track record and expertise in luxury property means that each home is delivered with thought, care and passion.



St. George's Hill, Surrey





















Enquire

[enquiries@stonehavengroup.co.uk](mailto:enquiries@stonehavengroup.co.uk)

-

[www.stonehavengroup.co.uk](http://www.stonehavengroup.co.uk)



---

STONEHAVEN  
GROUP