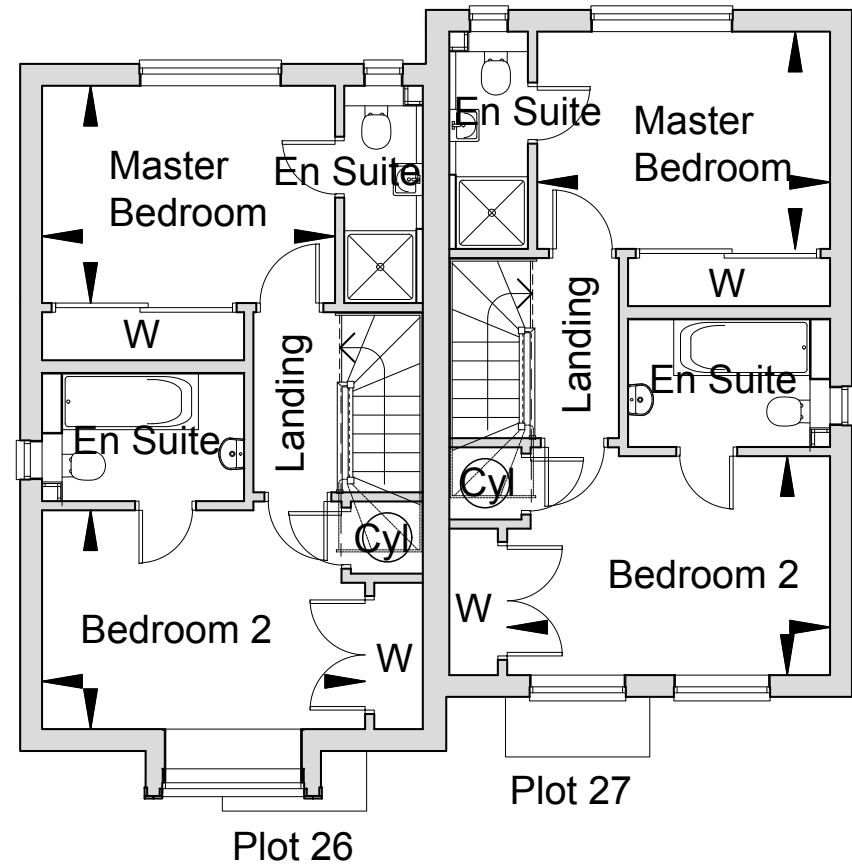
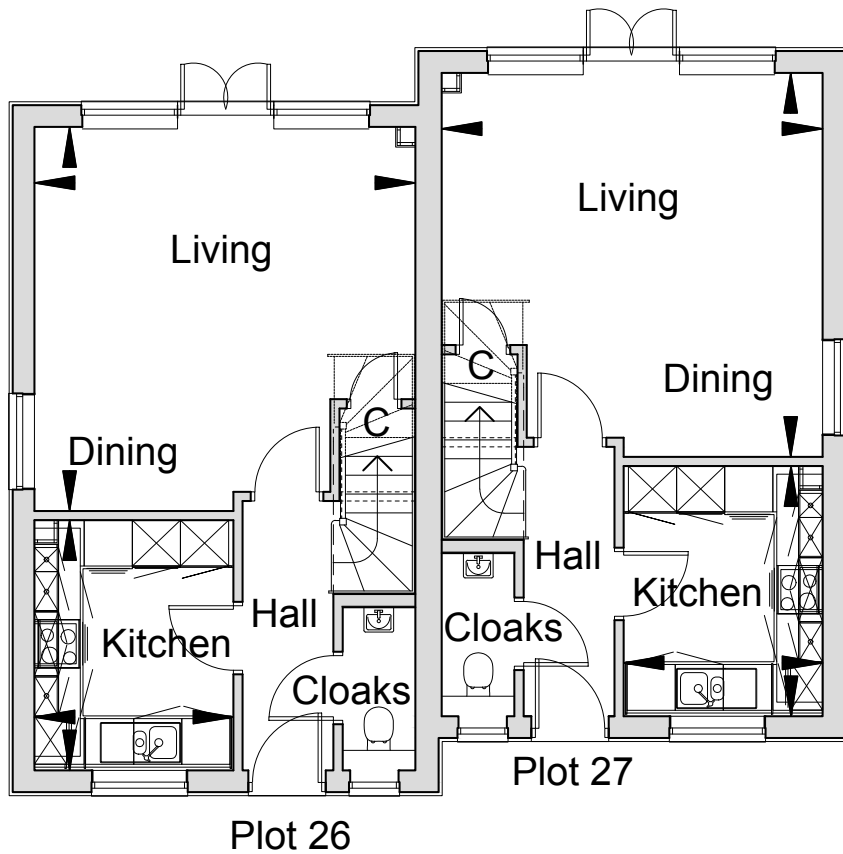




Computer-generated image

BRAMBLEDOWN  
THE CHILHAM - HOMES 26 & 27



**GROUND FLOOR**

Living/Dining Room	4788mm x 4748mm	15' 8" x 15' 7"
Kitchen	3119mm x 2480mm	10' 3" x 8' 2"

**FIRST FLOOR**

Master Bedroom	3652mm x 2709mm	12' 0" x 8' 10"
Bedroom 2	4027mm x 2729mm	13' 3" x 8' 11"

\*Please note kitchen layout is indicative only. Please check with the sales team for detailed layout.



Typical Millwood Interior

### KITCHEN FEATURES

- The kitchen is equipped with a comprehensive range of wall and floor cabinets with laminate worktops, up stands and stainless steel splash back.
- Fully integrated appliances to include a 4 ring induction hob, single electric oven, extractor hood, combi microwave oven, fridge/freezer, dishwasher and washer/dryer.
- Ceramic floor tiles to the kitchen.

### EN SUITES AND CLOAKROOM

- Contemporary white suites with chrome fittings.
- Cabinetry to cloakroom and en suite 1.
- Heated white towel rail provided to the en suites.
- Mirror and shaver socket provided to the en suites.
- Ceramic wall and floor tiles to the en suites and cloakroom.

### ELECTRICAL AND MULTIMEDIA

- White switch plates and sockets throughout.
- Recessed down lighters or pendent provided to all rooms.
- TV and BT points are provided to selected rooms with a provision for Sky plus HD (box, dish and subscription not included).
- Power provided to loft area.

### CENTRAL HEATING AND HOT WATER

- An efficient gas-fired central heating system, via radiators with thermostatic controls, is provided in conjunction with a pressurised hot water cylinder.

### PEACE OF MIND

- Double glazed PVCu windows and doors with multi point locking system.
- External coach lighting provided to all external doors.
- A mains fed smoke alarm is fitted to the hall and landing with a battery backup.

### FINISHING TOUCHES

- Vertical five panel moulded internal doors with chrome fittings finished in a white gloss with half glazed doors to the kitchen and living/dining room.
- French doors provided to the rear of the dining/living room.
- White painted softwood staircase with oak handrail.
- Sliding mirror fronted wardrobe with shelf and hanging space provided in master bedroom.
- Shelf and hanging space provided to wardrobe in bedroom 2.

- All internal joinery will consist of attractive skirtings and architraves finished in a white gloss.

### EXTERNAL FEATURES

- Landscaped front garden with feature planting.
- Rear garden is provided with top soil and an area of patio.
- External tap provided.
- Single garage to have manual opening door, power and light.

### AFTERCARE

- Millwood Designer Homes has a dedicated Customer Aftercare Department providing peace of mind for two years after you move into the property.

### SERVICES

- Mains electricity, gas and pumped foul water drainage.
- BT Fibre Broadband speed upto 300mb.

### GUARANTEES

- All the homes come with a ten-year Premier warranty.

### TENURE

- Freehold.

PEA = B

This brochure has been produced for your guidance only. Whilst every care has been taken, its accuracy cannot be guaranteed. Millwood Designer Homes Ltd reserves the right to change the specification without prior notice. The photographs shown within this brochure are indicative of the quality of a Millwood Designer home and do not necessarily relate to the housetypes.



Typical Millwood Interior



## BRAMBLEDDOWN, CRIPPLE STREET, MAIDSTONE, KENT

Brambledown is an elegant new development of 36 houses comprising a mix of 2 & 3 bedroom semi-detached, 2 & 3 bedroom chalet bungalows and 4 & 5 bedroom detached homes. Each will enjoy the finest fixtures and fittings and be finished to the high standards Millwood are renowned for.

Sat Nav: ME15 6DN



**MILLWOOD**  
designer homes limited

T: 01622 832126

E: [brambledown@mdh.uk.com](mailto:brambledown@mdh.uk.com)  
[www.millwooddesignerhomes.co.uk](http://www.millwooddesignerhomes.co.uk)