

The Dunwich

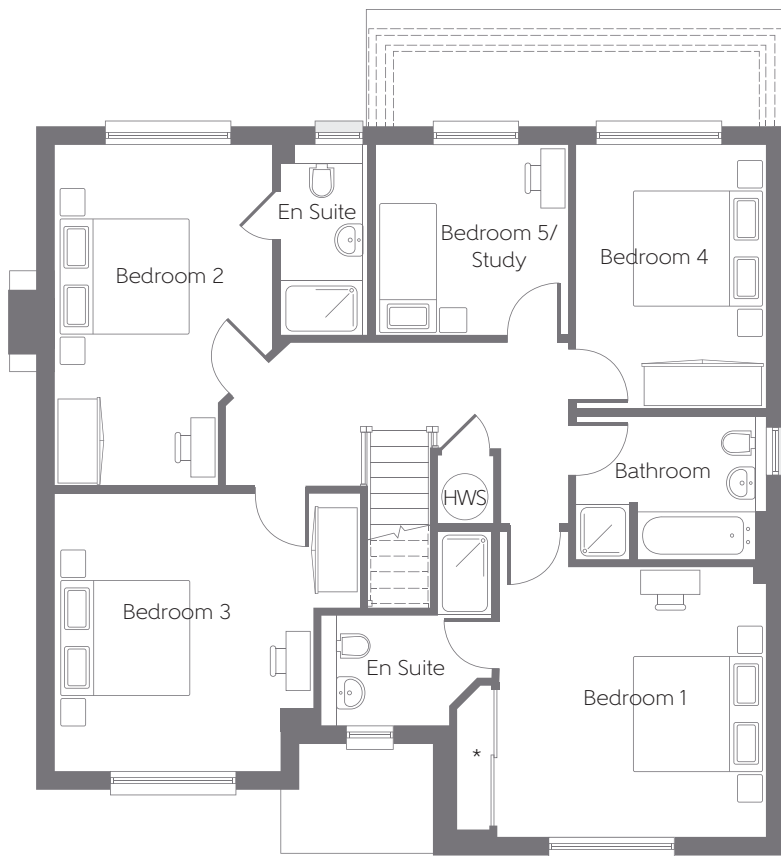
Five bedroom home



Bellway Homes (Wessex Division)
Bellway House, Embankment Way,
Castleman Business Centre,
Ringwood, Hampshire BH24 1EU

Telephone 01425 477666
Fax 01425 476774
www.bellway.co.uk

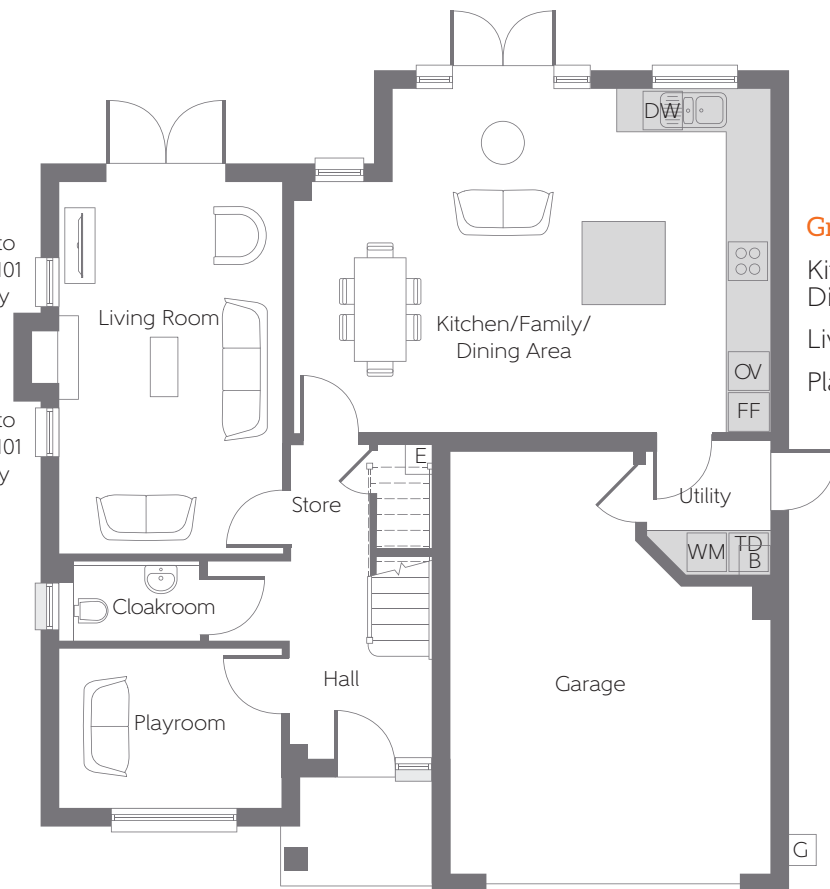
Bellway



First Floor

Bedroom 1	4.461m x 3.832m	14'8" x 12'7"
Bedroom 2	4.871m x 3.085m	16'0" x 10'1"
Bedroom 3	4.338m x 3.977m	14'3" x 13'1"
Bedroom 4	3.753m x 2.748m	12'4" x 9'0"
Bedroom 5/Study	2.765m x 2.702m	9'1" x 8'10"

*Wardrobe to Gold Spec plots only



Ground Floor

Kitchen/Family/Dining Area	6.800m x 4.934m	22'4" x 16'2"
Living Room	5.310m x 3.249m	17'5" x 10'8"
Playroom	3.224m x 2.275m	10'7" x 7'6"

Window to plots 90, 101 & 109 only

Window to plots 90, 101 & 109 only

- B Boiler
- G Gas Meter
- E Electric Meter
- FF Integrated Fridge/Freezer
- TD Tumble Dryer Space
- DW Integrated Dishwasher
- WM Washing Machine Space
- OV Oven
- HWS Hot Water Storage
- Reduced Head Height

Some items shown in this key may be subject to change, and positions could vary from those indicated on this floorplan. Please refer to Sales Advisor for details of your selected plot. Computer generated image shown overleaf of plot 95. External finishes, landscaping and configuration may vary from plot to plot. Please refer to Sales Advisor for further details. All dimensions are approximate and should not be used for carpet sizes, appliance spaces, or furniture. Furniture not to scale and all positions are indicative. Wardrobes are shown to suggest position only, and are not included as standard unless otherwise stated. We operate a policy of continuous improvement and individual features such as kitchen and bathroom layouts, doors, windows, garages and elevational treatments may vary from time to time. Consequently these particulars should be treated as general guidance only and do not constitute a contract, part of a contract or a warranty. 162546/10/16.