

Parson's Prospect

Thorney Road, Eye, Peterborough

PE6 7UN



A new development of eco-friendly 1, 3, 4 and 5 bedroom homes with solar panels fitted as standard in a prime location



This development includes equity share option homes and solar PV panels fitted to all properties



LarkfleetHomes

Parson's Prospect Phase 5

Thorney Road, Eye, Peterborough PE6 7UN



1 One bedroom homes



Knighton (4)
Plot number: 34, 35, 36, 37.

3 Three bedroom homes



Windsor (8)
Plot number: 2, 3, 6, 7, 12, 13, 28, 29.



Ludlow (1)
Plot number: 21.



Newmarket (3)
Plot number: 8, 11, 30.



Nottingham (5)
Plot number: 9, 10, 18, 31, 42.

4 Four bedroom homes



Oaklawn (3)
Plot number: 14, 22, 43.



Sandown (1)
Plot number: 15.



Lingfield (1)
Plot number: 17.



Redcar (4)
Plot number: 1, 19, 20, 47.



Galway (1)
Plot number: 49.

5 Five bedroom homes



Cheltenham (6)
Plot number: 5, 16, 23, 26, 45, 46.



Thirsk (1)
Plot number: 50.



Musselburgh (4)
Plot number: 4, 24, 25, 27.



Ripon (2)
Plot number: 44, 48.

* Affordable housing plots
32, 33, 38, 39, 40, 41.

Every care has been taken to ensure the accuracy of these particulars but the contents shall not form part of any contract and the vendors reserve the right to alter specification and/or design without notice. Purchasers are advised to check with our sales advisors on the plot of their choice. The site details and individual house types may be subject to planning variation. The landscaping shown on the computer generated illustrations of the development is for illustration purposes only.

Musselburgh

INNOVATION • QUALITY • SUSTAINABILITY

Five bedroom house



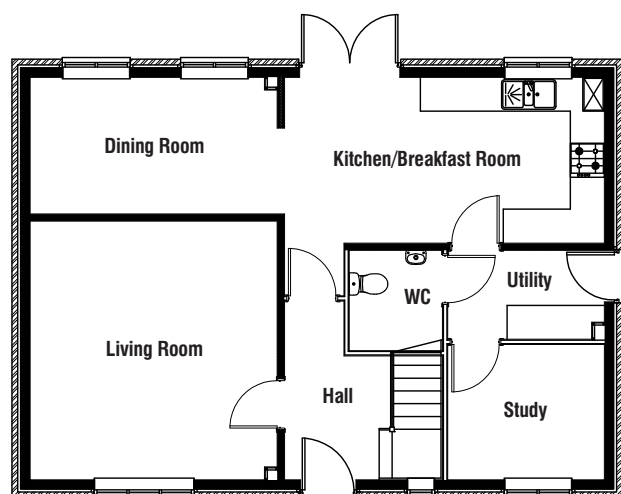
Solar panels

Solar photovoltaic (PV) panels are fitted as standard on selected Larkfleet properties. Please ask your sales advisor to confirm if solar panels are fitted to the property on the plot number you are interested in.

Plot numbers

Please refer to the development brochure for confirmation of the plot numbers for this particular house type.

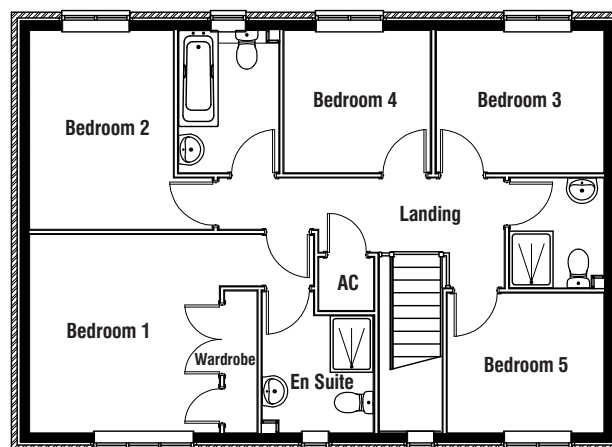
External wall finishes may vary from plot to plot or development to development. Please ask your sales advisor to confirm if the property you are interested in has a brick, stone or rendered external wall finish.



Ground floor

Living Room	4.37m x 4.57m	14'4" x 15'0"
Dining Room	4.37m x 2.42m	14'4" x 7'11"
Kitchen/Breakfast Room	5.66m x 2.93m	18'7" x 9'7"
Study	2.77m x 2.39m	9'1" x 7'10"

All measurements shown are approximate maximum room dimensions.



First floor

Bedroom 1	4.02m x 3.50m	13'2" x 11'6"
En Suite	1.97m x 2.07m	6'5" x 6'9"
Bedroom 2	2.54m x 3.51m	8'4" x 11'7"
Bedroom 3	2.96m x 2.52m	9'9" x 8'3"
Bedroom 4	2.59m x 2.52m	8'6" x 8'3"
Bedroom 5	2.77m x 2.47m	9'1" x 8'1"
Bathroom	1.77m x 2.59m	5'10" x 8'3"
Shower Room	1.67m x 1.94m	5'6" x 6'4"

Depending on plot number, the floor plans for this house type may be opposite to those shown above.

Every care has been taken to ensure the accuracy of these particulars but the contents shall not form part of any contract and the vendors reserve the right to alter specification and/or design without notice. Landscaping shown is for illustration purposes only.

Cheltenham

INNOVATION • QUALITY • SUSTAINABILITY

Five bedroom house



Solar panels

Solar photovoltaic (PV) panels are fitted as standard on selected Larkfleet properties. Please ask your sales advisor to confirm if solar panels are fitted to the property on the plot number you are interested in.

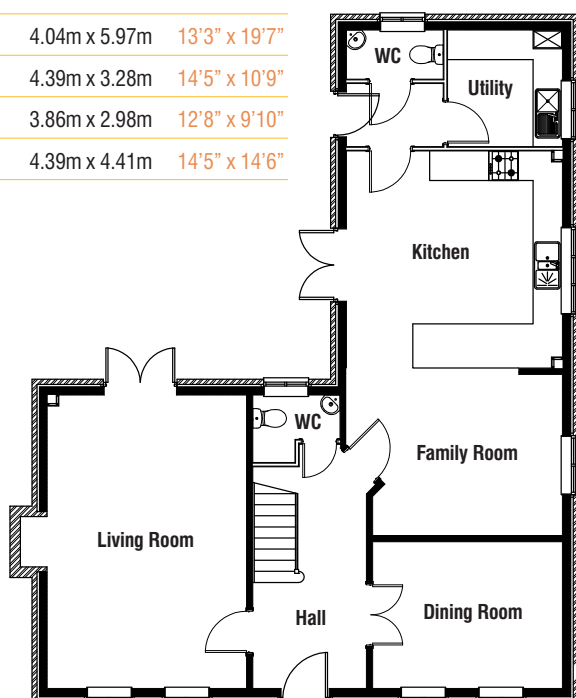
Plot numbers

Please refer to the development brochure for confirmation of the plot numbers for this particular house type.

External wall finishes may vary from plot to plot or development to development. Please ask your sales advisor to confirm if the property you are interested in has a brick, stone or rendered external wall finish.

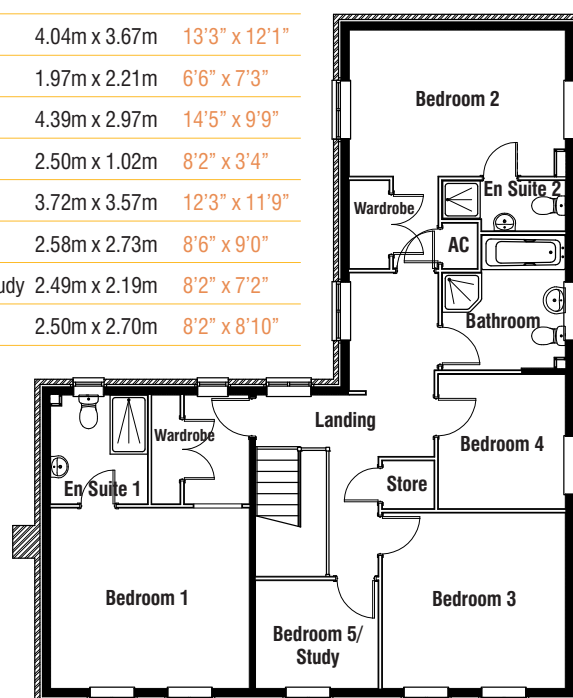
Ground floor

Living Room	4.04m x 5.97m	13'3" x 19'7"
Family Room	4.39m x 3.28m	14'5" x 10'9"
Dining Room	3.86m x 2.98m	12'8" x 9'10"
Kitchen	4.39m x 4.41m	14'5" x 14'6"



First floor

Bedroom 1	4.04m x 3.67m	13'3" x 12'1"
En Suite 1	1.97m x 2.21m	6'6" x 7'3"
Bedroom 2	4.39m x 2.97m	14'5" x 9'9"
En Suite 2	2.50m x 1.02m	8'2" x 3'4"
Bedroom 3	3.72m x 3.57m	12'3" x 11'9"
Bedroom 4	2.58m x 2.73m	8'6" x 9'0"
Bedroom 5/Study	2.49m x 2.19m	8'2" x 7'2"
Bathroom	2.50m x 2.70m	8'2" x 8'10"



All measurements shown are approximate maximum room dimensions.

Depending on plot number, the floor plans for this house type may be opposite to those shown above.

Every care has been taken to ensure the accuracy of these particulars but the contents shall not form part of any contract and the vendors reserve the right to alter specification and/or design without notice. Landscaping shown is for illustration purposes only.

Parson's Prospect Phase 6
Just Launched! Sitemap coming soon.

Newmarket

INNOVATION • QUALITY • SUSTAINABILITY

Three bedroom house



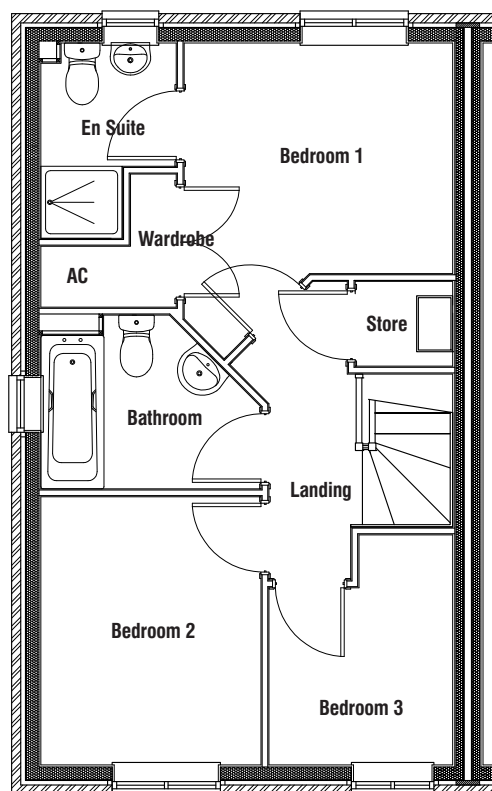
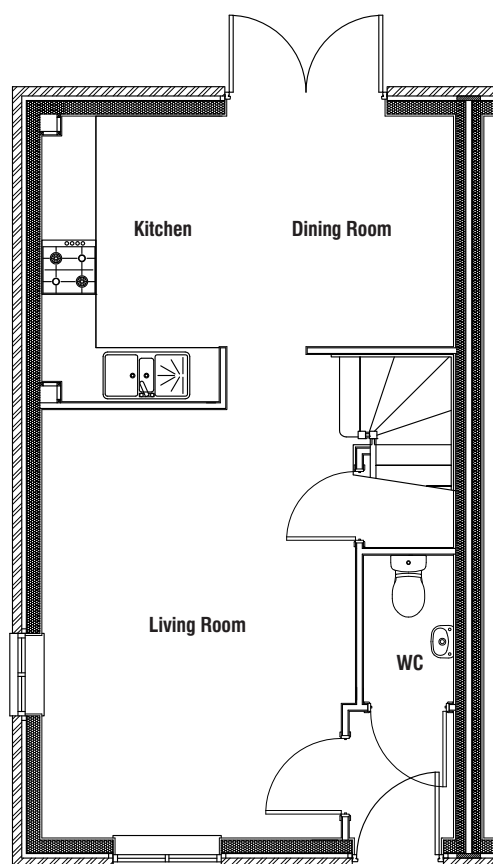
Solar panels

Solar photovoltaic (PV) panels are fitted as standard on selected Larkfleet properties. Please ask your sales advisor to confirm if solar panels are fitted to the property on the plot number you are interested in.

Plot numbers

Please refer to the development brochure for confirmation of the plot numbers for this particular house type.

External wall finishes may vary from plot to plot or development to development. Please ask your sales advisor to confirm if the property you are interested in has a brick, stone or rendered external wall finish.



Ground floor

Living Room	3.47m x 5.35m 11'5" x 17'7"
Kitchen/Dining	4.56m x 3.16m 15'0" x 10'4"
WC	1.62m x 1.00m 5'3" x 3'3"

First floor

Bedroom 1	2.55m x 2.97m 8'4" x 9'9"
Bedroom 2	2.44m x 2.92m 8'0" x 9'7"
Bedroom 3	2.06m x 2.54m 6'9" x 8'4"
Bathroom	1.92m x 2.42m 6'3" x 7'11"

All measurements shown are approximate maximum room dimensions.

Depending on plot number, the floor plans for this house type may be opposite to those shown above.

Every care has been taken to ensure the accuracy of these particulars but the contents shall not form part of any contract and the vendors reserve the right to alter specification and/or design without notice. Landscaping shown is for illustration purposes only.

Oaklawn

Four bedroom house

INNOVATION • QUALITY • SUSTAINABILITY



Solar panels

Solar photovoltaic (PV) panels are fitted as standard on selected Larkfleet properties. Please ask your sales advisor to confirm if solar panels are fitted to the property on the plot number you are interested in.

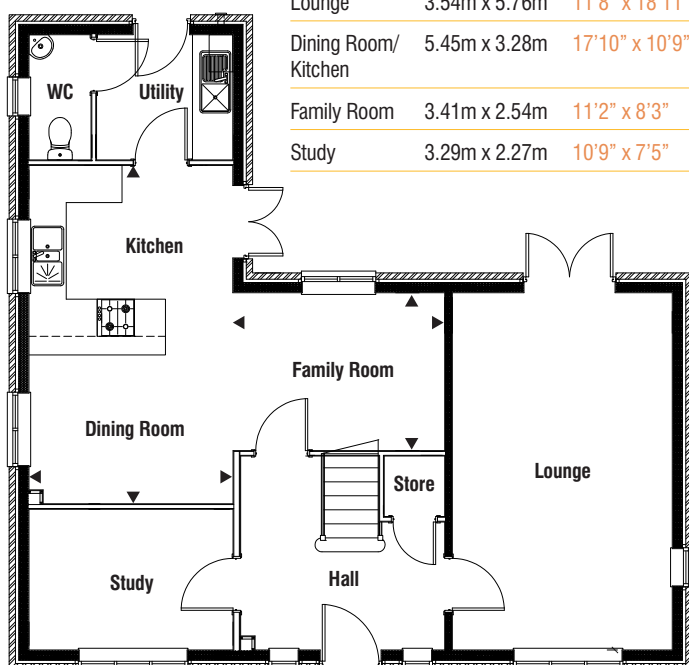
Plot numbers

Please refer to the development brochure for confirmation of the plot numbers for this particular house type.

External wall finishes may vary from plot to plot or development to development. Please ask your sales advisor to confirm if the property you are interested in has a brick, stone or rendered external wall finish.

Ground floor

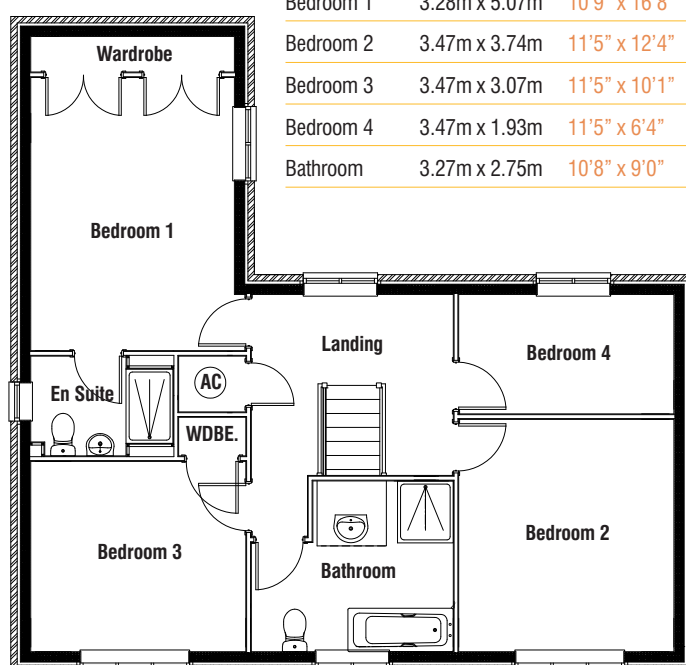
Lounge	3.54m x 5.76m	11'8" x 18'11"
Dining Room/ Kitchen	5.45m x 3.28m	17'10" x 10'9"
Family Room	3.41m x 2.54m	11'2" x 8'3"
Study	3.29m x 2.27m	10'9" x 7'5"



All measurements shown are approximate maximum room dimensions.

First floor

Bedroom 1	3.28m x 5.07m	10'9" x 16'8"
Bedroom 2	3.47m x 3.74m	11'5" x 12'4"
Bedroom 3	3.47m x 3.07m	11'5" x 10'1"
Bedroom 4	3.47m x 1.93m	11'5" x 6'4"
Bathroom	3.27m x 2.75m	10'8" x 9'0"



Depending on plot number, the floor plans for this house type may be opposite to those shown above.

Every care has been taken to ensure the accuracy of these particulars but the contents shall not form part of any contract and the vendors reserve the right to alter specification and/or design without notice. Landscaping shown is for illustration purposes only.

Musselburgh

INNOVATION • QUALITY • SUSTAINABILITY

Five bedroom house



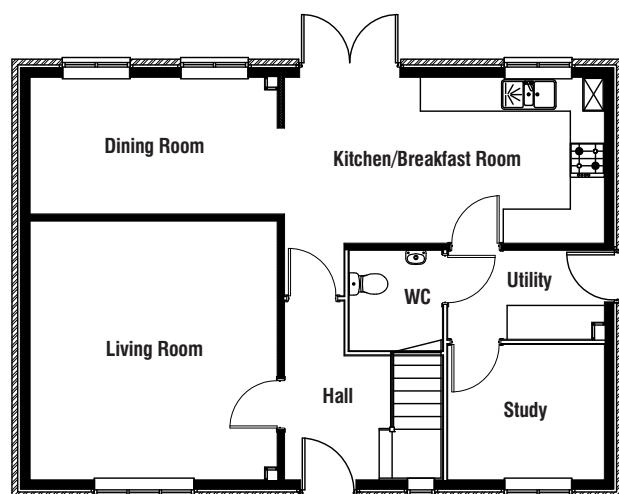
Solar panels

Solar photovoltaic (PV) panels are fitted as standard on selected Larkfleet properties. Please ask your sales advisor to confirm if solar panels are fitted to the property on the plot number you are interested in.

Plot numbers

Please refer to the development brochure for confirmation of the plot numbers for this particular house type.

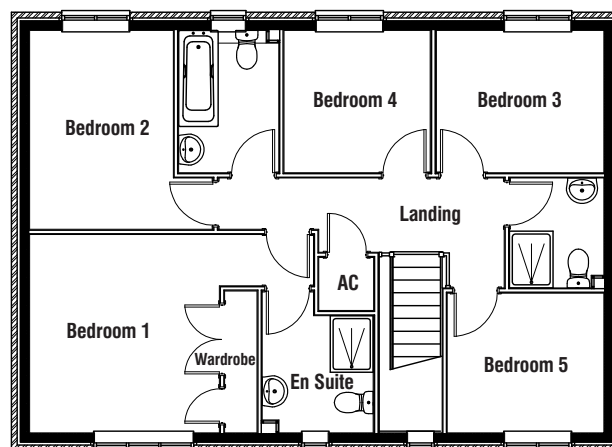
External wall finishes may vary from plot to plot or development to development. Please ask your sales advisor to confirm if the property you are interested in has a brick, stone or rendered external wall finish.



Ground floor

Living Room	4.37m x 4.57m	14'4" x 15'0"
Dining Room	4.37m x 2.42m	14'4" x 7'11"
Kitchen/Breakfast Room	5.66m x 2.93m	18'7" x 9'7"
Study	2.77m x 2.39m	9'1" x 7'10"

All measurements shown are approximate maximum room dimensions.



First floor

Bedroom 1	4.02m x 3.50m	13'2" x 11'6"
En Suite	1.97m x 2.07m	6'5" x 6'9"
Bedroom 2	2.54m x 3.51m	8'4" x 11'7"
Bedroom 3	2.96m x 2.52m	9'9" x 8'3"
Bedroom 4	2.59m x 2.52m	8'6" x 8'3"
Bedroom 5	2.77m x 2.47m	9'1" x 8'1"
Bathroom	1.77m x 2.59m	5'10" x 8'3"
Shower Room	1.67m x 1.94m	5'6" x 6'4"

Depending on plot number, the floor plans for this house type may be opposite to those shown above.

Every care has been taken to ensure the accuracy of these particulars but the contents shall not form part of any contract and the vendors reserve the right to alter specification and/or design without notice. Landscaping shown is for illustration purposes only.

Cheltenham

INNOVATION • QUALITY • SUSTAINABILITY

Five bedroom house



Solar panels

Solar photovoltaic (PV) panels are fitted as standard on selected Larkfleet properties. Please ask your sales advisor to confirm if solar panels are fitted to the property on the plot number you are interested in.

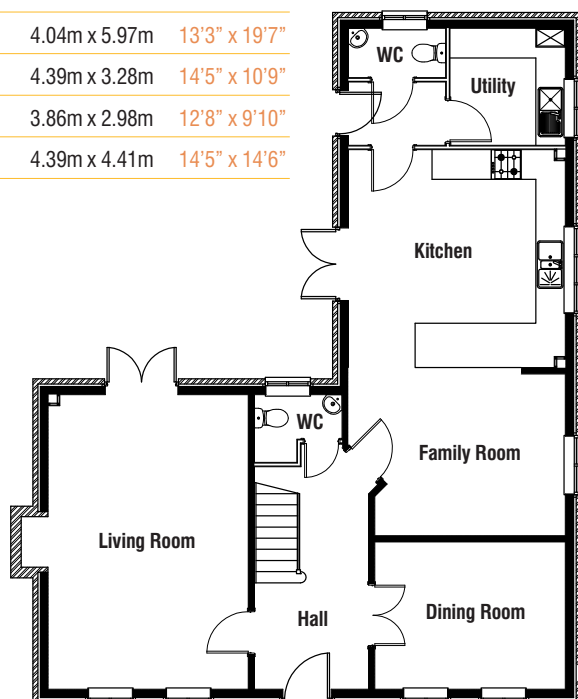
Plot numbers

Please refer to the development brochure for confirmation of the plot numbers for this particular house type.

External wall finishes may vary from plot to plot or development to development. Please ask your sales advisor to confirm if the property you are interested in has a brick, stone or rendered external wall finish.

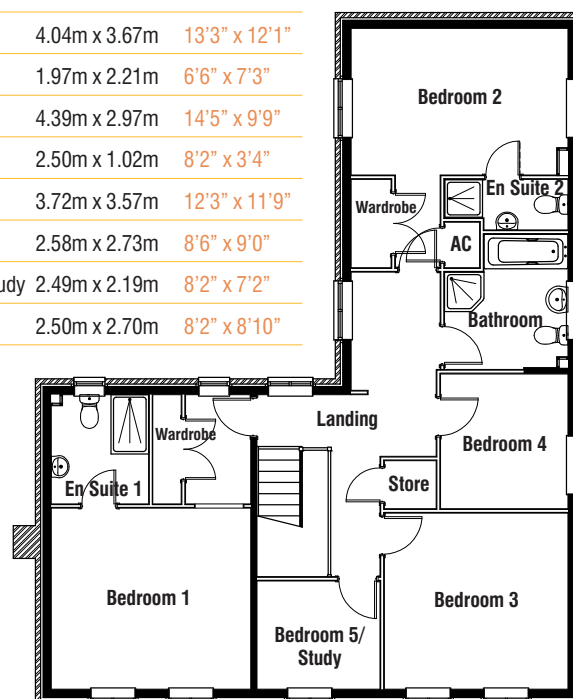
Ground floor

Living Room	4.04m x 5.97m	13'3" x 19'7"
Family Room	4.39m x 3.28m	14'5" x 10'9"
Dining Room	3.86m x 2.98m	12'8" x 9'10"
Kitchen	4.39m x 4.41m	14'5" x 14'6"



First floor

Bedroom 1	4.04m x 3.67m	13'3" x 12'1"
En Suite 1	1.97m x 2.21m	6'6" x 7'3"
Bedroom 2	4.39m x 2.97m	14'5" x 9'9"
En Suite 2	2.50m x 1.02m	8'2" x 3'4"
Bedroom 3	3.72m x 3.57m	12'3" x 11'9"
Bedroom 4	2.58m x 2.73m	8'6" x 9'0"
Bedroom 5/Study	2.49m x 2.19m	8'2" x 7'2"
Bathroom	2.50m x 2.70m	8'2" x 8'10"



All measurements shown are approximate maximum room dimensions.

Depending on plot number, the floor plans for this house type may be opposite to those shown above.

Every care has been taken to ensure the accuracy of these particulars but the contents shall not form part of any contract and the vendors reserve the right to alter specification and/or design without notice. Landscaping shown is for illustration purposes only.



For more information about this development and our home purchasing options, call the sales office on:

0845 450 7872

or email: enquiries@larkfleethomes.co.uk

www.larkfleethomes.co.uk

...better, because we care

LarkfleetHomes

Follow us on:



Larkfleet Homes, Larkfleet House
Falcon Way, Bourne
Lincolnshire PE10 0FF

Telephone: 01778 391555

Fax: 01778 391539

Email: enquiries@larkfleethomes.co.uk

www.larkfleethomes.co.uk