



104 London Road, Shenley,
Hertfordshire, WD7 9BS
shenley@barkersestateagents.com
barkersestateagents.com

BARKERS
ESTATE & LETTING AGENTS

01923 855 266

Little Bushey Lane, Bushey



Barkers are delighted to offer this four bedroom semi detached 1584 square foot house. The property is presented in excellent decorative order and benefits from double glazing, gas central heating, ground floor cloakroom, large lounge/diner, study, refitted kitchen/breakfast room and utility room. Further benefits include refitted first floor bathroom, fitted wardrobes to all bedrooms and parking for upto five cars. Early viewing recommended.

- Four bedrooms
- 1584 Square feet
- Cloakroom
- Study
- Lounge/diner
- Refitted kitchen
- Refitted bathroom/WC
- Presented in excellent decorative

Freehold £800,000

Accommodation comprises:

Porch:

Brick built porch with double glazed panes to both aspects.

Entrance hallway:

Oak flooring, radiator, stairs to first floor.

Lounge/Diner: 24'0 x 15'11 (7.32m x 4.85m)

Double glazed window to rear aspect, Oak flooring, TV point, ceiling spots, radiator.



Study: 10'11 x 9'1 (3.33m x 2.77m)

Double glazed window to front aspect, TV point, radiator, ceiling spots, oak flooring.



Utility room: 15'4 x 8'7 (4.67m x 2.62m)

Plumbing for washing machine.

Cloakroom:

Double glazed frosted window to side aspect, low flush WC, pedestal wash hand basin, boiler.

Kitchen/diner: 22'6 x 9'0 (6.86m x 2.74m)

Double glazed sliding doors to rear garden, range of refitted wall and base units incorporating marble effect roll top work surfaces, integrated electric tower oven, gas hob, stainless steel extractor hood, single drainer sink unit, integrated fridge/freezer, ceiling spots, under cupboard lighting, tiling to floor.



Landing:

Double glazed window to side aspect, fitted carpet, loft access point.



Bedroom 1: 15'4 x 10'10 (4.67m x 3.30m)

Two double glazed windows to front aspect, fitted carpet, radiator, fitted wardrobes spanning one wall.



Bedroom 2: 13'0 x 8'11 (3.96m x 2.72m)

Double glazed window to rear aspect, radiator, fitted carpet, fitted wardrobes with dresser.



Bedroom 3: 10'11 x 9'7 (3.33m x 2.92m)

Double glazed window to front aspect, fitted wardrobes, fitted dresser, radiator, fitted carpet.



Bedroom 4: 7'8 x 7'5 (2.34m x 2.26m)

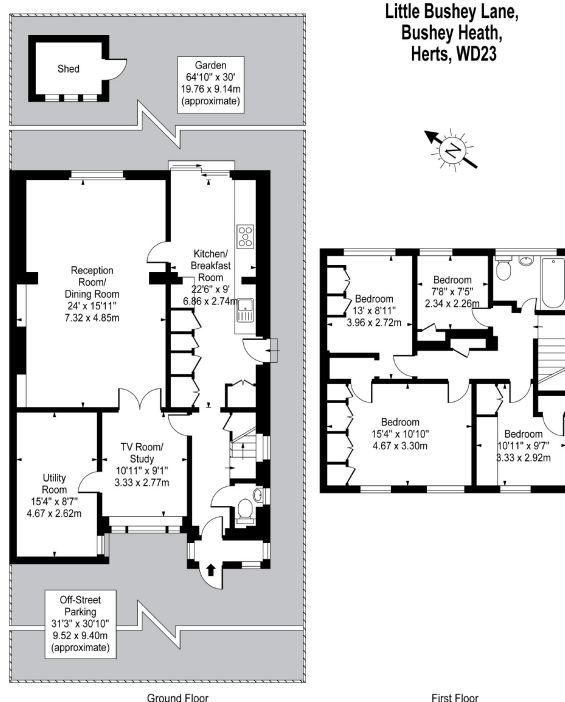
Double glazed window to rear aspect, radiator, laminate flooring, fitted cupboard.

Bathroom/WC:

Double glazed frosted window to rear aspect, refitted three piece Porcellonsa suite comprising of low flush WC, enclosed bath with shower over, vanity sink unit, predominately tiled.

Exterior:





Approx Gross Internal Area **1584 Sq Ft - 147.15 Sq M**

For Illustration Purposes Only - Not To Scale Floor Plan by www.nogaphotostudio.com Ref: No.14700

This floor plan should be used as a general outline for guidance only. Any intending purchaser or lessee should satisfy themselves by inspection, searches, enquiries and full survey as to the correctness of each statement. Any areas, measurements or distances quoted are approximate and should not be used to value a property or be the basis of any sale or let.

Barkers have prepared these property sale particulars as accurately and reliably as possible. However, we are human and occasionally errors occur! Whilst we believe them to be correct they are offered only as a general guide and do not constitute any part of an offer or contract. Intending purchasers should not rely on them as statements of representation of fact, but should satisfy themselves by inspection or otherwise as to their accuracy. Any points of concern arising from them should be clarified with this office before travelling any distance to view the property. All measurements and descriptions are approximate and must not be relied upon for the purpose of ordering carpets, furnishings, fittings, appliances or services. No person employed by Barkers has authority to make or give any representation or warranty whatsoever in respect of this property. Floorplans are NOT TO SCALE. Floorplans are included as a service to applicants to give only a visual impression of the accommodation. It is intended only as a GUIDE TO THE LAYOUT. Dimensions and positions of walls, doors, windows, stairs etc., are approximate.

**CALL BARKERS TO ARRANGE
A VIEWING
01923 855 266**

