



THAKEHAM



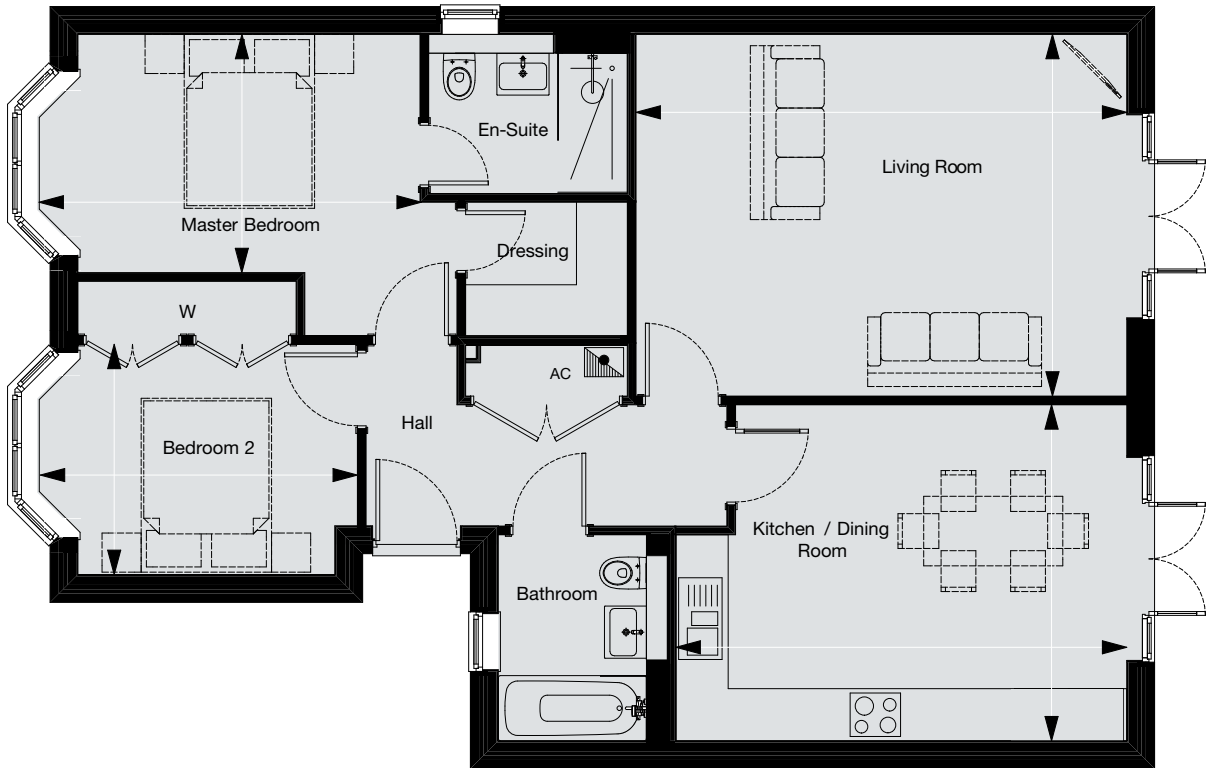
The Slindon
2 bedroom bungalow
Number Six

VALESIDE KEEP
BURGESS HILL

The Slindon

2 bedroom bungalow

Number Six



Living Room	5640mm x 4155mm	18' 5" x 13' 6"
Kitchen/Dining Room	5180mm x 3860mm	17' 0" x 12' 7"
Master Bedroom	4400mm x 2735mm	14' 4" x 9' 0"
Bedroom 2	3680mm x 2640mm	12' 0" x 8' 7"

- KEY
- Velux window
 - Boiler
 - W Wardrobe
 - AC Airing Cupboard
 - C Cupboard

Specification and floor plans may be subject to change. Floor plans for Valeside Keep are for approximate measurements only. Exact layouts may vary. All measurements may vary within a tolerance of 5%. Furniture layouts are indicative only.

SPECIFICATION



Images of previous Thakeham development and are indicative only



Beautifully designed kitchens

- Contemporary, stylish kitchen designed by Commodore
- Deep edged laminate co-ordinated worktops and upstands
- Co-ordinated glass splashback
- One and half bowl stainless steel Rangemaster sink with tap by Vado
- AEG stainless steel single oven
- AEG stainless steel built-in combination microwave
- AEG stainless steel gas hob with 5 burners
- AEG integrated extractor
- Electrolux integrated fridge freezer
- Electrolux integrated dishwasher
- Electrolux integrated washer/dryer

Stylish bathrooms

- Contemporary white Twyford sanitaryware to bathroom and en-suite, with chrome accessories by Vado
- Co-ordinating white vanity units to en-suite
- White Kaldewei steel bath with chrome accessories by Vado
- Low profile shower tray to shower cubicles with Vado shower system
- Ceramic wall tiling to selected areas

Heating, electrical and lighting

- Gas fired central heating via underfloor heating throughout
- Energy efficient combination boiler with flue gas heat recovery
- LED downlights to hall, kitchen, cloakroom, bathroom and en-suite
- LED under unit lighting to kitchen
- White sockets and switch plates throughout
- Pendant lighting to remaining rooms
- TV/satellite point to living room with secondary TV points to bedrooms
- Internal digital TV aerial with distribution amplifier
- Local Area Network (LAN) data points to living room, master bedroom and bedroom 2
- External lighting to front and rear of house and front of garage

Interior finishes

- Solid core internal doors with contemporary chrome ironmongery
- Dressing area to master bedroom fully fitted with full and mid rail hanging, vertical and top shelving
- Wardrobe to second bedroom fitted with shelf and hanging rail
- Ceramic floor tiling to hall, kitchen/dining, bathroom and en-suite
- Carpet to remaining rooms
- Satin paint finish to all internal joinery

Security and peace of mind

- Mains fed smoke detectors with battery back-up
- Mains fed carbon monoxide detector positioned adjacent to gas boiler
- 10 year NHBC Buildmark Warranty, including 2 year defect and emergency out-of-hours cover

External

- Painted steel external entrance door with multipoint locking system
- Painted steel garage up and over door
- Private parking and garage
- White UPVC double glazed windows and French doors to rear garden
- Turf to rear gardens
- Paved paths and patio areas
- External power point
- External tap

Please note that Thakeham strive to improve its homes and reserves the right to alter any part of the specification without notice provided that any such change shall not diminish the value of the property.