





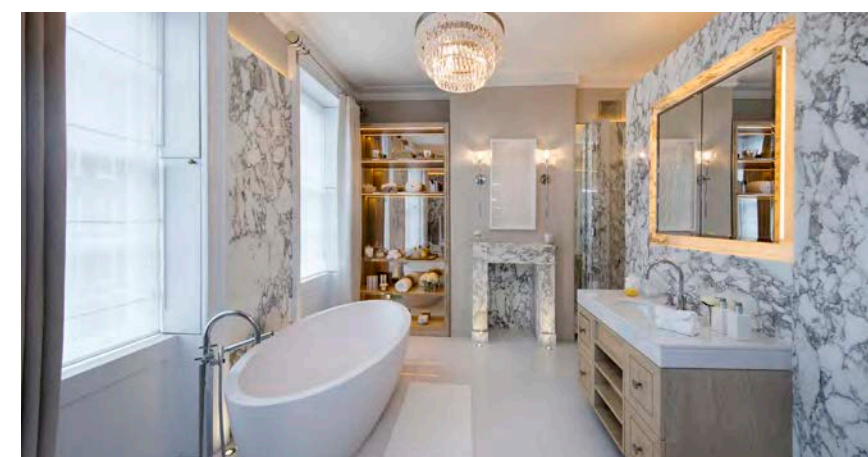
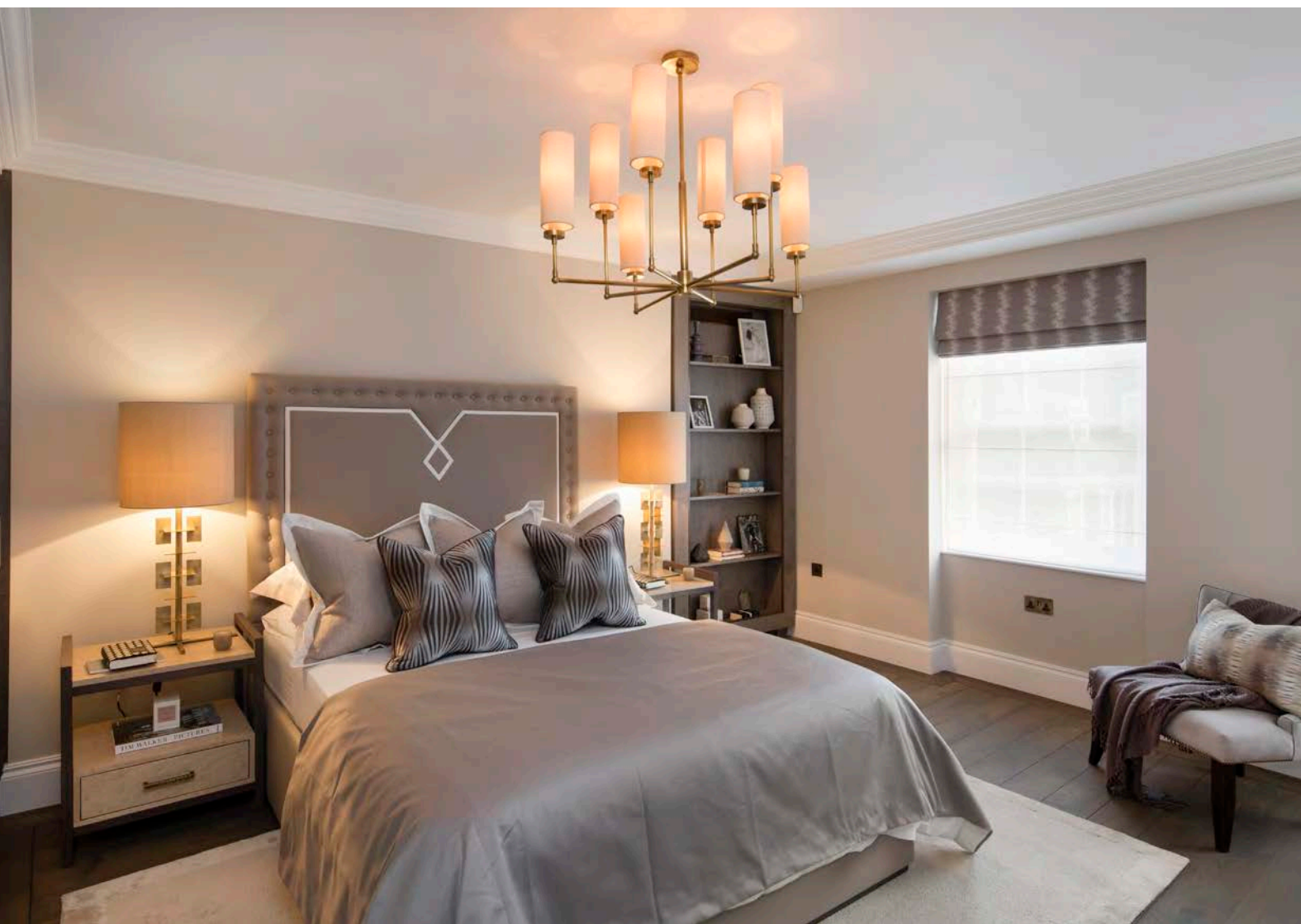
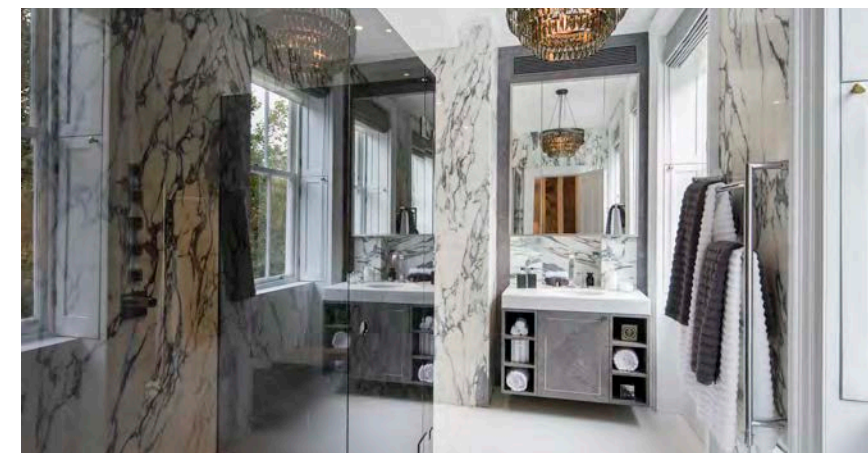


The entire house has been beautifully refurbished, combining period features with meticulous craftsmanship and the latest in technology and design along with bespoke joinery and sumptuous furnishings throughout.

Grand formal reception rooms on the ground and first floors are full of period details including panelling, cornicing and fireplaces. The dining room is on the ground floor with an adjacent cigar room that has access directly onto a large raised terrace, perfect for entertaining.

Overlooking St James's Park, this exquisitely restored Queen Anne townhouse is in the heart of historic Westminster. Dating back to 1704 and with an intricately carved wooden canopy over the front door, this is a rare and very fine example of early eighteenth century architecture.





- Period Features
- Large Patio Garden
- Grand Entertaining Rooms
- Spacious Family Rooms
- Magnificent Green Views
- Grade I Listed



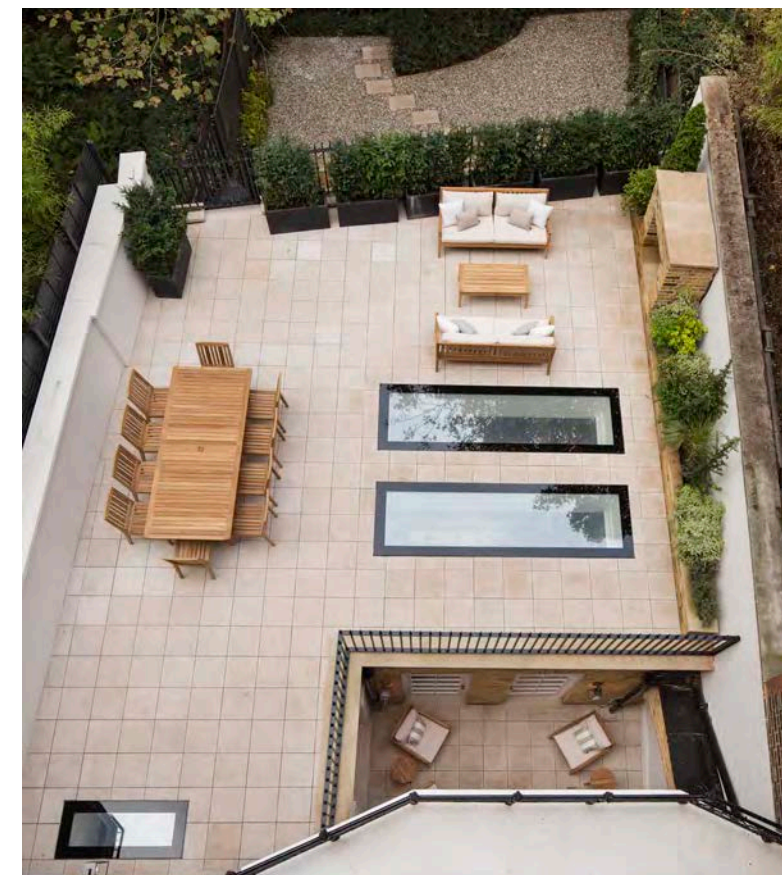


The principal drawing room is on the first floor and has four floor to ceiling sash windows giving magnificent views across St James's Park. There is also a striking study which looks down onto the handsome streetscape of Queen Anne's Gate.

The garden floor has a contemporary kitchen as well as spacious family living and dining areas with French windows opening directly onto a landscaped patio garden. There is a staff room, a catering kitchen, a utility room and a wine cellar to the rear of the garden floor with a separate staff entrance onto the street.

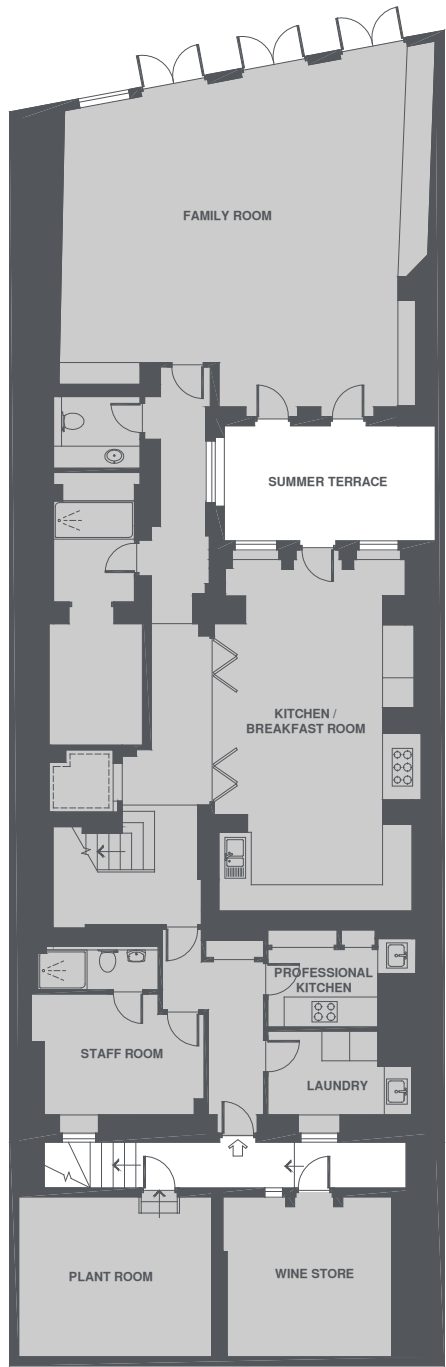
The second floor has a magnificent master bedroom suite, with his and hers bathrooms and a commodious dressing room, fitted with bespoke joinery throughout. The third and fourth floors provide four further bedrooms, all with en-suite bathrooms.

Situated between Buckingham Palace and the Houses of Parliament this property is ideally located for access throughout London with a host of amenities on nearby Victoria Street and the famous private members clubs, restaurants and shops of St James's a short walk across the Park.

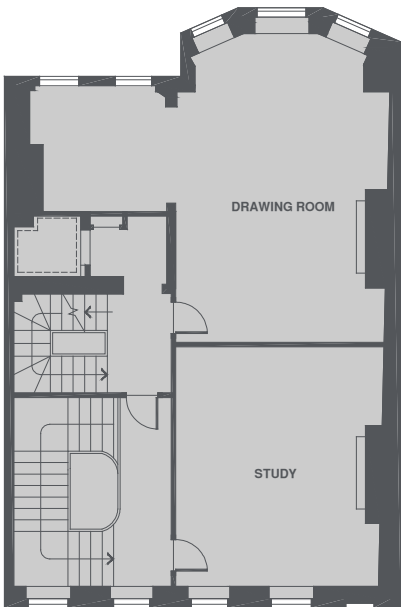




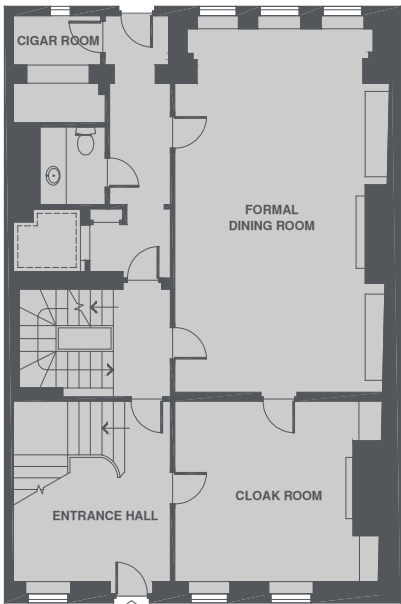
28 Queen Anne’s Gate,
Westminster, London SW1P



Garden Floor



1ST FLOOR



GROUND FLOOR

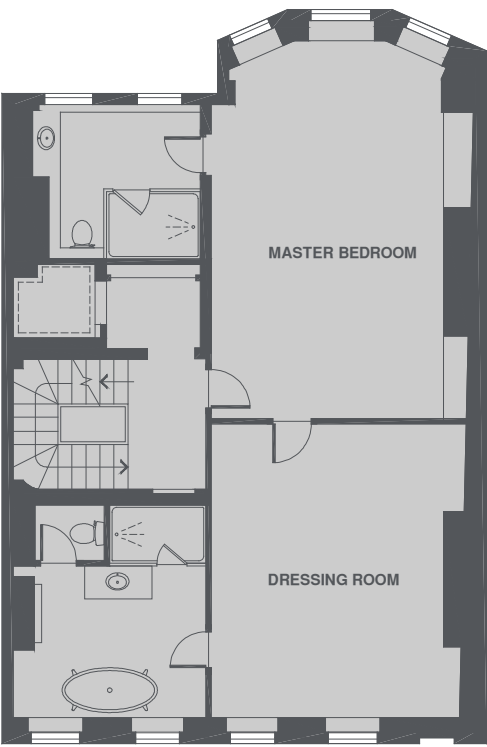
TOTAL APPROX. FLOOR AREA 7230 SQ. FT. (671.7 SQ. M.)



4TH FLOOR

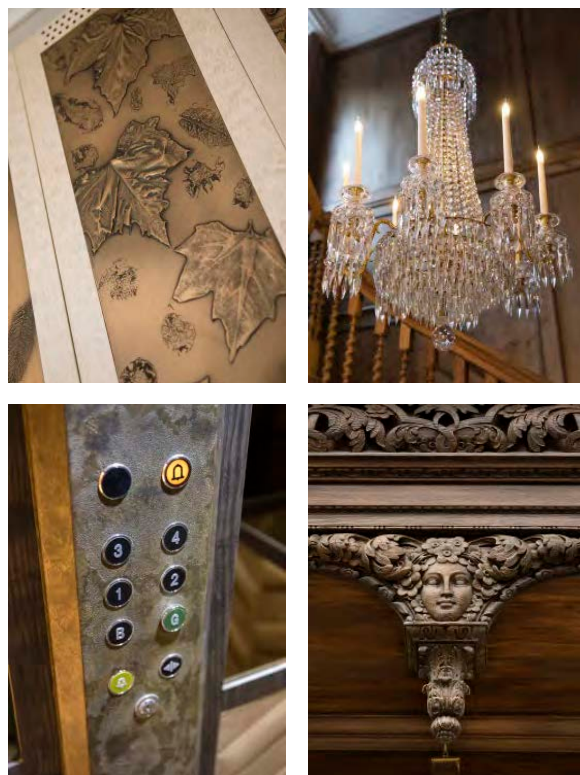


3RD FLOOR



2ND FLOOR

TOTAL APPROX. FLOOR AREA 7230 SQ. FT. (671.7 SQ. M.)



Freehold
Price on Application



Westminster
020 7590 9578

dexters.co.uk

dexters.co.uk