



WHARF SW11

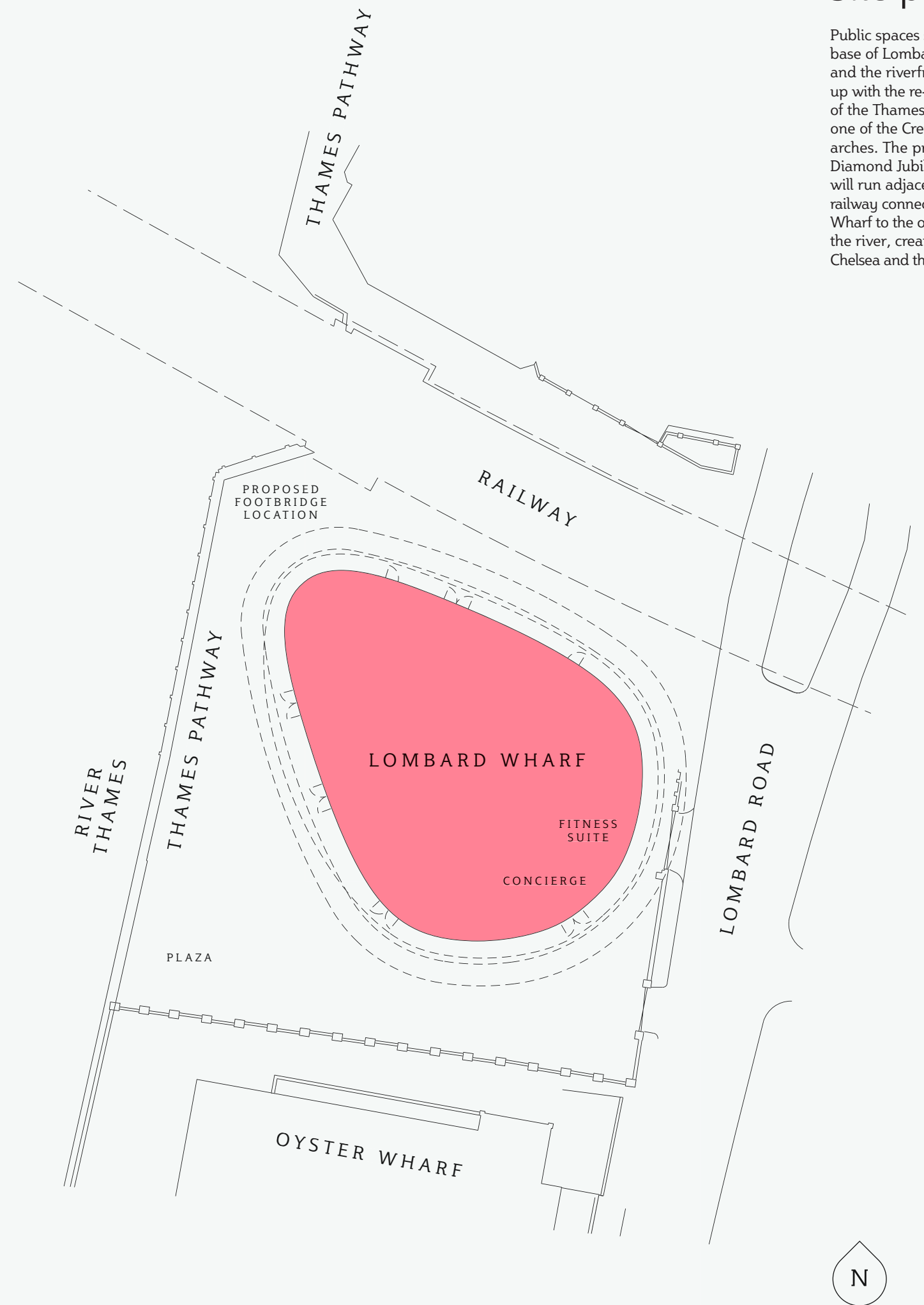
FLOOR PLANS & SPECIFICATION

THE PLANS



Site plan

Public spaces surround the base of Lombard Wharf, and the riverfront is opened up with the re-establishment of the Thames path through one of the Cremorne bridge arches. The proposed Diamond Jubilee Footbridge will run adjacent to the railway connecting Lombard Wharf to the opposite side of the river, creating a link to Chelsea and the King's Road.





Plot schedule

PLOT NO.	FLOOR	BEDS	BATHS	TOTAL SQ M	TOTAL SQ FT	ASPECT	PAGE NO.
25	3rd Floor	2	2	91.5	985	SINGLE	17
26	4th Floor	2	2	98.3	1,058	SINGLE	19
27	4th Floor	1	1	51.4	553	SINGLE	19
29	4th Floor	1	1	57.3	617	SINGLE	19
32	4th Floor	2	2	91.5	985	SINGLE	19
33	5th Floor	2	2	96.6	1,040	DUAL	21
34	5th Floor	2	2	81.4	876	DUAL	21
35	5th Floor	2	1	71.6	771	DUAL	21
36	5th Floor	1	1	51.6	555	SINGLE	21
37	5th Floor	3	2	94.3	1,015	DUAL	21
38	6th Floor	2	2	96.6	1,040	DUAL	23
39	6th Floor	2	2	81.4	876	DUAL	23
40	6th Floor	2	1	71.6	771	DUAL	23
41	6th Floor	1	1	51.6	555	SINGLE	23
42	6th Floor	3	2	94.3	1,015	DUAL	23
43	7th Floor	2	2	96.6	1,040	DUAL	25
44	7th Floor	2	2	81.4	876	DUAL	25
45	7th Floor	2	1	71.6	771	DUAL	25
46	7th Floor	1	1	51.6	555	SINGLE	25
47	7th Floor	3	2	94.3	1,015	DUAL	25
48	8th Floor	2	2	96.6	1,040	DUAL	27
49	8th Floor	2	2	81.4	876	DUAL	27
50	8th Floor	2	1	71.6	771	DUAL	27
51	8th Floor	1	1	51.6	555	SINGLE	27
52	8th Floor	3	2	94.3	1,015	DUAL	27
53	9th Floor	2	2	96.6	1,040	DUAL	29
54	9th Floor	2	2	81.4	876	DUAL	29
55	9th Floor	2	1	71.6	771	DUAL	29
56	9th Floor	1	1	51.6	555	SINGLE	29
57	9th Floor	3	2	94.3	1,015	DUAL	29
58	10th Floor	2	2	96.6	1,040	DUAL	31
59	10th Floor	2	2	81.4	876	DUAL	31
60	10th Floor	2	1	71.6	771	DUAL	31
61	10th Floor	1	1	51.6	555	SINGLE	31
62	10th Floor	3	2	94.3	1,015	DUAL	31
63	11th Floor	2	2	96.6	1,040	DUAL	33
64	11th Floor	2	2	81.4	876	DUAL	33
65	11th Floor	2	1	71.6	771	DUAL	33
66	11th Floor	1	1	51.6	555	SINGLE	33
67	11th Floor	3	2	94.3	1,015	DUAL	33

Plot schedule

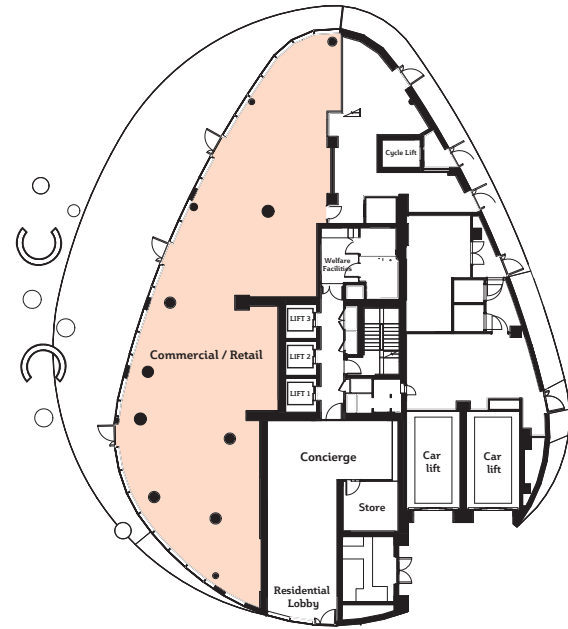
PLOT NO.	FLOOR	BEDS	BATHS	TOTAL SQ M	TOTAL SQ FT	ASPECT	PAGE NO.
68	12th Floor	2	2	96.6	1,040	DUAL	35
69	12th Floor	2	2	81.4	876	DUAL	35
70	12th Floor	2	1	71.6	771	DUAL	35
71	12th Floor	1	1	51.6	555	SINGLE	35
72	12th Floor	3	2	94.3	1,015	DUAL	35
73	13th Floor	2	2	96.6	1,040	DUAL	37
74	13th Floor	2	2	81.4	876	DUAL	37
75	13th Floor	2	1	71.6	771	DUAL	37
76	13th Floor	1	1	51.6	555	SINGLE	37
77	13th Floor	3	2	94.3	1,015	DUAL	37
78	14th Floor	2	2	96.6	1,040	DUAL	35
79	14th Floor	2	2	81.4	876	DUAL	35
80	14th Floor	2	2	71.8	773	DUAL	35
81	14th Floor	1	1	51.6	555	SINGLE	35
82	14th Floor	3	2	94.3	1,015	DUAL	35
83	15th Floor	2	2	96.6	1,040	DUAL	33
84	15th Floor	2	2	81.4	876	DUAL	33
85	15th Floor	2	2	71.8	773	DUAL	33
86	15th Floor	1	1	51.6	555	SINGLE	33
87	15th Floor	3	2	94.3	1,015	DUAL	33
88	16th Floor	2	2	96.6	1,040	DUAL	31
89	16th Floor	2	2	81.4	876	DUAL	31
90	16th Floor	2	2	71.8	773	DUAL	31
91	16th Floor	1	1	51.6	555	SINGLE	31
92	16th Floor	3	2	94.3	1,015	DUAL	31
93	17th Floor	2	2	96.6	1,040	DUAL	29
94	17th Floor	2	2	81.4	876	DUAL	29
95	17th Floor	2	2	71.8	773	DUAL	29
96	17th Floor	1	1	51.6	555	SINGLE	29
97	17th Floor	3	2	94.3	1,015	DUAL	29
98	18th Floor	2	2	96.6	1,040	DUAL	27
99	18th Floor	2	2	81.4	876	DUAL	27
100	18th Floor	2	2	71.8	773	DUAL	27
101	18th Floor	1	1	51.6	555	SINGLE	27
102	18th Floor	3	2	94.3	1,015	DUAL	27
103	19th Floor	2	2	96.6	1,040	DUAL	25
104	19th Floor	2	2	81.4	876	DUAL	25
105	19th Floor	2	2	71.8	773	DUAL	25
106	19th Floor	1	1	51.6	555	SINGLE	25
107	19th Floor	3	2	94.3	1,015	DUAL	25

Plot schedule

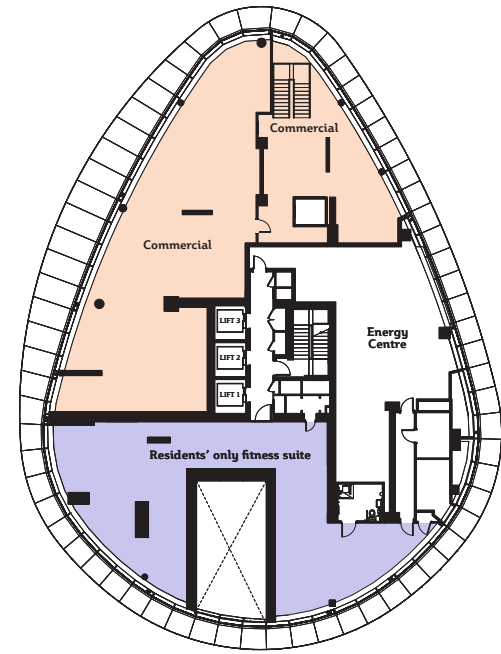
PLOT NO.	FLOOR	BEDS	BATHS	TOTAL SQ M	TOTAL SQ FT	ASPECT	PAGE NO.
108	20th Floor	2	2	96.6	1,040	DUAL	39
109	20th Floor	2	2	81.4	876	DUAL	39
110	20th Floor	2	2	71.8	773	DUAL	39
111	20th Floor	1	1	51.6	555	SINGLE	39
112	20th Floor	3	2	94.3	1,015	DUAL	39
113	21st Floor	2	2	96.6	1,040	DUAL	41
114	21st Floor	2	2	81.4	876	DUAL	41
115	21st Floor	2	2	71.8	773	DUAL	41
116	21st Floor	1	1	51.6	555	SINGLE	41
117	21st Floor	3	2	94.3	1,015	DUAL	41
118	22nd Floor	2	2	96.6	1,040	DUAL	39
119	22nd Floor	2	2	81.4	876	DUAL	39
120	22nd Floor	2	2	71.8	773	DUAL	39
121	22nd Floor	1	1	51.6	555	SINGLE	39
122	22nd Floor	3	2	94.3	1,015	DUAL	39
123	23rd Floor	2	2	96.6	1,040	DUAL	25
124	23rd Floor	2	2	81.4	876	DUAL	25
125	23rd Floor	2	2	71.8	773	DUAL	25
126	23rd Floor	1	1	51.6	555	SINGLE	25
127	23rd Floor	3	2	94.3	1,015	DUAL	25
128	24th Floor	2	2	96.6	1,040	DUAL	27
129	24th Floor	2	2	81.4	876	DUAL	27
130	24th Floor	2	2	71.8	773	DUAL	27
131	24th Floor	1	1	51.6	555	SINGLE	27
132	24th Floor	3	2	94.3	1,015	DUAL	27
133	25th Floor	3	TBC	TBC	TBC	360°	
134	26th Floor	3	TBC	TBC	TBC	360°	

Lombard Wharf floor plates

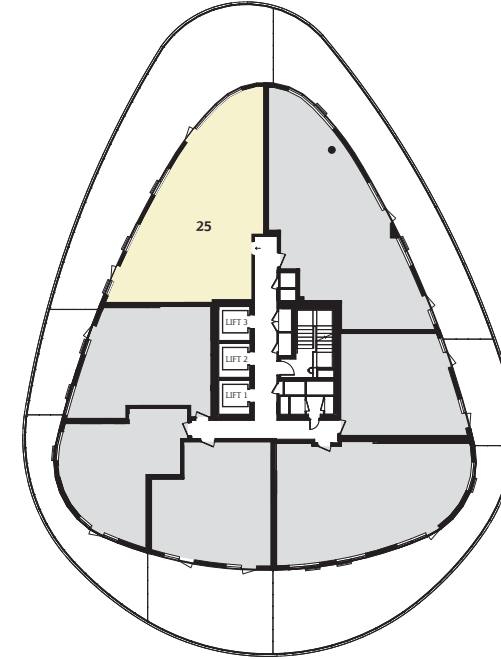
Ground Floor



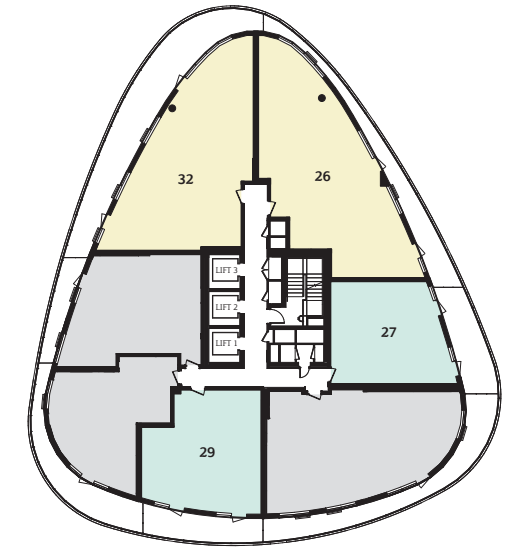
Mezzanine



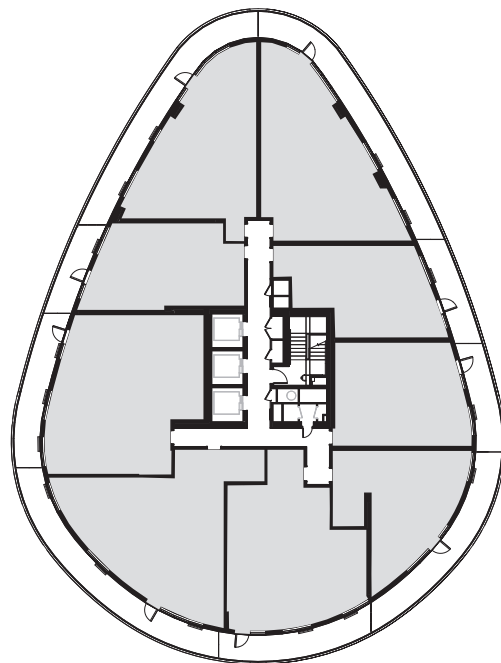
Floor 3



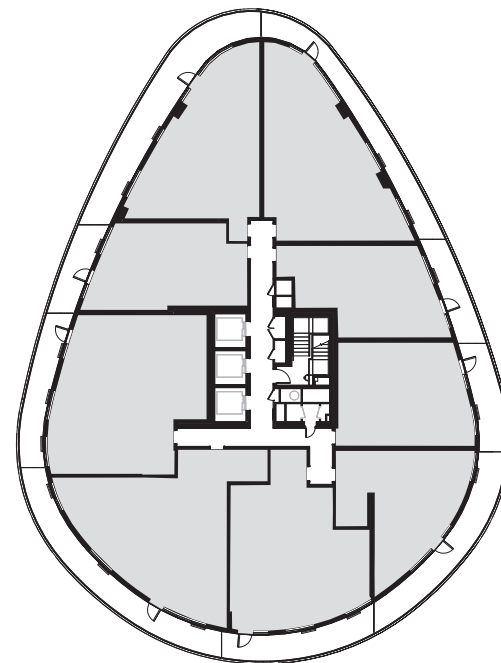
Floor 4



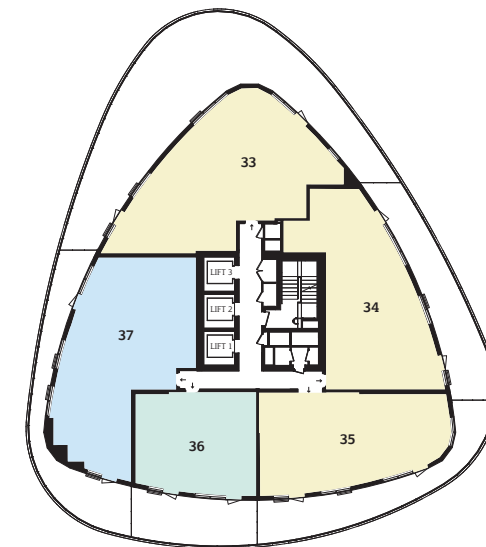
Floor 1



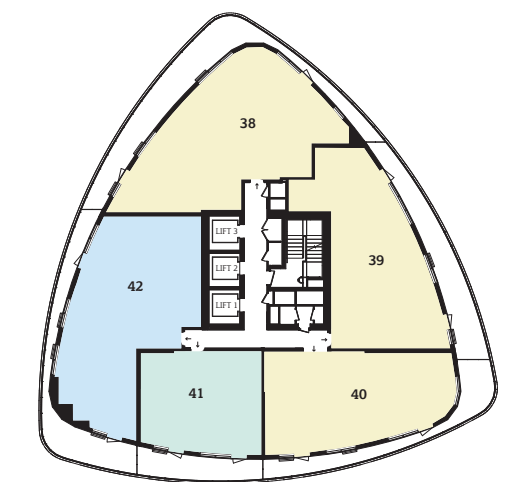
Floor 2



Floor 5



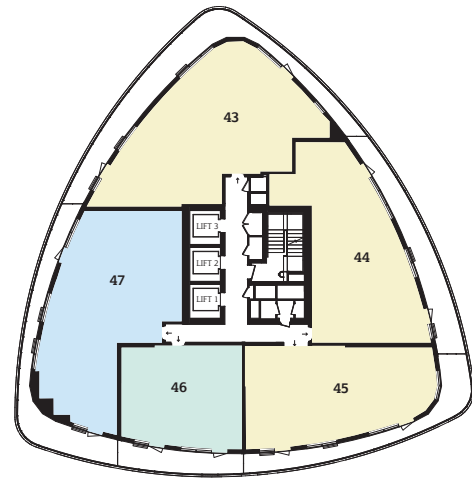
Floor 6



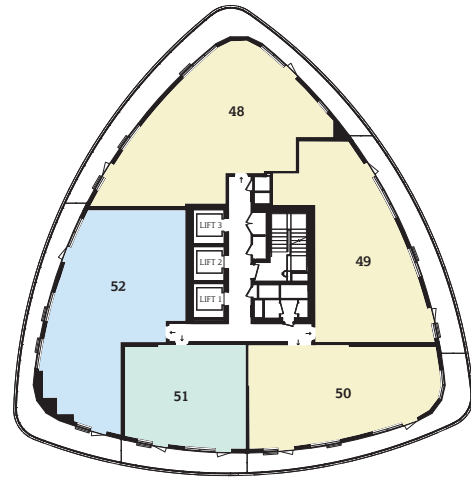
- Residents' only fitness suite
- Commercial / Retail
- Shared ownership
- One-bedroom apartments
- Two-bedroom apartments
- Three-bedroom apartments

Lombard Wharf floor plates

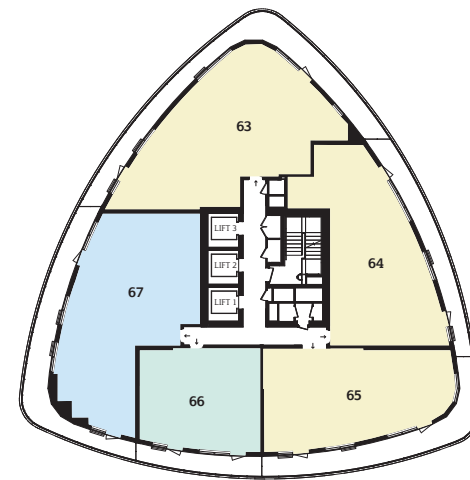
Floor 7



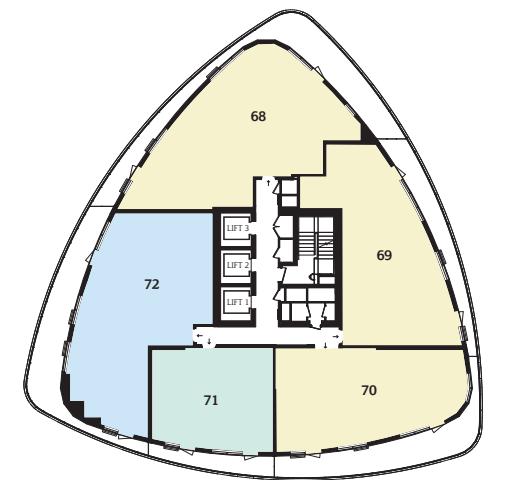
Floor 8



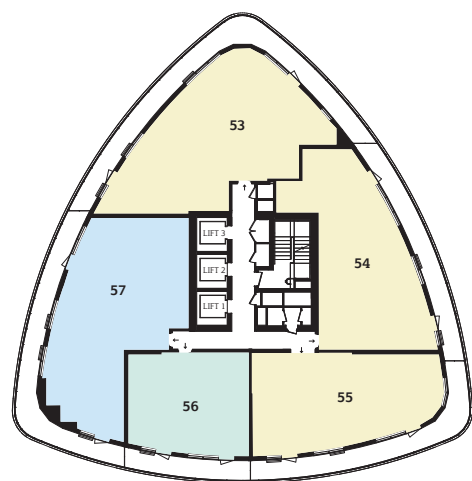
Floor 11



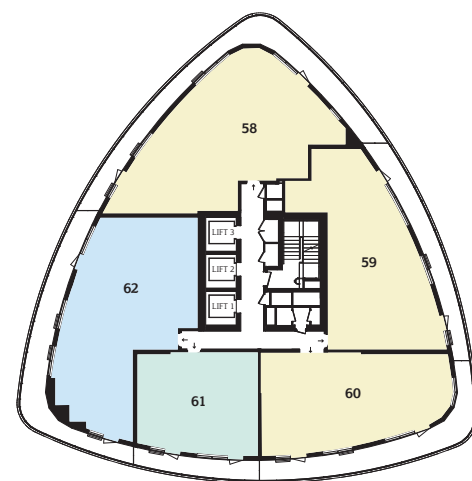
Floor 12



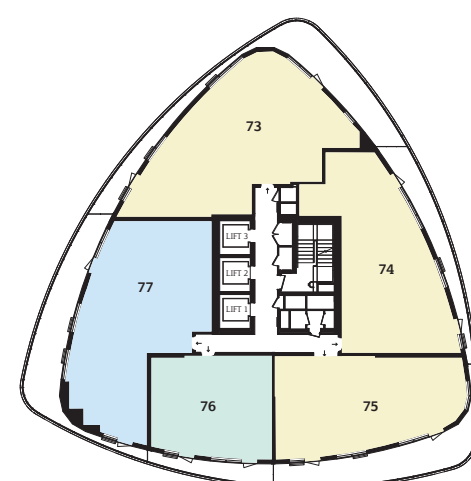
Floor 9



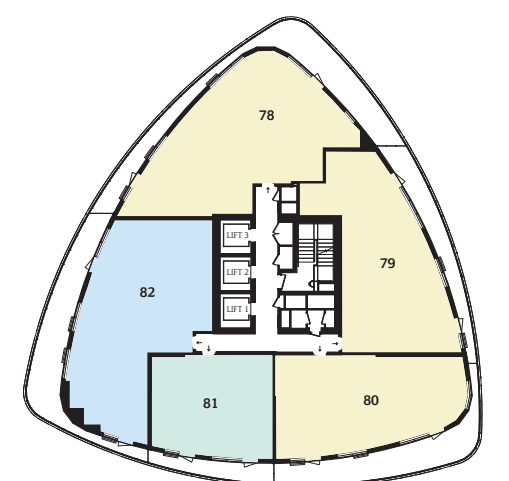
Floor 10



Floor 13



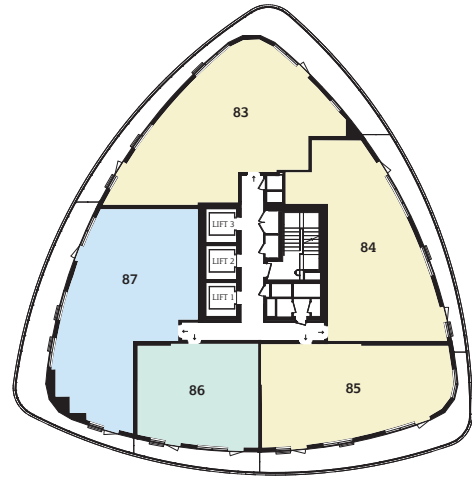
Floor 14



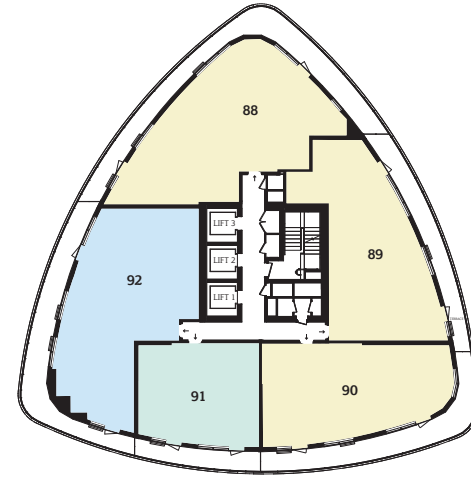
- One-bedroom apartments
- Two-bedroom apartments
- Three-bedroom apartments

Lombard Wharf floor plates

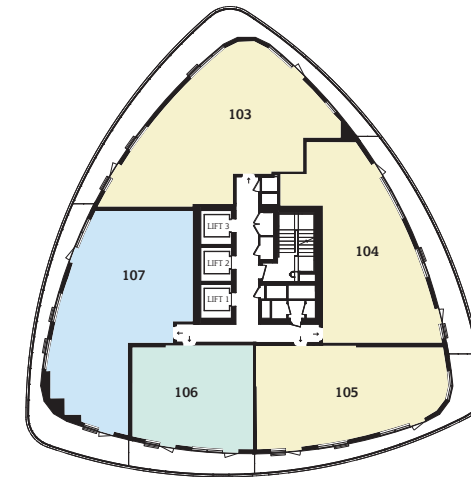
Floor 15



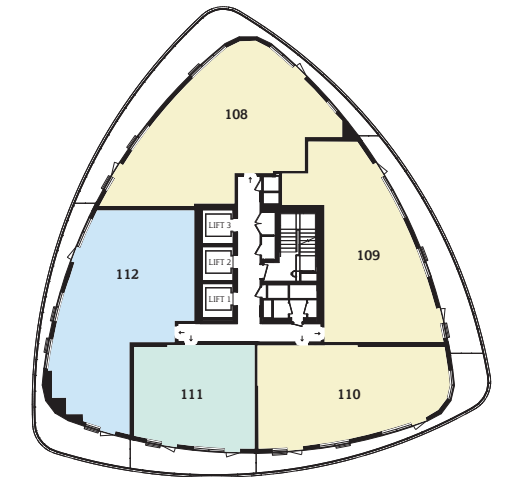
Floor 16



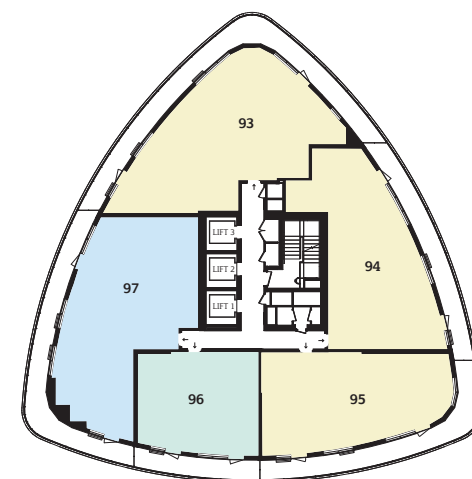
Floor 19



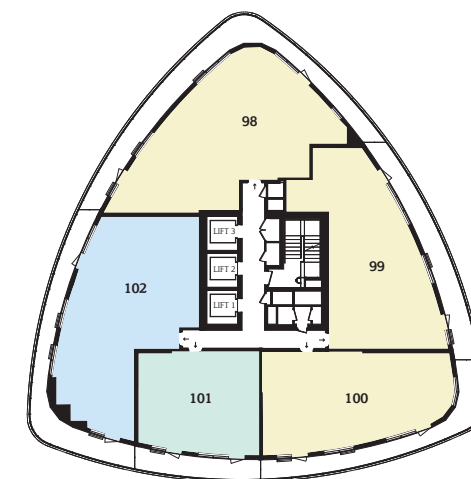
Floor 20



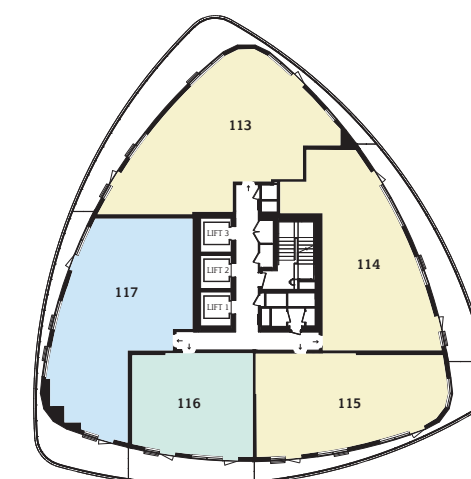
Floor 17



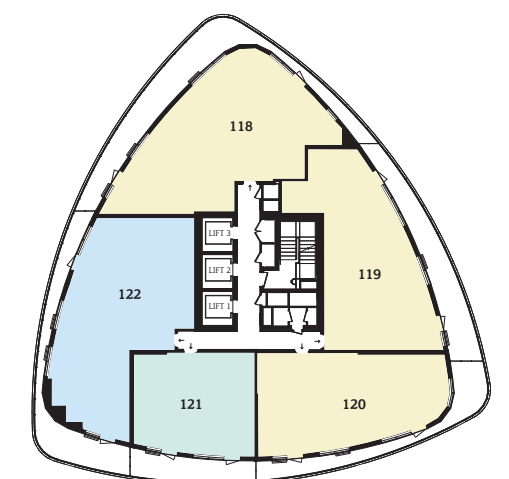
Floor 18



Floor 21



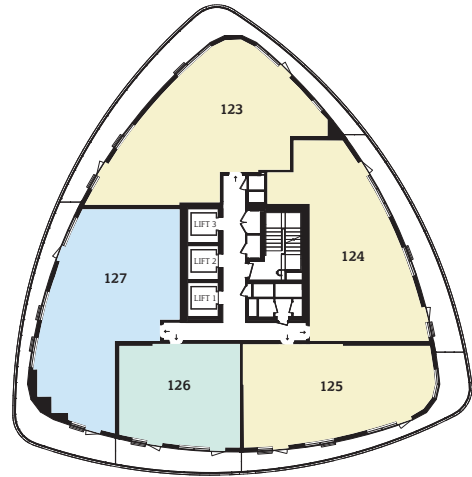
Floor 22



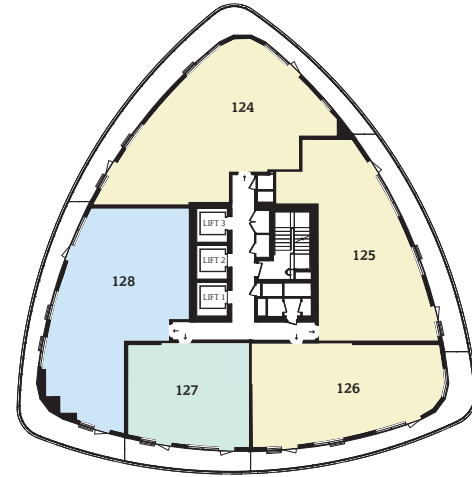
- One-bedroom apartments
- Two-bedroom apartments
- Three-bedroom apartments

Lombard Wharf floor plates

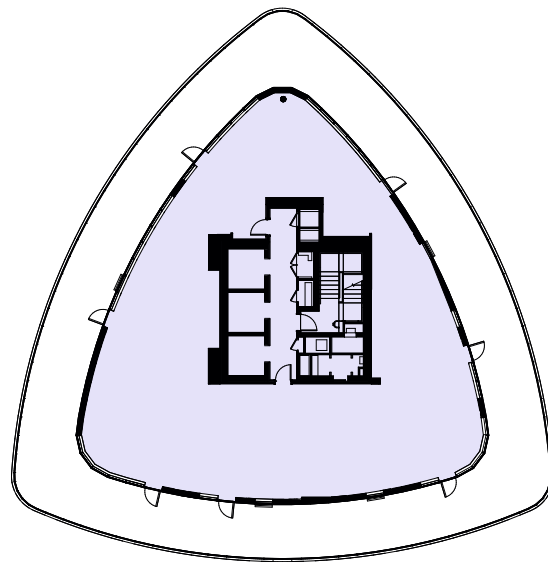
Floor 23



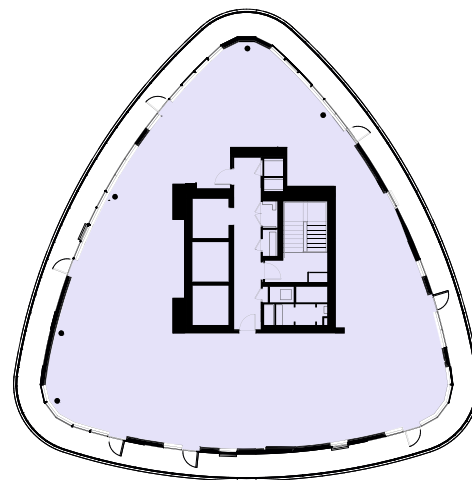
Floor 24



Floor 25



Floor 26



- One-bedroom apartments
- Three-bedroom apartments
- Two-bedroom apartments
- Three-bedroom penthouses

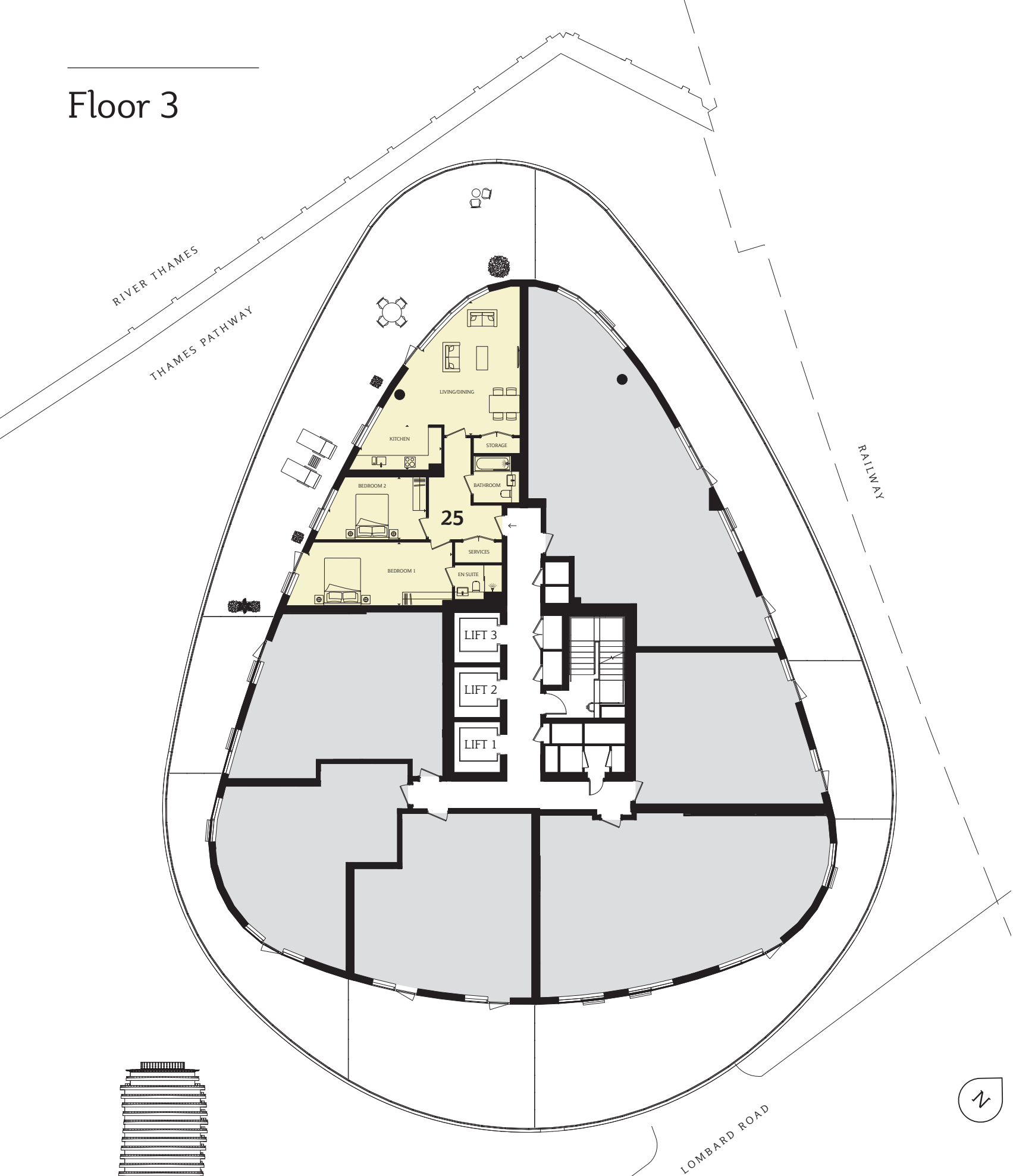
Penthouse layouts are indicative only and subject to change.

Residential entrance
and concierge \\\



Computer generated image is indicative only.

Floor 3



Plot 25

Living/Dining
19'4" x 14'1" (5900 x 4300mm)

Kitchen
11'10" x 6'7" (3600 x 2000mm)

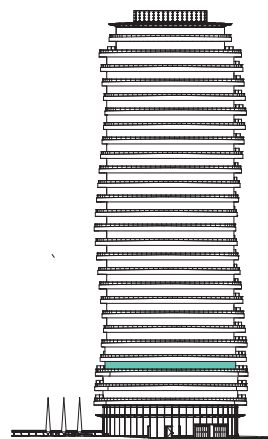
Bedroom 1
21'0" x 9'2" (6400 x 2800mm)

Bedroom 2
14'1" x 9'2" (4300 x 2800mm)

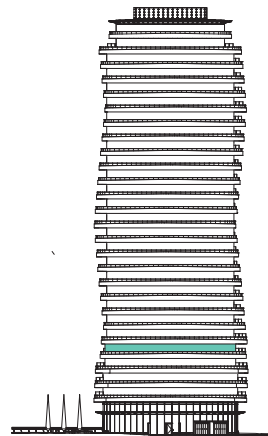
TOTAL AREA
985 sq ft (91.5 sq m)

Terrace
1060.87 sq ft (98.56 sq m)

- One-bedroom apartments
- Two-bedroom apartments
- Three-bedroom apartments
- Shared ownership



Floor 4



LOMBARD ROAD

- One-bedroom apartments
- Two-bedroom apartments
- Three-bedroom apartments
- Shared ownership



Plot 26

Living/Dining
22'8" x 15'9" (6900 x 4800mm)

Kitchen
10'2" x 8'2" (3100 x 2500mm)

Bedroom 1
13'1" x 10'6" (4000 x 3200mm)

Bedroom 2
17'5" x 9'0" (5300 x 2750mm)

TOTAL AREA
1058 sq ft (98.3 sq m)

Terrace
238.34 sq ft (22.14. sq m)

Plot 27

Living/Dining/Kitchen
22'8" x 10'10" (6900 x 3300mm)

Bedroom 1
10'10" x 10'10" (3300 x 3300mm)

TOTAL AREA
553 sq ft (51.4 sq m)

Terrace
169.19. sq ft (15.72. sq m)

Plot 29

Living/Dining/Kitchen
19'4" x 15'9" (5900 x 4800)

Bedroom 1
16'5" x 9'2" (5000 x 2800mm)

TOTAL AREA
617 sq ft (57.3 sq m)

Terrace
148.87 sq ft (13.83 sq m)

Plot 32

Living/Dining
19'4" x 14'1" (5900 x 4300mm)

Kitchen
11'10" x 6'7" (3600 x 2000mm)

Bedroom 1
21'0" x 9'2" (6400 x 2800mm)

Bedroom 2
14'1" x 9'2" (4300 x 2800mm)

TOTAL AREA
985 sq ft (91.5 sq m)

Terrace
479.73 sq ft (44.57. sq m)

Floor 5



- One-bedroom apartments
- Two-bedroom apartments
- Three-bedroom apartments

Plot 33

Living
17'9" x 11'6" (5400 x 3500mm)

Kitchen/Dining
17'1" x 13'9" (5200 x 4200mm)

Bedroom 1
19'0" x 9'2" (5800 x 2800mm)

Bedroom 2
14'9" x 9'0" (4500 x 2750mm)

TOTAL AREA
1040 sq ft (96.6 sq m)

Terrace
1256.26 sq ft (116.71. sq m)

Plot 34

Living/Dining/Kitchen
23'0" x 19'8" (7000 x 6000mm)

Bedroom 1
12'2" x 10'10" (3700 x 3300mm)

Bedroom 2
10'10" x 9'10" (3300 x 3000mm)

TOTAL AREA
876 sq ft (81.4 sq m)

Terrace
429.05 sq ft (39.86 sq m)

Plot 35

Living/Dining/Kitchen
18'1" x 16'9" (5500 x 5100mm)

Bedroom 1
13'1" x 11'10" (4000 x 3600mm)

Bedroom 2
11'6" x 8'10" (3500 x 2700mm)

TOTAL AREA
771 sq ft (71.6 sq m)

Terrace
423.41 sq ft (39.34 sq m)

Plot 36

Living/Dining/Kitchen
22'0" x 15'9" (6700 x 4800mm)

Bedroom 1
13'1" x 9'2" (4000 x 2800mm)

TOTAL AREA
555 sq ft (51.6 sq m)

Terrace
284.18 sq ft (26.4 sq m)

Plot 37

Living/Dining/Kitchen
24'7" x 16'1" (7500 x 4900mm)

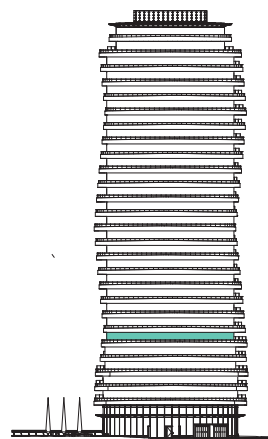
Bedroom 1
12'2" x 9'10" (3700 x 3000mm)

Bedroom 2
14'5" x 9'2" (4400 x 2800mm)

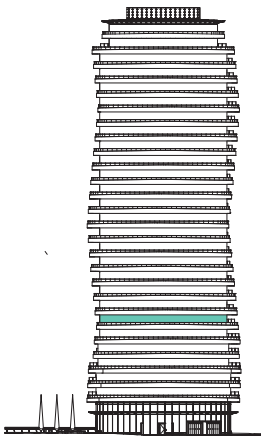
Bedroom 3
12'6" x 9'4" (3800 x 2850mm)

TOTAL AREA
1015 sq ft (94.3 sq m)

Terrace
413.02 sq ft (38.37 sq m)



Floor 6



- One-bedroom apartments
- Two-bedroom apartments
- Three-bedroom apartments

Plot 38

Living
17'9" x 11'6" (5400 x 3500mm)

Kitchen/Dining
17'1" x 13'9" (5200 x 4200mm)

Bedroom 1
19'0" x 9'2" (5800 x 2800mm)

Bedroom 2
14'9" x 9'0" (4500 x 2750mm)

TOTAL AREA
1040 sq ft (96.6 sq m)

Terrace
410.04 sq ft (38.09 sq m)

Plot 41

Living/Dining/Kitchen
22'0" x 15'9" (6700 x 4800mm)

Bedroom 1
13'1" x 9'2" (4000 x 2800mm)

TOTAL AREA
555 sq ft (51.6 sq m)

Terrace
144.46 sq ft (13.42 sq m)

Plot 39

Living/Dining/Kitchen
23'0" x 19'8" (7000 x 6000mm)

Bedroom 1
12'2" x 10'10" (3700 x 3300mm)

Bedroom 2
10'10" x 9'10" (3300 x 3000mm)

TOTAL AREA
876 sq ft (81.4 sq m)

Terrace
275.64 sq ft (25.61 sq m)

Plot 42

Living/Dining/Kitchen
24'7" x 16'1" (7500 x 4900mm)

Bedroom 1
12'2" x 9'10" (3700 x 3000mm)

Bedroom 2
14'5" x 9'2" (4400 x 2800mm)

Bedroom 3
12'6" x 9'4" (3800 x 2850mm)

TOTAL AREA
1015 sq ft (94.3 sq m)

Terrace
275.34 sq ft (25.58 sq m)

Plot 40

Living/Dining/Kitchen
18'1" x 16'9" (5500 x 5100mm)

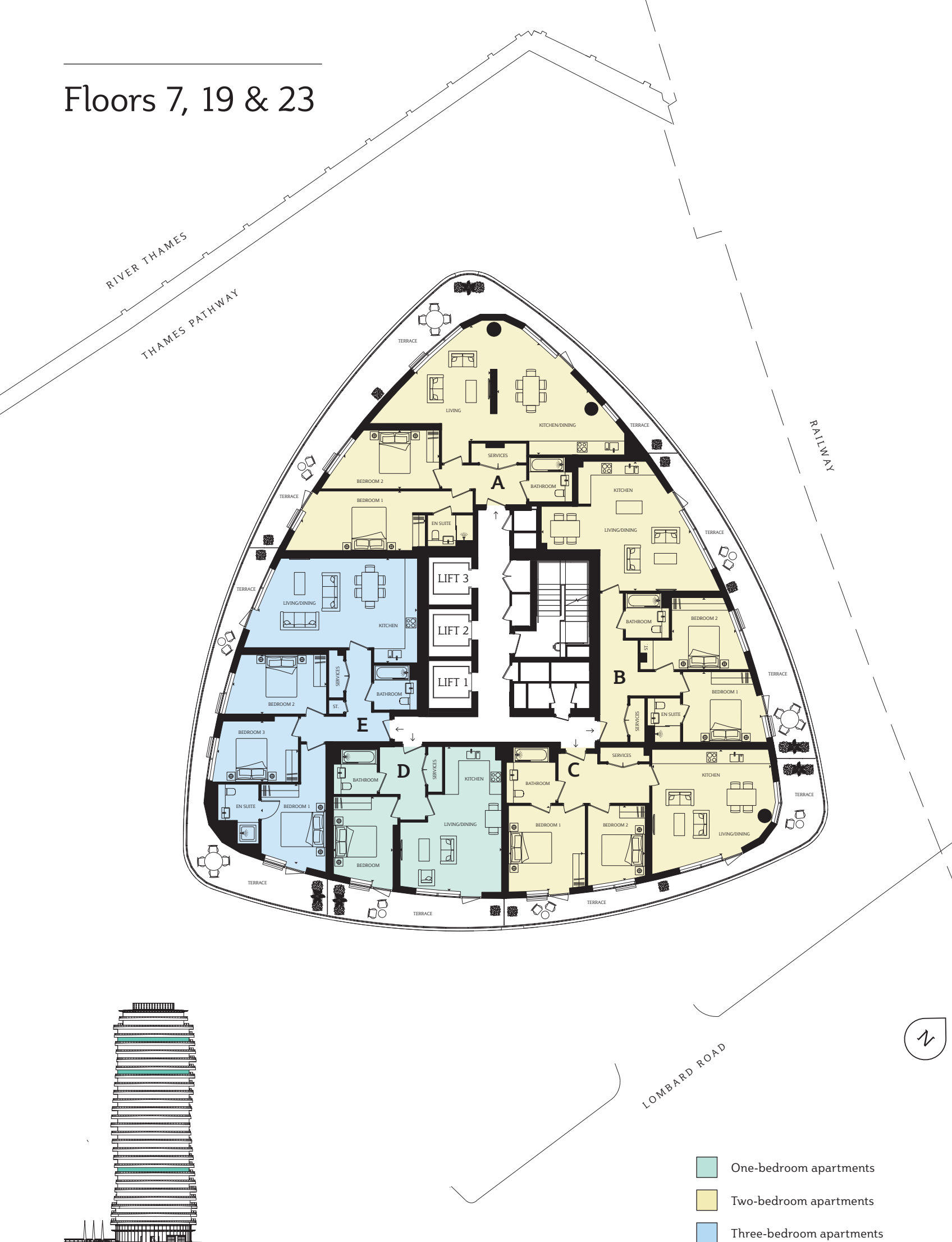
Bedroom 1
13'1" x 11'10" (4000 x 3600mm)

Bedroom 2
11'6" x 8'10" (3500 x 2700mm)

TOTAL AREA
771 sq ft (71.6 sq m)

Terrace
220.16 sq ft (20.45 sq m)

Floors 7, 19 & 23



- One-bedroom apartments
- Two-bedroom apartments
- Three-bedroom apartments

A

Plot number (floor)
43 (7), 103 (19), 123 (23)

Living
17'9" x 11'6" (5400 x 3500mm)

Kitchen/Dining
17'1" x 13'9" (5200 x 4200mm)

Bedroom 1
19'0" x 9'2" (5800 x 2800mm)

Bedroom 2
14'9" x 9'0" (4500 x 2750mm)

TOTAL AREA
1040 sq ft (96.6 sq m)

Terrace
409.02 sq ft (38 sq m)

D

Plot number (floor)
46 (7), 106 (19), 126 (23)

Living/Dining/Kitchen
22'0" x 15'9" (6700 x 4800mm)

Bedroom 1
13'1" x 9'2" (4000 x 2800mm)

TOTAL AREA
555 sq ft (51.6 sq m)

Terrace
135.09 sq ft (12.55 sq m)

B

Plot number (floor)
44 (7), 104 (19), 124 (23)

Living/Dining/Kitchen
23'0" x 19'8" (7000 x 6000mm)

Bedroom 1
12'2" x 10'10" (3700 x 3300mm)

Bedroom 2
10'10" x 9'10" (3300 x 3000mm)

TOTAL AREA
876 sq ft (81.4 sq m)

Terrace
256.14 sq ft (23.8 sq m)

E

Plot number (floor)
47 (7), 107 (19), 127 (23)

Living/Dining/Kitchen
24'7" x 16'1" (7500 x 4900mm)

Bedroom 1
12'2" x 9'10" (3700 x 3000mm)

Bedroom 2
14'5" x 9'2" (4400 x 2800mm)

Bedroom 3
12'6" x 9'4" (3800 x 2850mm)

TOTAL AREA
1015 sq ft (94.3 sq m)

Terrace
288.28 sq ft (26.76 sq m)

C

Plot number (floor)
45 (7), 105 (19), 125 (23)

Plot 45

Living/Dining/Kitchen
18'1" x 16'9" (5500 x 5100mm)

Bedroom 1
13'1" x 11'10" (4000 x 3600mm)

Bedroom 2
11'6" x 8'10" (3500 x 2700mm)

Plot 105, 125

Living/Dining/Kitchen
18'4" x 16'1" (5600 x 4900mm)

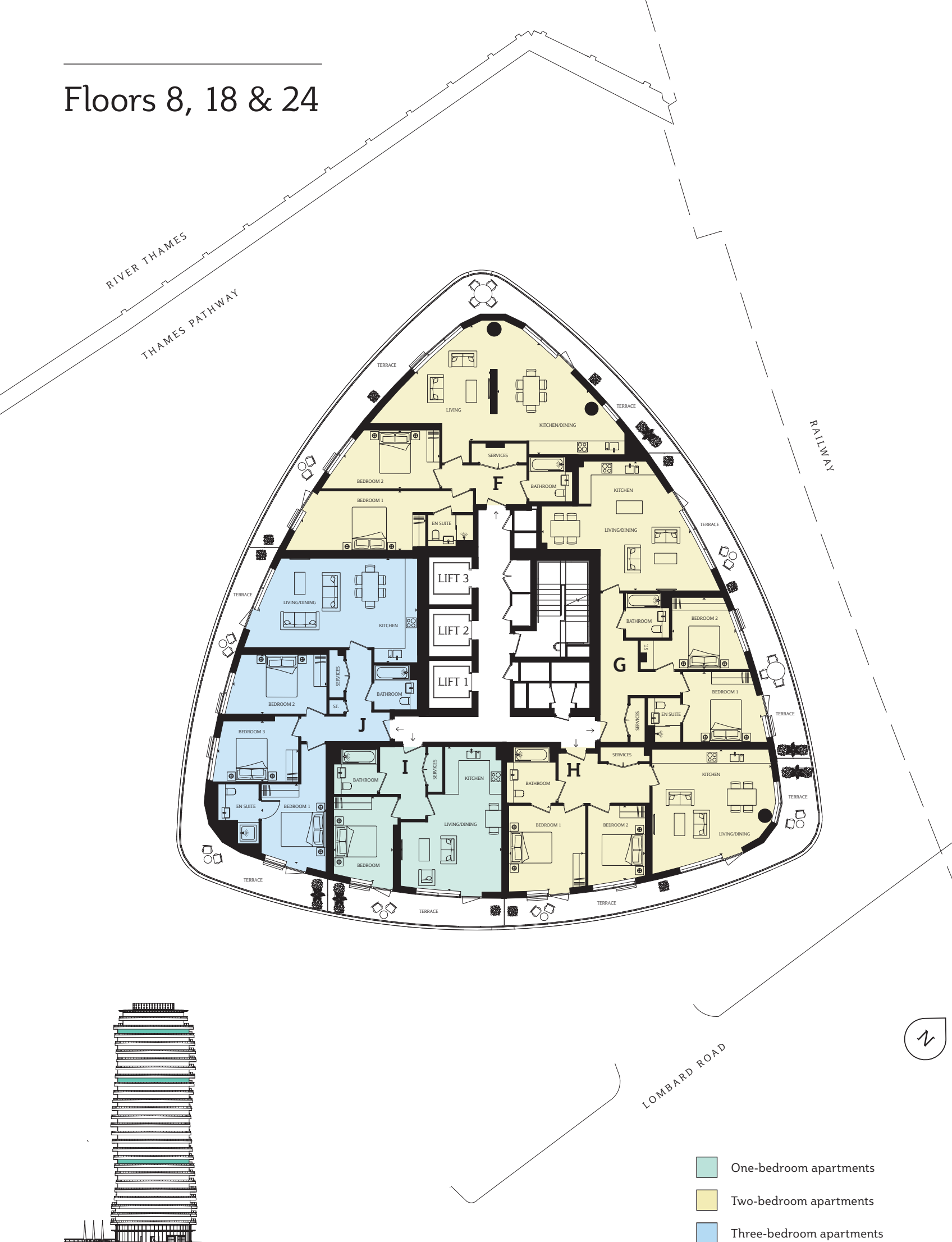
Bedroom 1
11'2" x 9'2" (3400 x 2800mm)

Bedroom 2
13'9" x 9'2" (4200 x 2800mm)

TOTAL AREA
771 sq ft (71.6 sq m)

Terrace
237.32 sq ft (22.05 sq m)

Floors 8, 18 & 24



F

Plot number (floor)
48 (8), 98 (18), 128 (24)

Living
17'9" x 11'6" (5400 x 3500mm)

Kitchen/Dining
17'1" x 13'9" (5200 x 4200mm)

Bedroom 1
19'0" x 9'2" (5800 x 2800mm)

Bedroom 2
14'9" x 9'0" (4500 x 2750mm)

TOTAL AREA
1040 sq ft (96.6 sq m)

Terrace
407.75 sq ft (37.88 sq m)

I

Plot number (floor)
51 (8), 101 (18), 131 (24)

Living/Dining/Kitchen
22'0" x 15'9" (6700 x 4800mm)

Bedroom 1
13'1" x 9'2" (4000 x 2800mm)

TOTAL AREA
555 sq ft (51.6 sq m)

Terrace
126.6 sq ft (11.76 sq m)

G

Plot number (floor)
49 (8), 99 (18), 129 (24)

Living/Dining/Kitchen
23'0" x 19'8" (7000 x 6000mm)

Bedroom 1
12'2" x 10'10" (3700 x 3300mm)

Bedroom 2
10'10" x 9'10" (3300 x 3000mm)

TOTAL AREA
876 sq ft (81.4 sq m)

Terrace
238.38 sq ft (22.15 sq m)

J

Plot number (floor)
52 (8), 102 (18), 132 (24)

Living/Dining/Kitchen
24'7" x 16'1" (7500 x 4900mm)

Bedroom 1
12'2" x 9'10" (3700 x 3000mm)

Bedroom 2
14'5" x 9'2" (4400 x 2800mm)

Bedroom 3
12'6" x 9'4" (3800 x 2850mm)

TOTAL AREA
1015 sq ft (94.3 sq m)

Terrace
300.26 sq ft (27.89 sq m)

H

Plot number (floor)
50 (8), 100 (18), 130 (24)

Plot 50
Living/Dining/Kitchen
18'1" x 16'9" (5500 x 5100mm)

Bedroom 1
13'1" x 11'10" (4000 x 3600mm)

Bedroom 2
11'6" x 8'10" (3500 x 2700mm)

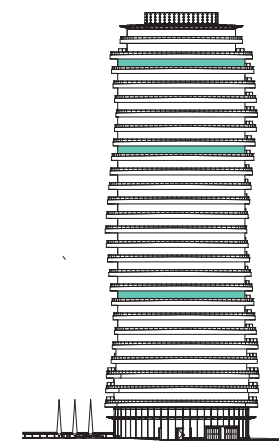
Plot 100, 130
Living/Dining/Kitchen
18'4" x 16'1" (5600 x 4900mm)

Bedroom 1
11'2" x 9'2" (3400 x 2800mm)

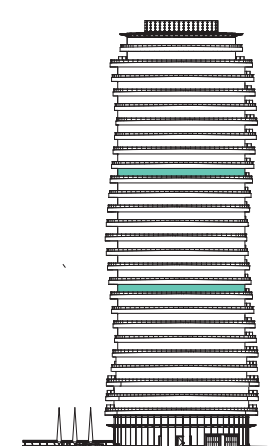
Bedroom 2
13'9" x 9'2" (4200 x 2800mm)

TOTAL AREA
771 sq ft (71.6 sq m)

Terrace
253.04 sq ft (23.51 sq m)



Floors 9 & 17



- One-bedroom apartments
- Two-bedroom apartments
- Three-bedroom apartments

K

Plot number (floor)
53 (9), 93 (17)

Living
17'9" x 11'6" (5400 x 3500mm)

Kitchen/Dining
17'1" x 13'9" (5200 x 4200mm)

Bedroom 1
19'0" x 9'2" (5800 x 2800mm)

Bedroom 2
14'9" x 9'0" (4500 x 2750mm)

TOTAL AREA
1040 sq ft (96.6 sq m)

Terrace
406.28 sq ft (37.88 sq m)

N

Plot number (floor)
56 (9), 96 (17)

Living/Dining/Kitchen
22'0" x 15'9" (6700 x 4800mm)

Bedroom 1
13'1" x 9'2" (4000 x 2800mm)

TOTAL AREA
555 sq ft (51.6 sq m)

Terrace
118.97 sq ft (11.05 sq m)

L

Plot number (floor)
54 (9), 94 (17)

Living/Dining/Kitchen
23'0" x 19'8" (7000 x 6000mm)

Bedroom 1
12'2" x 10'10" (3700 x 3300mm)

Bedroom 2
10'10" x 9'10" (3300 x 3000mm)

TOTAL AREA
876 sq ft (81.4 sq m)

Terrace
222.54 sq ft (20.68 sq m)

O

Plot number (floor)
57 (9), 97 (17)

Living/Dining/Kitchen
24'7" x 16'1" (7500 x 4900mm)

Bedroom 1
12'2" x 9'10" (3700 x 3000mm)

Bedroom 2
14'5" x 9'2" (4400 x 2800mm)

Bedroom 3
12'6" x 9'4" (3800 x 2850mm)

TOTAL AREA
1015 sq ft (94.3 sq m)

Terrace
300.26 sq ft (27.89 sq m)

M

Plot number (floor)
55 (9), 95 (17)

Plot 55

Living/Dining/Kitchen
18'1" x 16'9" (5500 x 5100mm)

Bedroom 1
13'1" x 11'10" (4000 x 3600mm)

Bedroom 2
11'6" x 8'10" (3500 x 2700mm)

Plot 95

Living/Dining/Kitchen
18'4" x 16'1" (5600 x 4900mm)

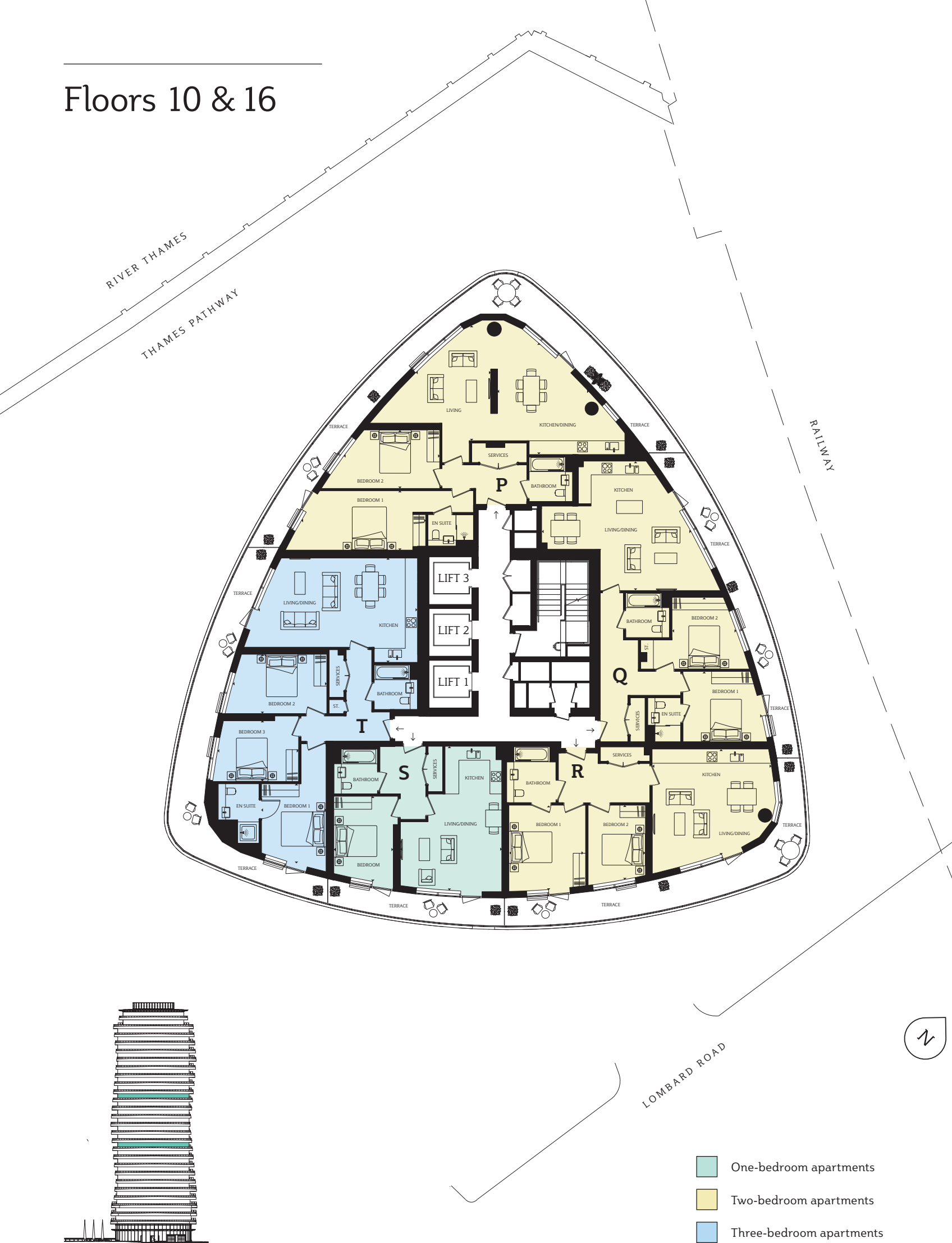
Bedroom 1
11'2" x 9'2" (3400 x 2800mm)

Bedroom 2
13'9" x 9'2" (4200 x 2800mm)

TOTAL AREA
771 sq ft (71.6 sq m)

Terrace
267.14 sq ft (24.82 sq m)

Floors 10 & 16



P

Plot number (floor)
58 (10), 88 (16)

Living
17'9" x 11'6" (5400 x 3500mm)

Kitchen/Dining
17'1" x 13'9" (5200 x 4200mm)

Bedroom 1
19'0" x 9'2" (5800 x 2800mm)

Bedroom 2
14'9" x 9'0" (4500 x 2750mm)

TOTAL AREA
1040 sq ft (96.6 sq m)

Terrace
404.58 sq ft (37.59 sq m)

S

Plot number (floor)
61 (9), 91 (17)

Living/Dining/Kitchen
22'0" x 15'9" (6700 x 4800mm)

Bedroom 1
13'1" x 9'2" (4000 x 2800mm)

TOTAL AREA
555 sq ft (51.6 sq m)

Terrace
112.2 sq ft (10.42 sq m)

Q

Plot number (floor)
59 (10), 89 (16)

Living/Dining/Kitchen
23'0" x 19'8" (7000 x 6000mm)

Bedroom 1
12'2" x 10'10" (3700 x 3300mm)

Bedroom 2
10'10" x 9'10" (3300 x 3000mm)

TOTAL AREA
876 sq ft (81.4 sq m)

Terrace
208.54 sq ft (19.37 sq m)

T

Plot number (floor)
62 (10), 92 (16)

Living/Dining/Kitchen
24'7" x 16'1" (7500 x 4900mm)

Bedroom 1
12'2" x 9'10" (3700 x 3000mm)

Bedroom 2
14'5" x 9'2" (4400 x 2800mm)

Bedroom 3
12'6" x 9'4" (3800 x 2850mm)

TOTAL AREA
1015 sq ft (94.3 sq m)

Terrace
321.31 sq ft (29.85 sq m)

R

Plot number (floor)
60 (10), 90 (16)

Plot 60
Living/Dining/Kitchen
18'1" x 16'9" (5500 x 5100mm)

Bedroom 1
13'1" x 11'10" (4000 x 3600mm)

Bedroom 2
11'6" x 8'10" (3500 x 2700mm)

Plot 90
Living/Dining/Kitchen
18'4" x 16'1" (5600 x 4900mm)

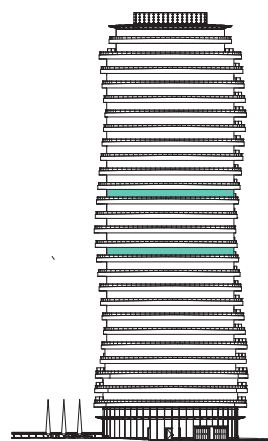
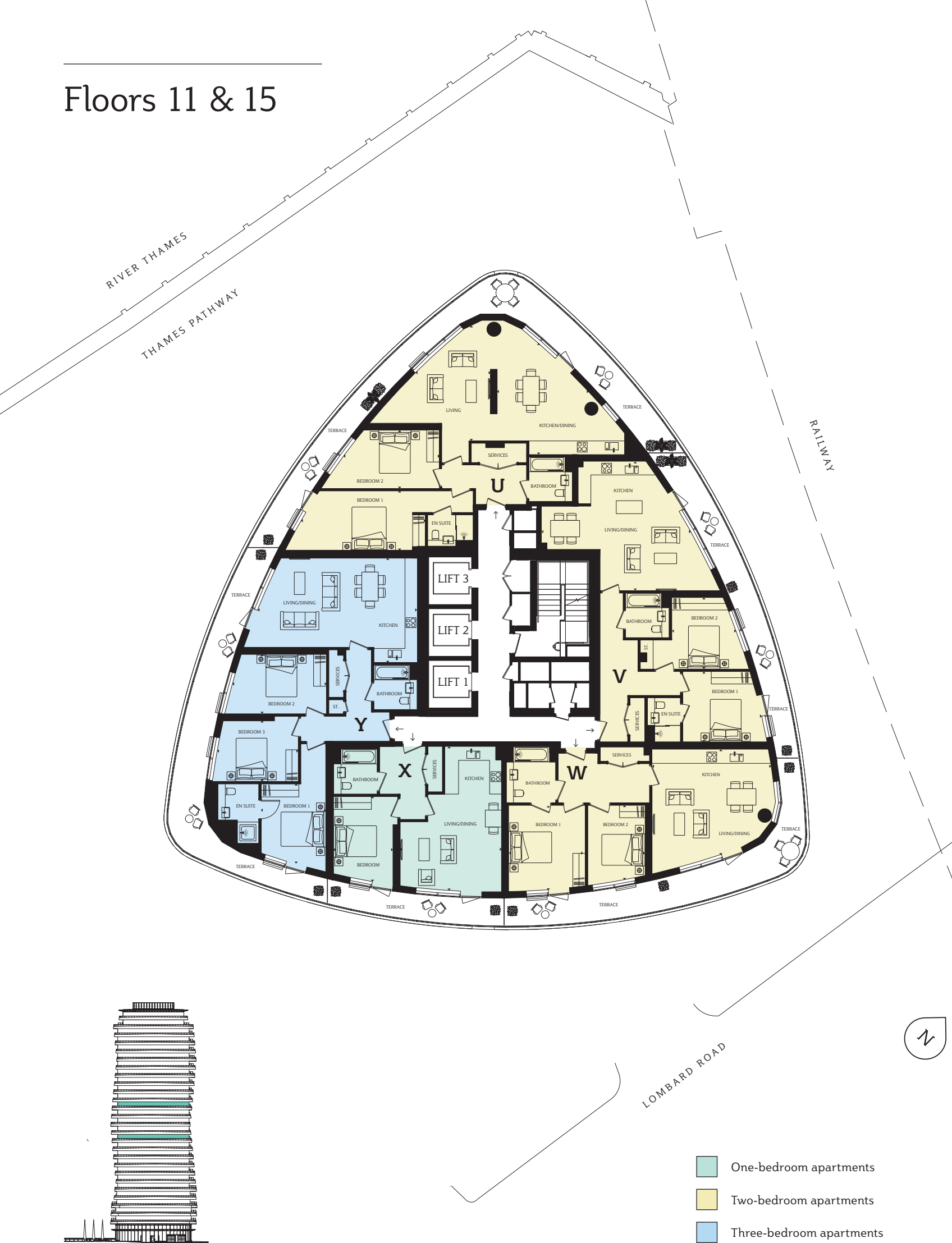
Bedroom 1
11'2" x 9'2" (3400 x 2800mm)

Bedroom 2
13'9" x 9'2" (4200 x 2800mm)

TOTAL AREA
771 sq ft (71.6 sq m)

Terrace
279.71 sq ft (25.99 sq m)

Floors 11 & 15



U

Plot number (floor)
63 (11), 83 (15)

Living
17'9" x 11'6" (5400 x 3500mm)

Kitchen/Dining
17'1" x 13'9" (5200 x 4200mm)

Bedroom 1
19'0" x 9'2" (5800 x 2800mm)

Bedroom 2
14'9" x 9'0" (4500 x 2750mm)

TOTAL AREA
1040 sq ft (96.6 sq m)

Terrace
402.71 sq ft (37.41 sq m)

X

Plot number (floor)
66 (11), 86 (15)

Living/Dining/Kitchen
22'0" x 15'9" (6700 x 4800mm)

Bedroom 1
13'1" x 9'2" (4000 x 2800mm)

TOTAL AREA
555 sq ft (51.6 sq m)

Terrace
106.29 sq ft (9.87 sq m)

V

Plot number (floor)
64 (11), 84 (15)

Living/Dining/Kitchen
23'0" x 19'8" (7000 x 6000mm)

Bedroom 1
12'2" x 10'10" (3700 x 3300mm)

Bedroom 2
10'10" x 9'10" (3300 x 3000mm)

TOTAL AREA
876 sq ft (81.4 sq m)

Terrace
196.25 sq ft (18.23 sq m)

Y

Plot number (floor)
67 (11), 87 (15)

Living/Dining/Kitchen
24'7" x 16'1" (7500 x 4900mm)

Bedroom 1
12'2" x 9'10" (3700 x 3000mm)

Bedroom 2
14'5" x 9'2" (4400 x 2800mm)

Bedroom 3
12'6" x 9'4" (3800 x 2850mm)

TOTAL AREA
1015 sq ft (94.3 sq m)

Terrace
330.4 sq ft (30.7 sq m)

W

Plot number (floor)
65 (11), 85 (15)

Plot 65

Living/Dining/Kitchen
18'1" x 16'9" (5500 x 5100mm)

Bedroom 1
13'1" x 11'10" (4000 x 3600mm)

Bedroom 2
11'6" x 8'10" (3500 x 2700mm)

TOTAL AREA
771 sq ft (71.6 sq m)

Terrace
289.58 sq ft (26.9 sq m)

Plot 85

Living/Dining/Kitchen
18'4" x 16'1" (5600 x 4900mm)

Bedroom 1
11'2" x 9'2" (3400 x 2800mm)

Bedroom 2
13'9" x 9'2" (4200 x 2800mm)

TOTAL AREA
773 sq ft (71.8 sq m)

Terrace
206.01 sq ft (19.14 sq m)

Floors 12 & 14



Z

Plot number (floor)
68 (12), 78 (14)

Living
17'9" x 11'6" (5400 x 3500mm)

Kitchen/Dining
17'1" x 13'9" (5200 x 4200mm)

Bedroom 1
19'0" x 9'2" (5800 x 2800mm)

Bedroom 2
14'9" x 9'0" (4500 x 2750mm)

TOTAL AREA
1040 sq ft (96.6 sq m)

Terrace
400.66 sq ft (37.22 sq m)

Cc

Plot number (floor)
71 (12), 81 (14)

Living/Dining/Kitchen
22'0" x 15'9" (6700 x 4800mm)

Bedroom 1
13'1" x 9'2" (4000 x 2800mm)

TOTAL AREA
555 sq ft (51.6 sq m)

Terrace
101.24 sq ft (9.41 sq m)

Aa

Plot number (floor)
69 (12), 79 (14)

Living/Dining/Kitchen
23'0" x 19'8" (7000 x 6000mm)

Bedroom 1
12'2" x 10'10" (3700 x 3300mm)

Bedroom 2
10'10" x 9'10" (3300 x 3000mm)

TOTAL AREA
876 sq ft (81.4 sq m)

Terrace
185.69 sq ft (17.25 sq m)

Dd

Plot number (floor)
72 (12), 82 (14)

Living/Dining/Kitchen
24'7" x 16'1" (7500 x 4900mm)

Bedroom 1
12'2" x 9'10" (3700 x 3000mm)

Bedroom 2
14'5" x 9'2" (4400 x 2800mm)

Bedroom 3
12'6" x 9'4" (3800 x 2850mm)

TOTAL AREA
1015 sq ft (94.3 sq m)

Terrace
337.32 sq ft (31.34 sq m)

Bb

Plot number (floor)
70 (12), 80 (14)

Plot 70

Living/Dining/Kitchen
18'1" x 16'9" (5500 x 5100mm)

Bedroom 1
13'1" x 11'10" (4000 x 3600mm)

Bedroom 2
11'6" x 8'10" (3500 x 2700mm)

TOTAL AREA
771 sq ft (71.6 sq m)

Terrace
300.43 sq ft (27.91 sq m)

Plot 80

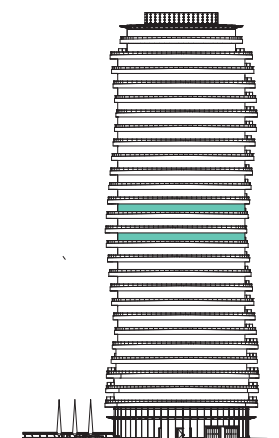
Living/Dining/Kitchen
18'4" x 16'1" (5600 x 4900mm)

Bedroom 1
11'2" x 9'2" (3400 x 2800mm)

Bedroom 2
13'9" x 9'2" (4200 x 2800mm)

TOTAL AREA
773 sq ft (71.8 sq m)

Terrace
206.01 sq ft (19.14 sq m)



Floor 13



Plot 73

Living
17'9" x 11'6" (5400 x 3500mm)

Kitchen/Dining
17'1" x 13'9" (5200 x 4200mm)

Bedroom 1
19'0" x 9'2" (5800 x 2800mm)

Bedroom 2
14'9" x 9'0" (4500 x 2750mm)

TOTAL AREA
1040 sq ft (96.6 sq m)

Terrace
398.93 sq ft (37.06 sq m)

Plot 74

Living/Dining/Kitchen
23'0" x 19'8" (7000 x 6000mm)

Bedroom 1
12'2" x 10'10" (3700 x 3300mm)

Bedroom 2
10'10" x 9'10" (3300 x 3000mm)

TOTAL AREA
876 sq ft (81.4 sq m)

Terrace
178.87 sq ft (16.62 sq m)

Plot 75

Living/Dining/Kitchen
18'1" x 16'9" (5500 x 5100mm)

Bedroom 1
13'1" x 11'10" (4000 x 3600mm)

Bedroom 2
11'6" x 8'10" (3500 x 2700mm)

TOTAL AREA
771 sq ft (71.6 sq m)

Terrace
306.67 sq ft (28.49 sq m)

Plot 76

Living/Dining/Kitchen
22'0" x 15'9" (6700 x 4800mm)

Bedroom 1
13'1" x 9'2" (4000 x 2800mm)

TOTAL AREA
555 sq ft (51.6 sq m)

Terrace
98.02 sq ft (9.11 sq m)

Plot 77

Living/Dining/Kitchen
24'7" x 16'1" (7500 x 4900mm)

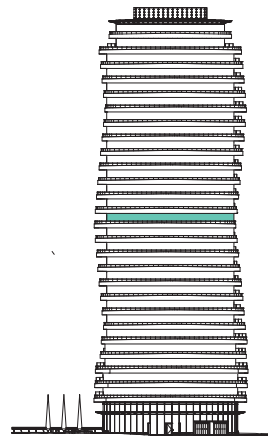
Bedroom 1
12'2" x 9'10" (3700 x 3000mm)

Bedroom 2
14'5" x 9'2" (4400 x 2800mm)

Bedroom 3
12'6" x 9'4" (3800 x 2850mm)

TOTAL AREA
1015 sq ft (94.3 sq m)

Terrace
343.98 sq ft (31.96 sq m)

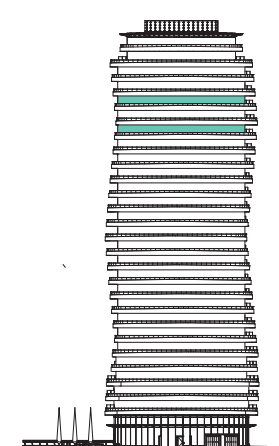


- One-bedroom apartments
- Two-bedroom apartments
- Three-bedroom apartments

Floors 20 & 22



- One-bedroom apartments
- Two-bedroom apartments
- Three-bedroom apartments



Ee

Plot number (floor)
108 (20), 118 (22)

Living
17'9" x 11'6" (5400 x 3500mm)

Kitchen/Dining
17'1" x 13'9" (5200 x 4200mm)

Bedroom 1
19'0" x 9'2" (5800 x 2800mm)

Bedroom 2
14'9" x 9'0" (4500 x 2750mm)

TOTAL AREA
1040 sq ft (96.6 sq m)

Terrace
410.03 sq ft (38.09 sq m)

Ff

Plot number (floor)
109 (20), 119 (22)

Living/Dining/Kitchen
23'0" x 19'8" (7000 x 6000mm)

Bedroom 1
12'2" x 10'10" (3700 x 3300mm)

Bedroom 2
10'10" x 9'10" (3300 x 3000mm)

TOTAL AREA
876 sq ft (81.4 sq m)

Terrace
275.67 sq ft (25.61 sq m)

Gg

Plot number (floor)
110 (20), 120 (22)

Living/Dining/Kitchen
18'4" x 16'1" (5600 x 4900mm)

Bedroom 1
11'2" x 9'2" (3400 x 2800mm)

Bedroom 2
13'9" x 9'2" (4200 x 2800mm)

TOTAL AREA
773 sq ft (71.8 sq m)

Terrace
220.1 sq ft (20.45 sq m)

Hh

Plot number (floor)
111 (20), 121 (22)

Living/Dining/Kitchen
22'0" x 15'9" (6700 x 4800mm)

Bedroom 1
13'1" x 9'2" (4000 x 2800mm)

TOTAL AREA
555 sq ft (51.6 sq m)

Terrace
144.45 sq ft (13.42 sq m)

Ii

Plot number (floor)
112 (20), 122 (22)

Living/Dining/Kitchen
24'7" x 16'1" (7500 x 4900mm)

Bedroom 1
12'2" x 9'10" (3700 x 3000mm)

Bedroom 2
14'5" x 9'2" (4400 x 2800mm)

Bedroom 3
12'6" x 9'4" (3800 x 2850mm)

TOTAL AREA
1015 sq ft (94.3 sq m)

Terrace
275.34 sq ft (25.58 sq m)

Floor 21



- One-bedroom apartments
- Two-bedroom apartments
- Three-bedroom apartments

Plot 113

Living
17'9" x 11'6" (5400 x 3500mm)

Kitchen/Dining
17'1" x 13'9" (5200 x 4200mm)

Bedroom 1
19'0" x 9'2" (5800 x 2800mm)

Bedroom 2
14'9" x 9'0" (4500 x 2750mm)

TOTAL AREA
1040 sq ft (96.6 sq m)

Terrace
409.64 sq ft (38.06 sq m)

Plot 114

Living/Dining/Kitchen
23'0" x 19'8" (7000 x 6000mm)

Bedroom 1
12'2" x 10'10" (3700 x 3300mm)

Bedroom 2
10'10" x 9'10" (3300 x 3000mm)

TOTAL AREA
876 sq ft (81.4 sq m)

Terrace
291.45 sq ft (27.08 sq m)

Plot 115

Living/Dining/Kitchen
18'4" x 16'1" (5600 x 4900mm)

Bedroom 1
11'2" x 9'2" (3400 x 2800mm)

Bedroom 2
13'9" x 9'2" (4200 x 2800mm)

TOTAL AREA
773. sq ft (71.8 sq m)

Terrace
206.01 sq ft (19.14 sq m)

Plot 116

Living/Dining/Kitchen
22'0" x 15'9" (6700 x 4800mm)

Bedroom 1
13'1" x 9'2" (4000 x 2800mm)

TOTAL AREA
555 sq ft (51.6 sq m)

Terrace
152.04 sq ft (14.13 sq m)

Plot 117

Living/Dining/Kitchen
24'7" x 16'1" (7500 x 4900mm)

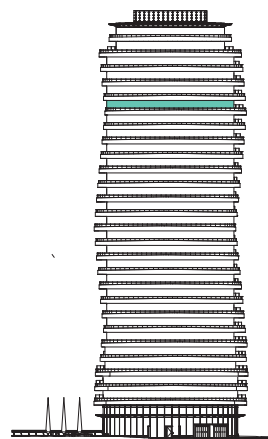
Bedroom 1
12'2" x 9'10" (3700 x 3000mm)

Bedroom 2
14'5" x 9'2" (4400 x 2800mm)

Bedroom 3
12'6" x 9'4" (3800 x 2850mm)

TOTAL AREA
1015 sq ft (94.3 sq m)

Terrace
264.06 sq ft (24.53 sq m)





Computer generated image is indicative only.

Specification

General	Flooring	Bathroom
Polished chrome door furniture	Engineered wood flooring throughout living areas	Ceramic tiling to bathroom walls and floor
Fitted wardrobes to bedroom with sliding doors and soft closers (master bedroom only)	Porcelain tiling to kitchen floor	Kaldewei bath to main bathroom with Grohe thermostat and shower head
Underfloor heating throughout with thermostat sensor	Carpets to all bedrooms	Grohe thermostat to en suite shower with Grohe shower head
Comfort cooling	Kitchen	Duravit semi-recessed basin with Grohe mixer tap
Downlighters	German-fitted handleless kitchen	Grohe cistern with Grohe dual flush wall plate
Touchscreen door entry system to main building entrance	Silestone upstands and full height glass splashbacks	Merlyn screen to main bathroom bath and en suite shower
	Carron Phoenix Zeta 1.5 bowl underslung sink	Walk-in shower to en suite
	Grohe mixer tap	Mobiform vanity unit
	AEG multifunction oven, induction hob, ceiling hood or integrated telescopic hood, fridge/freezer, dishwasher, warming drawer, wine cooler and freestanding washer/dryer	Shaver sockets to main bathroom and en suite in vanity unit
	Built in combi microwave or wall-mounted microwave to two and three bedroom apartments	Silestone sink surround with silestone upstand
		Delonghi chrome finish heated towel rail

FIND YOUR OWN
PIECE OF LONDON

+ 4 4 (0) 8 4 4 8 1 1 4 3 2 1
BARRATTLONDON.COM / LOMBARDWHARF

Computer generated images, maps and development layouts are intended for illustrative purposes and should be treated as general guidance only. The features, designs, materials and visual depictions of and in our show homes and in our show home photography and computer generated images must be treated as general illustration and guidance. Images may also include upgrades which are available at extra cost. Furniture and furnishings are not included. Fixtures, fittings and specification may be subject to change as necessary and without notice and their accuracy or completeness is not guaranteed. Nor are they intended to form part of any contract or a warranty unless specifically incorporated into the contract. Please ask your sales advisor for the current specification and for details of the treatments specified for individual plots. Individual features such as windows, brick and other materials' colours may vary, as may drainage, heating and electrical layouts. Floorplans are intended to give a general indication of the proposed floor layout only. The dimensions are accurate to within + or - 50mm. Dimensions should not be used for carpet or flooring sizes, appliance spaces or items of furniture. Development layouts and landscaping, specification, dimensions and computer generated images are not intended to form part of any contract or warranty unless specifically incorporated in writing into the contract. The proposed Diamond Jubilee Footbridge currently has planning permission and is awaiting funding. Barratt London will be providing the footings for the bridge when its construction begins. The development name; Lombard Wharf is for marketing purposes only and may not be the designated postal address, which may be determined by The Post Office. All information in this document is correct to the best of our knowledge at the time of going to print February 2015.

