



 RAMPTON
BASELEY

Westover Road | SW18

Freehold



Description

A fantastic semi-detached, six-bedroom family house with a substantial south facing garden measuring approximately 78 feet. The property is superbly presented and split over four floors with a tremendous sense of light and space throughout.

On the ground floor the entrance hall opens into a double reception room benefitting from a large bay window and feature fireplace. To the rear of the reception room, double doors open into a light and spacious kitchen/dining room with plenty of space for entertaining as well as everyday family living.

The kitchen itself is beautifully finished with plenty of wall and base units, integrated appliances and a central island/breakfast bar.

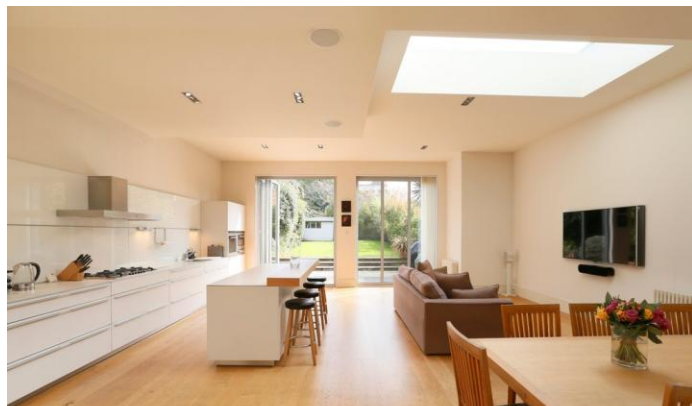
Concertina doors open from the kitchen/dining room onto a patio area, with steps leading up to an immaculate lawn bordered with plants and trees. A family/media room can be found in the basement level along with a utility room, wine cellar and bedroom with en-suite shower room.

The master bedroom can be found on the first floor, along with a study, family bathroom, fully fitted dressing room and luxurious en-suite, with dual sinks and a large walk in shower. Four further double bedrooms, two with built in cabinetry, a second family bathroom and shower room can be found on the top floor.



- Six double bedrooms
- Double reception room
- Kitchen/dining room
- Media/family room
- Three bathrooms
- Large south facing garden
- Wine cellar

Westover Road is a pretty tree lined, popular residential street close to the open spaces of Wandsworth Common. It is well placed for the local amenities and more extensive shopping is available at The Southside Centre. Transport links are good with Wandsworth Town and Clapham Junction stations nearby, providing services to Victoria and Waterloo. Furthermore, the area as a whole is renowned for its excellent choice of private and state schools, subject to catchment and entrance each year.

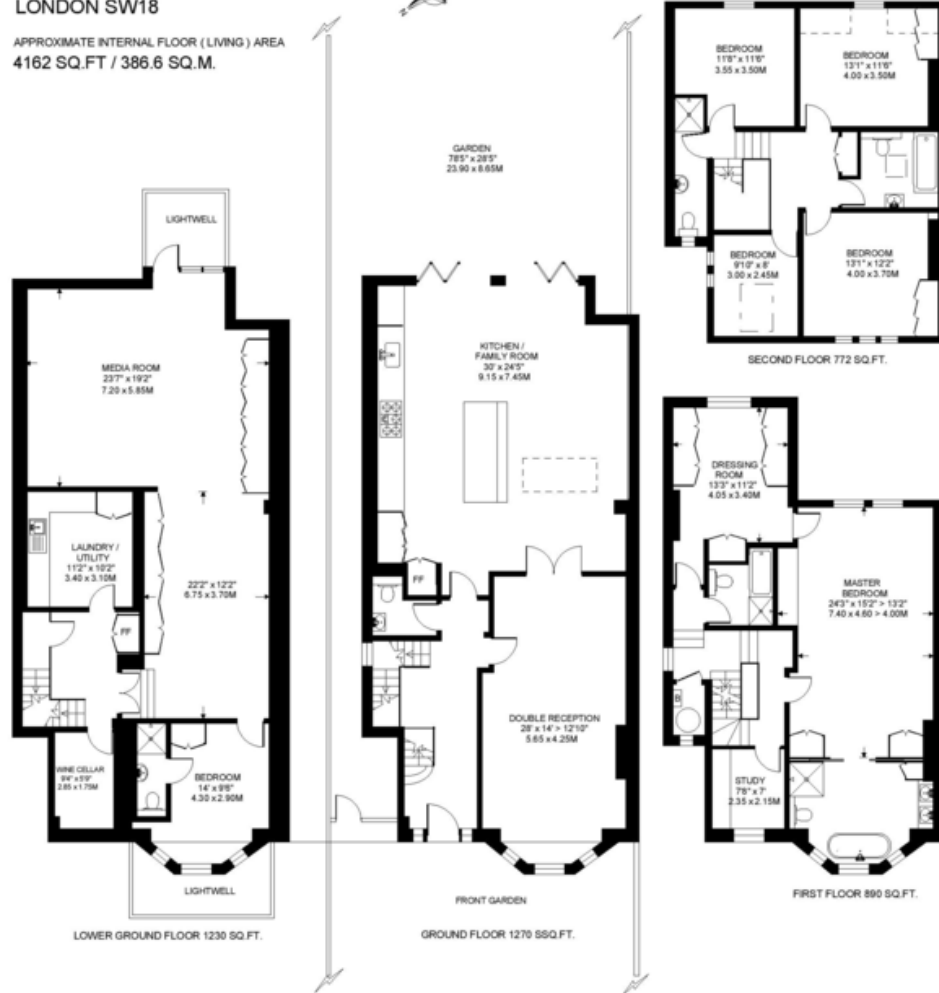




30 Bellevue Road, London, SW17 7EF
 T 020 3846 0999
 E wandsworthsales@ramptonbaseley.com
 www.ramptonbaseley.com

**WESTOVER ROAD
 WANDSWORTH
 LONDON SW18**

APPROXIMATE INTERNAL FLOOR (LIVING) AREA
4162 SQ.FT / 386.6 SQ.M.



COPYRIGHT:
 FLOORPLAN PRODUCED FOR "RAMPTON BASELEY" by www.floorplans.co.uk
 This plan is proportionally correct, but not to a given scale, and is for guidance only, and must not be relied upon as a statement of fact.
 All measurements and areas are approximate only, and have been prepared in accordance with the current edition of the RICS Code of Measuring Practice.
 Where a room has a sloping ceiling, the dotted line marks 1.5m height, and the measurements are shown at floor level.

All statements contained in these particulars as to this property are made without responsibility on the part of Rampton Baseley Estate Agents

