



BANNITS' HOUSE

Chalfont Lane, Chorleywood, Hertfordshire, WD3 5PP

ROBSONS

BANNITS' HOUSE

Chalfont Lane, Chorleywood, Hertfordshire
WD3 5PP

• KITCHEN/BREAKFAST ROOM • 6 RECEPTION ROOMS • ORANGERY • UTILITY ROOM • 2 CLOAKROOMS • 5 BEDROOMS • ALL EN-SUITES • 2 DRESSING ROOMS • TENNIS COURT • 2 BEDROOM COTTAGE

Description

Bannits' House is a beautiful 5 bedroom detached house in just over 1.25 acres of mature landscaped gardens.

To the ground floor the property benefits from a well equipped country style kitchen/breakfast room, a utility, 5 spacious reception rooms and a light filled orangery.

To the first floor there is a grand master suite with French doors to a balcony with south facing views over the rear garden. There are 2 further bedrooms both en-suite.

To the second floor there are 2 bedrooms both with en-suites and dressing rooms. In addition there is a 2 bedroom cottage that is separate from the house.





Location

Rickmansworth and Chorleywood town centres are within reach with their wide choice of boutique shops, coffee houses, restaurants and major supermarkets. The station provides a frequent service to London Baker Street and The City as well as the Chiltern Turbo to Marylebone. Communications are excellent with junction 17 of the M25 close by with links to the major motorway network and airports. The area is well served by highly regarded private and state schools for all ages. Chorleywood offers everything for a sporting life; from cricket, football, tennis, horse riding and golf.

Additional Information

Version 2

Guide Price: Price on Application

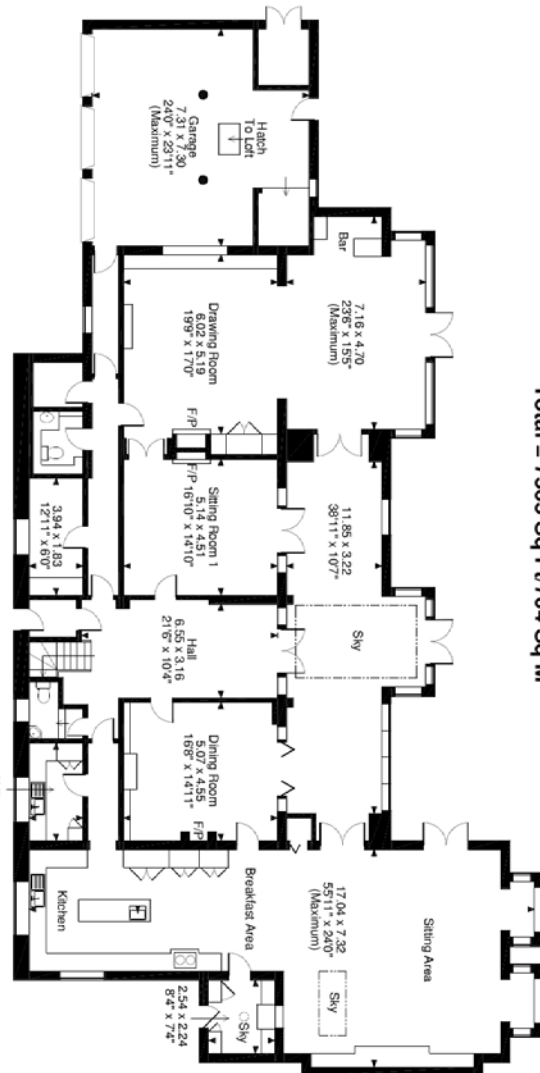
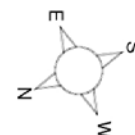
Tenure: Freehold

Local Authority: Three Rivers District Council

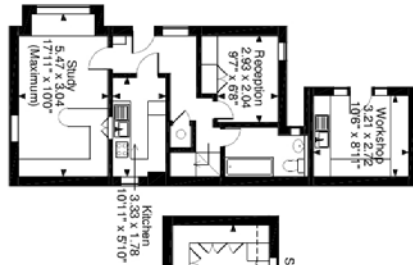
Energy Efficiency Rating: Band E



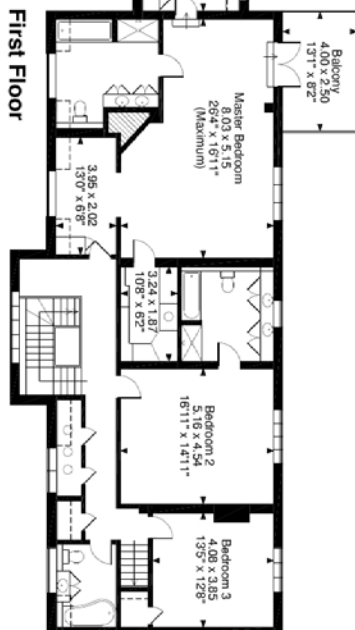
Chalfont Lane, Rickmansworth
Approximate Gross Internal Area
Main House = 6250 Sq Ft/581 Sq M
Garage = 533 Sq Ft/50 Sq M
External Room = 35 Sq Ft/3 Sq M
Cottage = 653 Sq Ft/61 Sq M
Workshop = 94 Sq Ft/9 Sq M
Total = 7565 Sq Ft/704 Sq M



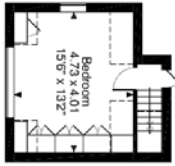
Ground Floor



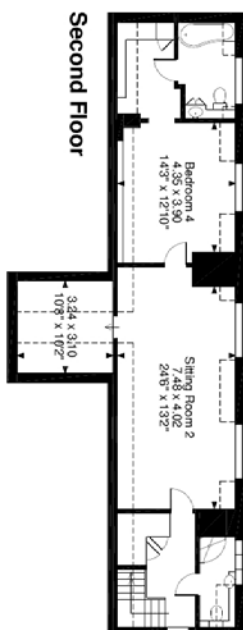
Cottage Ground Floor



First Floor



Cottage First Floor



Second Floor

FOR ILLUSTRATIVE PURPOSES ONLY - NOT TO SCALE

The position & size of doors, windows, appliances and other features are approximate only.
 [---] Denotes restricted head height

© ehousse. Unauthorised reproduction prohibited. Drawing ref: d1g/8304354/PJS

ROBSONS

Address: 130 High Street, Rickmansworth, Hertfordshire, WD3 1AB

Tel: 01923 777 762 email: Rickmansworth@robsonswb.com

www.robsonswb.com