



Neville Road, Ealing, W5 1NN

Price £1,295,000 Freehold



A MOST UNUSUAL AND SPACIOUS BRENTHAM HOUSE IN AN IDYLIC CUL-DE-SAC SETTING ADJOINING AND OVERLOOKING THE PLAYING FIELDS OF BRENTHAM CRICKET CLUB.

This really interesting triple aspect house has been skilfully extended in character to provide a deceptively spacious and appealing home. It has been lovingly restored, preserving and enhancing its original charm and is now a stylish and well-appointed home. It features a splendid family kitchen/breakfast room and the gardens with their perfect views are a real blessing.

Peacefully located at the end of this sylvan cul-de-sac forming part of Ealing's historic Brentham Garden Estate an area rightly deemed a conservation area of high architectural merit. Well placed for Pitshanger Village with its popular shopping parades, vast parks and favoured schools.



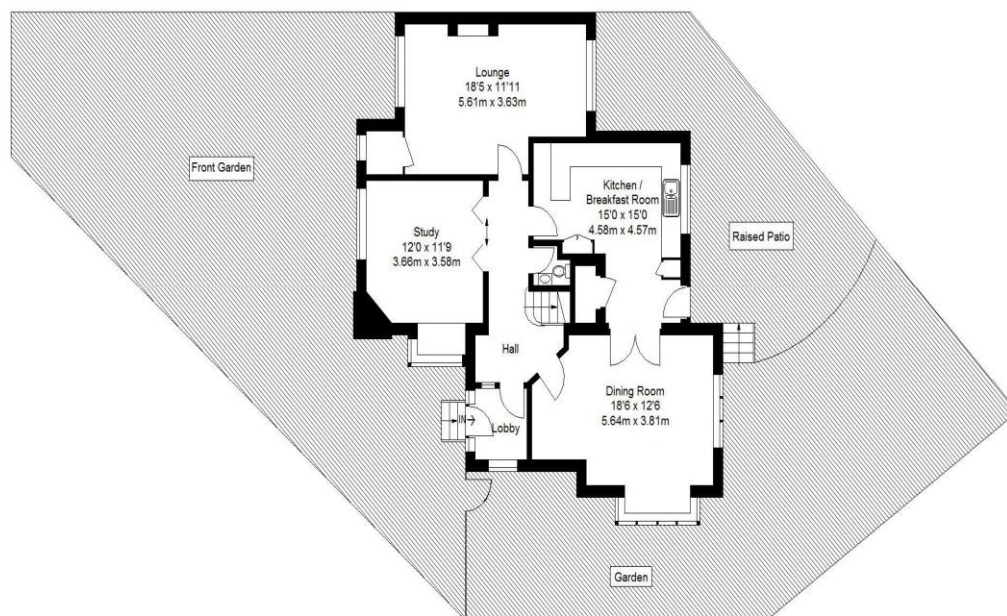
The accommodation offers: Vestibule Entrance, Spacious Entrance Hall, Cloakroom, 3 Bright Double Aspect Reception Rooms, Well-Appointed Family Kitchen/Breakfast Room, Principal Bedroom with en suite Shower Room, 3 Further Bedrooms, Family Bathroom, beautifully maintained gardens to 3 sides with a sun trap terrace area and bordering the cricket ground, Possible off-street parking/garage (*subject to usual consents*).

EPC Rating E



22 Neville Road, Ealing W5 1NN

Approximate Gross Internal Area
 Ground Floor = 1000 sq ft / 92.9 sq m
 First Floor = 891 sq ft / 82.8 sq m
 Total = 1891 sq ft / 175.7 sq m



Ground Floor



First Floor

Cube Property Marketing © 2018
 Illustration for identification purposes only,
 measurements are approximate, not to scale.

