

CAMERONS STIFF & Co.

Inc. QUEENS PARK PARTNERSHIP



Creighton Road, NW6

A charming and beautifully presented four bedroom family home situated moments from the green open spaces of Queens Park. The property is filled with well-maintained and characterful original features, including fully functioning fireplaces throughout. The ground floor boasts a reception room, dining room and fully extended kitchen/diner leading onto a well-manicured 39 ft SOUTH facing rear garden. The first floor comprises of three double bedrooms and two bathrooms. The loft has been converted to form a fourth bedroom.

Situated within easy reach of the delights of both Salusbury Road & Chamberlayne Road with their wide selection of eateries & shops coupled with Queens Park Overground/Bakerloo Line & Kensal Rise Overground Stations (Zone 2).

- Charming family home
- Offering 2000+ sq ft of living space
- 4 bedrooms
- 2 bathrooms
- Stunning open plan kitchen/diner
- 39 ft SOUTH facing rear garden
- Many period features
- Close to Queens Park
- Excellent transport links
- Viewing is essential

£2,400,000 Freehold

www.cameronsstiff.co.uk

CAMERONS STIFF & Co.

Inc. QUEENS PARK PARTNERSHIP



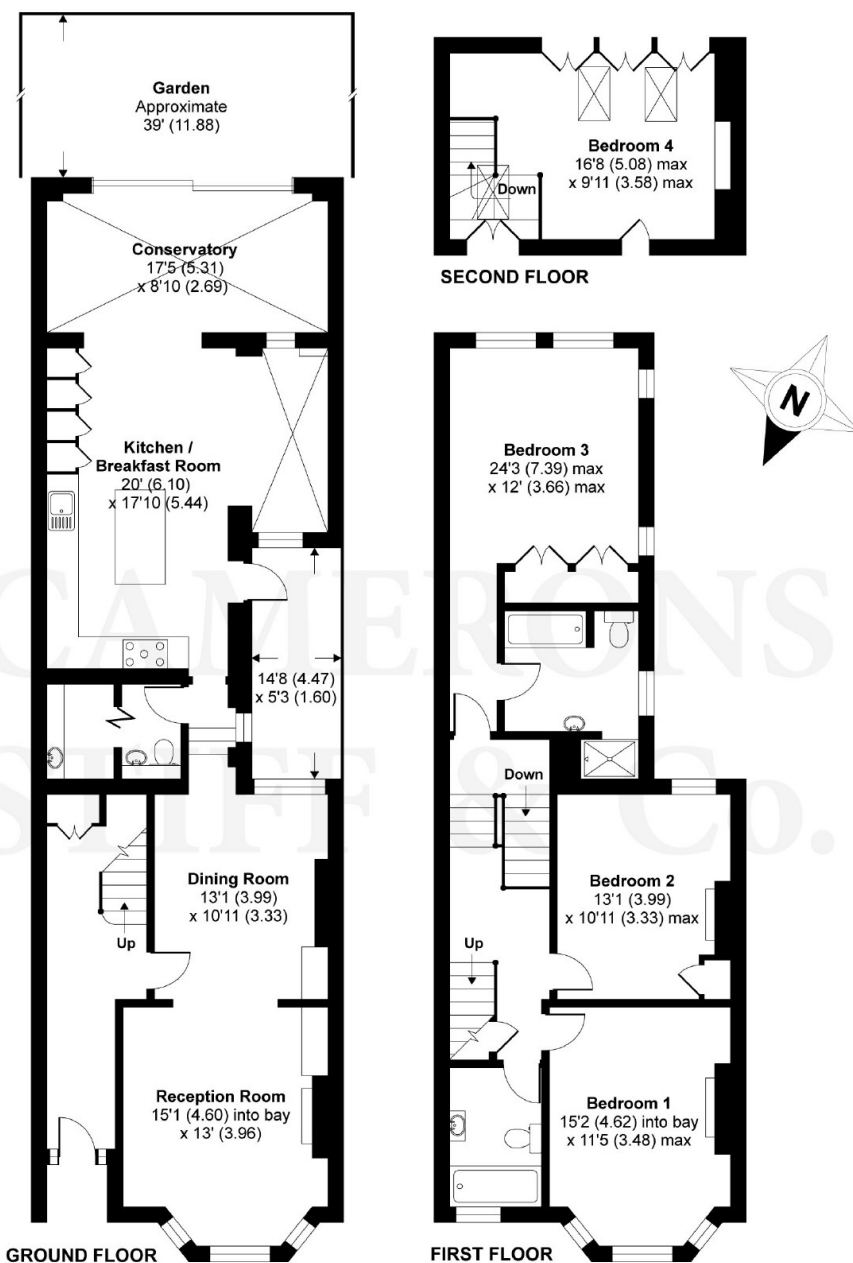
www.cameronsstiff.co.uk

You may download, store and use the material for your own personal use and research. You may not republish, retransmit, redistribute or otherwise make the material available to any party or make the same available on any website, online service or bulletin board of your own or of any other party or make the same available in hard copy or in any other media without the website owner's express prior written consent. The website owner's copyright must remain on all reproductions of material taken from this website.

Energy Efficiency Rating		Current	Potential
102-100	A		
92-101	B		
82-91	C		
72-81	D		
62-71	E	46	61
52-61	F		
42-51	G		
Not energy efficient - higher running costs			
England & Wales		EU Directive 2002/91/EC	

Creighton Road, London, NW6

APPROX. GROSS INTERNAL FLOOR AREA 2058 SQ FT 191.1 SQ METRES



Whilst every attempt has been made to ensure the accuracy of the floor plan contained here, measurements of doors, windows and rooms are approximate and no responsibility is taken for any error, omission or misstatement. These plans are for representation purposes only as defined by RICS Code of Measuring Practice and should be used as such by any prospective purchaser. Specifically no guarantee is given on the total square footage of the property if quoted on this plan. Any figure given is for initial guidance only and should not be relied on as a basis of valuation.

Copyright nichecom.co.uk 2017 Produced for Camerons Stiff & Co REF : 233705

www.cameronsstiff.co.uk

275 Willesden Lane, London NW2 5JA T: 020 8459 1133 E: enquiries@cameronsstiff.co.uk

62 Salusbury Road, London, NW6 6NS T: 020 7328 2828