

# WHITE HORSE VIEW

WESTBURY, WILTSHIRE



A DEVELOPMENT OF 2, 3, 4 & 5 BEDROOM HOMES

# WHITE HORSE VIEW

THE MEAD, WESTBURY, WILTSHIRE BA13 3XE

White Horse View is a beautiful development set in the quaint Wiltshire town of Westbury. Offering two, three, four and five bedroom homes surrounded by the open space of the Salisbury Plain and overlooking the famous Westbury White Horse.

Westbury is a small market town situated at the western edge of Wiltshire beside the chalk downlands that form Salisbury Plain. The variety of surrounding countryside - from the Downs to the broad vale of the White Horse - make it a delight for both the walker and cyclist and the area also provides the perfect location for most air sports.

Westbury offers a range of local amenities including Secondary, Junior and Primary schools, a gym, recreation centre, swimming pool, golf courses, supermarkets, pharmacies, local pubs, restaurants, bars and cafés. The Market Place is a charming old square formed by some of the oldest buildings in the town. Warminster is just 4.5 miles away offering a great mix of independent and high street stores as well as plenty of leisure facilities.

Further afield, the historical city of Bath is 20 miles away from Westbury and perfect for a day of shopping with its high street shops, fashionable boutiques and variety of restaurants and cafés and opportunities to soak up local history, from the Georgian Crescent to the Roman Baths and Thermae Spa.

## Perfectly Located

Westbury is exceptionally well positioned for all UK major road and railway connections with the mainline railway station approximately 6 minutes drive, with links to Reading, London Paddington, Bristol, Bath, Salisbury and Southampton. The A36 is approximately 10 minutes away giving access to the M4.









# WHITE HORSE VIEW

THE MEAD, WESTBURY, WILTSHIRE BA13 3XE



## Schools

-  Bitham Brook Primary School
-  Westbury Infant School
-  Matravers Secondary School
-  Westbury C of E Junior School
-  Fairfield Farm College
-  Wessex College

Please Note: To see full list of schools, please visit our website at [www.barratthomes.co.uk](http://www.barratthomes.co.uk)



## 1 WESTBURY GOLF CLUB

Westbury Golf Club is a mature parkland golf course formed in 1973, nestling at the foot of the Westbury White horse. A nine hole test for all standards of handicap. This is a gently undulating course that appeals to all age groups.



## 2 WHITE HORSE COUNTRY PARK

As an area of Outstanding Natural Beauty, the park offers beautiful countryside, local history and panoramic views. The site hosts the medieval ruins of Thurnham Castle, which are easily explored. Within the park boundaries there are also traces of an Iron Age settlement, providing even more historical interest.



## 3 WHITE HORSE EQUESTRIAN CENTRE

Set in 100 acres of outstanding beautiful countryside, with acres of private woodland trails, indoor and outdoor schools, a mile gallop with jumps and off road trekking straight onto the Salisbury Plains. The equestrian centre also offers lessons and regular horse shows throughout the year.



## 4 LEIGHTON RECREATION CENTRE

This family leisure facility has a kinetika gym offering an ideal environment to tone, tighten, lose weight, build strength or increase stamina at a very reasonable price. Various classes are available including Tai Chi, Yoga and Aerobics, personal training and outdoor sports hire.



## 5 WESTBURY POOL

Westbury Pool is proud to be one of the longest serving indoor public swimming pools (20m x 6.5m pool) in the country. Built in 1887, it has a unique charm, thanks to the traditional Victorian architecture but also makes Westbury Pool ideal for learners, mature bathers and people with disabilities.



## 6 LONGLEAT SAFARI PARK

Feed giraffes by hand, walk on the wild side with lemurs and get up close with many of Africa and Asia's majestic animals, this is just a fraction of what's on offer at the UK's No.1 Safari Park. At Longleat Safari & Adventure Park, you can go back in time and experience over 450 years of history exploring Longleat House.

BARRATT HOMES, BRISTOL DIVISION (A TRADING NAME OF BDW TRADING LTD). BARRATT HOUSE, 710 WATERSIDE DRIVE, AZTEC WEST, ALMONDSBURY, BRISTOL BS32 4UD

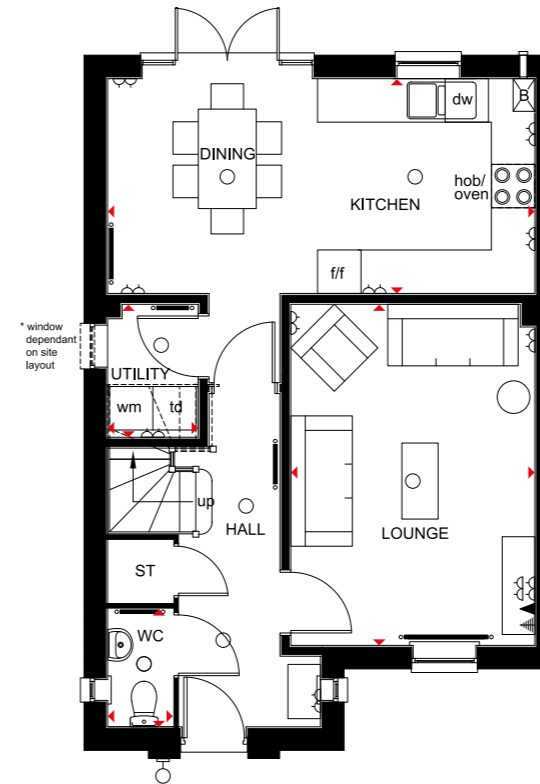
# WHITE HORSE VIEW



## 4 BEDROOM HOME



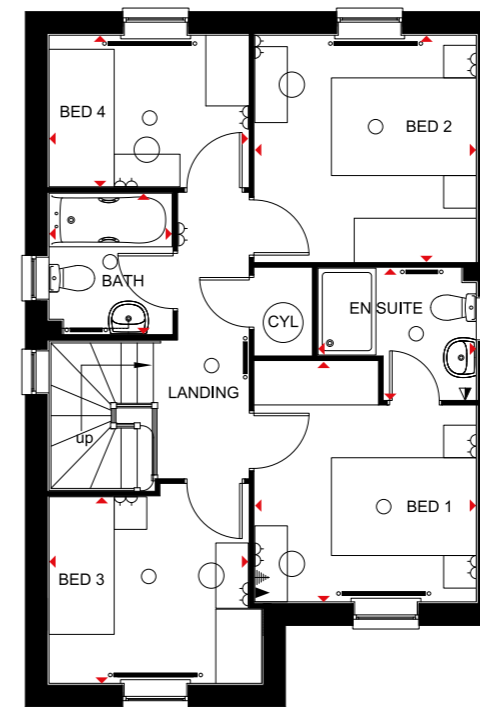
- A fantastic 4 bedroom home offering contemporary family kitchen and dining room with French doors opening onto the rear garden
- Ground floor also boasts delightful lounge and a utility room
- The first floor features two double bedrooms with en suite to master bedroom, two single bedrooms and a family bathroom



### Ground Floor

Lounge	4710 x 3370mm	15'5" x 11'1"
Kitchen/Dining	5900 x 2965mm	19'4" x 9'9"
Utility	1836 x 1250mm	6'0" x 4'1"
WC	1627 x 904mm	5'4" x 3'0"

[Approximate dimensions]



### First Floor

Bedroom 1	3320 x 3059mm	10'11" x 10'0"
En Suite	2187 x 1815mm	7'2" x 5'11"
Bedroom 2	3128 x 3059mm	10'3" x 10'0"
Bedroom 3	2754 x 2577mm	9'0" x 8'5"
Bedroom 4	2753 x 2094mm	9'0" x 6'10"
Bathroom	1941 x 1701mm	6'4" x 5'7"

[Approximate dimensions]

KEY									
○	Light fitting	⚡	T.V. aerial socket	B	Boiler	wm	Washing machine space	td	Tumble dryer space
◁	Electric socket	⚡	Shaver socket	ST	Store	f/f	Fridge/freezer space	◄	Dimension location
◁	Telephone outlet point	—	Radiator	CYL	Cylinder	dw	Dishwasher space		

[barratthomes.co.uk](http://barratthomes.co.uk)

0844 811 18 55

