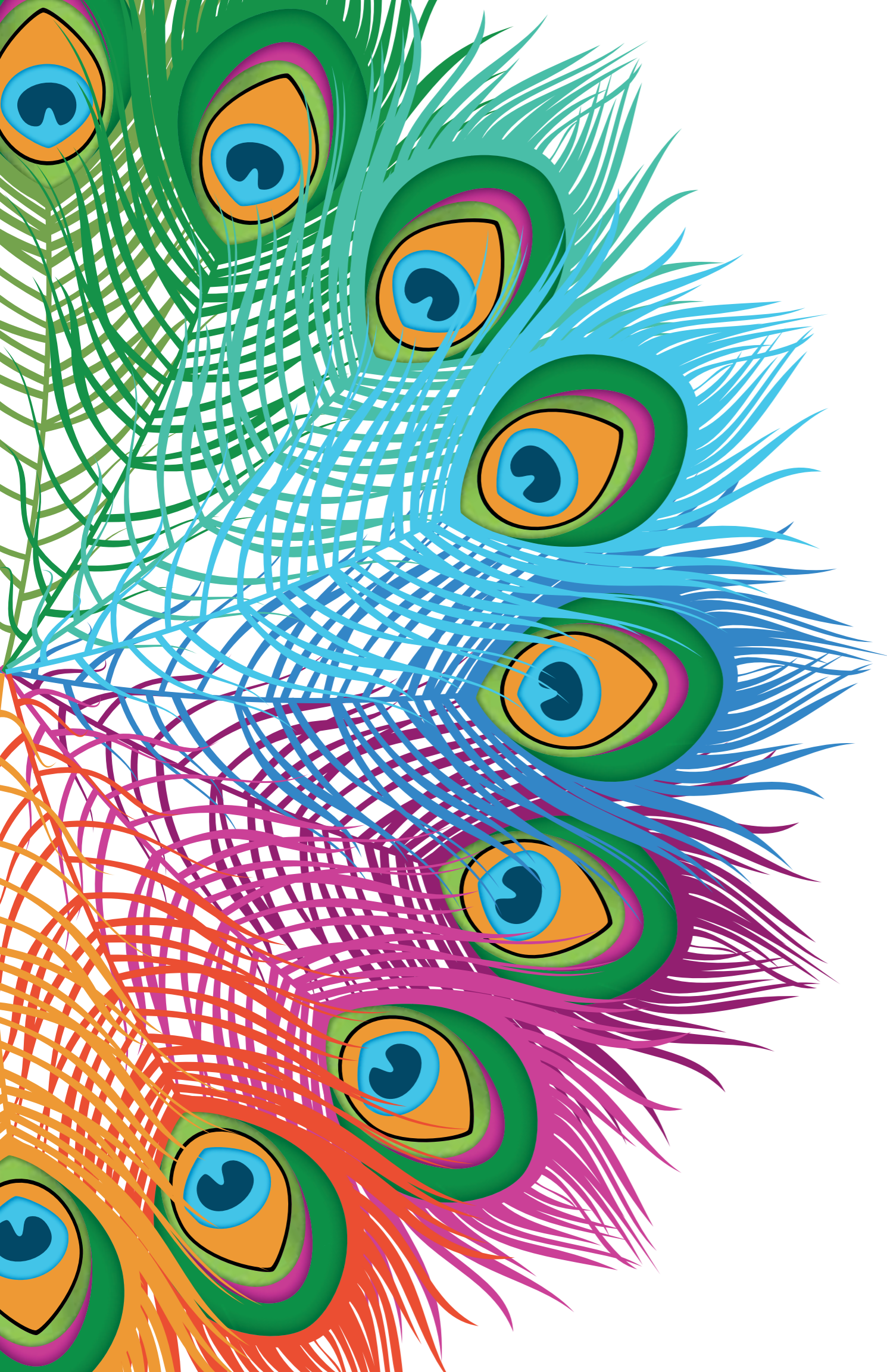




SPECTRUM

• LONDON •



*Welcome to...*



SPECTRUM  
• LONDON •

An exclusive development of superbly appointed apartments and family homes in the heart of Rayners Lane.

Part of an award winning development, close to traditional Harrow and numerous North West London attractions, Spectrum is perfect for commuters, with central London just 26 minutes by tube.

Here you can enjoy the best of city and suburban life in a fantastic location, with superb quality.

At Home Group, we've been building and providing homes tailored for customers' needs for over 75 years. Rest assured that we have the knowledge, reliability and experience to fully support you and ensure everything goes smoothly – before and after you buy.



# Created for living

All homes at Spectrum feature an outstanding attention to detail and high standard specification.

From contemporary-style designed kitchens with quality appliances, to chilled-out living spaces, bright, fresh bathrooms and light and airy bedrooms, you will love the finishing touches creating a modern sense of style and luxury throughout.





# All you need close at hand

Living at the Spectrum, you are perfectly located for a wide choice of amenities.

### Shops

Supermarkets include a Tesco Extra, Sainsbury's local and a larger Asda all within 1.5 miles. There are major high street shops and eateries on Rayners Lane, whilst nearby Harrow boasts two fantastic shopping centres: St Ann's and St George's with all your favourite names, two food courts and a Vue cinema. Snap up a bargain at the London Designer Outlet in Wembley, featuring over 85 shops, 15 restaurants and a Cineworld cinema.

### Restaurants

There are a variety of local restaurants to choose from with cuisines to suite every taste, including Italian and Indian cuisines such as, Incanto, La Collina Pink Turban, La Masala, The Rayners Tandoori Restaurant, Ruby M's.

### Schools

Excellent local schools including:

- Newton Farm and Heathland primary schools
- Whitmore High School and Rooks Heath College

### Activity and Art Centres

- Harrow Leisure Centre
- Hatch End Swimming Pool
- Harrow Arts Centre and Harrow Museum
- Wembley Stadium and Wembley Arena



# The great outdoors on your doorstep

Whether you're looking for family fun, outdoor fitness, or walks in nature, you're spoilt for choice in this corner of North West London. Newton Park West just over a mile away offers 4.6 acres of informal open space, including a children's play area and basketball court. Or 'tackle the Mini Majors' 3 miles away at Harrow's nautically themed Playgolf London.

Just five miles away you can take a leisurely walk in the Ruislip Woods nature reserve, the biggest single area of woodland in Greater London. Or stroll to the Water's Edge Pub, taking in the 60-acre lake at Ruislip Lido, with its sandy beaches, watersplash area and famous narrow gauge railway.



## *Culture, charm and rural calm*

Escape the hustle and bustle to cultural charms and delightful outdoor landscapes, surprisingly close to urban London.

**Osterley Park** and House in Isleworth, one of the last surviving country estates in London features beautiful gardens, park, farmland and grazing Charolais cattle. Its 18th century house created by architect and designer Robert Adam for the Child family to entertain and impress their friends and clients was once described by Horace Walpole as 'the palace of palaces'.

Another unmissable day out all year round is an excursion to the splendid Royal Botanic Gardens at Kew. Only 9.2 miles away and 45 minutes by car, this famous World Heritage Site delights with 300 acres of botanical splendour in beautiful surroundings on the edge of the River Thames.





## Great connections

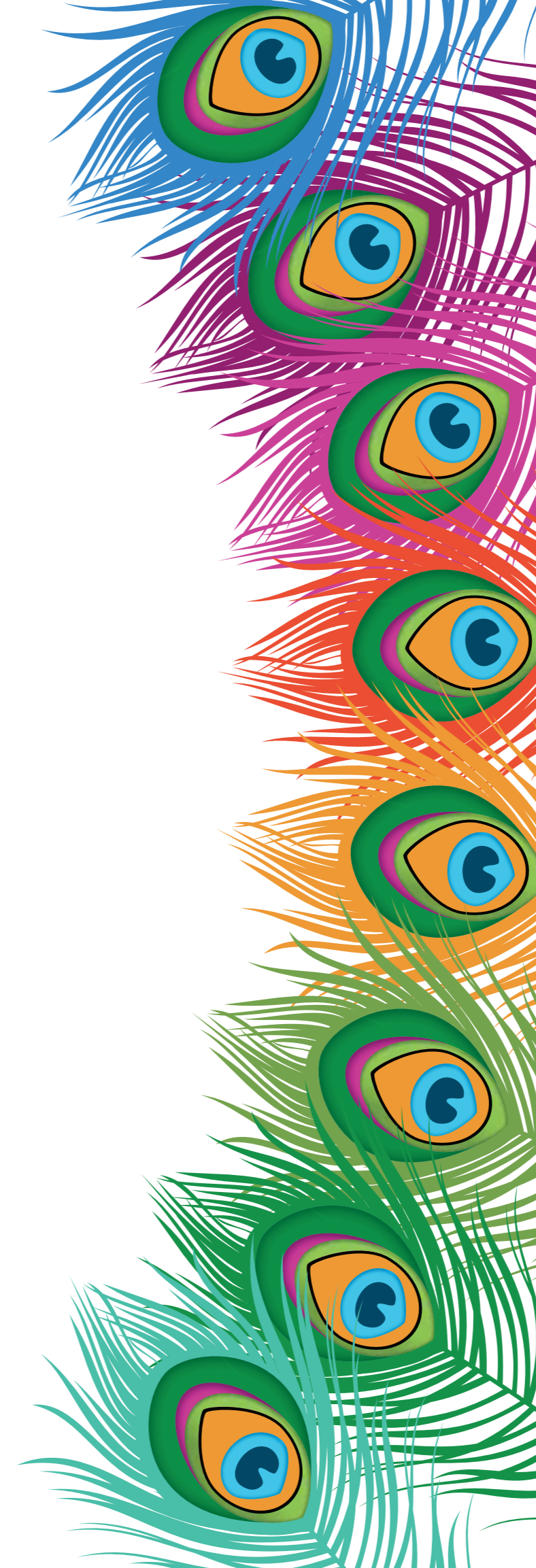
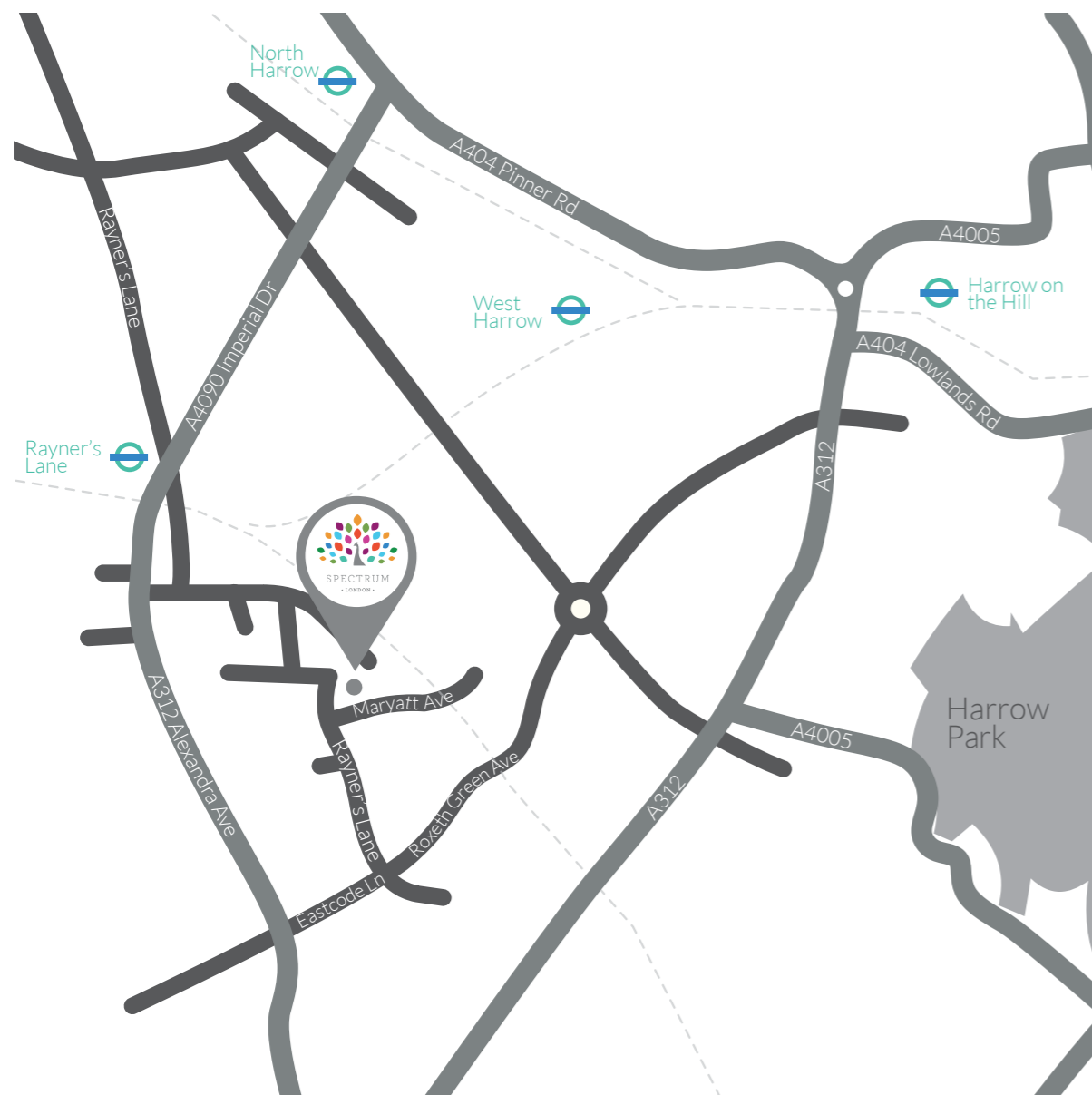
Spectrum is ideally located in North West London with excellent bus routes, road and rail links into the city, across Greater London and further afield in the UK.

## Road

- The M25 just 9.4 miles away - a 20 minute drive.
- The M40, M1, A1 and M3, within 18 miles.
- Heathrow airport is just 30 minutes by car and 48 minutes by public transport.

## Rail

- Rayners Lane underground station - 0.9 miles away.
- Wembley Park - 12 minutes.
- Baker Street - 26 minutes.
- Great central and Greater London connections from Baker Street.
- London Marylebone (16 minutes from Northolt Park railway station, 1.3 miles away) and London Euston (14 minutes from Harrow & Wealdstone railway station, 3 miles away).



*With you every  
step of the way*

At Home Group we've been building and providing homes shaped around people's needs for over 75 years.

To find your dream home at Spectrum, contact our friendly and dedicated sales team today:

02084235431



SPECTRUM  
• LONDON •

02084235431

The details shown in this brochure are a general outline for the guidance of intending purchasers, and do not constitute, nor constitute part of, an offer or contract. All images, descriptions, dimensions, references to measurements and other details used in this brochure are for illustrative purposes only and are given in good faith but any intending purchasers should not rely on them as statements or representations of fact but must satisfy themselves by inspection or otherwise as to their accuracy.

Home Group Developments Limited. Registered Office: 2 Gosforth Park Way, Gosforth Business Park, Newcastle Upon Tyne, NE12 8ET. Registered in England No: 4664018