



# PARK GATE

THE WEMBLEY PARK GATE APARTMENTS  
FLOOR PLANS & SPECIFICATION

---

T H E P L A N S

---



# The plot schedule

PLOT NO.	FLOOR	BEDS	BATHROOMS	SQ M	SQ FT	TENURE	ASPECT	PAGE NO.
3	1	1	1	63.42	683	Private	E	14
4	1	1	1	64.94	699	Private	E	15
5	1	1	1	51.25	552	Private	E	17
6	1	1	1	51.25	552	Private	E	21
7	1	2	2	74.33	800	Private	SE	31
8	1	3	2	86.29	929	Private	SW	46
9	1	2	2	90.72	977	Private	W	33
10	1	1	1	55.66	599	Private	W	23
11	1	1	1	56.45	608	Private	W	24
16	2	2	2	83.21	896	Private	E	34
17	2	2	2	78.17	841	Private	E	35
18	2	1	1	51.25	552	Private	E	16
19	2	1	1	51.25	552	Private	E	20
20	2	2	2	74.33	800	Private	SE	32
21	2	3	2	86.29	929	Private	SW	44
22	2	1	1	52.73	568	Private	W	25
23	2	1	1	53.54	576	Private	W	27
24	2	2	2	83.60	900	Private	W	36
25	2	2	2	77.17	831	Private	W	37
30	3	2	2	83.21	896	Private	E	34
31	3	2	2	78.17	841	Private	E	35
32	3	1	1	51.25	552	Private	E	16
33	3	1	1	51.25	552	Private	E	20
34	3	2	2	74.33	800	Private	SE	30
35	3	3	2	86.29	929	Private	SW	45
36	3	1	1	52.73	568	Private	W	25
37	3	1	1	53.54	576	Private	W	27
38	3	2	2	83.60	900	Private	W	36
39	3	2	2	77.17	831	Private	W	37
44	4	2	2	83.21	896	Private	E	34
45	4	2	2	78.17	841	Private	E	35
46	4	1	1	51.25	552	Private	E	16
47	4	1	1	51.25	552	Private	E	20
48	4	2	2	74.33	800	Private	SE	32
49	4	3	2	86.29	929	Private	SW	44
50	4	1	1	52.73	568	Private	W	25
51	4	1	1	53.54	576	Private	W	27
52	4	2	2	83.60	900	Private	W	36
53	4	2	2	77.17	831	Private	W	37
59	5	2	2	83.21	896	Private	E	34
60	5	2	2	78.17	841	Private	E	35
61	5	1	1	51.25	552	Private	E	16
62	5	1	1	51.25	552	Private	E	20
63	5	2	2	74.33	800	Private	SE	30
64	5	3	2	86.29	929	Private	SW	45
65	5	1	1	52.73	568	Private	W	25
66	5	1	1	53.54	576	Private	W	27

PLOT NO.	FLOOR	BEDS	BATHROOMS	SQ M	SQ FT	TENURE	ASPECT	PAGE NO.
67	5	2	2	83.60	900	Private	W	36
68	5	2	2	77.17	831	Private	W	37
74	6	2	2	83.21	896	Private	E	34
75	6	2	2	78.17	841	Private	E	35
76	6	1	1	51.25	552	Private	E	16
77	6	1	1	51.25	552	Private	E	20
78	6	2	2	74.33	800	Private	SE	32
79	6	3	2	86.29	929	Private	SW	44
80	6	1	1	52.73	568	Private	W	25
81	6	1	1	53.54	576	Private	W	27
82	6	2	2	83.60	900	Private	W	36
83	6	2	2	77.17	831	Private	W	37
89	7	2	2	83.21	896	Private	E	34
90	7	2	2	78.17	841	Private	E	35
91	7	1	1	51.25	552	Private	E	16
92	7	1	1	51.25	552	Private	E	20
93	7	2	2	74.33	800	Private	SE	30
94	7	3	2	86.29	929	Private	SW	45
95	7	1	1	52.73	568	Private	W	25
96	7	1	1	53.54	576	Private	W	27
97	7	2	2	83.60	900	Private	W	36
98	7	2	2	77.17	831	Private	W	37
103	8	1	1	51.28	552	Private	E	22
104	8	2	2	83.21	896	Private	E	34
105	8	2	2	78.17	841	Private	E	35
106	8	1	1	51.25	552	Private	E	16
107	8	1	1	51.25	552	Private	E	20
108	8	2	2	74.33	800	Private	SE	32
109	8	3	2	86.29	929	Private	SW	44
110	8	1	1	52.73	568	Private	W	25
111	8	1	1	53.54	576	Private	W	27
112	8	2	2	83.60	900	Private	W	36
113	8	2	2	77.17	831	Private	W	37
117	9	1	1	51.38	553	Private	E	18
118	9	1	1	51.28	552	Private	E	22
119	9	2	2	83.21	896	Private	E	34
120	9	2	2	78.17	841	Private	E	35
121	9	1	1	51.25	552	Private	E	16
122	9	1	1	51.25	552	Private	E	20
123	9	2	2	74.33	800	Private	SE	30
124	9	3	2	86.29	929	Private	SW	45
125	9	1	1	52.73	568	Private	W	25
126	9	1	1	53.54	576	Private	W	27
127	9	2	2	83.60	900	Private	W	36
128	9	2	2	77.17	831	Private	W	37
129	9	1	1	52.85	569	Private	W	26
130	9	0	1	48.06	517	Private	W	12

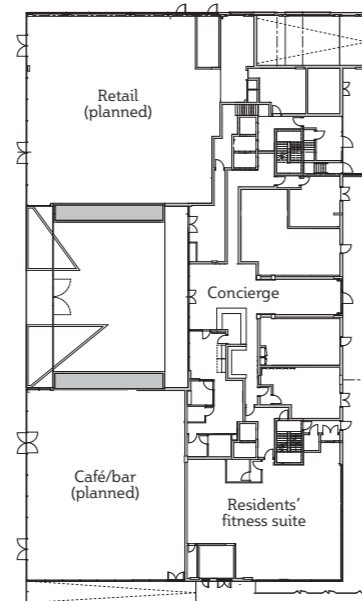
# The plot schedule

PLOT NO.	FLOOR	BEDS	BATHROOMS	SQ M	SQ FT	TENURE	ASPECT	PAGE NO.
131	9	2	2	71.37	768	Private	NW	38
133	10	1	1	51.38	553	Private	E	18
134	10	1	1	51.28	552	Private	E	22
135	10	2	2	83.21	896	Private	E	34
136	10	2	2	78.17	841	Private	E	35
137	10	1	1	51.25	552	Private	E	16
138	10	1	1	51.25	552	Private	E	20
139	10	2	2	74.33	800	Private	SE	32
140	10	3	2	86.29	929	Private	SW	44
141	10	1	1	52.73	568	Private	W	25
142	10	1	1	53.54	576	Private	W	27
143	10	2	2	83.60	900	Private	W	36
144	10	2	2	77.17	831	Private	W	37
145	10	1	1	52.85	569	Private	W	26
146	10	1	1	55.36	596	Private	W	28
147	10	2	2	71.37	768	Private	NW	39
148	11	3	2	87.83	945	Private	NE	47
149	11	1	1	52.41	564	Private	E	19
150	11	1	1	51.28	552	Private	E	22
151	11	2	2	76.98	829	Private	E	40
152	11	2	2	79.11	852	Private	E	41
153	11	1	1	51.25	552	Private	E	16
154	11	1	1	51.25	552	Private	E	20
155	11	2	2	74.33	800	Private	SE	30
156	11	3	2	86.29	929	Private	SW	45
157	11	1	1	52.73	568	Private	W	25
158	11	1	1	53.54	576	Private	W	27
159	11	2	2	77.37	833	Private	W	42
160	11	2	2	78.12	841	Private	W	43
161	11	1	1	52.85	569	Private	W	26
162	11	1	1	55.36	596	Private	W	28
163	11	2	2	71.37	768	Private	NW	38
164	12	3	2	87.83	945	Private	NE	48
165	12	1	1	52.41	564	Private	E	19
166	12	1	1	51.28	552	Private	E	22
167	12	2	2	76.98	829	Private	E	40
168	12	2	2	79.11	852	Private	E	41
169	12	1	1	51.25	552	Private	E	16
170	12	1	1	51.25	552	Private	E	20
171	12	2	2	74.33	800	Private	SE	32
172	12	3	2	86.29	929	Private	SW	44
173	12	1	1	52.73	568	Private	W	25
174	12	1	1	53.54	576	Private	W	27
175	12	2	2	77.37	833	Private	W	42
176	12	2	2	78.12	841	Private	W	43
177	12	1	1	52.85	569	Private	W	26
178	12	1	1	55.36	596	Private	W	28

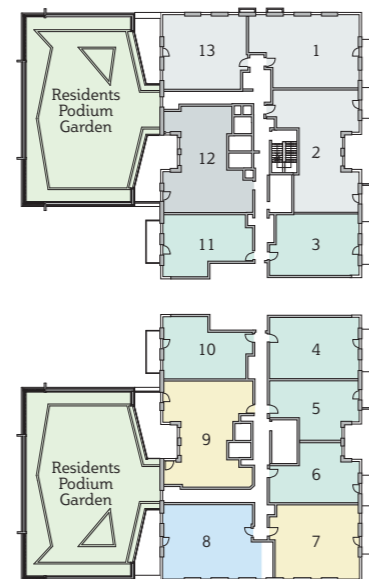
PLOT NO.	FLOOR	BEDS	BATHROOMS	SQ M	SQ FT	TENURE	ASPECT	PAGE NO.
179	12	2	2	71.37	768	Private	NW	39
180	13	3	2	87.83	945	Private	NE	47
181	13	1	1	52.41	564	Private	E	19
182	13	1	1	51.28	552	Private	E	22
183	13	2	2	76.98	829	Private	E	40
184	13	2	2	79.11	852	Private	E	41
185	13	1	1	51.25	552	Private	E	16
186	13	1	1	51.25	552	Private	E	20
187	13	2	2	74.33	800	Private	SE	30
188	13	3	2	86.29	929	Private	SW	45
189	13	1	1	52.73	568	Private	W	25
190	13	1	1	53.54	576	Private	W	27
191	13	2	2	77.37	833	Private	W	42
192	13	2	2	78.12	841	Private	W	43
193	13	1	1	52.85	569	Private	W	26
194	13	1	1	55.36	596	Private	W	28
195	13	2	2	71.37	768	Private	NW	38
196	14	3	2	87.83	945	Private	NE	48
197	14	1	1	52.41	564	Private	E	19
198	14	1	1	51.28	552	Private	E	22
199	14	2	2	76.98	829	Private	E	40
200	14	2	2	79.11	852	Private	E	41
201	14	1	1	51.25	552	Private	E	16
202	14	1	1	51.25	552	Private	E	20
203	14	2	2	74.33	800	Private	E	32
204	14	3	2	86.29	929	Private	SW	44
205	14	1	1	52.73	568	Private	W	25
206	14	1	1	53.54	576	Private	W	27
207	14	2	2	77.37	833	Private	W	42
208	14	2	2	78.12	841	Private	W	43
209	14	1	1	52.85	569	Private	W	26
210	14	1	1	55.36	596	Private	W	28
211	14	2	2	71.37	768	Private	NW	39

# Wembley Park Gate apartments floor plates

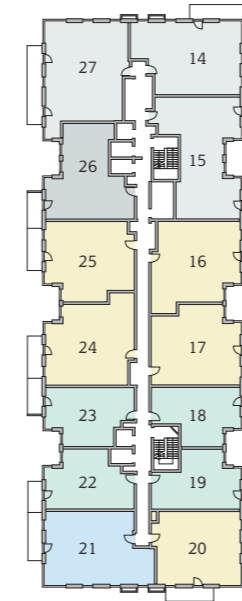
## Floor 0



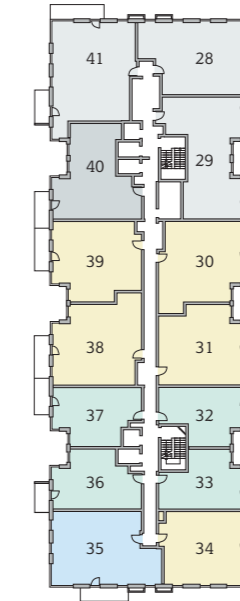
## Floor 1



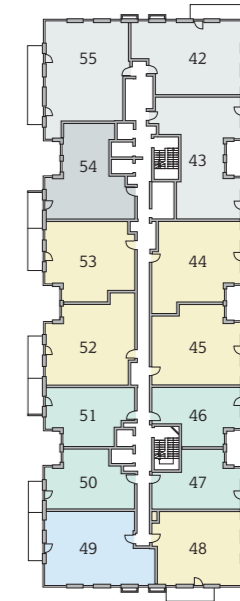
## Floor 2



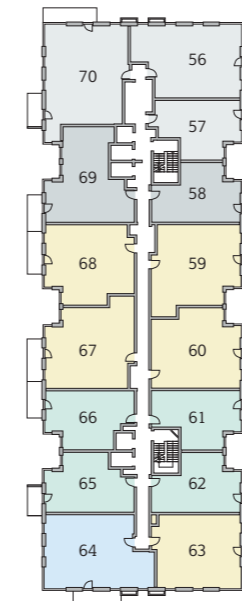
## Floor 3



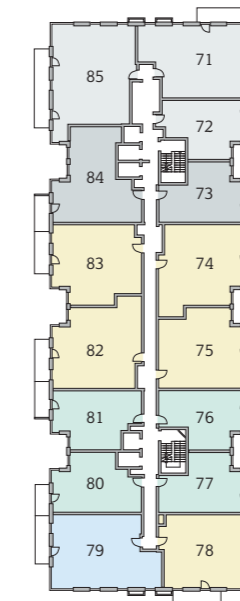
## Floor 4



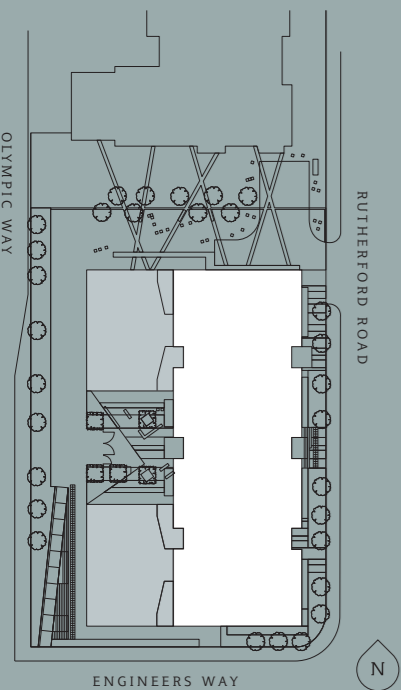
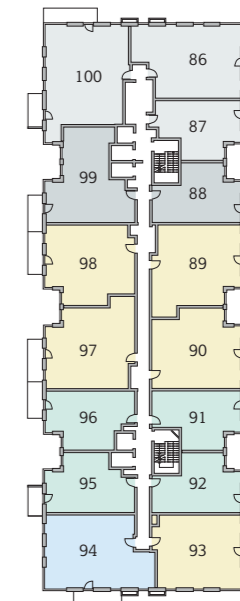
## Floor 5



## Floor 6



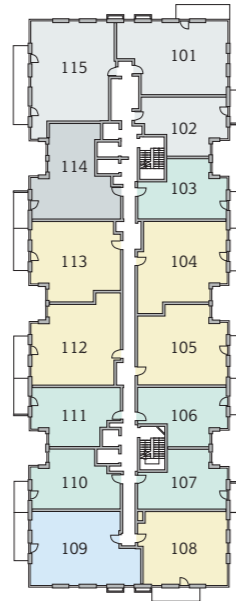
## Floor 7



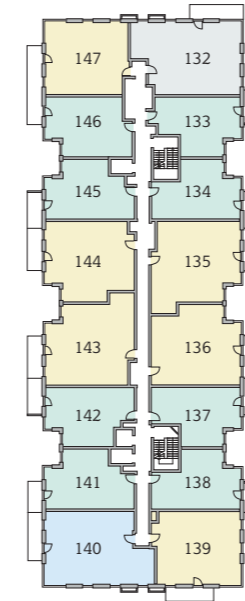
- One bedroom apartments
- Two bedroom apartments
- Three bedroom apartments
- Affordable housing
- Shared ownership

# Wembley Park Gate apartments floor plates

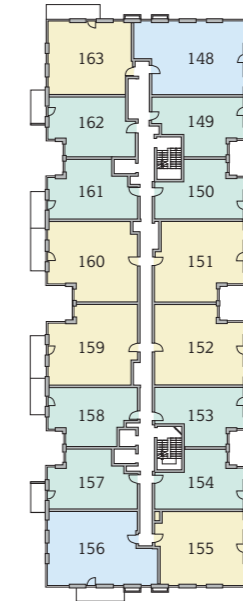
## Floor 8



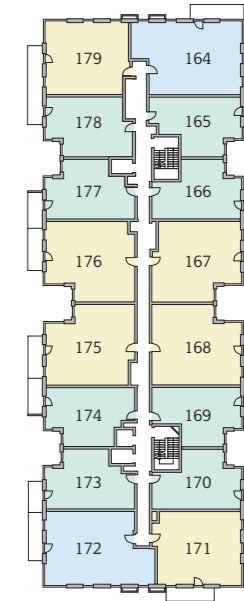
## Floor 10



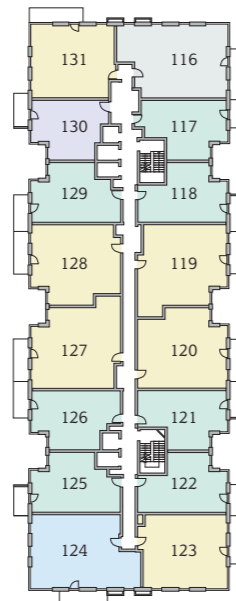
## Floor 11



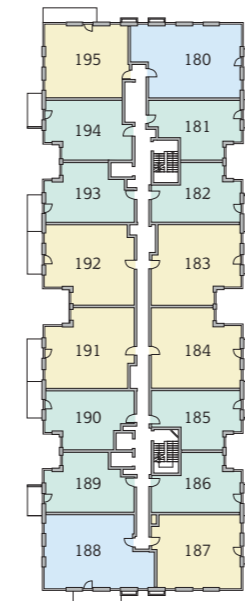
## Floor 12



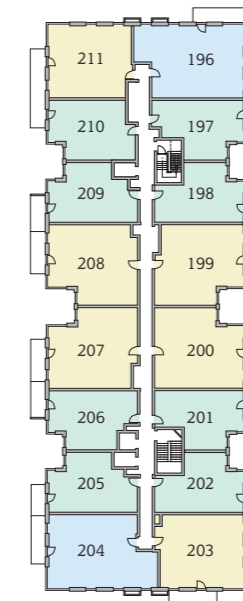
## Floor 9



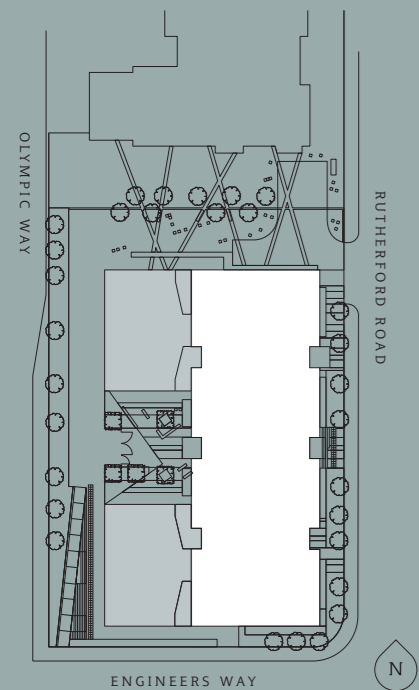
## Floor 13



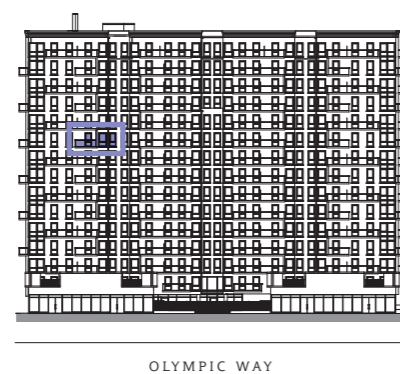
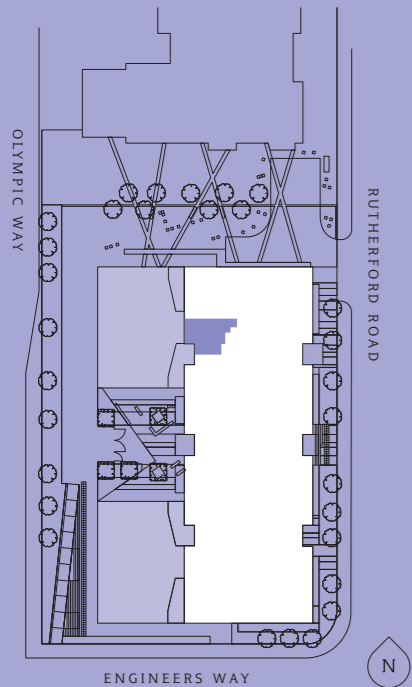
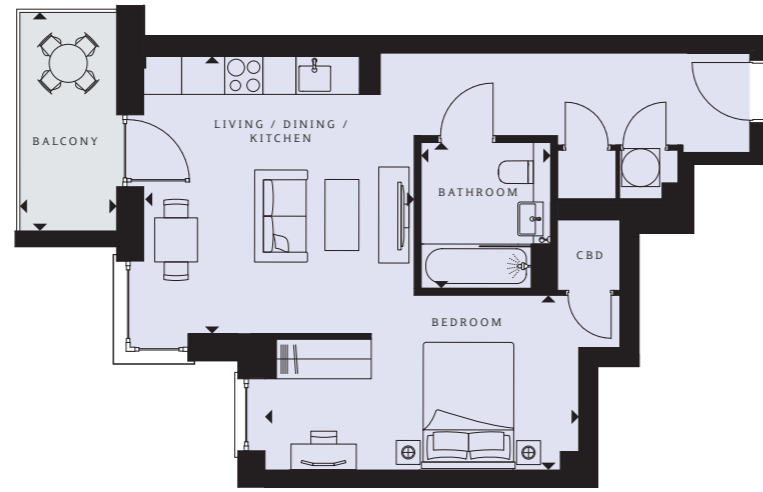
## Floor 14



- One bedroom suite
- One bedroom apartments
- Two bedroom apartments
- Three bedroom apartments
- Affordable housing
- Shared ownership



# 1 bedroom suite



- Plot number (floor)**  
130 (9)

---

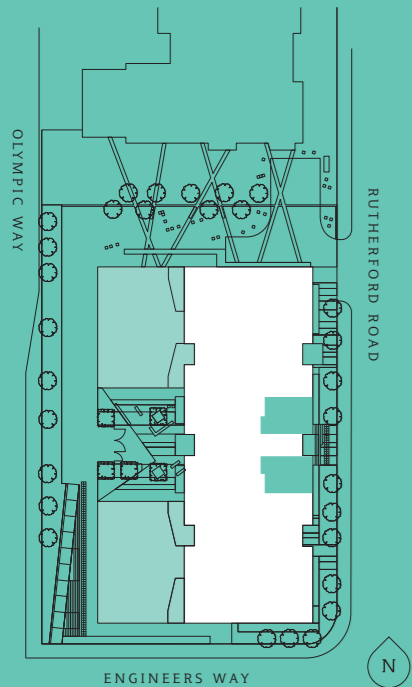
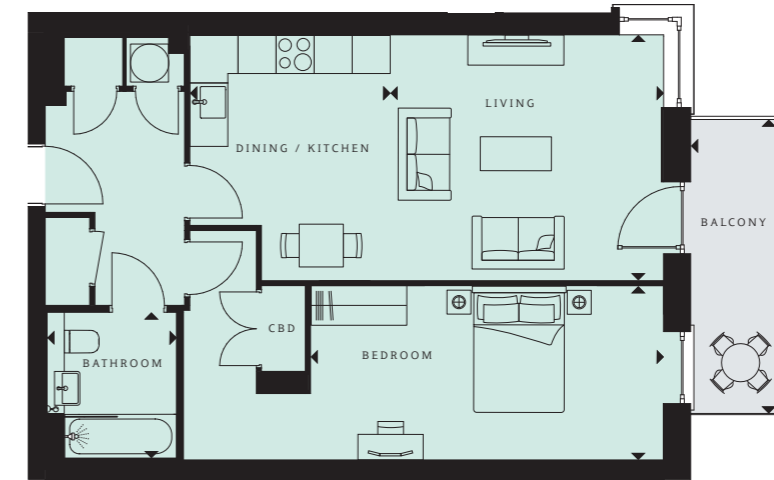
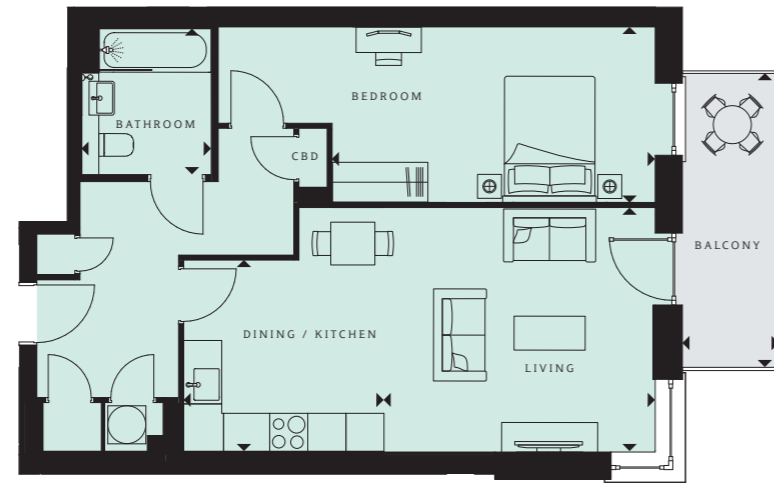
- Living/dining/kitchen**  
14'6" x 14'0" (4425 x 4265mm)
- Bedroom**  
16'3" x 9'0" (4950 x 2755mm)
- Bathroom**  
7'7" x 6'8" (2300 x 2040mm)
- TOTAL AREA**  
517 sq ft (48.02 sq m)
- Balcony**  
11'3" x 5'0" (3445 x 1525mm)  
57 sq ft (5 sq m)

Interior photography is from a previous Barratt London development with a similar specification.





# 1 bedroom apartments



**Plot number (floor)**  
3 (1)

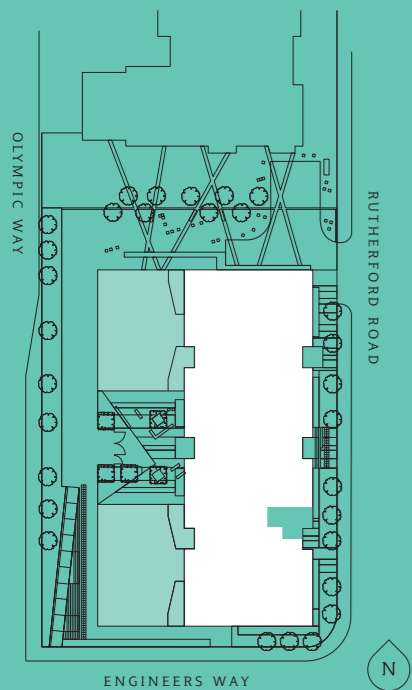
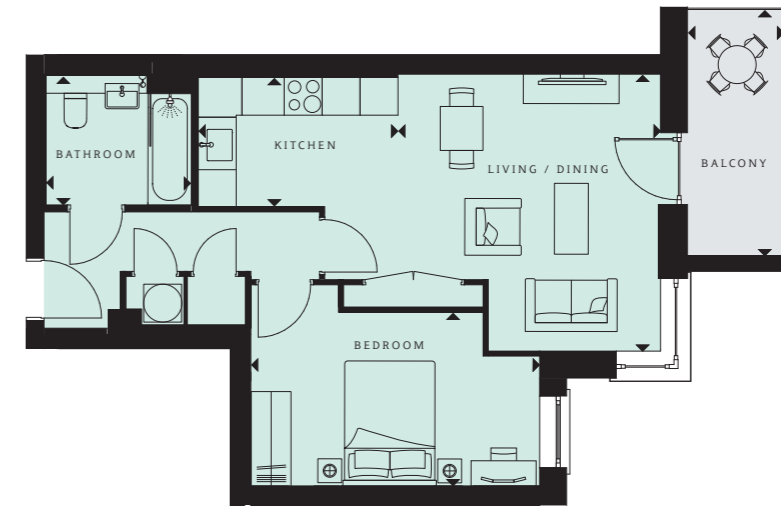
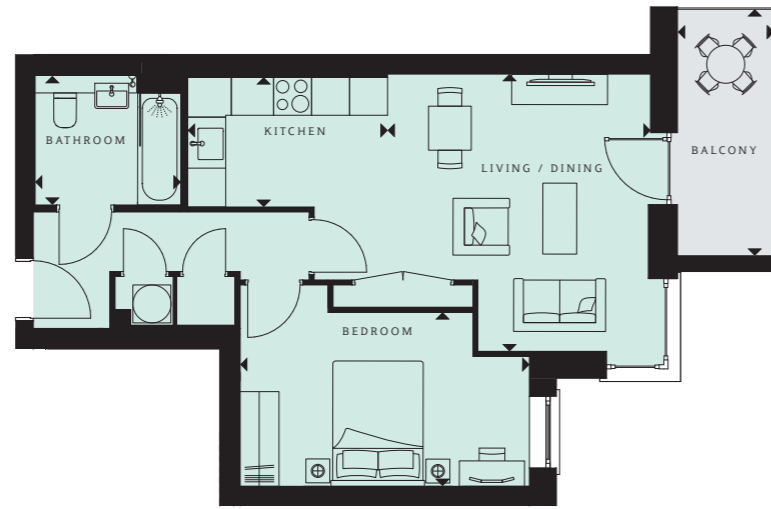
- Living**  
14'0" x 12'8" (3855 x 4275mm)
- Dining/kitchen**  
12'8" x 10'4" (3855 x 3160mm)
- Bedroom**  
22'7" x 9'1" (6890 x 2770mm)
- Bathroom**  
7'7" x 6'8" (2300 x 2040mm)
- TOTAL AREA**  
683 sq ft (63.42 sq m)
- Balcony**  
15'2" x 5'0" (4635 x 1525mm)  
76 sq ft (7 sq m)



**Plot number (floor)**  
4 (1)

- Living**  
14'2" x 12'9" (4310 x 3875mm)
- Dining/kitchen**  
12'9" x 10'4" (3875 x 3160mm)
- Bedroom**  
22'7" x 9'1" (7570 x 2750mm)
- Bathroom**  
7'7" x 6'8" (2300 x 2040mm)
- TOTAL AREA**  
699 sq ft (64.94 sq m)
- Balcony**  
15'2" x 5'0" (4635 x 1525mm)  
76 sq ft (7 sq m)

# 1 bedroom apartments



**Plot number (floor)**  
 18 (2) 32 (3) 46 (4) 61 (5)  
 76 (6) 91 (7) 106 (8) 121 (9)  
 137 (10) 153 (11) 169 (12)  
 185 (13) 201 (14)

**Living/dining**  
 14'4" x 13'8" (4380 x 4155mm)

**Kitchen**  
 10'4" x 6'9" (3160 x 2050mm)

**Bedroom**  
 15'0" x 9'0" (4570 x 2750mm)

**Bathroom**  
 7'7" x 6'8" (2300 x 2040mm)

**TOTAL AREA**  
 552 sq ft (51.25 sq m)

**Balcony**  
 12'8" x 5'0" (3895 x 1525mm)  
 64 sq ft (6 sq m)

**Plot number (floor)**  
 5 (1)

**Living/dining**  
 14'4" x 13'8" (4380 x 4155mm)

**Kitchen**  
 10'4" x 6'9" (3160 x 2050mm)

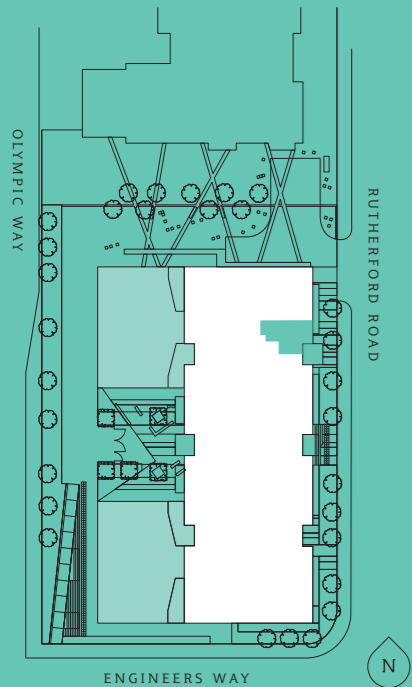
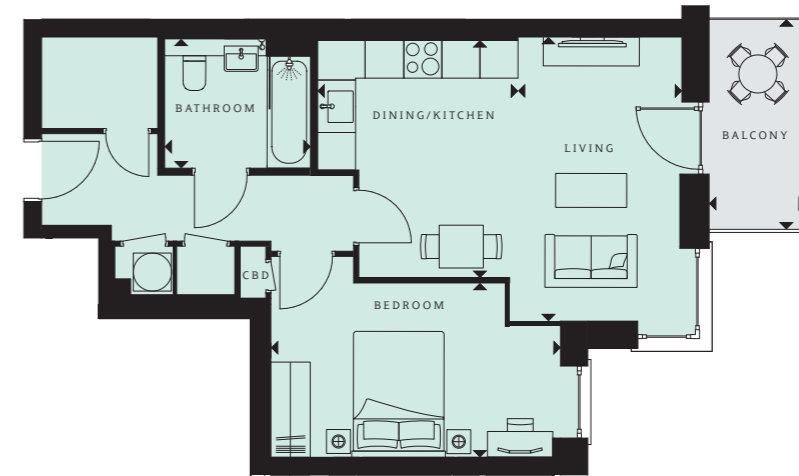
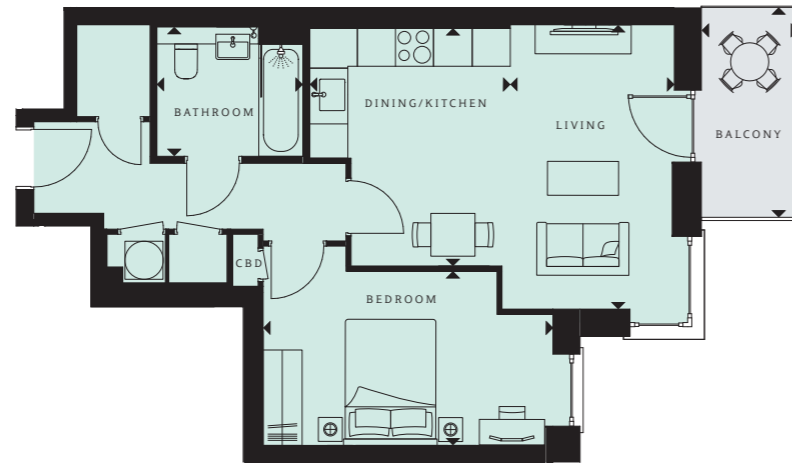
**Bedroom**  
 15'0" x 9'0" (4570 x 2750mm)

**Bathroom**  
 7'7" x 6'8" (2300 x 2040mm)

**TOTAL AREA**  
 552 sq ft (51.25 sq m)

**Balcony**  
 12'8" x 5'0" (3895 x 1525mm)  
 64 sq ft (6 sq m)

# 1 bedroom apartments



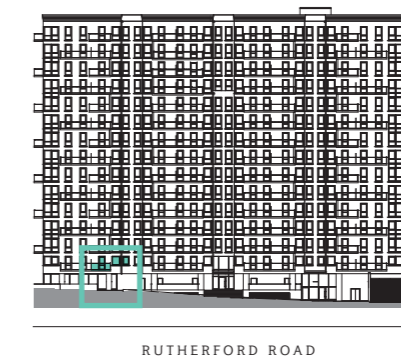
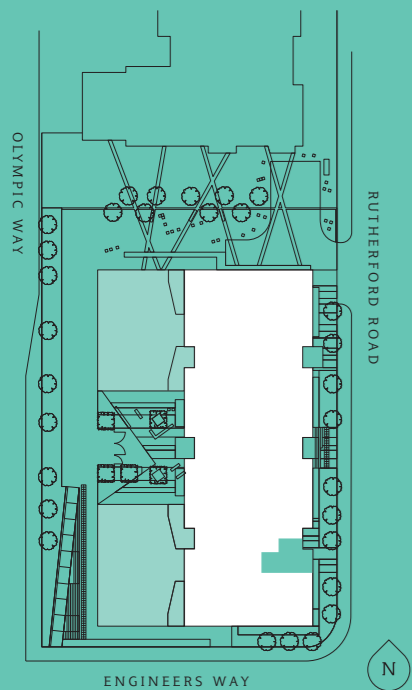
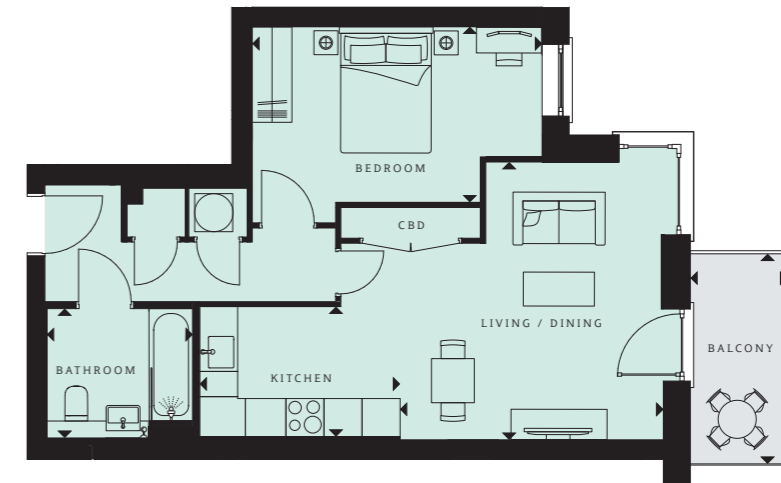
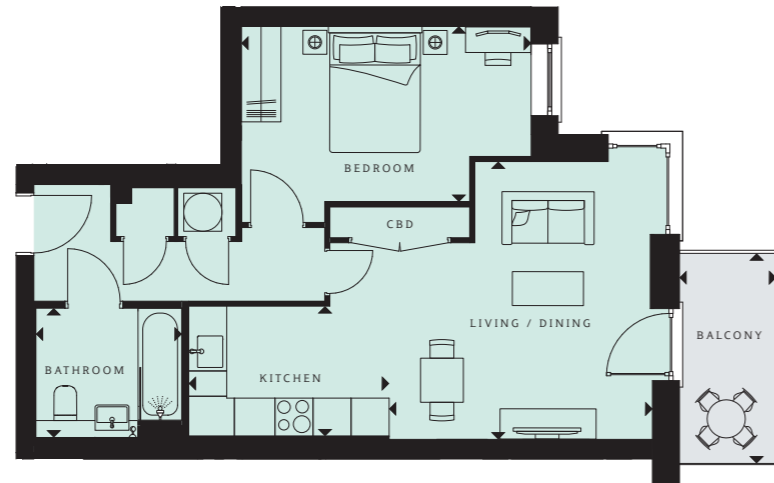
**Plot number (floor)**  
117 (9) 133 (10)

**Living**  
14'8" x 8'6" (4480 x 2585mm)  
**Dining/kitchen**  
12'4" x 10'4" (3750 x 3160mm)  
**Bedroom**  
15'0" x 9'0" (4570 x 2750mm)  
**Bathroom**  
6'8" x 7'7" (2300 x 2040mm)  
**TOTAL AREA**  
553 sq ft (51.38 sq m)  
**Balcony**  
10'9" x 5'0" (3310 x 1525mm)  
64 sq ft (6 sq m)

**Plot number (floor)**  
149 (11) 165 (12) 181 (13)  
197 (14)

**Living**  
14'8" x 8'6" (4480 x 2585mm)  
**Dining/kitchen**  
12'4" x 10'4" (3750 x 3160mm)  
**Bedroom**  
15'0" x 9'0" (4570 x 2750mm)  
**Bathroom**  
7'7" x 6'8" (2300 x 2040mm)  
**TOTAL AREA**  
564 sq ft (52.41 sq m)  
**Balcony**  
10'9" x 5'0" (3310 x 1525mm)  
64 sq ft (6 sq m)

# 1 bedroom apartments



**Plot number (floor)**  
 19 (2) 33 (3) 47 (4) 62 (5)  
 77 (6) 92 (7) 107 (8) 122 (9)  
 138 (10) 154 (11) 170 (12)  
 186 (13) 202 (14)

**Living/dining**  
 14'4" x 13'7" (4380 x 4150mm)

**Kitchen**  
 10'4" x 6'9" (3160 x 2050mm)

**Bedroom**  
 15'0" x 9'1" (4570 x 2770mm)

**Bathroom**  
 7'7" x 6'8" (2300 x 2040mm)

**TOTAL AREA**  
 552 sq ft (51.25 sq m)

**Balcony**  
 10'9" x 5'0" (3310 x 1525mm)  
 54 sq ft (5 sq m)

**Plot number (floor)**  
 6 (1)

**Living/dining**  
 14'4" x 13'7" (4380 x 4150mm)

**Kitchen**  
 10'4" x 6'9" (3160 x 2050mm)

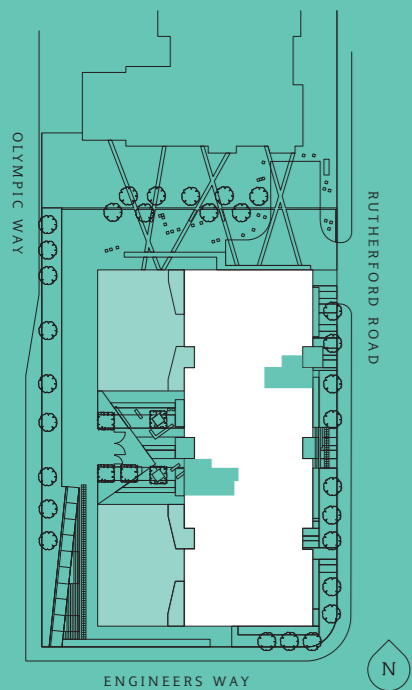
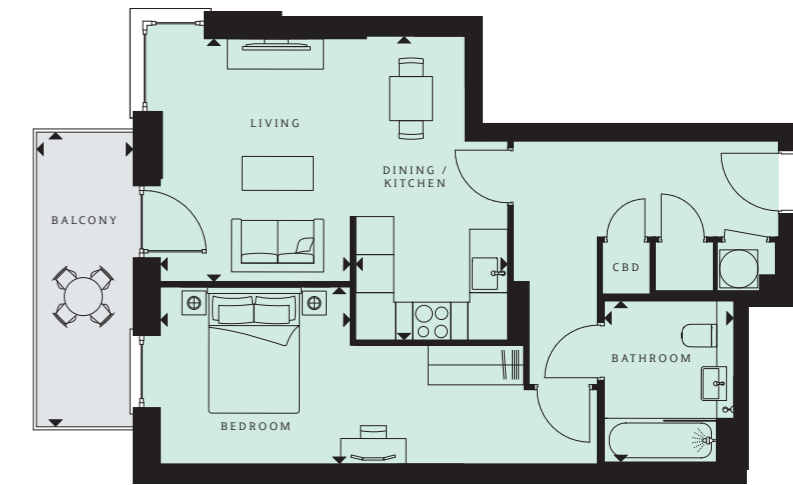
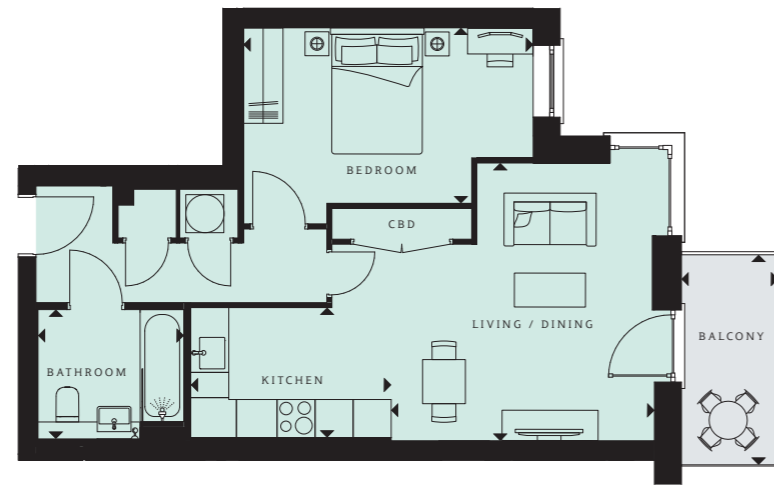
**Bedroom**  
 15'0" x 9'1" (4570 x 2770mm)

**Bathroom**  
 7'7" x 6'8" (2300 x 2040mm)

**TOTAL AREA**  
 552 sq ft (51.25 sq m)

**Balcony**  
 10'9" x 5'0" (3310 x 1525mm)  
 54 sq ft (5 sq m)

# 1 bedroom apartments



**Plot number (floor)**  
103 (8) 118 (9) 134 (10) 150 (11)  
166 (12) 182 (13) 198 (14)

**Living/dining**  
14'4" x 13'8" (4380 x 4155mm)

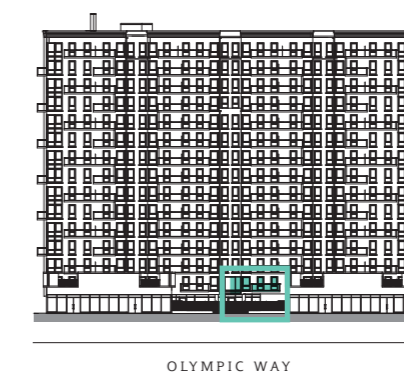
**Kitchen**  
10'4" x 6'9" (3160 x 2050mm)

**Bedroom**  
15'0" x 9'0" (4570 x 2750mm)

**Bathroom**  
7'7" x 6'8" (2300 x 2040mm)

**TOTAL AREA**  
552 sq ft (51.28 sq m)

**Balcony**  
13'4" x 5'0" (4070 x 1525mm)  
67 sq ft (6 sq m)



**Plot number (floor)**  
10 (1)

**Living**  
12'7" x 9'10" (3835 x 3000mm)

**Dining/kitchen**  
15'9" x 7'10" (4795 x 2400mm)

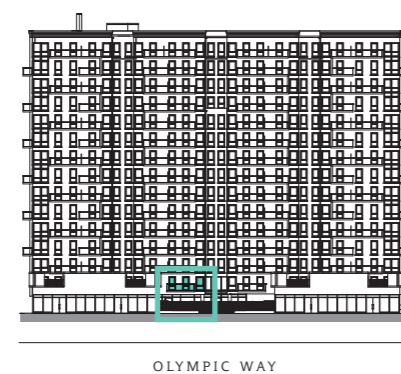
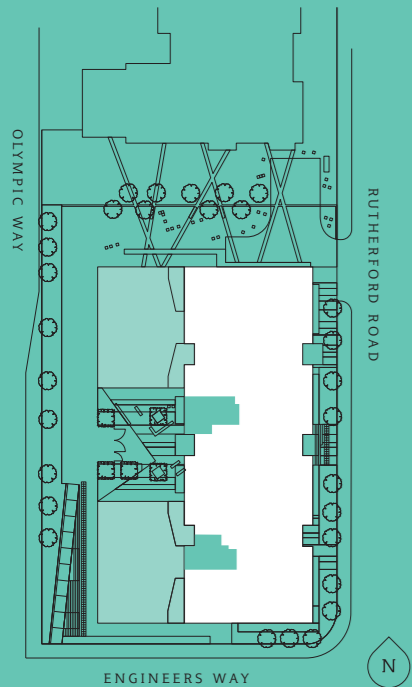
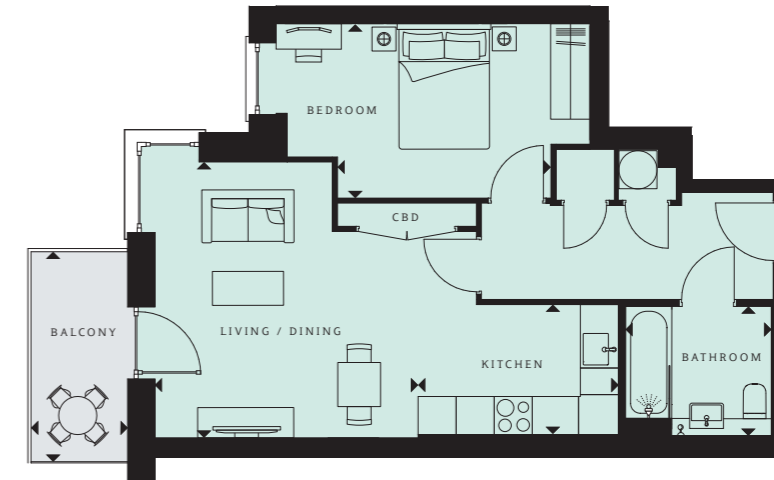
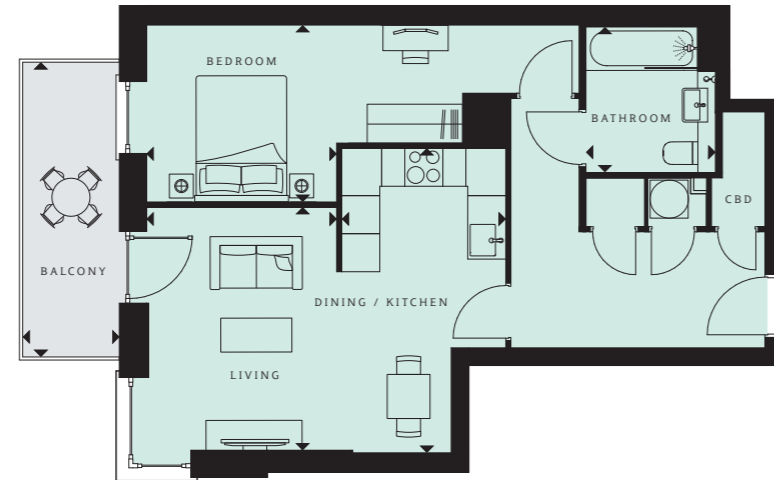
**Bedroom**  
22'7" x 9'2" (6890 x 2790mm)

**Bathroom**  
8'4" x 6'8" (2540 x 2040mm)

**TOTAL AREA**  
599 sq ft (55.66 sq m)

**Balcony**  
15'2" x 5'0" (4645 x 1525mm)  
76 sq ft (7 sq m)

# 1 bedroom apartments



**Plot number (floor)**  
11 (1)

**Living**  
12'7" x 9'10" (3835 x 3000mm)

**Dining/kitchen**  
15'9" x 8'6" (4805 x 2585mm)

**Bedroom**  
22'5" x 9'0" (6820 x 2750mm)

**Bathroom**  
7'7" x 6'8" (2300 x 2040mm)

**TOTAL AREA**  
608 sq ft (56.45 sq m)

**Balcony**  
15'2" x 5'0" (4645 x 1525mm)  
76 sq ft (7 sq m)

**Plot number (floor)**  
22 (2) 36 (3) 50 (4) 65 (5)  
80 (6) 95 (7) 110 (8) 125 (9)  
141 (10) 157 (11) 173 (12)  
189 (13) 205 (14)

**Living/dining**  
14'3" x 13'7" (4350 x 4150mm)

**Kitchen**  
10'4" x 6'9" (3160 x 2050mm)

**Bedroom**  
15'8" x 9'0" (4775 x 2750mm)

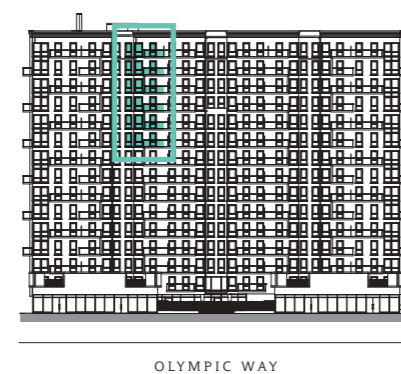
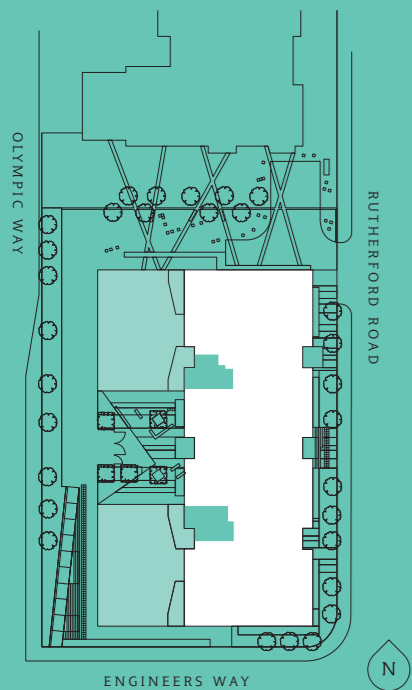
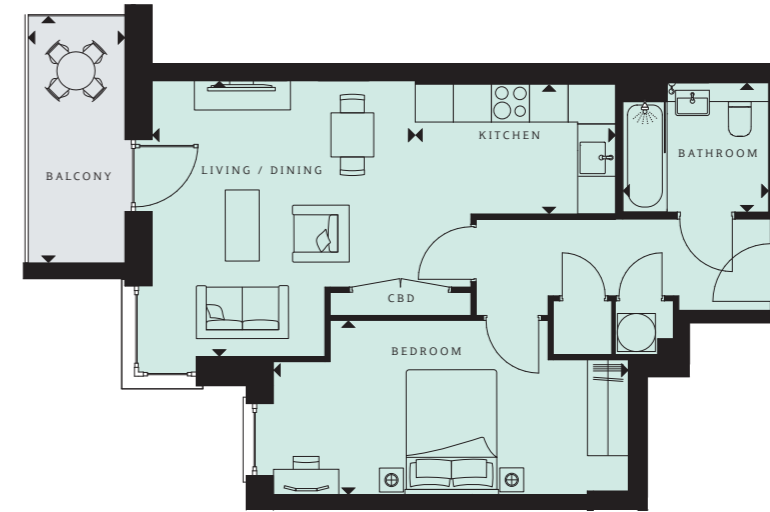
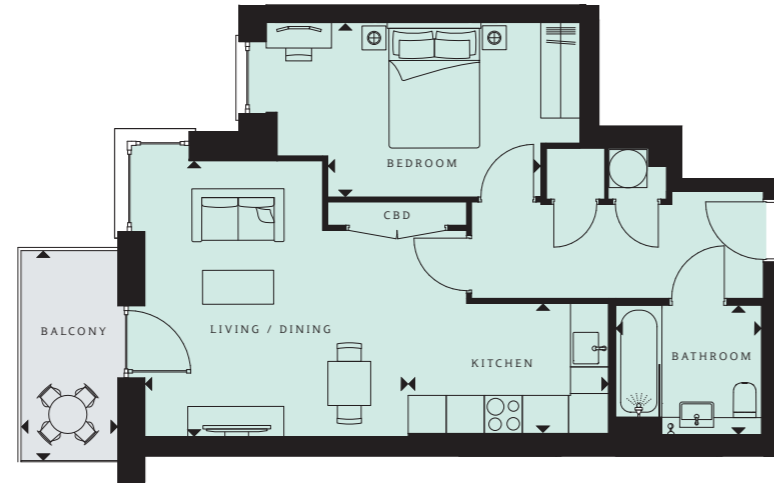
**Bathroom**  
7'7" x 6'8" (2300 x 2040mm)

**TOTAL AREA**  
568 sq ft (52.73 sq m)

**Balcony**  
10'9" x 5'0" (3310 x 1525mm)  
54 sq ft (5 sq m)



# 1 bedroom apartments



**Plot number (floor)**  
 129 (9) 145 (10) 161 (11)  
 177 (12) 193 (13) 209 (14)

**Living/dining**  
 14'3" x 13'7" (4350 x 4150mm)

**Kitchen**  
 10'4" x 6'9" (3160 x 2050mm)

**Bedroom**  
 16'2" x 9'0" (4940 x 2750mm)

**Bathroom**  
 7'7" x 6'8" (2300 x 2040mm)

**TOTAL AREA**  
 569 sq ft (52.85 sq m)

**Balcony**  
 13'4" x 5'0" (4070 x 1525mm)  
 67 sq ft (6 sq m)

**Plot number (floor)**  
 23 (2) 37 (3) 51 (4) 66 (5)  
 81 (6) 96 (7) 111 (8) 126 (9)  
 142 (10) 158 (11) 174 (12)  
 190 (13) 206 (14)

**Living/dining**  
 14'3" x 13'7" (4350 x 4150mm)

**Kitchen**  
 10'4" x 6'9" (3160 x 2050mm)

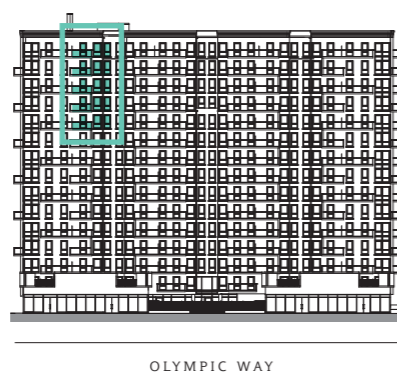
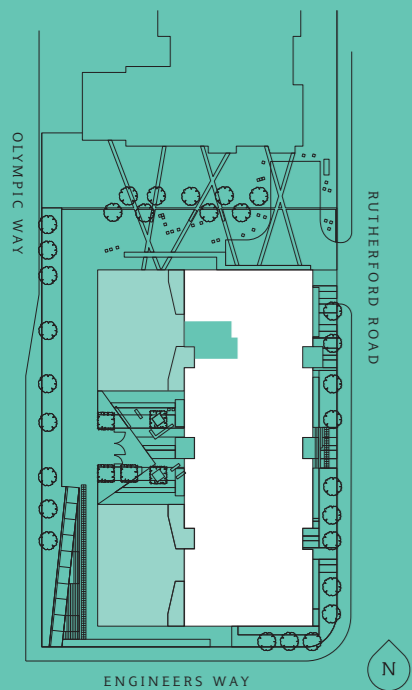
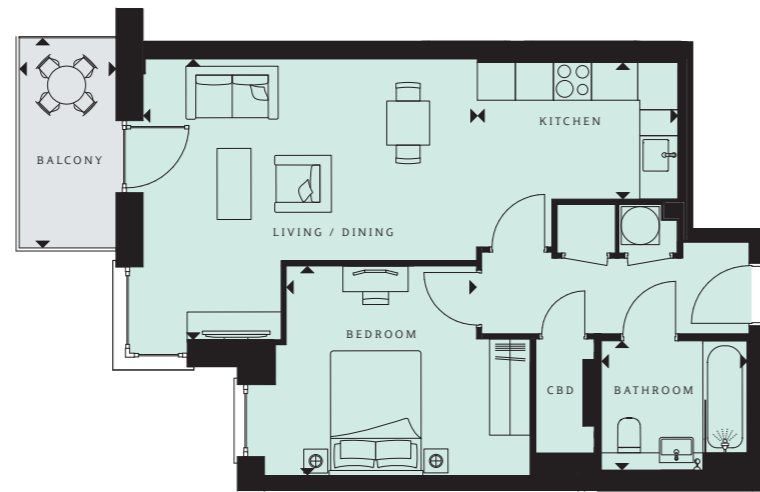
**Bedroom**  
 18'4" x 9'0" (5600 x 2750mm)

**Bathroom**  
 7'7" x 6'8" (2300 x 2040mm)

**TOTAL AREA**  
 576 sq ft (53.54 sq m)

**Balcony**  
 12'8" x 5'0" (3915 x 1525mm)  
 64 sq ft (6 sq m)

# 1 bedroom apartments



**Plot number (floor)**  
 146 (10) 162 (11) 178 (12)  
 194 (13) 210 (14)

**Living/dining**  
 17'3" x 14'6" (5270 x 4425mm)

**Kitchen**  
 10'4" x 7'1" (3160 x 2160mm)

**Bedroom**  
 10'10" x 9'10" (3310 x 3000mm)

**Bathroom**  
 7'7" x 6'8" (2300 x 2040mm)

**TOTAL AREA**  
 596 sq ft (55.36 sq m)

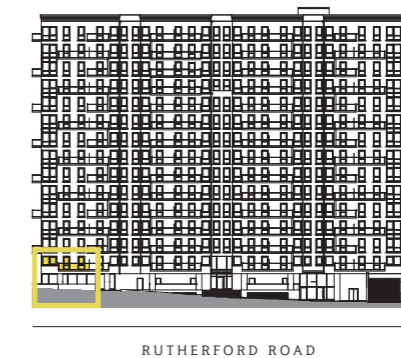
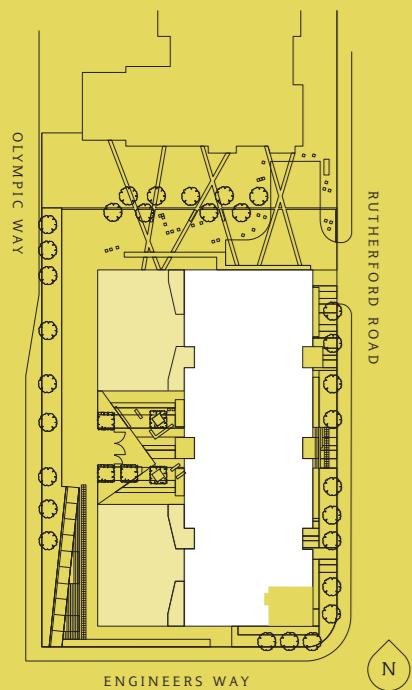
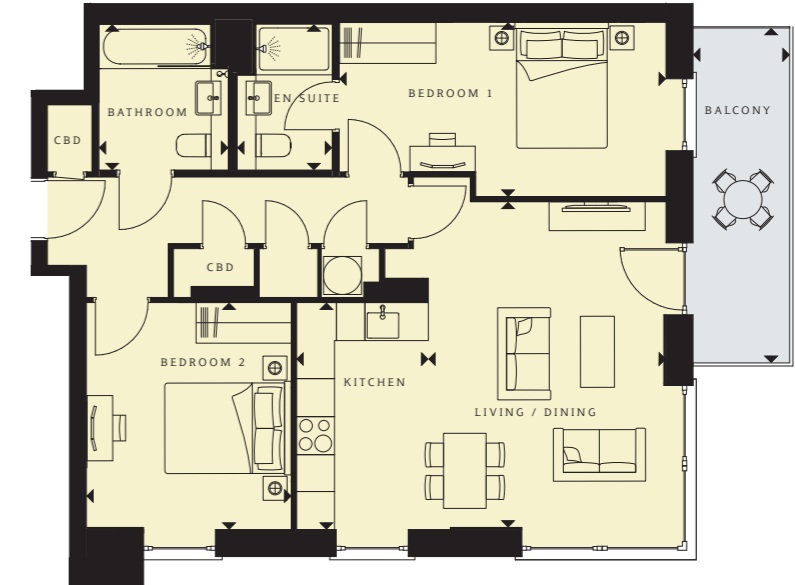
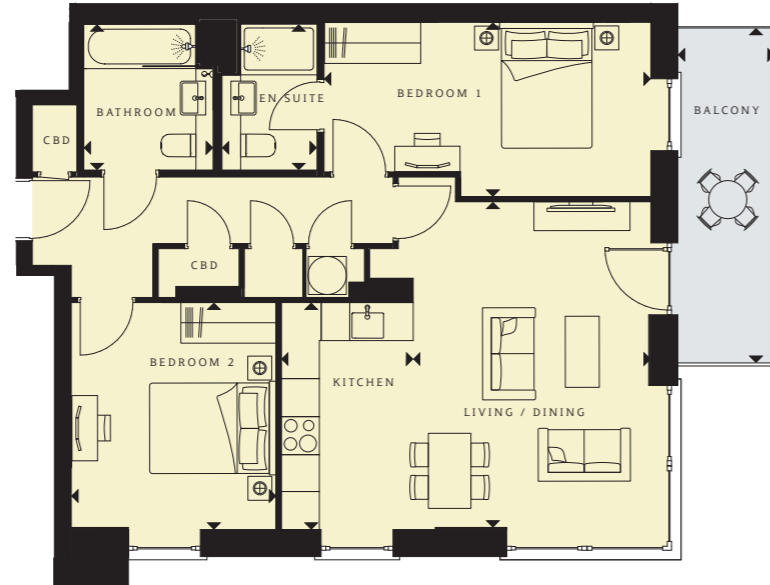
**Balcony**  
 10'9" x 5'0" (3310 x 1525mm)  
 54 sq ft (5 sq m)



Interior photography is from a previous Barratt London development with a similar specification.



# 2 bedroom apartments



**Plot number (floor)**  
 34 (3) 63 (5) 93 (7) 123 (9)  
 155 (11) 187 (13)

---

**Living/dining**  
 16'10" x 12'3" (5140 x 3745mm)

**Kitchen**  
 11'9" x 6'10" (3580 x 2080mm)

**Bedroom 1**  
 16'11" x 9'0" (5150 x 2750mm)

**Bedroom 2**  
 11'9" x 10'7" (3580 x 3225mm)

**Bathroom**  
 7'7" x 6'8" (2300 x 2040mm)

**Ensuite**  
 7'7" x 4'11" (2300 x 1500mm)

**TOTAL AREA**  
 800 sq ft (74.33 sq m)

**Balcony**  
 17'3" x 5'0" (5285 x 1525mm)  
 87 sq ft (8 sq m)

**Plot number (floor)**  
 7 (1)

---

**Living/dining**  
 16'10" x 12'3" (5140 x 3745mm)

**Kitchen**  
 11'9" x 6'10" (3580 x 2080mm)

**Bedroom 1**  
 16'11" x 9'0" (5150 x 2750mm)

**Bedroom 2**  
 11'9" x 10'7" (3580 x 3225mm)

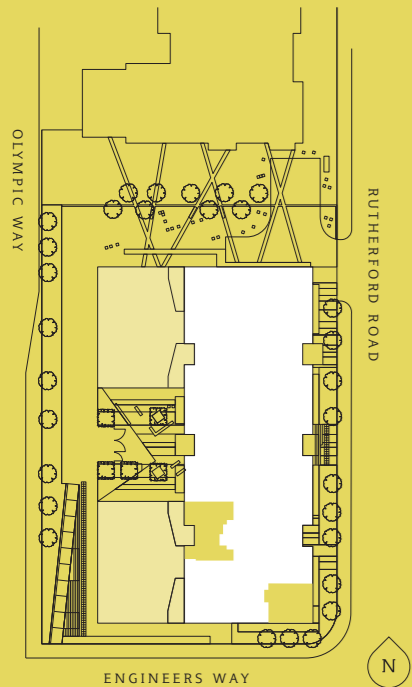
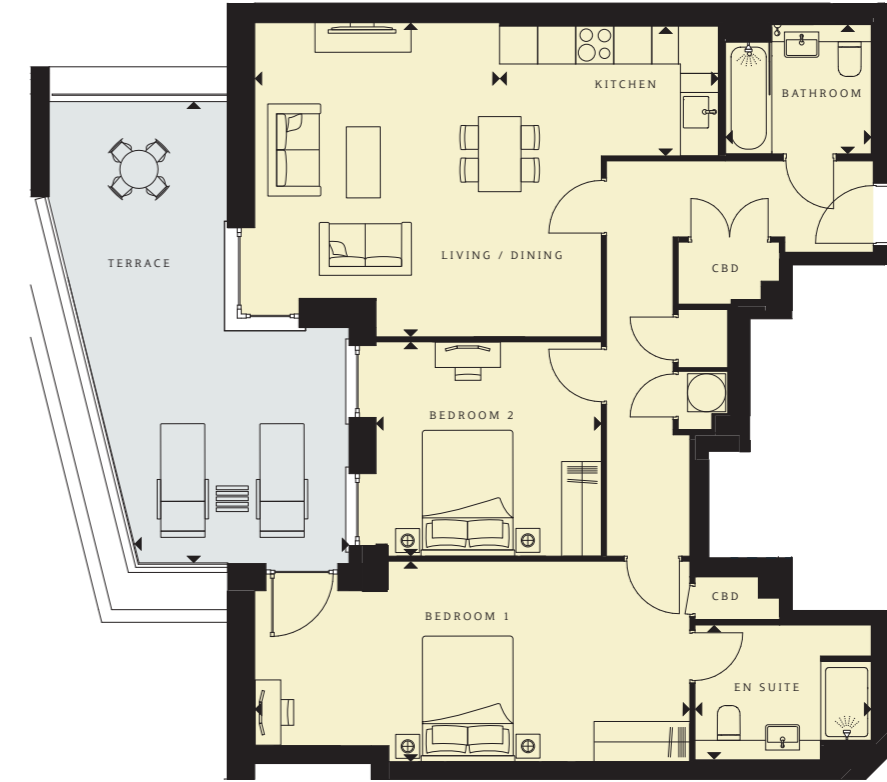
**Bathroom**  
 7'7" x 6'8" (2300 x 2040mm)

**Ensuite**  
 7'7" x 4'11" (2300 x 1500mm)

**TOTAL AREA**  
 800 sq ft (74.33 sq m)

**Balcony**  
 17'3" x 5'0" (5285 x 1525mm)  
 87 sq ft (8 sq m)

# 2 bedroom apartments



**Plot number (floor)**  
20 (2) 48 (4) 78 (6) 108 (8)  
139 (10) 171 (12) 203 (14)

**Living/dining**  
16'10" x 12'3" (5140 x 3745mm)

**Kitchen**  
11'9" x 6'10" (3580 x 2080mm)

**Bedroom 1**  
16'11" x 9'0" (5150 x 2750mm)

**Bedroom 2**  
11'9" x 10'7" (3580 x 3225mm)

**Bathroom**  
7'7" x 6'8" (2300 x 2040mm)

**Ensuite**  
7'7" x 4'11" (2300 x 1500mm)

**TOTAL AREA**  
800 sq ft (74.33 sq m)

**Balcony**  
17'3" x 5'0" (5285 x 1525mm)  
87 sq ft (8 sq m)

**Plot number (floor)**  
9 (1)

**Living/dining**  
16'3" x 12'8" (4955 x 3860mm)

**Kitchen**  
11'4" x 6'9" (3450 x 2050mm)

**Bedroom 1**  
22'6" x 10'4" (6860 x 3160mm)

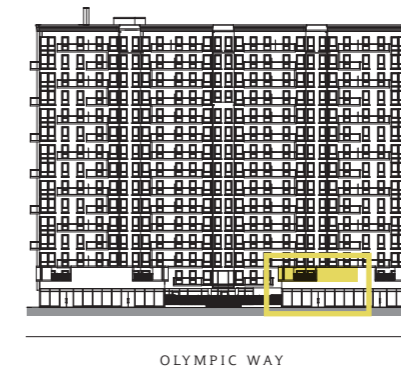
**Bedroom 2**  
11'8" x 11'1" (3555 x 3380mm)

**Bathroom**  
7'7" x 6'8" (2300 x 2040mm)

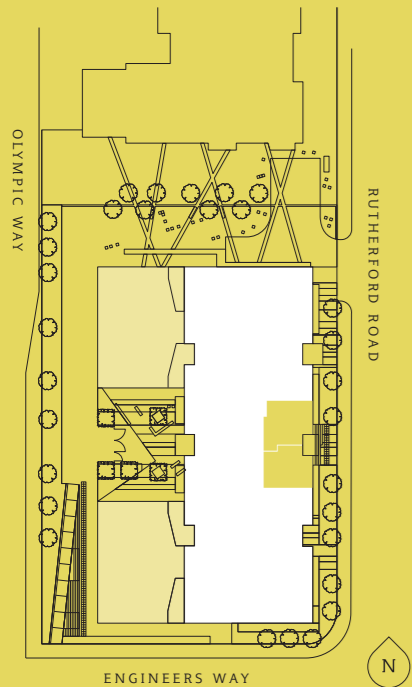
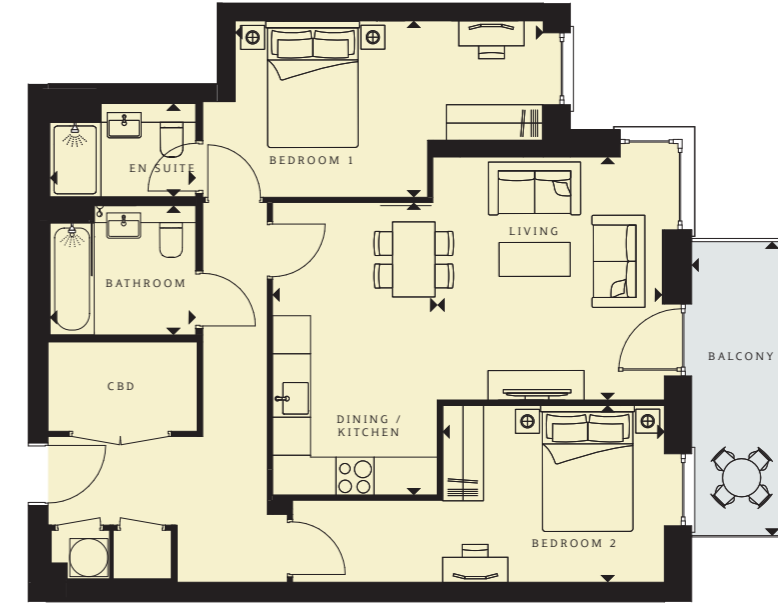
**Ensuite**  
9'1" x 7'0" (2780 x 2125mm)

**TOTAL AREA**  
977 sq ft (90.72 sq m)

**Terrace**  
23'7" x 5'0" (7275 x 1525mm)  
253 sq ft (24 sq m)



# 2 bedroom apartments



**Plot number (floor)**  
16 (2) 30 (3) 44 (4) 59 (5) 74 (6)  
89 (7) 104 (8) 119 (9) 135 (10)

**Living/dining**  
12'5" x 10'9" (3775 x 3270mm)

**Kitchen**  
11'4" x 9'4" (3450 x 2855mm)

**Bedroom 1**  
29'9" x 9'4" (9070 x 2850mm)

**Bedroom 2**  
16'7" x 9'11" (5060 x 3035mm)

**Bathroom**  
7'11" x 8'7" (2610 x 2420mm)

**Ensuite**  
7'7" x 4'11" (2300 x 1500mm)

**TOTAL AREA**  
896 sq ft (83.21 sq m)

**Balcony**  
15'2" x 5'0" (4635 x 1525mm)  
76 sq ft (7 sq m)

**Plot number (floor)**  
17 (2) 31 (3) 45 (4) 60 (5) 75 (6)  
90 (7) 105 (8) 120 (9) 136 (10)

**Living**  
12'7" x 11'8" (3835 x 3550mm)

**Dining/kitchen**  
15'2" x 8'6" (4615 x 2600mm)

**Bedroom 1**  
15'11" x 9'2" (4860 x 2795mm)

**Bedroom 2**  
19'3" x 9'2" (5865 x 2795mm)

**Bathroom**  
7'7" x 6'8" (2300 x 2040mm)

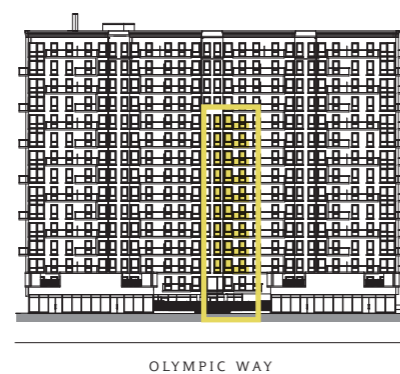
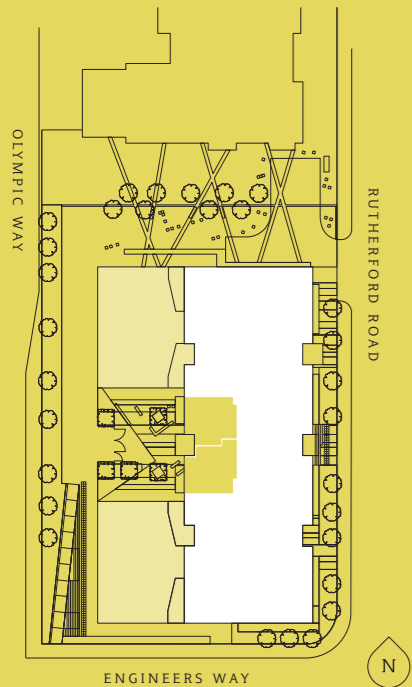
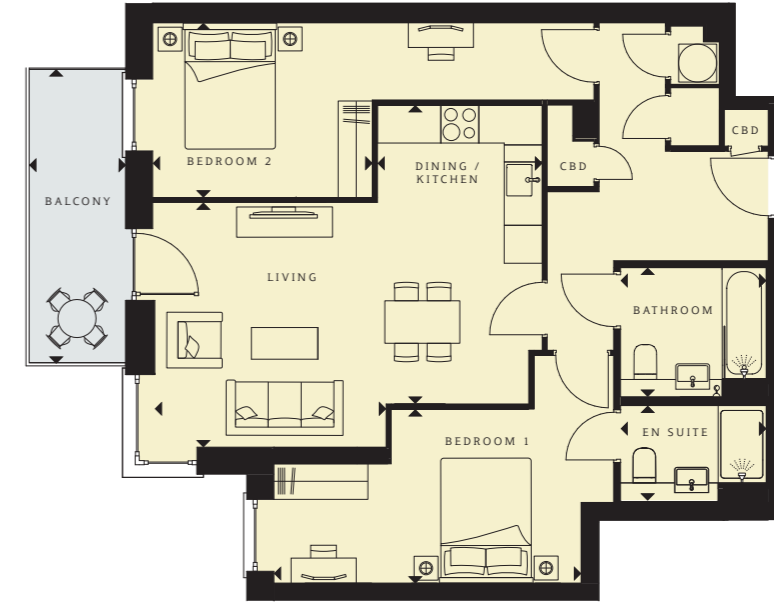
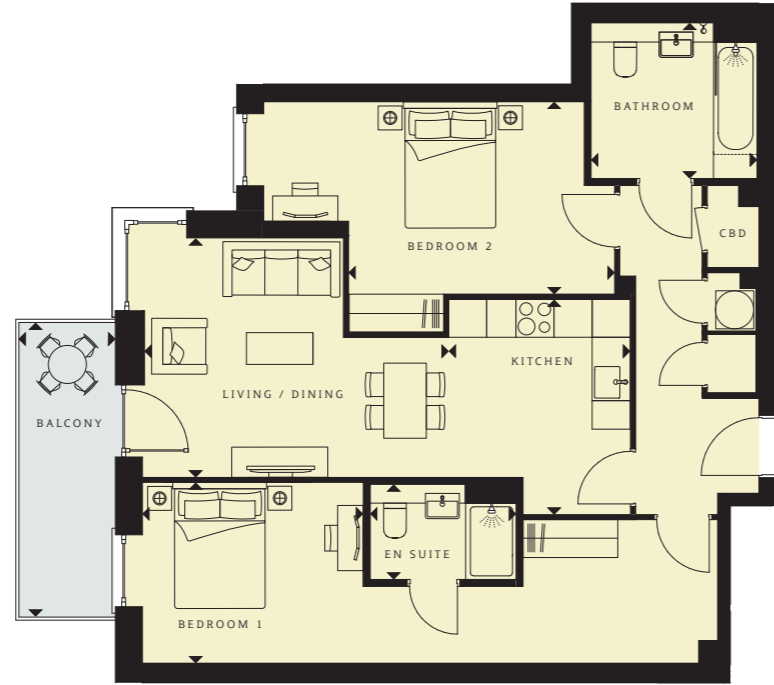
**Ensuite**  
7'7" x 4'11" (2300 x 1500mm)

**TOTAL AREA**  
841 sq ft (78.17 sq m)

**Balcony**  
15'2" x 5'0" (4635 x 1525mm)  
76 sq ft (7 sq m)



# 2 bedroom apartments



**Plot number (floor)**  
24 (2) 38 (3) 52 (4) 67 (5) 82 (6)  
97 (7) 112 (8) 127 (9) 143 (10)

**Living/dining**  
15'9" x 12'5" (4795 x 3775mm)

**Kitchen**  
11'2" x 9'5" (3400 x 2865mm)

**Bedroom 1**  
29'9" x 9'4" (9070 x 2850mm)

**Bedroom 2**  
18'2" x 9'11" (4195 x 3035mm)

**Bathroom**  
8'7" x 8'1" (2615 x 2455mm)

**Ensuite**  
7'7" x 4'11" (2300 x 1500mm)

**TOTAL AREA**  
900 sq ft (83.6 sq m)

**Balcony**  
15'2" x 5'0" (4635 x 1525mm)  
76 sq ft (7 sq m)

**Plot number (floor)**  
25 (2) 39 (3) 53 (4) 68 (5) 83 (6)  
98 (7) 113 (8) 128 (9) 144 (10)

**Living/dining**  
12'8" x 12'0" (3865 x 3650mm)

**Kitchen**  
15'6" x 8'6" (4725 x 2600)

**Bedroom 1**  
15'11" x 9'0" (4855 x 2750mm)

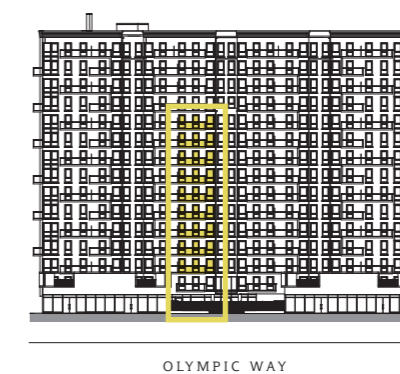
**Bedroom 2**  
22'10" x 9'1" (6970 x 2760mm)

**Bathroom**  
7'7" x 6'8" (2040 x 2300mm)

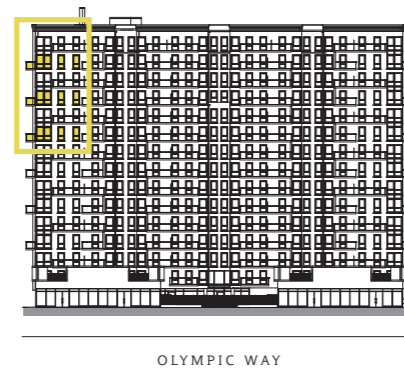
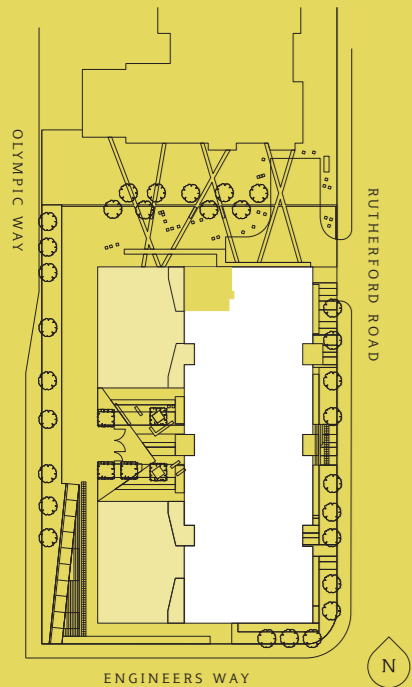
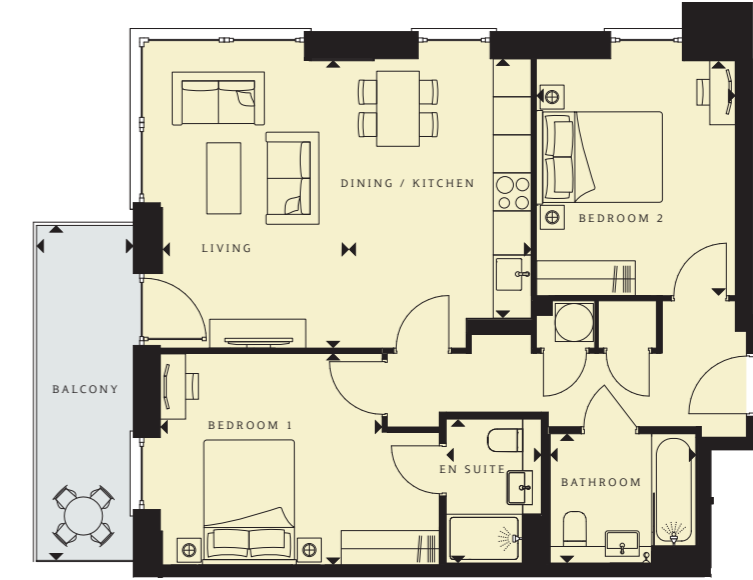
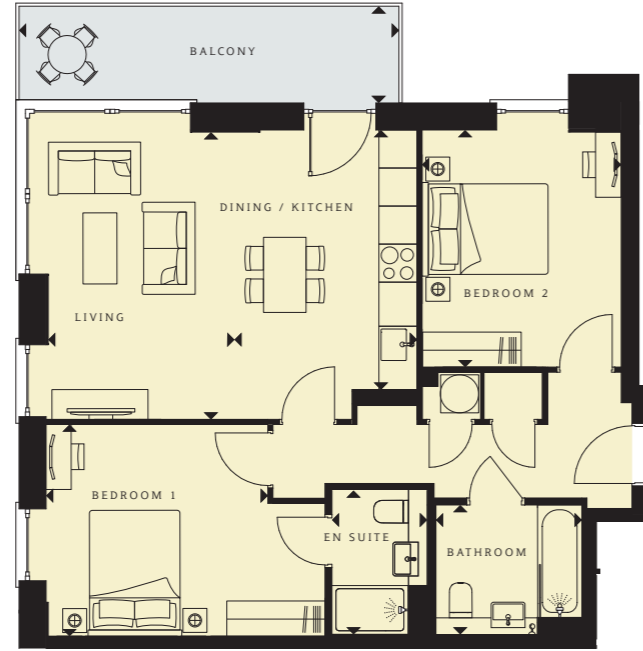
**Ensuite**  
7'7" x 4'11" (2300 x 1500mm)

**TOTAL AREA**  
831 sq ft (77.17 sq m)

**Balcony**  
15'2" x 5'0" (4635 x 1525mm)  
76 sq ft (7 sq m)



## 2 bedroom apartments



**Plot number (floor)**  
131 (9) 163 (11) 195 (13)

**Living/Dining**  
14'10" x 13'3" (4530 x 4030mm)

**Kitchen**  
13'5" x 5'10" (4095 x 1785mm)

**Bedroom 1**  
14'5" x 10'11" (4395 x 3340mm)

**Bedroom 2**  
12'2" x 10'4" (3705 x 3140mm)

**Bathroom**  
7'7" x 6'8" (2300 x 2040mm)

**Ensuite**  
7'7" x 4'11" (2300 x 1500mm)

**TOTAL AREA**  
768 sq ft (71.37 sq m)

**Balcony**  
19'7" x 5'0" (5990 x 1525mm)  
98 sq ft (9 sq m)

**Plot number (floor)**  
147 (10) 179 (12) 211 (14)

**Living/Dining**  
14'10" x 13'3" (4530 x 4030mm)

**Kitchen**  
13'5" x 5'10" (4095 x 1785mm)

**Bedroom 1**  
14'5" x 10'11" (4395 x 3340mm)

**Bedroom 2**  
12'2" x 10'4" (3705 x 3140mm)

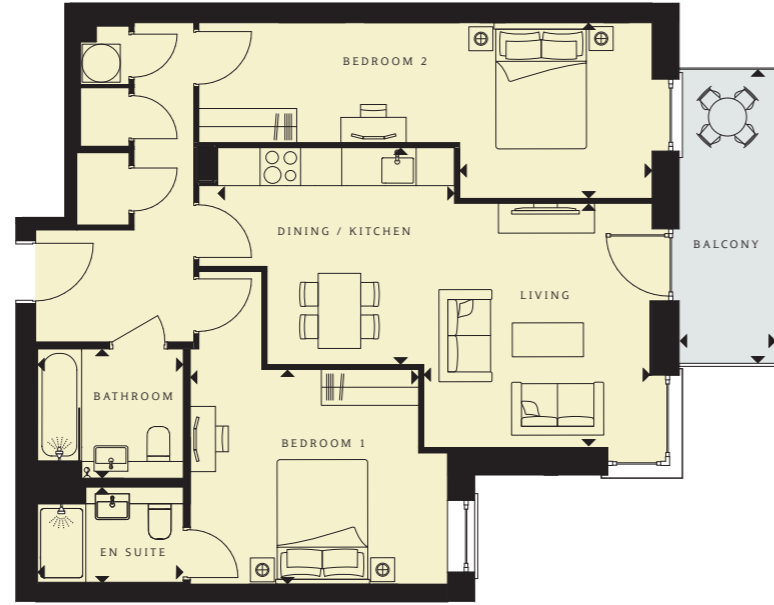
**Bathroom**  
7'7" x 6'8" (2300 x 2040mm)

**Ensuite**  
7'7" x 4'11" (2300 x 1500mm)

**TOTAL AREA**  
768 sq ft (71.37 sq m)

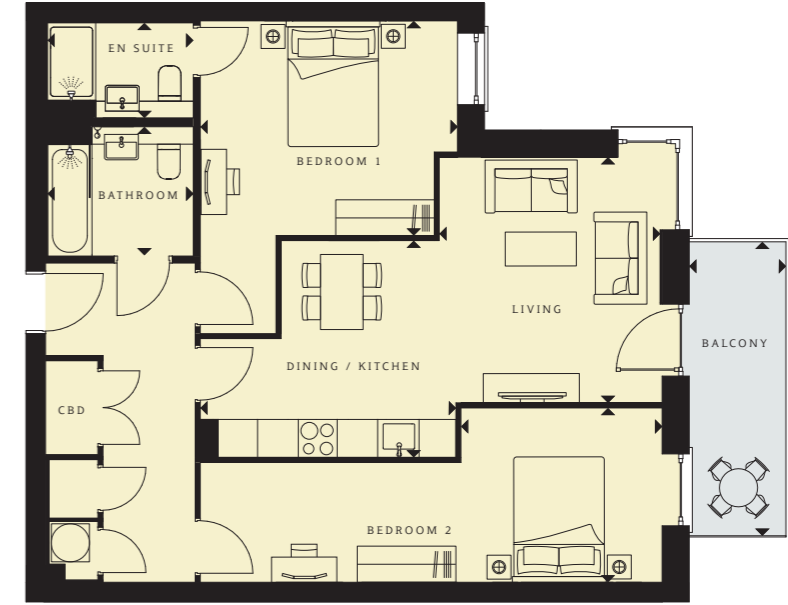
**Balcony**  
19'7" x 5'0" (5990 x 1525mm)  
98 sq ft (9 sq m)

# 2 bedroom apartments



**Plot number (floor)**  
151 (11) 167 (12) 183 (13)  
199 (14)

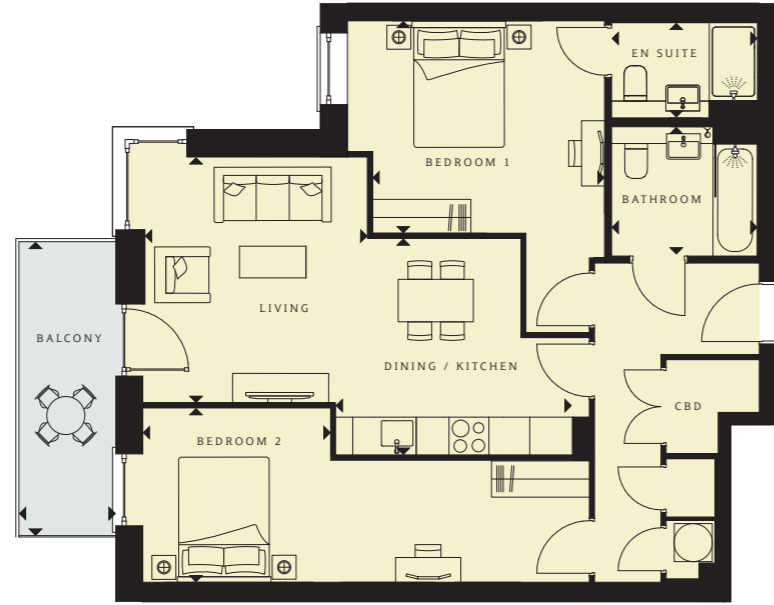
- Living**  
12'8" x 11'9" (3855 x 3570mm)
- Dining/kitchen**  
12'3" x 11'3" (3735 x 3420mm)
- Bedroom 1**  
13'4" x 11'1" (4055 x 3385mm)
- Bedroom 2**  
23'5" x 9'1" (7145 x 2770mm)
- Bathroom**  
7'7" x 6'8" (2300 x 2040mm)
- Ensuite**  
7'7" x 4'11" (2300 x 1500mm)
- TOTAL AREA**  
829 sq ft (76.98 sq m)
- Balcony**  
15'2" x 5'0" (4635 x 1525mm)  
76 sq ft (7 sq m)



**Plot number (floor)**  
152 (11) 168 (12) 184 (13)  
200 (14)

- Living**  
12'9" x 11'5" (3875 x 3480mm)
- Dining/kitchen**  
13'3" x 11'3" (4030 x 3420mm)
- Bedroom 1**  
13'4" x 11'1" (4055 x 3385mm)
- Bedroom 2**  
23'11" x 9'0" (7280 x 2750mm)
- Bathroom**  
7'7" x 6'8" (2300 x 2040mm)
- Ensuite**  
7'7" x 4'11" (2300 x 1500mm)
- TOTAL AREA**  
852 sq ft (79.11 sq m)
- Balcony**  
15'2" x 5'0" (4635 x 1525mm)  
76 sq ft (7 sq m)

## 2 bedroom apartments



**Plot number (floor)**  
159 (11) 175 (12) 191 (13)  
207 (14)

**Living**  
12'9" x 11'6" (3875 x 3505mm)

**Dining/kitchen**  
12'3" x 11'3" (3735 x 3420mm)

**Bedroom 1**  
12'0" x 11'0" (3660 x 3350mm)

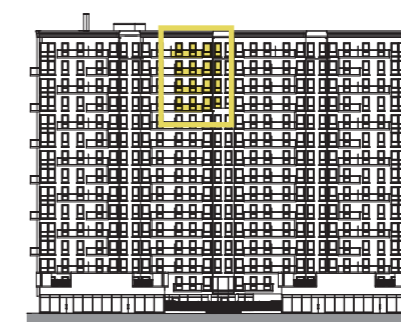
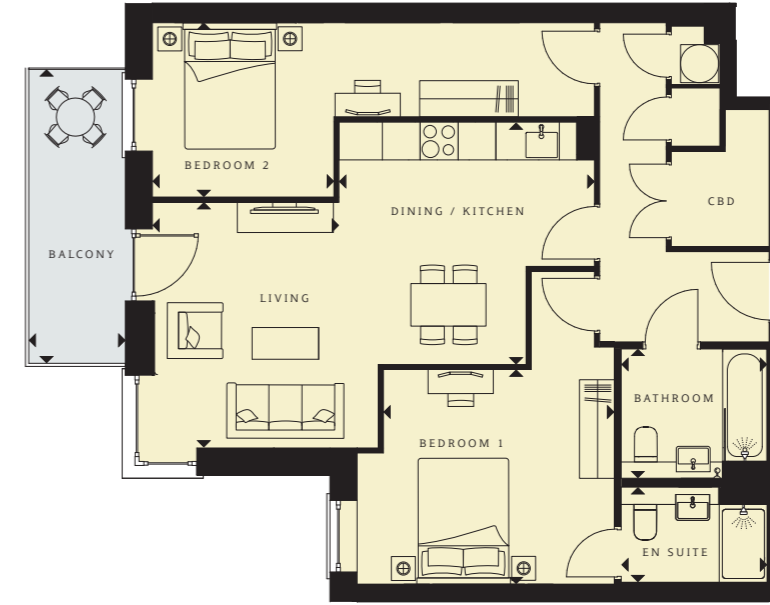
**Bedroom 2**  
23'1" x 9'0" (7040 x 2750mm)

**Bathroom**  
7'7" x 6'8" (2300 x 2040mm)

**Ensuite**  
7'7" x 4'11" (2300 x 1500mm)

**TOTAL AREA**  
833 sq ft (77.37 sq m)

**Balcony**  
15'2" x 5'0" (4635 x 1525mm)  
74 sq ft (7 sq m)



**Plot number (floor)**  
160 (11) 176 (12) 192 (13)  
208 (14)

**Living**  
12'9" x 9'8" (3875 x 2940mm)

**Dining/kitchen**  
13'3" x 12'7" (4030 x 3825mm)

**Bedroom 1**  
11'11" x 11'1" (3640 x 3385mm)

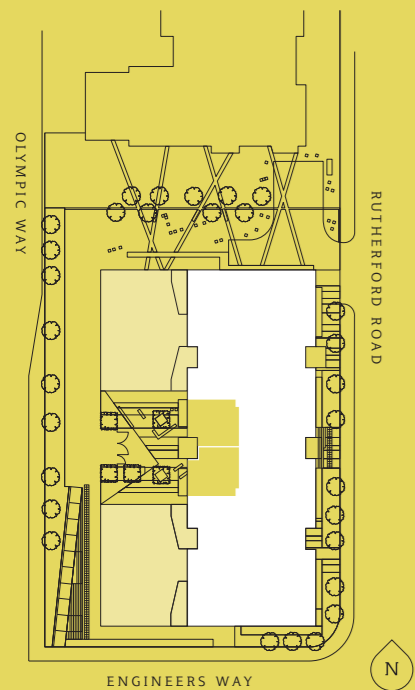
**Bedroom 2**  
22'10" x 9'0" (6970 x 2750mm)

**Bathroom**  
7'7" x 6'8" (2300 x 2040mm)

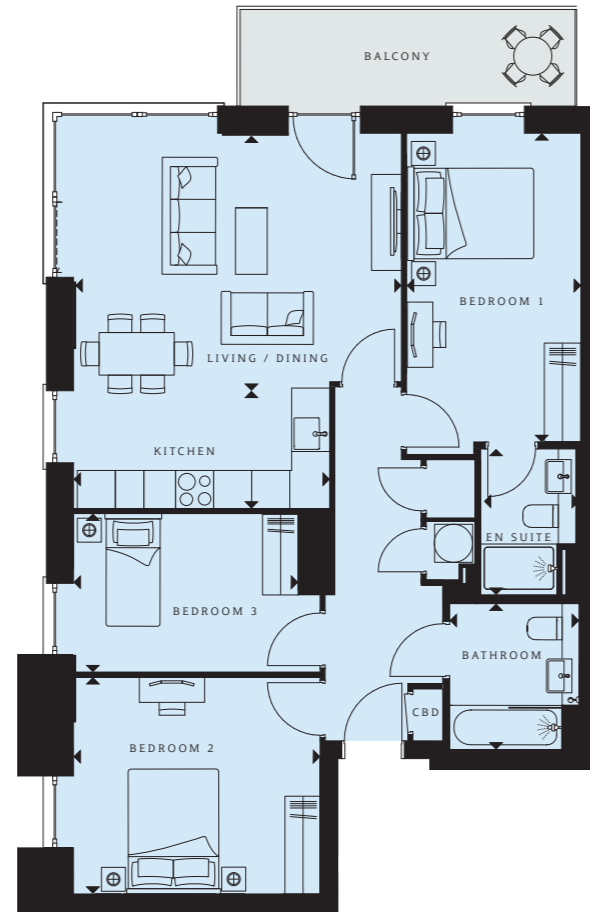
**Ensuite**  
7'7" x 4'11" (2300 x 1500mm)

**TOTAL AREA**  
841 sq ft (78.12 sq m)

**Balcony**  
15'2" x 5'0" (4635 x 1525mm)  
74 sq ft (7 sq m)



# 3 bedroom apartments



**Plot number (floor)**  
 21 (2) 49 (4) 79 (6) 109 (8)  
 140 (10) 172 (12) 204 (14)

**Living/dining**  
 17'0" x 13'3" (5170 x 4030mm)

**Kitchen**  
 13'3" x 6'1" (4040 x 1860mm)

**Bedroom 1**  
 16'0" x 9'0" (4870 x 2750mm)

**Bedroom 2**  
 12'9" x 11'2" (3890 x 3415mm)

**Bedroom 3**  
 11'7" x 8'2" (3540 x 2500mm)

**Bathroom**  
 7'7" x 6'8" (2300 x 2040mm)

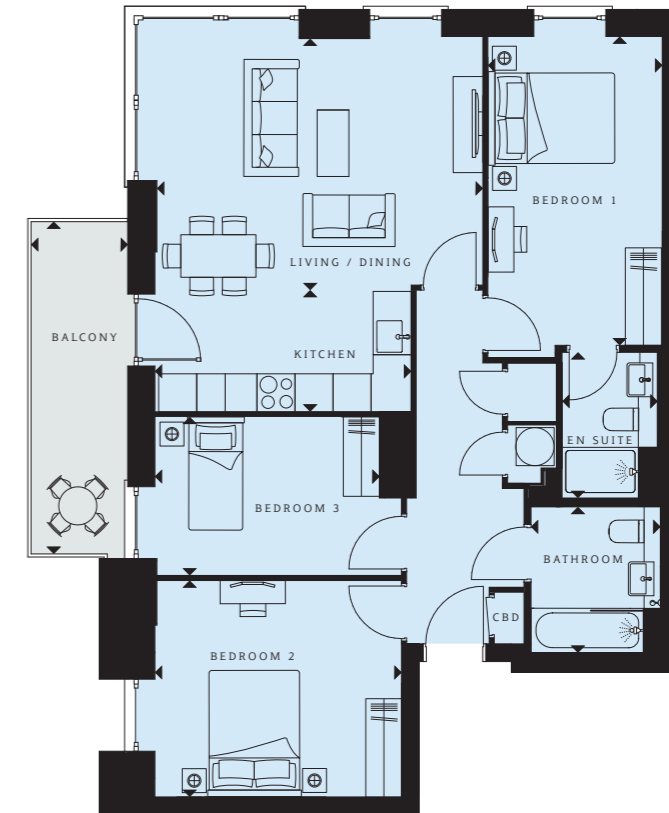
**Ensuite**  
 7'7" x 4'11" (2300 x 1500mm)

**TOTAL AREA**  
 929 sq ft (86.29 sq m)

**Balcony**  
 17'3" x 5'0" (5285 x 1525mm)  
 87 sq ft (8 sq m)



OLYMPIC WAY



**Plot number (floor)**  
 35 (3) 64 (5) 94 (7) 124 (9)  
 156 (11) 188 (13)

**Living/dining**  
 17'0" x 13'3" (5170 x 4030mm)

**Kitchen**  
 13'3" x 6'1" (4040 x 1860mm)

**Bedroom 1**  
 16'0" x 9'0" (4870 x 2750mm)

**Bedroom 2**  
 12'9" x 11'2" (3890 x 3415mm)

**Bedroom 3**  
 11'7" x 8'2" (3540 x 2500mm)

**Bathroom**  
 7'7" x 6'8" (2300 x 2040mm)

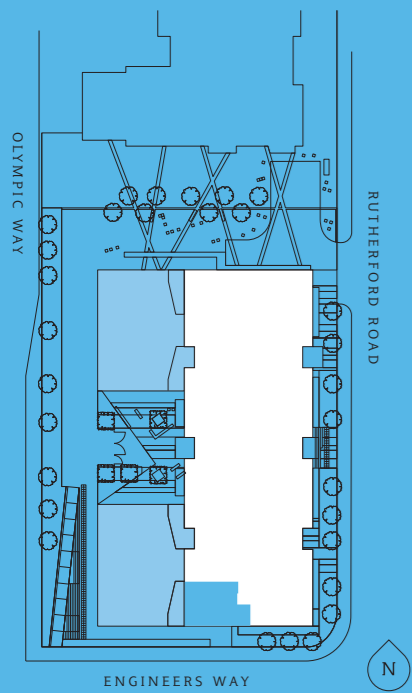
**Ensuite**  
 7'7" x 4'11" (2300 x 1500mm)

**TOTAL AREA**  
 929 sq ft (86.29 sq m)

**Balcony**  
 17'3" x 5'0" (5285 x 1525mm)  
 91 sq ft (8 sq m)

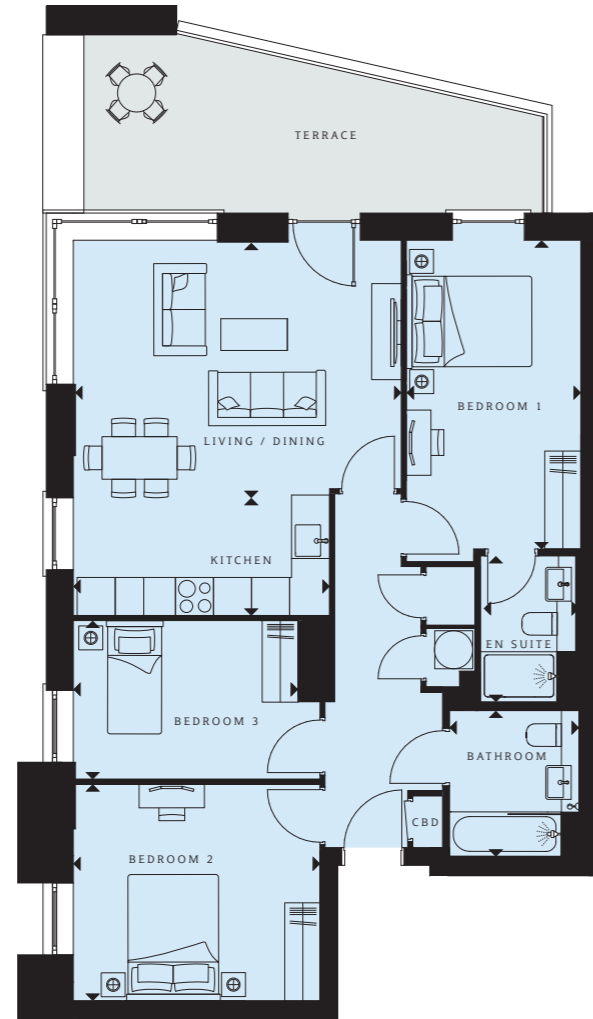


OLYMPIC WAY





# 3 bedroom apartments



**Plot number (floor)**  
8 (1)

**Living/dining**  
17'0" x 13'3" (5170 x 4030mm)

**Kitchen**  
13'3" x 6'1" (4040 x 1860mm)

**Bedroom 1**  
16'0" x 9'0" (4870 x 2750mm)

**Bedroom 2**  
12'9" x 11'2" (3890 x 3415mm)

**Bedroom 3**  
11'7" x 8'2" (3540 x 2500mm)

**Bathroom**  
7'7" x 6'8" (2300 x 2040mm)

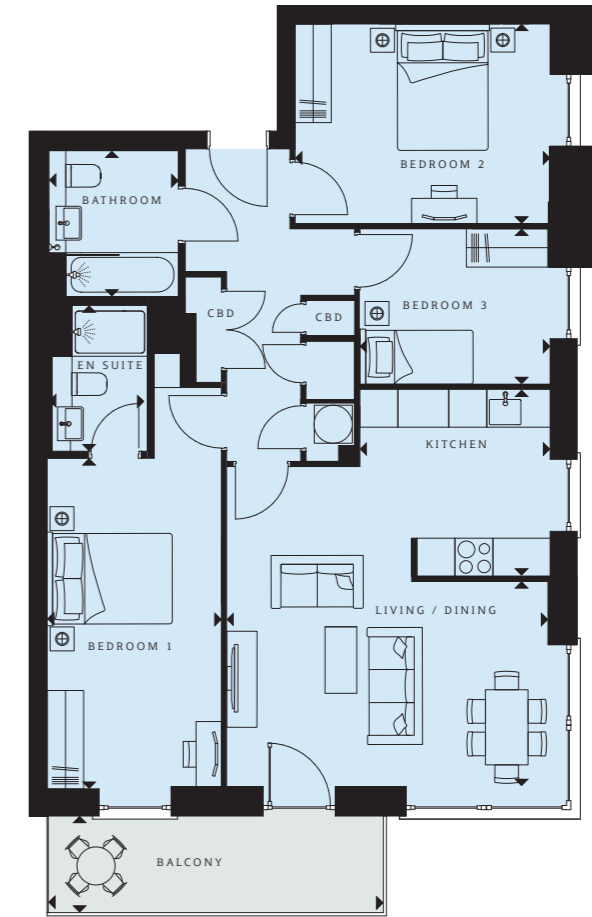
**Ensuite**  
7'7" x 4'11" (2300 x 1500mm)

**TOTAL AREA**  
929 sq ft (86.29 sq m)

**Balcony**  
17'3" x 5'0" (5285 x 1525mm)  
87 sq ft (8 sq m)



ENGINEERS WAY



**Plot number (floor)**  
148 (11) 180 (13)

**Living/dining**  
10'8" x 16'8" (3240 x 5070mm)

**Kitchen**  
9'10" x 9'8" (3000 x 2950mm)

**Bedroom 1**  
17'1" x 9'0" (5215 x 2750mm)

**Bedroom 2**  
13'2" x 10'4" (4020 x 3150mm)

**Bedroom 3**  
9'10" x 8'2" (3000 x 2480mm)

**Bathroom**  
7'7" x 6'8" (2300 x 2040mm)

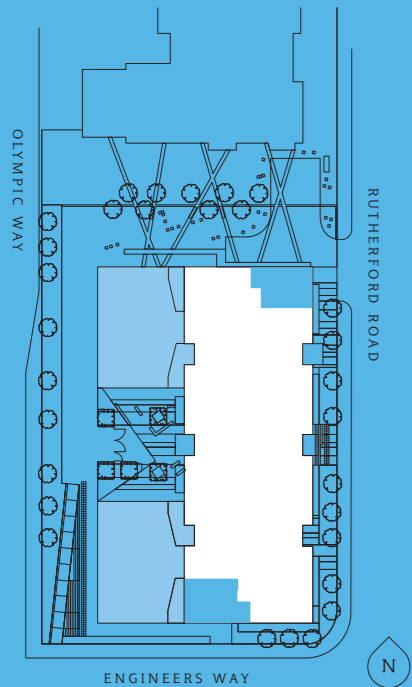
**Ensuite**  
7'7" x 4'11" (2300 x 1500mm)

**TOTAL AREA**  
945 sq ft (87.83 sq m)

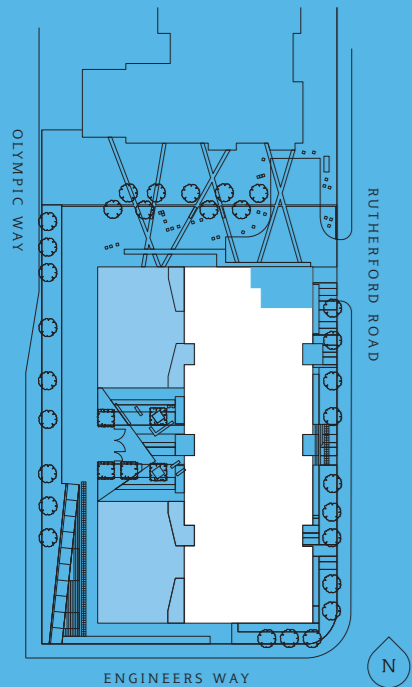
**Balcony**  
17'3" x 5'0" (5285 x 1525mm)  
87 sq ft (8 sq m)



RUTHERFORD ROAD



# 3 bedroom apartments



- Plot number (floor)**  
164 (12) 196 (14)
- Living/dining**  
10'8" x 16'8" (3240 x 5070mm)
- Kitchen**  
9'10" x 9'8" (3000 x 2950mm)
- Bedroom 1**  
17'0" x 9'0" (5180 x 2750mm)
- Bedroom 2**  
13'2" x 10'4" (4020 x 3150mm)
- Bedroom 3**  
9'10" x 8'2" (3000 x 2480mm)
- Bathroom**  
7'7" x 6'8" (2300 x 2040mm)
- Ensuite**  
7'7" x 4'11" (2300 x 1500mm)
- TOTAL AREA**  
945 sq ft (87.83 sq m)
- Balcony**  
19'7" x 5'0" (5285 x 1525mm)  
97 sq ft (9 sq m)

Interior photography is from a previous Barratt London development with a similar specification.



Interior photography is from a previous Barratt London development with a similar specification.



## Specification

General	Kitchens	Communal Areas
Dual hinge windows	Individually designed Nobila kitchens with soft close hinges and drawers	Interior designed entrance lobbies with individual post boxes
White internal doors with polished chrome ironmongery	Laminate worktop and upstand	Concierge located on ground floor
Fitted wardrobes – available as customer extra	Silestone worktop and upstand – available as customer extra	Landscaped podium garden
Zanussi washer/dryer	LED strip lighting under wall mounted units	<b>Security</b>
<b>Flooring</b>	Carron Pheonix brassware	Concierge service managed by BRAM
Amtico flooring to entrance hall, living and dining area and kitchen	Electrolux stainless steel oven, ceramic hob, microwave, fully integrated hood	Video entry phone
Carpet in bedrooms	Fully integrated Electrolux dishwasher and fridge/freezer	Fob entry system
Tiled floors and wall tiling to wet areas in bathroom and ensuite	<b>Bathrooms</b>	<b>Additional Facilities</b>
<b>Heating</b>	Energy sanitary ware	Fully equipped gym
Underfloor heating throughout	Semi recessed basin with single lever mixer	Basement gated parking (at additional cost, selected plots only)
<b>Electrical &amp; Lighting</b>	Grohe brassware	Secure cycle racks at ground level
Down lighters in kitchen, bathroom, ensuite and hallway	Aqualisa shower head mounted on riser rail	Proposed on-site convenience store and café/bar
Pendant lights in bedrooms, living and dining rooms	White heated towel rail	<b>General</b>
Cat 5 wiring	Mirror door cabinet above basin with integral lighting in main bathroom	10-year NHBC warranty
BT; TV/Sky+/FM in living area and master bedroom	Walnut veneer worktop	999 year lease
<b>External</b>		
	Private outside space: terrace or balcony	

The specification of the apartments is the anticipated specification at the date of print but may be subject to change as necessary and without notice. Any photographs or computer generated images are indicative of the quality and style of the specification and may not represent the actual fittings and furnishings at this development. Specification is not intended to form part of any contract or warranty unless specifically incorporated in writing into the contract. Images may include optional upgrades at additional cost. Wembley Park Gate is a marketing name only and may not be the designated postal address, which may be determined by The Post Office. September 2015.

# Why Barratt London?

## About Barratt London

Barratt London is one of the market-leading residential developers in the Capital. With over 30 years' experience, we've helped shape one of the world's most exciting, diverse and dynamic cities. We've crafted our portfolio to provide homes for all Londoners, from state-of-the-art apartments and penthouses in Westminster to riverside communities in Fulham, and complex, mixed-use regeneration schemes in Hendon.

## Five-star home builder

As part of Barratt Developments PLC, Barratt London is incredibly proud to have been recognised as a market leader for quality. We became the first major nationwide house builder to be awarded the maximum five-star rating, every year since 2009, in the annual Home Builders Federation Customer Satisfaction survey. For our customers, this gives peace of mind that when you buy a Barratt London home, you can be confident you are buying a high-quality home and you will receive unbeatable customer service.

## Ten-year NHBC Buildmark Warranty

When you move into a new-build home, you expect everything to be pristine and in working order. With a new Barratt London home you can expect it to stay that way, with the ten-year structural NHBC Buildmark Warranty and a two-year fixtures and fittings warranty.\*

## On-site property management

Barratt London's on-site property management company, Barratt Residential Asset Management (BRAM), will manage and maintain our developments. This means we take care of all of the communal areas, long after you've moved in, allowing you total peace of mind when you buy a new Barratt London home.

\*First two years covered by Builder Warranty and NHBC Guarantee or similar. Years three-ten covered by NHBC insurance or similar. Full exclusions and limitations can be found on the NHBC website. Available on virtually all of our developments. Your statutory rights are unaffected.



Lombard Wharf SW11



Aldgate Place E1



Camden Courtyards NW1



Greenland Place SE8

Enderby Wharf SE16

## The Consumer Code

The Consumer Code for Home Builders ("the Code"), which came into effect in April 2010, applies to all Home Builders registered with the UK's main new Home Warranty Bodies; NHBC, Premier Guarantee and LABC Warranty.

The Code gives protection and rights to purchasers of new Homes. It requires all new Home Buyers to be treated fairly and ensure they are fully informed about their purchase before and after they sign the contract.

The aim of the Code is for all new Home Buyers to:

- be treated fairly,
- know what levels of service to expect,
- be given reliable information about their purchase and their consumer rights before and after they move in, and
- know how to access speedy, low-cost dispute resolution arrangements to deal with complaints about breaches of the Code

The Code reinforces best practice among Home Builders to encourage a consistently high level of information and customer service. It builds on successful efforts already made by the industry to improve consumer satisfaction in recent years.

The Code covers every stage of the home-buying purchase – pre-contract, exchange of contract and during occupation.

As a 5 star housebuilder we are committed to the Consumer Code for Home Builders. For more information on the Consumer Code for Home Builders please visit [www.consumercode.co.uk](http://www.consumercode.co.uk)



---

## J O I N T H E L E G E N D S

---

+ 4 4 ( 0 ) 8 4 4 8 1 1 4 3 3 4

W E M B L E Y P A R K G A T E @ B A R R A T T L O N D O N . C O M  
B A R R A T T L O N D O N . C O M / W E M B L E Y P A R K G A T E

---

Computer generated images and development layouts are intended for illustrative purposes only and should be treated as general guidance only. Interior photography is from a previous Barratt London development with a similar specification. Images may include optional upgrades at additional cost. Individual features such as windows, brick and other materials' colours may vary, as may drainage, heating and electrical layouts. Development layout including parking arrangements, social/affordable housing, play areas and public open spaces may change to reflect changes in the planning permission for the development. Please speak to your solicitor to whom full details of any planning consents including layout plans will be available. Floorplans are intended to give a general indication of the proposed floor layout only. The dimensions are accurate to within + or - 50mm. Dimensions should not be used for carpet or flooring sizes, appliance spaces or items of furniture. Please ask our Sales Adviser for details of the treatments specified for individual plots. The specification of the apartments is the anticipated specification at the date of print but may be subject to change as necessary and without notice. Development layouts and landscaping, specification, dimensions and computer generated images are not intended to form part of any contract or warranty unless specifically incorporated in writing into the contract. Wembley Park Gate is a marketing name only and may not be the designated postal addresses, which may be determined by The Post Office. All information in this document is correct to the best of our knowledge at the time of going to print September 2015.