



Newbridge Hill  
Newbridge | Bath







**Summary**

A beautifully refurbished family house offering flexible living space spread over 3 floors; totaling over 2100 square feet of accommodation including the garage. This bay-fronted, 5 bedroom, semi-detached, Victorian property is located on Newbridge Hill, and has immediate access to the popular Chelsea Road area of Bath with its wide variety of shops and local amenities. This property has retained much of its period charm and includes the following: 2 receptions, 5 double bedrooms, 3 en-suites, family bathroom, separate cloakroom and utility, as well as the stunning open plan kitchen / dining / family room with double doors opening onto the rear garden. Outside at the front there are parking spaces for 3/4 cars and a detached garage to the side. At the rear, there is a westerly facing garden. The house has excellent access to the Royal United Hospital, Newbridge Primary School and is approximately a mile and a half from the city centre. Early viewing advised.





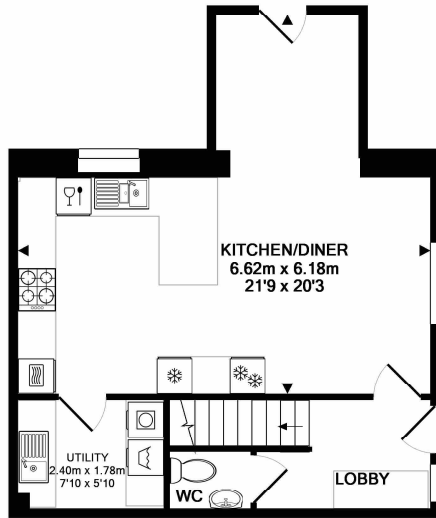
- 5 bedrooms
- Victorian semi detached
- Family house
- Refurbished throughout

- Garage & off-street parking
- 3 en-suites, family bathroom and downstairs WC
- Stunning open plan kitchen / dining / family room
- Utility room

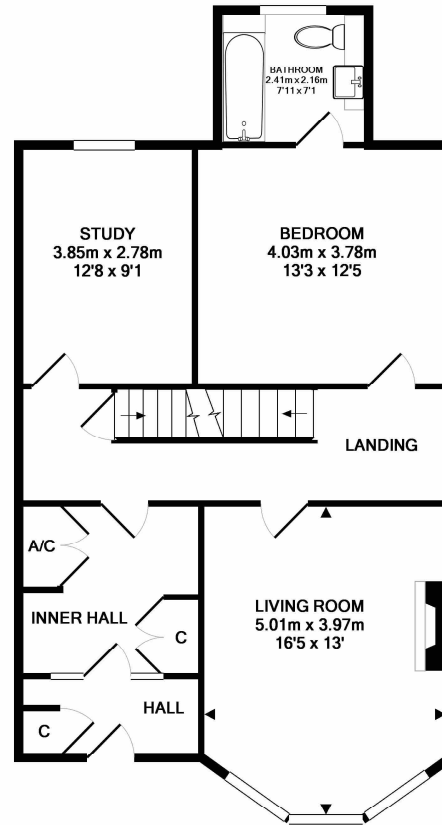
[nashandcobath.co.uk](http://nashandcobath.co.uk)

[enquiries@nashandcobath.co.uk](mailto:enquiries@nashandcobath.co.uk)

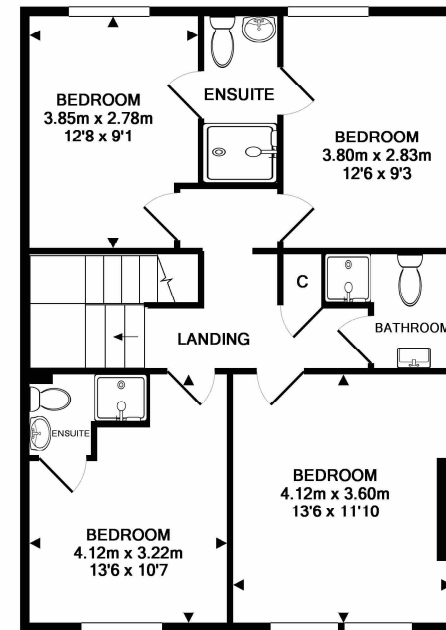




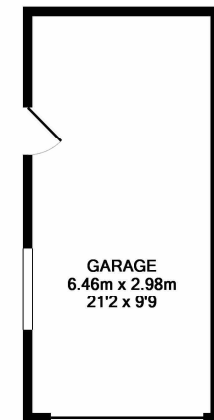
BASEMENT LEVEL  
APPROX. FLOOR  
AREA 42.7 SQ.M.  
(460 SQ.FT.)



GROUND FLOOR  
APPROX. FLOOR  
AREA 74.5 SQ.M.  
(802 SQ.FT.)



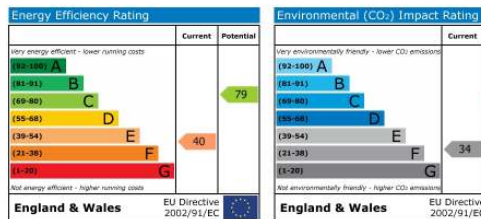
1ST FLOOR  
APPROX. FLOOR  
AREA 66.6 SQ.M.  
(717 SQ.FT.)



GARAGE  
6.46m x 2.98m  
21'2 x 9'9"

GARAGE  
APPROX. FLOOR  
AREA 19.3 SQ.M.  
(207 SQ.FT.)

TOTAL APPROX. FLOOR AREA 203.1 SQ.M. (2186 SQ.FT.)



Nash & Co is a trading name of Nash & Co (Bath) Ltd, a company registered in England & Wales under registration number 09405604 with its registered office at Stoke Hill House, 10 Warminster Road, Limpley Stoke, Bath BA2 7GL.

**Agents Note:** These particulars are set out as a general outline only for the guidance of intended purchasers and do not constitute an offer of contract or part thereof. For your information, the agent has not tested any apparatus, equipment, fixtures and fittings or services, so cannot verify they are in working order. A buyer is advised to obtain verification from the solicitor or surveyor. Please note that measurements are approximate only.