

HOUSES



**“SPACE AND LIGHT AND
ORDER. THOSE ARE
THE THINGS THAT MEN
NEED JUST AS MUCH
AS THEY NEED BREAD
OR A PLACE TO SLEEP.”**

LE CORBUSIER

H A L O

The seven elements of the Halo manifesto all come into play in the design and execution of the houses. Each internal layout has been carefully planned in line with our overarching theory that form follows function. Whatever your lifestyle and priorities, we have developed carefully considered layouts in order to maximise light and space and to ensure that all areas of your home will be a pleasure to live in. Whether you are looking for a three or four bedroom property, whether you want a garage, or if outdoor space is a priority, we want to demonstrate that we have considered both the detail and the design that will make these houses your home.



Photography of 4 and 5 bedroom homes at Halo.

SITE LAYOUT



3 Bedroom Houses

The Eddington
Houses 234 – 239

The Benjamin
Houses 177 – 183

The Croft
Houses 204, 206 & 208

The Cameron
Houses 185, 187 & 189

4 Bedroom Houses

The Selwyn
Houses 263 – 270

The Turner
Houses 251 – 262

The Hirsch
Houses 191 – 199

The Gallagher
Houses 203, 205, 207 & 209

The Davies
Houses 184, 186, 188 & 190

Affordable Housing

EXISTING PHASE

HALO

“LIGHT AND SPACIOUS LIVING IN A MODERN PROPERTY DESIGNED TO THE HIGHEST SPECIFICATION.”

ANDY VON BRADSKY,
PRP ARCHITECTS

THE DETAILS THAT WILL BRING YOUR HOME TO LIFE

KITCHEN & UTILITY ROOMS

The Wellman collection, from German designer-manufacturer The Alno Group, combines attention to detail with the highest quality materials and finishes.*

- Stone work surfaces with matching upstand and continuous glass splashback with integrated sockets
- White Laminate work surfaces with matching upstand to utility room
- oven and stainless steel Linea five burner gas hob
- SMEG fully integrated fridge freezer and dishwasher
- Space for a washing machine and tumble dryer where utility rooms are fitted
- Soft close doors and drawers and LED lighting to underside of wall units
- Low profile inset sink with Hansgrohe block mixer tap

BATHROOM, EN SUITE AND CLOAKROOM

Carefully selected sanitaryware, taps and fittings that combine functionality with aesthetic appeal*.

- Contemporary white Roca Gap sanitaryware
- Full height Saloni tiling to the bath and shower enclosure and half height to walls with sanitaryware
- Fitted mirrors
- Downlighters
- Spacia flooring by Amtico
- Hansgrohe mixer taps and concealed bath/shower mixer

FLOORING

- Engineered oak wood flooring to hallway, living/dining and kitchen areas
- Carpets to bedrooms, stairs and landing area

JOINERY

- Internal doors finished in a white satin
- White architraves with square edge door frames
- Satin chrome ironmongery
- Wardrobes by Draks with sliding glass doors to master bedrooms

DECORATION

- Internal walls painted in white throughout
- Window boards, internal door frames, skirtings and architraves painted with a white satin finish

CENTRAL HEATING AND ENERGY EFFICIENCY

- Underfloor gas central heating throughout all rooms, including thermostat controls
- Heated chrome towel rail to bathroom and en suite

ENVIRONMENTAL FEATURES

- Triple glazed windows
- Upgraded insulation
- Pull out recycling bins in kitchen
- Low energy lighting system
- Solar PV panels

ELECTRICAL

- Low energy downlighters fitted to the kitchen, bathroom, en suite and cloakroom areas. Pendant lighting fitted in all other rooms
- BT points installed in the living room and master bedroom with Satellite/SKY+ connections to the living room and bedroom 1 (subject to customer subscription to SKY)
- Shaver sockets fitted in all bathrooms and en suites alongside white recessed extractor fans
- Power and lighting fitted to the garage or carport as applicable

SECURITY AND PEACE OF MIND

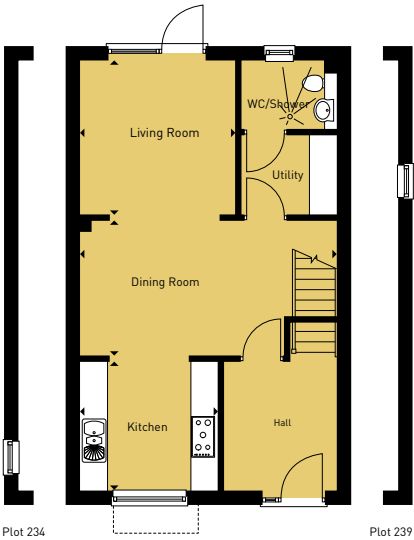
- External doors supplied with chrome multipoint locking system
- Sealed unit timber clad aluminium triple glazed windows and French doors provided with brushed steel ironmongery incorporating security locks
- Mains operated smoke and heat detectors fitted, alongside a smoke/heat/carbon monoxide detector

WARRANTY AND AFTERCARE

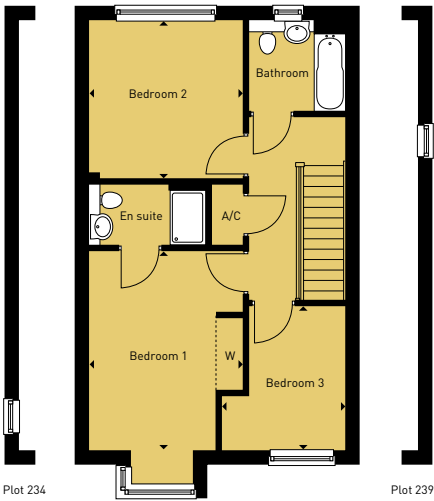
We want your move and settling into your new home to be stress-free and straightforward and for you to have peace of mind starting your new life. Your home comes complete with a NHBC 10 year warranty as well as a Crest Nicholson two year warranty. The home will be thoroughly demonstrated to you prior to hand over and we are more than happy to answer any questions.

*Exact specification may vary between homes and no choice is available across kitchens. Please consult your Sales Adviser for details.

THE EDDINGTON
Three bedroom house



Ground Floor



First Floor

House numbers 234 – 239

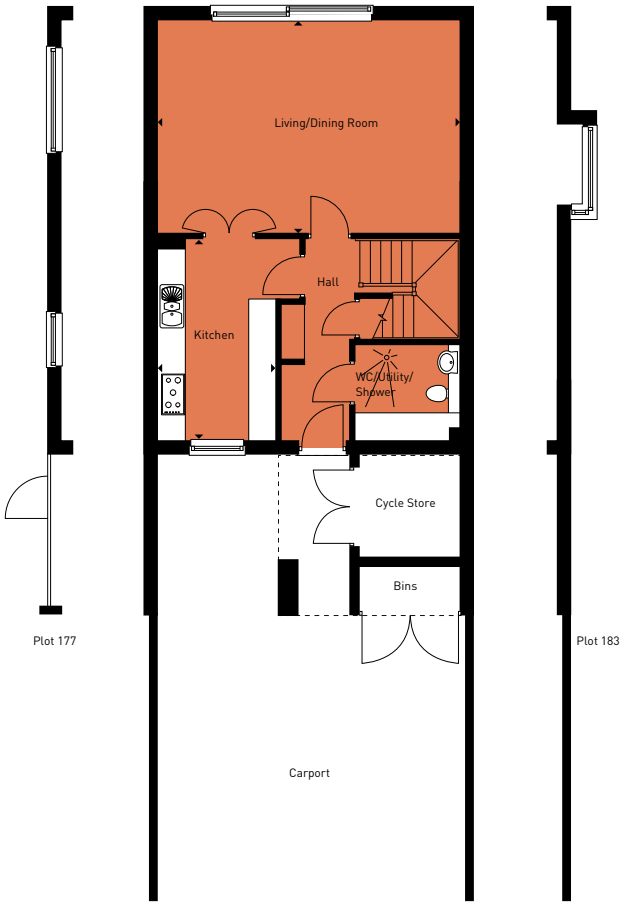
GROUND FLOOR			
Living Room	3424mm x 3400mm	11'2" x 11'1"	
Dining Room	5655mm x 2985mm	18'6" x 9'9"	
Kitchen	3045mm x 2850mm	9'11" x 9'4"	

FIRST FLOOR			
Bedroom 1	4395mm x 3411mm	14'4" x 11'2"	
Bedroom 2	3490mm x 3411mm	11'5" x 11'2"	
Bedroom 3	3185mm x 2725mm	10'5" x 8'11"	
Total Area	105.28 sqm	1133 sqft	

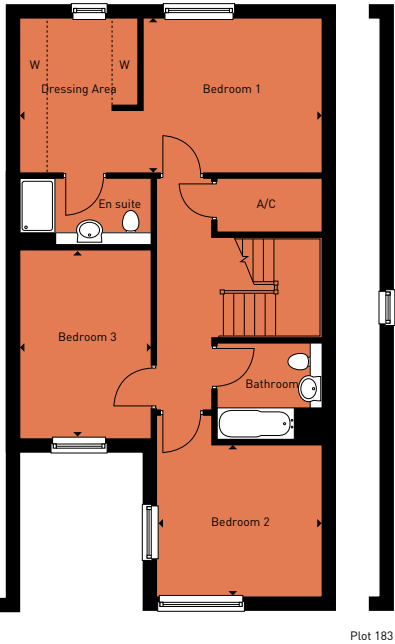
W - Wardrobe C - Cupboard



THE BENJAMIN
Three bedroom house



Ground Floor



First Floor

House numbers 177 – 183

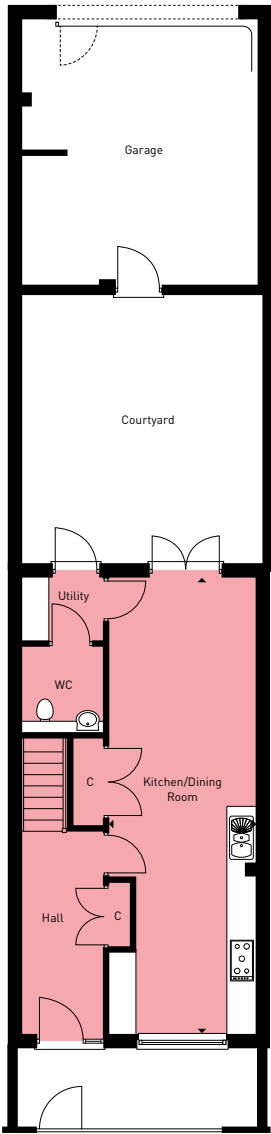
GROUND FLOOR			
Living/Dining Room	6650mm x 4675mm	21'10" x 15'4"	
Kitchen	4423mm x 2600mm	14'6" x 8'6"	

FIRST FLOOR			
Bedroom 1	6650mm x 3400mm	21'10" x 11'2"	
Bedroom 2	3623mm x 3344mm	11'11" x 11'0"	
Bedroom 3	4148mm x 2908mm	13'7" x 9'7"	
Total Area	133 sqm	1432 sqft	

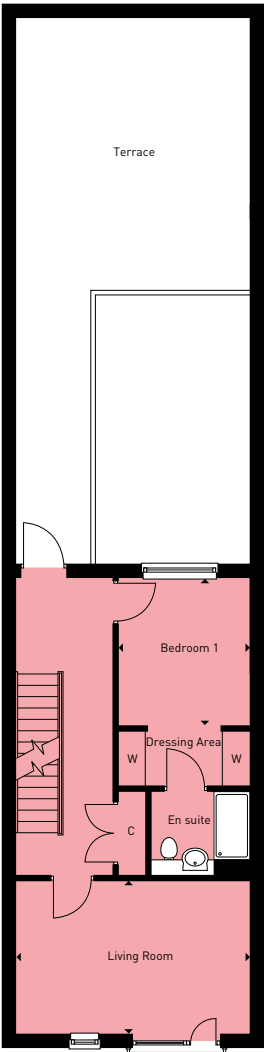
W - Wardrobe C - Cupboard



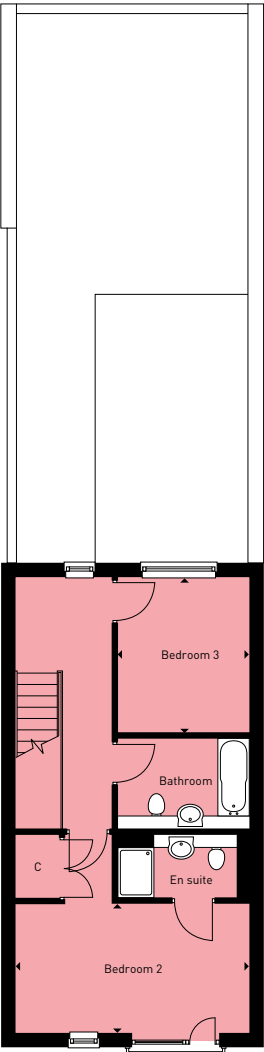
THE CROFT
Three bedroom house



Ground Floor



First Floor



Second Floor

House numbers 204, 206 & 208

GROUND FLOOR

Kitchen/Dining Room	10036mm x 3240mm	32'11" x 10'8"
FIRST FLOOR		
Living Room	5150mm x 3375mm	16'11" x 11'1"
Bedroom 1	3254mm x 2899mm	10'8" x 9'6"

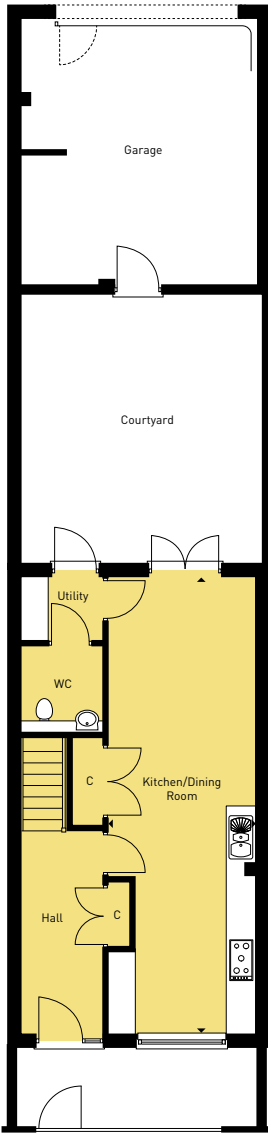
SECOND FLOOR

Bedroom 2	5150mm x 2850mm	16'11" x 9'4"
Bedroom 3	3430mm x 2899mm	11'3" x 9'6"
Total Area	153 sqm	1647 sqft

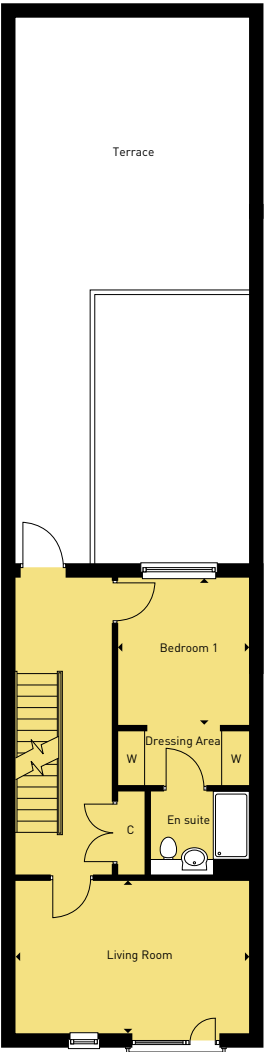
W - Wardrobe C - Cupboard



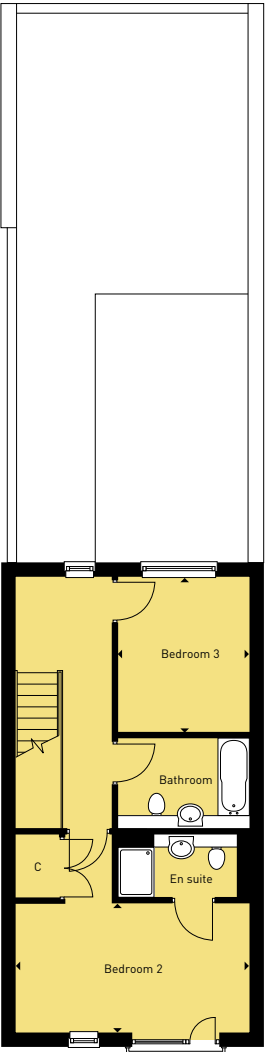
THE CAMERON
Three bedroom house



Ground Floor



First Floor



Second Floor

House numbers 185, 187 & 189

GROUND FLOOR

Kitchen/Dining Room	10036mm x 3240mm	32'11" x 10'8"
FIRST FLOOR		
Living Room	5150mm x 3375mm	16'11" x 11'1"
Bedroom 1	3254mm x 2899mm	10'8" x 9'6"

SECOND FLOOR

Bedroom 2	5150mm x 2850mm	16'11" x 9'4"
Bedroom 3	3430mm x 2899mm	11'3" x 9'6"
Total Area	153 sqm	1647 sqft

W - Wardrobe C - Cupboard



THE SELWYN
Four bedroom house



Ground Floor

First Floor

Second Floor

House numbers 263 – 270

GROUND FLOOR			SECOND FLOOR		
Kitchen/Dining Room	5560mm x 3886mm	18'3" x 12'9"	Bedroom 2	3886mm x 3696mm	12'9" x 12'2"
FIRST FLOOR			Bedroom 4	3886mm x 2814mm	12'9" x 9'3"
Living Room	7335mm x 3933mm	24'1" x 12'11"	Total Area 161.47 sqm 1738 sqft		
Bedroom 1	3886mm x 3696mm	12'9" x 12'2"	W - Wardrobe C - Cupboard		
Bedroom 3	3547mm x 2814mm	11'8" x 9'3"			



THE TURNER
Four bedroom house



Ground Floor

First Floor

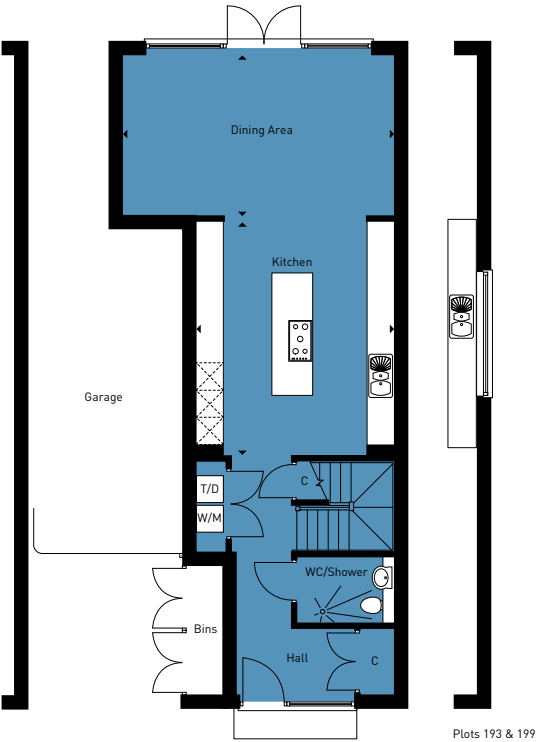
Second Floor

House numbers 251 – 262

GROUND FLOOR			SECOND FLOOR		
Kitchen/Dining Room	5500mm x 3910mm	18'1" x 12'10"	Bedroom 1	3744mm x 3097mm	12'4" x 10'2"
FIRST FLOOR			Bedroom 2	3102mm x 3000mm	10'2" x 9'10"
Living Room	7735mm x 3450mm	25'5" x 11'4"	Bedroom 3	3744mm x 2307mm	12'4" x 7'7"
Bedroom 2	3996mm x 3000mm	13'1" x 9'10"	Total Area 161.52 sqm 1739 sqft		
			W - Wardrobe C - Cupboard		



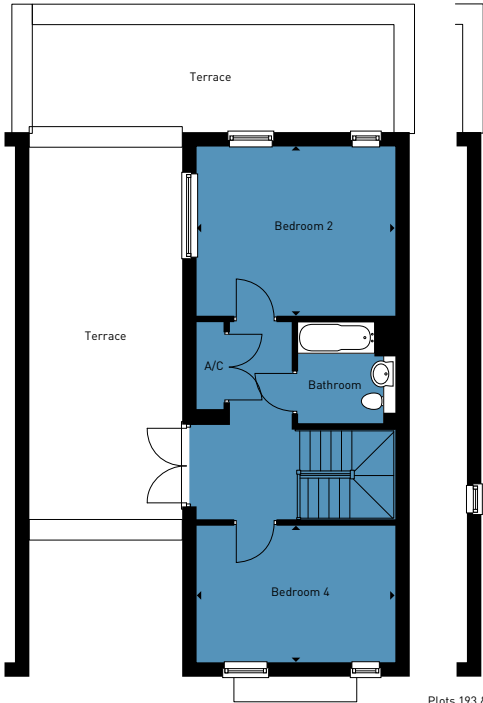
THE HIRSCH
Four bedroom house



Ground Floor

Plots 193 & 199

Second Floor



Plots 193 & 199

First Floor



Plots 193 & 199

House numbers 191 – 199

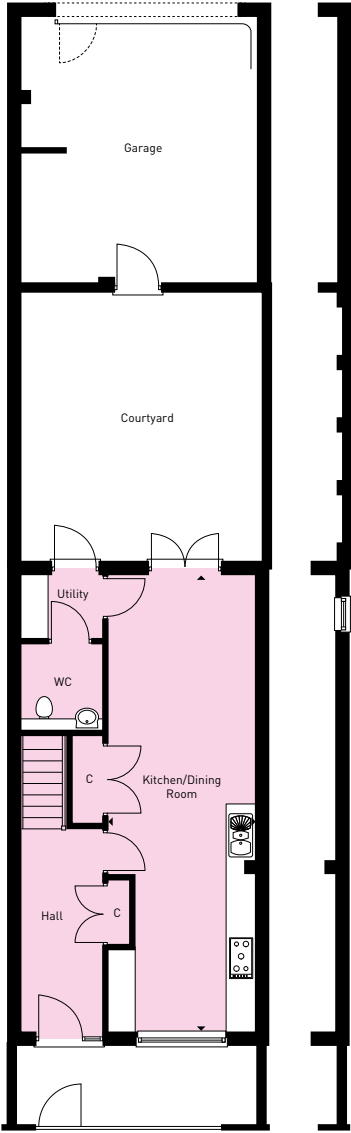
GROUND FLOOR			
Dining Area	5985mm x 3510mm	19'8" x 11'6"	
Kitchen	5197mm x 4370mm	17'1" x 14'4"	
FIRST FLOOR			
Living Room	8235mm x 3253mm	27'0" x 10'8"	
Bedroom 1	4370mm x 4057mm	14'4" x 13'4"	
Bedroom 3	4370mm x 3031mm	14'4" x 9'11"	

SECOND FLOOR			
Bedroom 2	4370mm x 3757mm	14'4" x 12'4"	
Bedroom 4	4370mm x 3031mm	14'4" x 9'11"	
Total Area	182 sqm	1959 sqft	

W - Wardrobe C - Cupboard

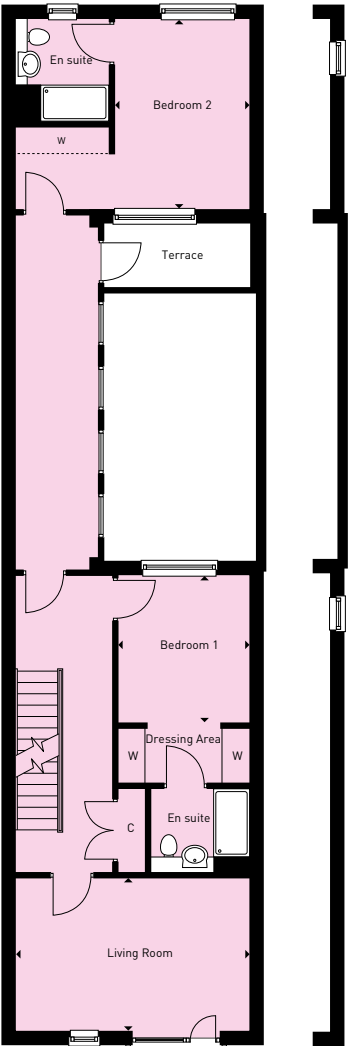


THE GALLAGHER
Four bedroom house



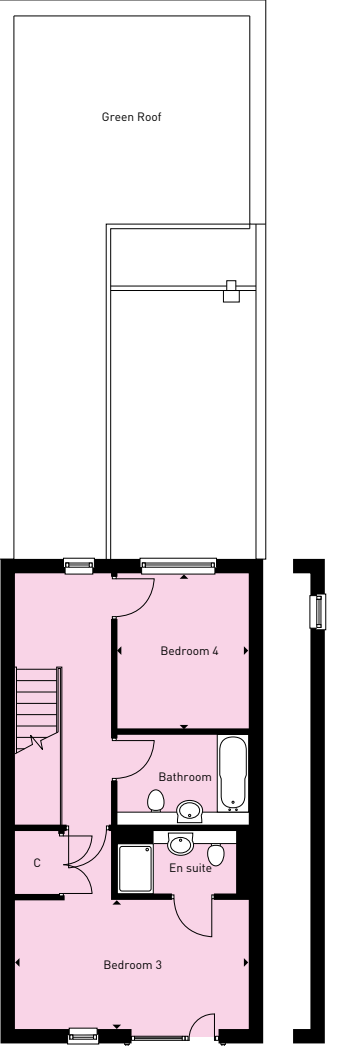
Ground Floor

Plot 209



First Floor

Plot 209



Second Floor

Plot 209

House numbers 203, 205, 207 & 209

GROUND FLOOR			
Kitchen/Dining Room	10036mm x 3240mm	32'11" x 10'8"	
FIRST FLOOR			
Living Room	5150mm x 3375mm	16'11" x 11'1"	
Bedroom 1	3254mm x 2899mm	10'8" x 9'6"	
Bedroom 2	4186mm x 2971mm	13'9" x 9'9"	

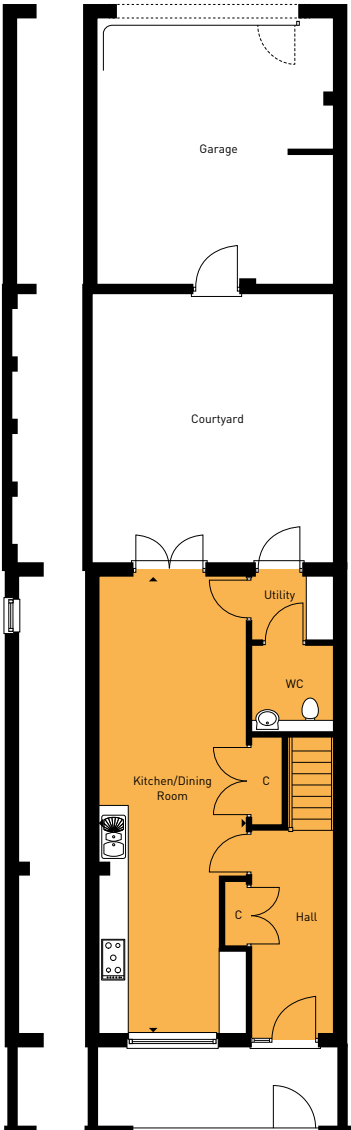
SECOND FLOOR			
Bedroom 3	5150mm x 2850mm	16'11" x 9'4"	
Bedroom 4	3430mm x 2899mm	11'3" x 9'6"	
Total Area	184.29 sqm	1984 sqft	

W - Wardrobe C - Cupboard

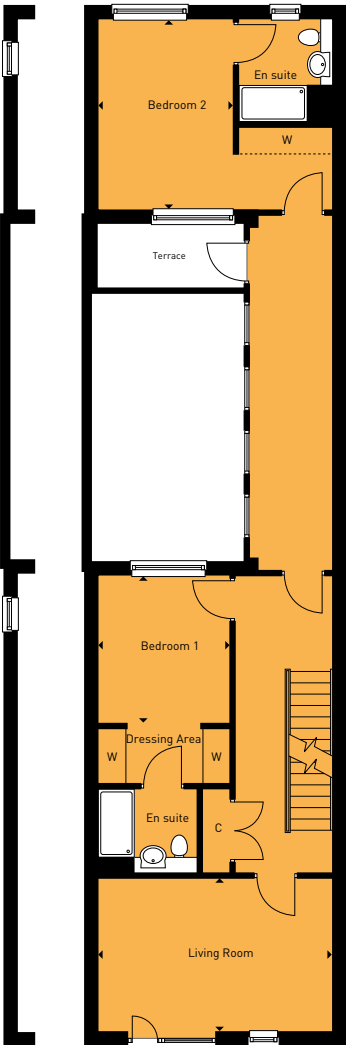


THE DAVIES

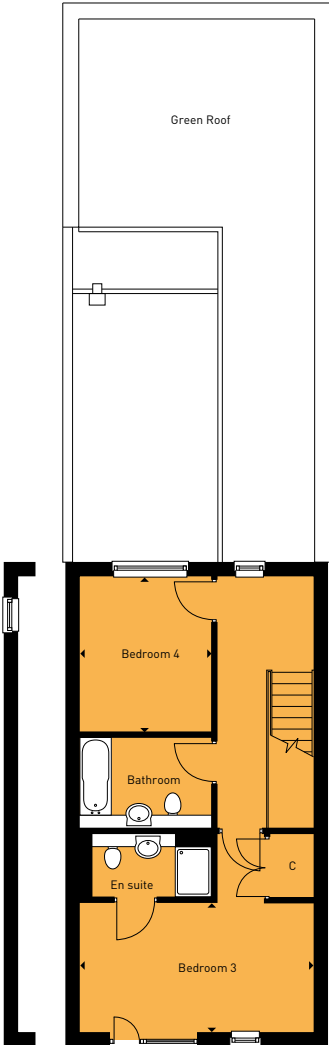
Four bedroom house



Ground Floor



First Floor



Second Floor

House numbers 184, 186, 188 & 190

GROUND FLOOR

Kitchen/Dining Room	10036mm x 3240mm	32'11" x 10'8"
---------------------	------------------	----------------

FIRST FLOOR

Living Room	5150mm x 3375mm	16'11" x 11'1"
Bedroom 1	3254mm x 2899mm	10'8" x 9'6"
Bedroom 2	4186mm x 2971mm	13'9" x 9'9"

SECOND FLOOR

Bedroom 3	5150mm x 2850mm	16'11" x 9'4"
Bedroom 4	3430mm x 2899mm	11'3" x 9'6"
Total Area	184.29 sqm	1984 sqft

W - Wardrobe C - Cupboard



HALO

26 Clay Farm Drive
Trumpington
Cambridge
CB2 9BY
01223 656701

halo@crestnicholson.com
www.crestnicholson.com/halo

Please note, the digital illustrations may not accurately depict elevation materials, gradients, landscaping or street furniture. All stated dimensions are subject to tolerances of +/- 50mm. You are strongly advised, therefore, not to order any carpets, appliances or any other goods which depend on accurate dimensions before carrying out a check measure within your reserved plot. Kitchen layouts are again indicative only and are subject to change before completion. Whilst every reasonable effort has been made to ensure that the information contained in this brochure is correct, it is designed specifically as a guide only and Crest Nicholson reserves the right to amend the specification as necessary and without notice at its absolute discretion. This does not constitute or form any part of a contract of sale transfer or lease unless any point that you specifically want to rely on is confirmed in writing by Crest Nicholson and referred to in the contract. Please ask Sales Advisor for further details.

MARCH 2017