

ST JAMES'S PLACE
ST JAMES'S



An elegant Grade II Listed Freehold townhouse with many period features including the original panelling, sash windows and shutters which have all been recently refurbished.

This five bedroom family house is offered in excellent condition throughout with a large L-shaped reception room and three large windows facing St James's Place. There is also a large kitchen family room in the basement.

The fireplaces have been reinstated in the principal rooms along with original style doors and cornices. The property has air conditioning and a Rako lighting system, underfloor heating in the bathrooms as well as a central entertainment system.

This house is located in a quiet cul de sac in the heart of St James's close to St James's Palace and Spencer House. The open spaces of Green Park and St James's Park are close by.

St James's Place is situated off St James's Street with many famous hotels, restaurant, shops and private members clubs located within the area.

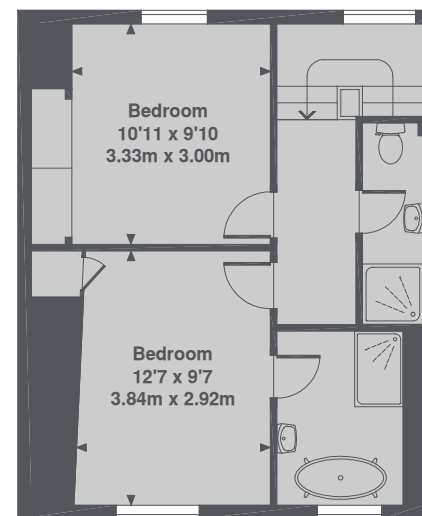


- Grade II Listed
- Period Features
- Five Bedrooms
- Terrace
- Five Bathrooms
- Freehold

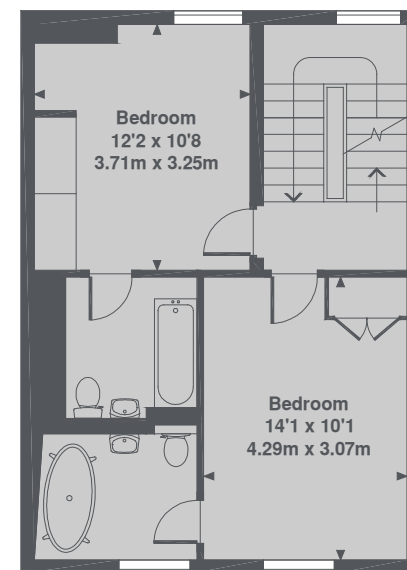




St. James's Place, St. James's, London, SW1A



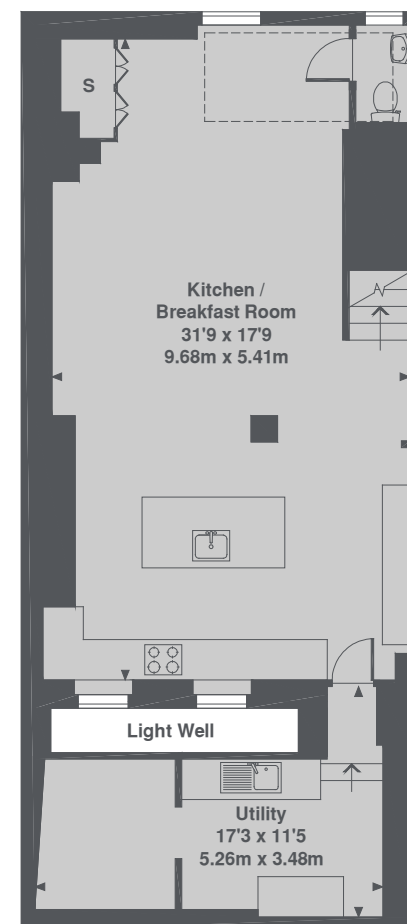
4th Floor



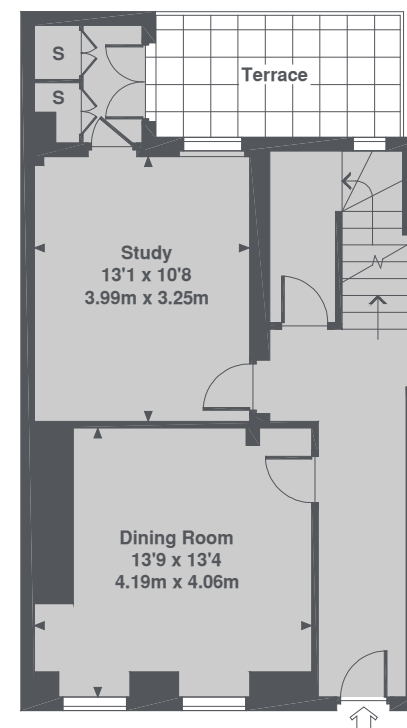
3rd Floor



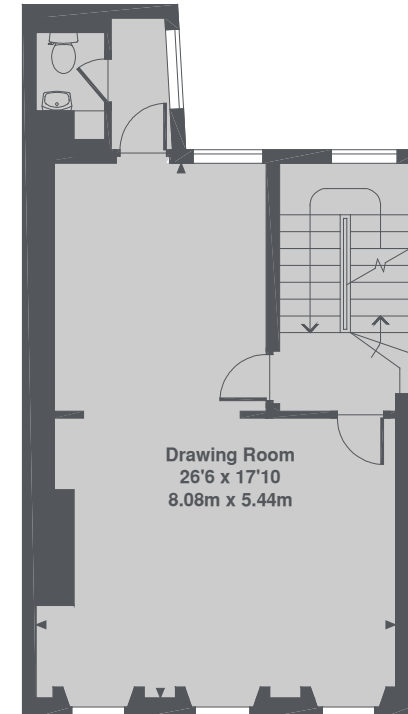
2nd Floor



Lower Ground Floor



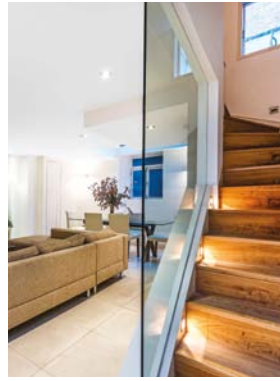
Ground Floor



1st Floor

Dexters Mayfair
66 Grosvenor Street,
London, W1K 3JL
Sales
020 7590 9590

Energy Rating: C. We aim to make our particulars both accurate and reliable. However they are not guaranteed; nor do they form part of an offer or contract. If you require clarification on any points then please contact us, especially if you're traveling some distance to view. Please note that appliances and heating systems have not been tested and therefore no warranties can be given as to their good working order.



Freehold
Price on application

Dexters

Mayfair
020 7590 9590

[dexters.co.uk](https://www.dexters.co.uk)