

MUDEFORD, DORSET

£795,000





MUDEFORD, DORSET

A simply stunning three storey townhouse enjoying Harbour glimpses from the first and second floor situated right by the entrance to Mudeford Quay, forming part of this bespoke development completely approximately one year ago by award winning developers Antler Homes. The accommodation extends to approximately 2,000 sq.ft. with all principle rooms enjoying a sunny, south westerly aspect, with a large first floor, part covered, sun terrace and an integral double garage. A perfectly positioned townhouse to enjoy this wonderful bustling area with great watersports, facilities, beaches, pubs and restaurants. Strongly recommended.

Sitting/Dining Room • Kitchen/Breakfast Room • Four Double Bedrooms • Three Bath/Shower Rooms •
Walk-in Wardrobe • Laundry Room • Storage Cupboards • Integral Double Garage •



The Property

- Luxury three storey town house built approximately one year ago
- Brilliant location right in the heart of Mundeford with glimpses of the Harbour and Hengistbury Head from the first and second floor
- A crisp and contemporary interior with stylish fittings throughout
- Impressive open plan living accommodation with a substantial and sunny balcony (part covered)
- Luxuriously fitted kitchen/breakfast room with high gloss units, quartz worktops and a comprehensive range of integrated quality appliances
- Wonderful master bedroom suite with large walk in dressing room and luxury en-suite
- Three further double bedrooms
- Two further luxury bath/shower rooms
- Gas fired under floor heating and UPVC double glazed windows giving a high energy efficiency rating
- Integral double garage with electrically operated up and over doors
- Separate laundry/utility room
- Stones through from the four star Christchurch Harbour Hotel and Spa with award winning Jetty Restaurants
- Sandy beaches and Mundeford Quay right on your doorstep
- Approximately one and half miles into the centre of Christchurch
- Arguably one the finest town house available in Mundeford at the moment





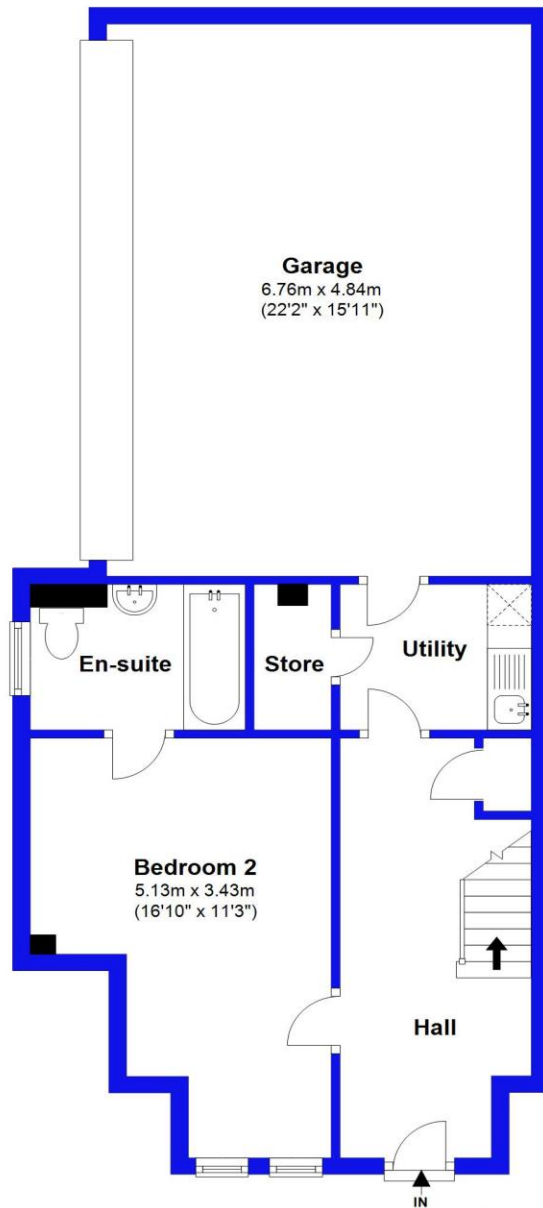
Location

Mudford began as a small fishing village close to the entrance of Christchurch Harbour which still sees fishing boats landing their catch today. The area enjoys award winning sandy beaches at Avon Beach and plenty of wildlife activity on Hengistbury Head and Stanpit Marsh Nature Reserve. The popular Mudford Sandbank attracts visitors every year to the private beach huts with the Harbour providing a sheltered environment for watersports activities. With a friendly, community feel, it is no wonder Mudford is becoming a popular choice for relocation.



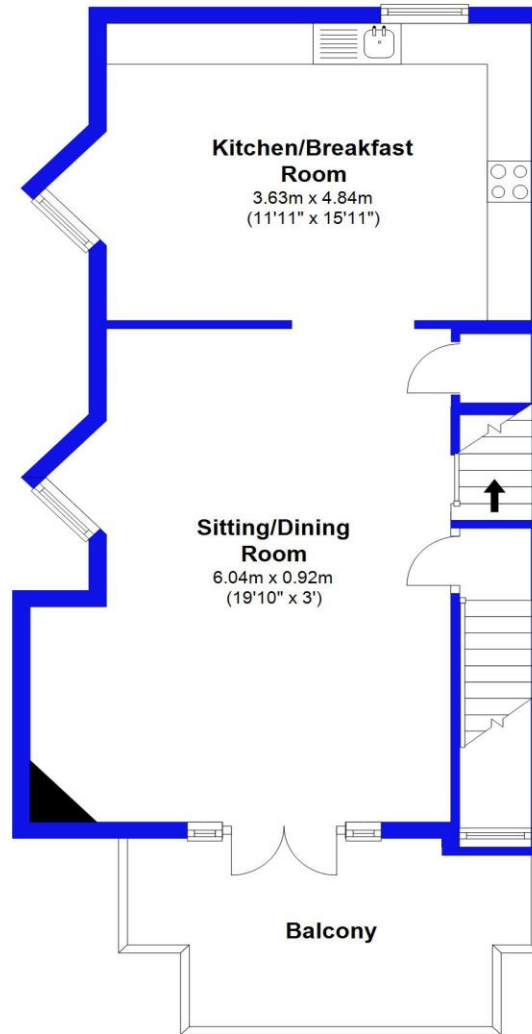
Ground Floor

Approx. 73.2 sq. metres (788 sq. feet)



First Floor

Approx. 54.9 sq. metres (591 sq. feet)



Second Floor

Approx. 59.5 sq. metres (640 sq. feet)

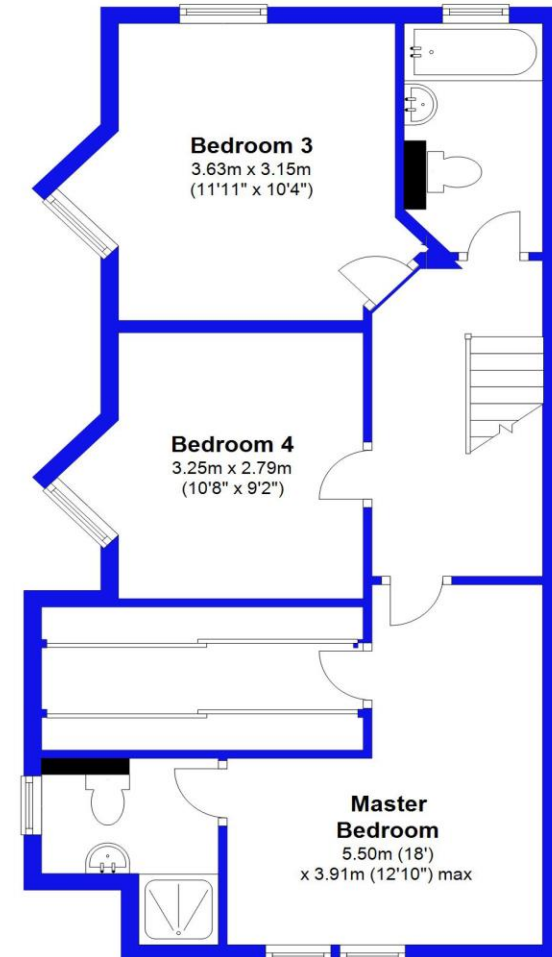


Illustration for identification purposes only; measurements are approximate, not to scale.
Plan produced using PlanUp.





Cambridge House, 112-114 Stanpit, Christchurch, Dorset, BH23 3ND mundeford@mitchells-estateagents.co.uk

01202 499295
mitchells.uk.com