



Pump House Crescent, Brentford, TW8

Pump House Crescent, TW8

£1,185,000 Leasehold

Description

A stunning split level penthouse apartment in the Kew Bridge West development by St. James. The 1,422 sq. ft. accommodation comprises three large double bedrooms with extensive built-in storage units, one en suite shower room and two separate modern bathrooms. The upper floor boasts an amazing master suite with panoramic views via the 360 degree wrap around terrace, en suite shower room and separate dressing area. The state of the art kitchen is open-plan to the double aspect reception room which has sliding patio doors to a private terrace. The apartment is situated on the seventh and eighth floor and offers beautiful views of the landscaped gardens below and the cityscape all over London.

Location

There is a fully equipped gym suite for use of the residents, and the apartment is a stone's throw from Kew Bridge Station. Direct links to Waterloo take 30 minutes.



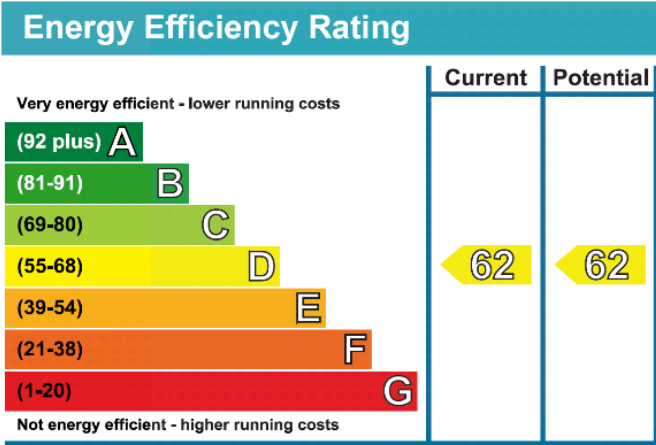
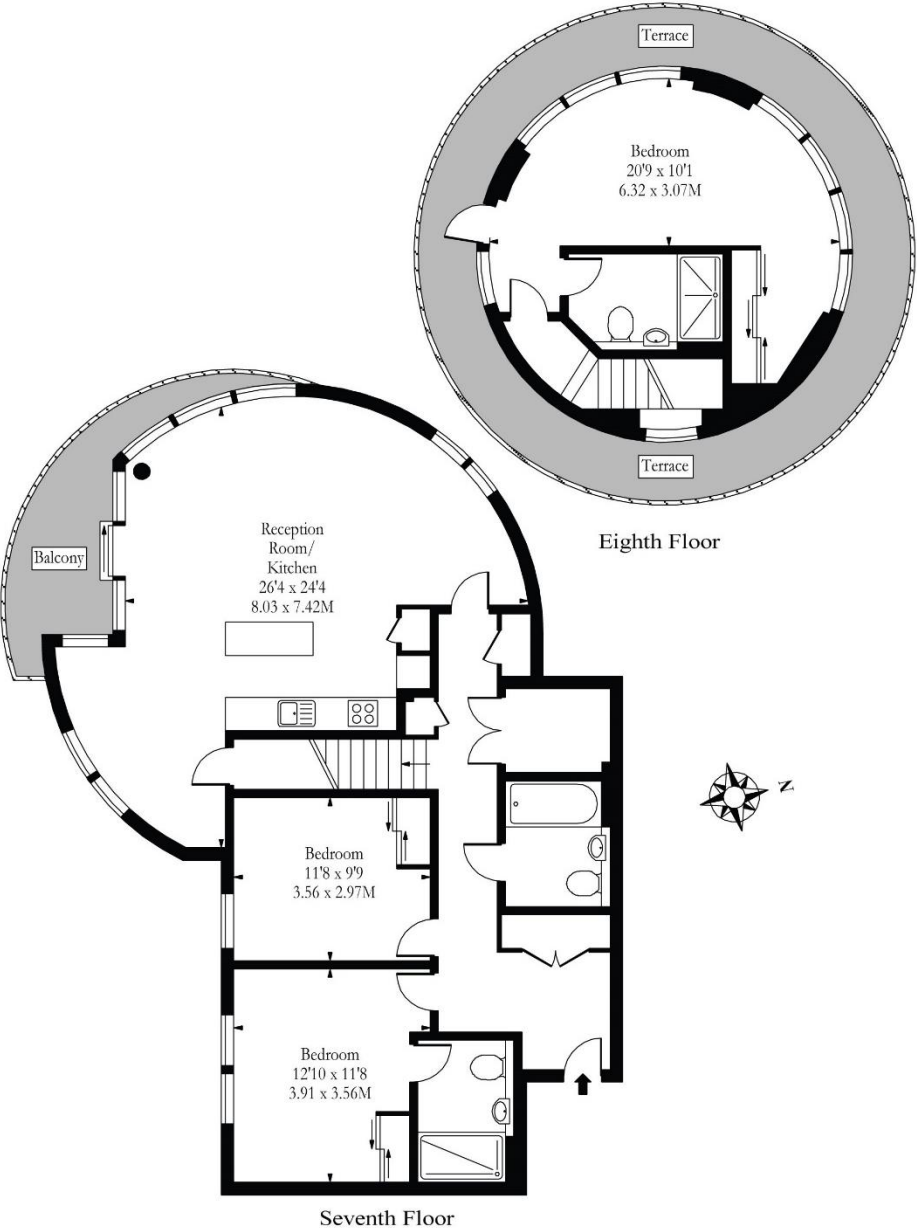
Key information

- **Local Authority:** London Borough of Hounslow
- **Internal Area:** 1,422 sq. ft. / 132 sq. m
- **EPC rating** D
- **Ground Rent:** £300 per annum approx.
- **Service Charge:** £3,000 per annum approx.
- **Lease Length:** 997 years
- **A stunning split level penthouse apartment**
- **Amazing master suite with 360 degree wrap around terrace, en suite shower room and dressing area**
- **Two further double bedrooms (one en suite)**
- **Further private terrace**
- **Situated in the Kew Bridge West development by St. James**



Floorplan & EPC

£1,185,000 Leasehold



Internal Area: 1,422 sq. ft. / 132 sq. m

For clarification; These particulars are believed to be correct but their accuracy is not guaranteed and do not form part of any contract. Any photographs are intended as a guide only and it should not be assumed that any of the fixtures / fittings are included in any sale. Appliances, including central heating, have not been tested. All lease, service charge and ground rent details, if shown, have been provided by the vendor and have not been verified. If you require clarification of any points please contact us. Illustration Purpose Only - Whilst every attempt has been made to ensure the accuracy of the floor plan contained here. Measurements of doors, windows, rooms and other items are approximate and no responsibility is taken for any errors, omissions or mis-statements. The plan is for illustrative purpose only, is not to scale and should be used as such by any prospective purchaser.