



HUNTERS[®]
HERE TO GET *you* THERE

Addington Square, Camberwell, SE5

Addington Square, Camberwell, SE5

Asking Price: £1,900,000

EPC Rating: C/D

Fantastic investment opportunity in Zone 2 London! Grade II listed five-storey Georgian terraced house on historic garden square. Currently separated into four one bedroom flats and one studio flat. Comes with freehold. Large rear garden backing onto Burgess Park. The property is currently tenanted and generating a yield of 4.0%. This characterful house is in one of the most sought after locations in SE5 - the square is frequently a host to film crews. The flats combined are a total of 261.58 Sq. metres. Each has its own kitchen and bathroom and all the flats were refurbished less than five years ago – having been well maintained since.

Addington Square is in the heart of a regeneration scheme which has encouraged dramatic uplift in both Camberwell and Walworth. One end of the square leads directly onto the Burgess Park tennis courts. The Park is Southwark's largest green-space and includes a lake, barbeque facilities, BMX track and community gardens. Camberwell is fast becoming a top-notch food destination with several Jay Rayner favourites. Walworth Road and Elephant and Castle are under-going a dramatic transformation attracting high-flying professionals. Elephant and Castle Underground Station (Northern, Bakerloo) is a couple of bus stops or a 20 minute walk. From here you also have a mainline station (Thameslink) and buses heading all over London.

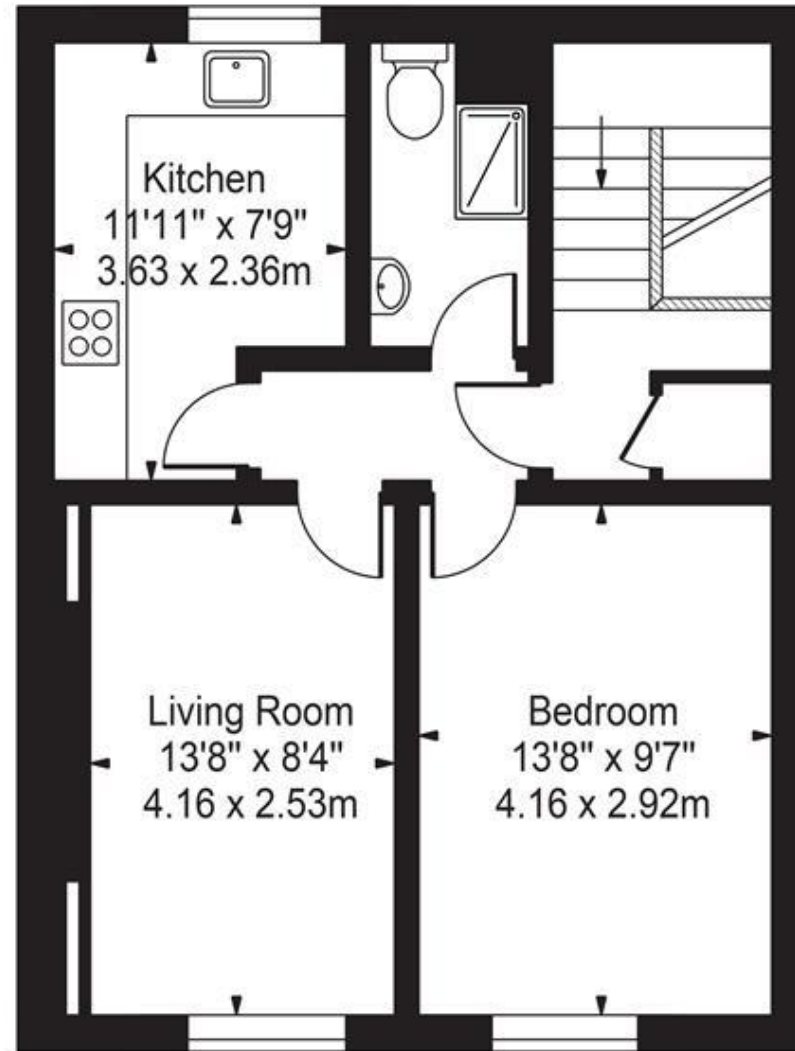
Hunters 29 Denmark Hill, Camberwell, London, SE5 8RS | 020 7708 2002
camberwell@hunters.com | www.hunters.com

VAT Reg. No 898 8594 21 | Registered No: 05849046 England and Wales | Registered Office: 29 Denmark Hill, Camberwell, London SE5 8RS
A Hunters Franchise owned and operated under licence by Adlam & Macdougall Estates Limited



Addington Square, SE5

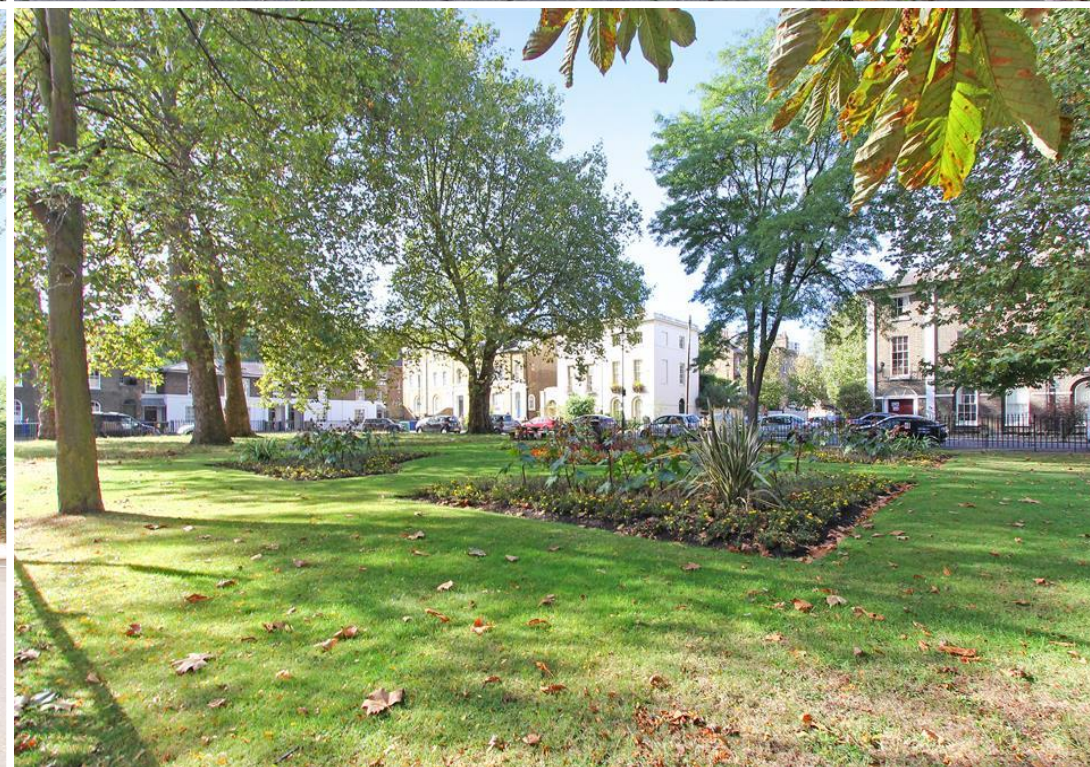
Approx. Gross Internal Area 494 Sq Ft - 45.88 Sq M



Third Floor

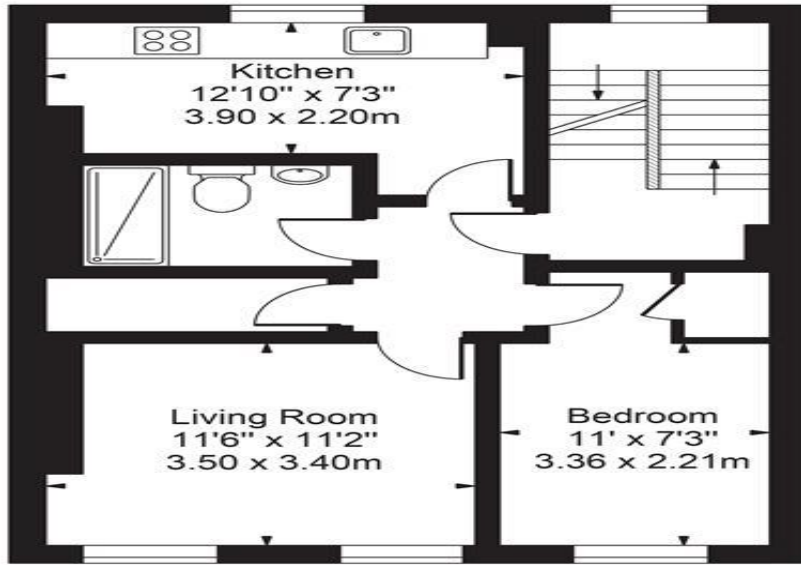
For Illustration Purposes Only - Not To Scale - Floor Plan by interDesign Photography
www.interdesignphotography.com

This floor plan should be used as general outline for guidance only.
All measurements are approximate and for illustration purposes only as defined by the RICS Code of Measuring Practice ©2016.



Addington Square, SE5

Approx. Gross Internal Area 559 Sq Ft - 51.92 Sq M

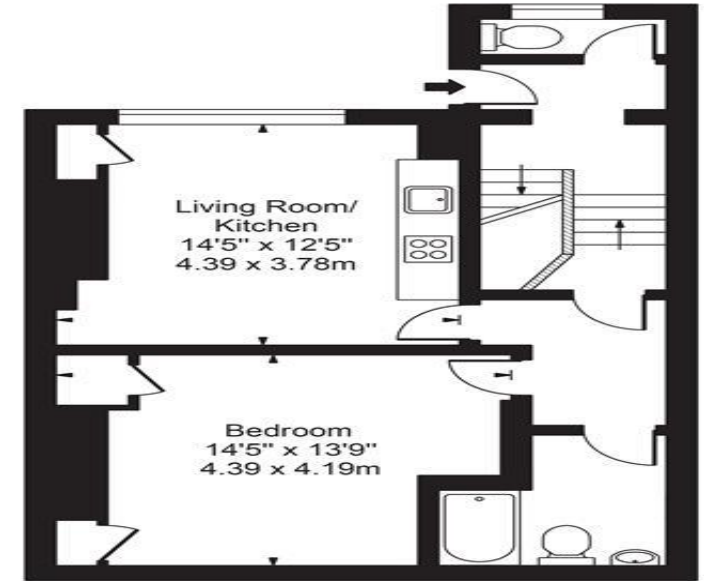


First Floor

For Illustration Purposes Only - Not To Scale - Floor Plan by interDesign Photography
www.interdesignphotography.com
 This floor plan should be used as general outline for guidance only.
 All measurements are approximate and for illustration purposes only as defined by the RICS Code of Measuring Practice ©2016.

Addington Square, SE5

Approx. Gross Internal Area 602 Sq Ft - 55.93 Sq M

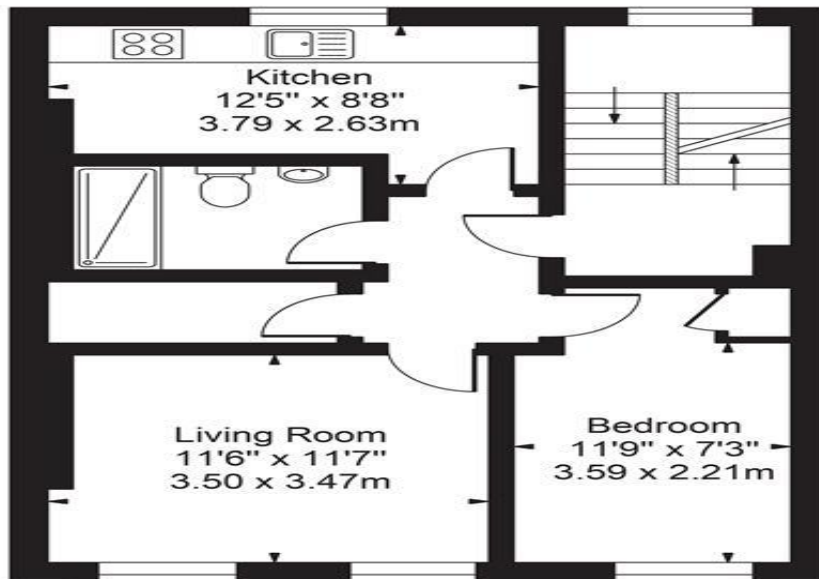


Lower Ground Floor

For Illustration Purposes Only - Not To Scale - Floor Plan by interDesign Photography
www.interdesignphotography.com
 This floor plan should be used as general outline for guidance only.
 All measurements are approximate and for illustration purposes only as defined by the RICS Code of Measuring Practice ©2016.

Addington Square, SE5

Approx. Gross Internal Area 559 Sq Ft - 51.92 Sq M

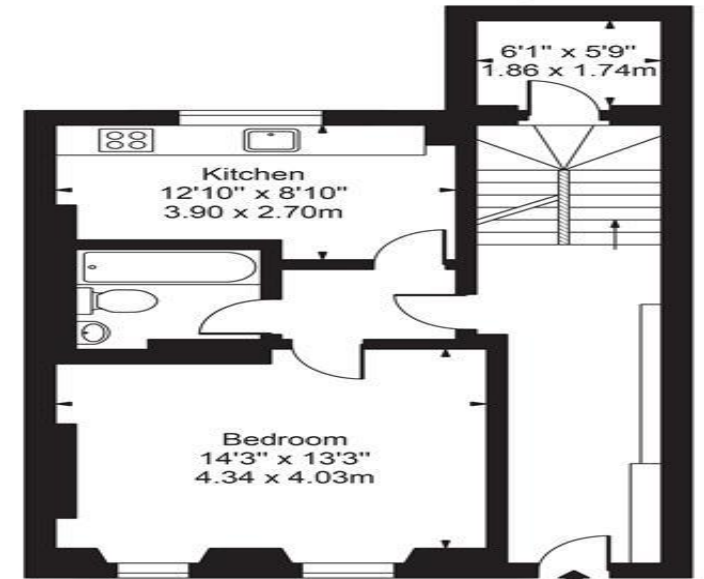


Second Floor

For Illustration Purposes Only - Not To Scale - Floor Plan by interDesign Photography
www.interdesignphotography.com
 This floor plan should be used as general outline for guidance only.
 All measurements are approximate and for illustration purposes only as defined by the RICS Code of Measuring Practice ©2016.

Addington Square, SE5

Approx. Gross Internal Area 602 Sq Ft - 55.93 Sq M



Ground Floor

For Illustration Purposes Only - Not To Scale - Floor Plan by interDesign Photography
www.interdesignphotography.com
 This floor plan should be used as general outline for guidance only.
 All measurements are approximate and for illustration purposes only as defined by the RICS Code of Measuring Practice ©2016.



HUNTERS[®]
HERE TO GET *you* THERE