

WESTFIELD
WATERSIDE
LONDON SW18

NATURAL CITY LIVING

WESTFIELD WATERSIDE

LONDON SW18

*Enjoy a breath of fresh air in the city
at Westfield Waterside.*

Linden Homes' new collection of apartments and townhouses has an advantageous location between the picturesque River Wandle and King George's Park in newly fashionable Earlsfield, perfect for Londoners who want a little tranquility in their busy lifestyles.

WATERSIDE & parkside

Westfield Waterside has a surprisingly green and peaceful position, something highly unusual for a location that's so close to central London.

To the north and the west is King George's Park, giving an uninterrupted outlook across open green lawns. On the eastern edge is the River Wandle, a quiet, lesser known London waterway and an important wildlife corridor, which can be followed for 12 miles along the Wandle Trail.



Computer generated image of Westfield Waterside is indicative only.

WEMBLEY STADIUM

THE KING'S ROAD CHELSEA

KNIGHTSBRIDGE

HYDE PARK

ST JAMES'S PARK

THE RIVER WANDLE

KING GEORGE'S PARK

THE LONDON EYE AND LONDON WATERLOO

THE WALKIE TALKIE

PUTNEY BRIDGE

WANDSWORTH

BATTERSEA BRIDGE

CLAPHAM JUNCTION

THE RIVER THAMES

THE BT TOWER

WESTFIELD WATERSIDE

LONDON SW18

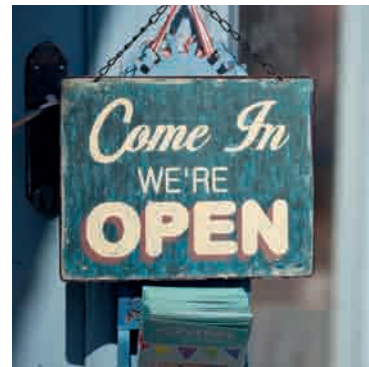
THE GHERKIN

THE CHEESE GRATER

Computer enhanced image of Westfield Waterside is indicative only.



No description of Earlsfield would be complete without mentioning King George's Park, the green corridor that extends from Westfield Waterside to the centre of Wandsworth.



WONDERFULLY local in Earlsfield

Earlsfield is a sought after residential neighbourhood approximately five miles from the centre of London.

The neighbourhood has a character all of its own. Garratt Lane is the 'village street' running north and south from the station, and is where you can find some convenient shops for purchases on your way home. It's also the location for an exciting range of restaurants and bars.

In Earlsfield, you can find a whole world of dining in one small area. There's Italian at Carluccio's, Thai at Amaranth, Korean

at Cah-Chi, South African steak at Roxie, Indian at Nazmin's, Brazilian at Nabrasa, and a wide choice of contemporary tastes at The Sylvan Oak. The Wandle is a traditional pub that has had a makeover and now attracts glowing reviews. Even the old station ticket office has become somewhere to eat: it's now The Earlsfield gastropub.

For local fitness, Nuffield Health has a branch on the edge of King George's Park, offering a wide range of classes, a gym and pool.



WANDSWORTH

rejuvenated

The Westfield Waterside scheme opens up the riverside walkway and establishes new connections between Earlsfield and the park.

It's a story of 'change for the better' in Wandsworth, and Westfield Waterside is playing its part in the borough's regeneration.

The development replaces an old industrial complex with much needed new homes, a café, riverside walk and new links to King George's Park and the River Wandle.

The Wandle itself, once a polluted backwater, is making a full recovery as an attractive green route and nature resource. Walkers and cyclists can follow the Wandle Trail all the way to Croydon.

Meanwhile, around £1 billion is being poured into Wandsworth town centre, creating a new quarter around the historic Ram Brewery and bringing long-awaited road improvements. Southside Shopping Centre is also expanding, with £50 million worth of additional shops and five new restaurants.

WHILE

away the hours



You don't have to travel far from Westfield Waterside to find a green oasis: it's King George's Park, and it is literally on the doorstep.

This charming 55 acre park dates from 1921 and, as well as open space, it has a trim trail, tennis courts and sports pitches. You can follow its pathways all the way to the Southside Centre or explore the Wandle Trail along the eastern edge of the park.

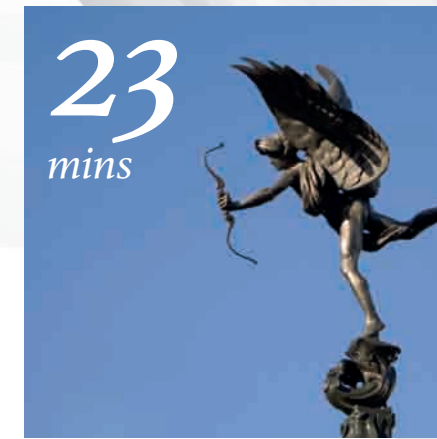
Wandsworth Common is another green treasure in the borough. It's larger than King George's Park and somewhat wilder, with parts of it given over to ecology areas. Nevertheless, there's still plenty of space for recreation; tennis, fishing in the lake, cycling and jogging.



Escape from city life and explore the surprising amount of green space and waterside close to home.

WATERLOO

in 13 minutes



The outstanding rail connections are a major reason why Earlsfield is such a sought after area.

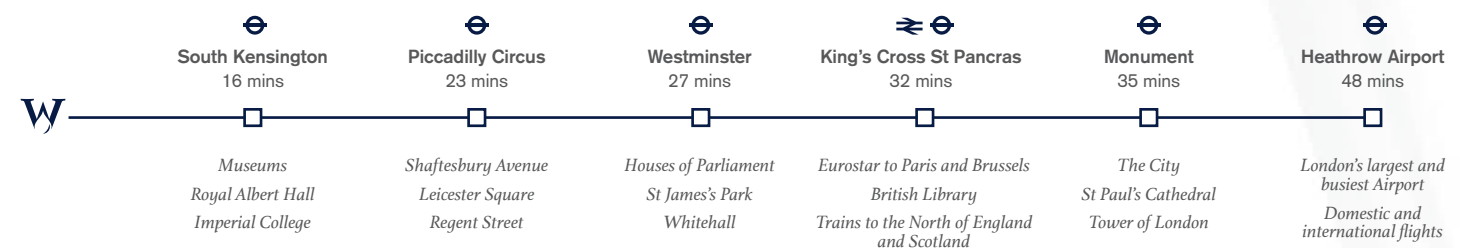
Earlsfield station is a mere 6 minutes' walk from Westfield Waterside. From here, trains take as little as 13 minutes to reach London Waterloo. Clapham Junction is on this route, giving options to London Victoria and the London Overground, as is Vauxhall, an interchange with London Underground Victoria Line. Take the train from Earlsfield to Wimbledon and you can also access the London Underground District Line.

For many Londoners, cycling is the best way to get around, and there is ample cycle storage at Westfield Waterside. The development is conveniently close to the CS8 Cycle Superhighway, which can be accessed on Old York Road and provides a safer route all the way to Westminster.

TRAINS FROM EARLSFIELD



TRAINS FROM SOUTHFIELDS



All timings are approximate. Source: tfl.gov.uk

WORLD leading universities

University league tables consistently show London to be in the top echelon. Imperial College, University College London (UCL) and King's College London are currently in the top ten, according to the QS World University Rankings*.

The capital has 46 universities in total, between them offering 30,000 courses and attracting students from all parts of the UK and from all over the world. The rail and tube connections close to Westfield Waterside mean that most are within easy reach.

*QS World University Rankings, 2014/15. www.study london.ac.uk



University College London

London's leading multidisciplinary university, with 8,000 staff and 22,000 students and a particular reputation for scientific research.

www.ucl.ac.uk

Nearest tube: Euston Square
38 minutes

Imperial College
London

Imperial College London

Imperial College provides world class scholarship, education and research in science, engineering, management and medicine.

www.imperial.ac.uk

Nearest tube: South Kensington
18 minutes**



London School of Economics
and Political Science

A specialist in social sciences from economics, politics and law to sociology, anthropology, accounting and finance.

www.lse.ac.uk

Nearest tube: Temple
32 minutes



University of Greenwich

The university's disciplines include teacher training, architecture and engineering, and there is a specialist maritime institute.

www.gre.ac.uk

Nearest station: Greenwich
42 minutes



Middlesex University London

A world-class centre for education, research and skills-based learning, where £200 million has been invested in state-of-the-art facilities.

www.mdx.ac.uk

Nearest tube: Hendon Central
52 minutes



King's College London

King's is one of the world's leading research and teaching universities based across five campuses in the heart of London.

www.kcl.ac.uk

Nearest tube: Temple
32 minutes



School of Oriental
and African Studies

Part of the University of London, SOAS is the world's leading centre for the study of a highly diverse range of subjects concerned with Asia, Africa and the Middle East.

www.soas.ac.uk

Nearest tube: Russell Square
34 minutes



University of Westminster

The University of Westminster is a diverse centre for study located in central London offering undergraduate, postgraduate and research degrees.

www.westminster.ac.uk

Nearest tube: Oxford Circus
28 minutes



City University London

A leading global university committed to academic excellence, focused on business and the professions.

www.city.ac.uk

Nearest tube: Angel
38 minutes

All timings are approximate from Earsfield station (** from Southfields station). Source: tfl.gov.uk



WORK

hard play hard

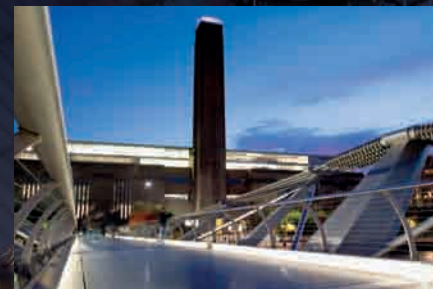
In a recent survey, London was named the world capital for business, finance and culture, ahead of New York, Singapore and Beijing.*

Equally, young professionals love London for its buzz and dynamism; Westfield Waterside is the ideal base for getting the most out of this global city.

The direct train link will bring you to Waterloo and the South Bank, where you'll be in the midst of some of London's best galleries, restaurants and riverside bars.

Just a little further east and you're in Southwark, another vibrant neighbourhood whose star attraction is Tate Modern, connecting you via the Millennium Bridge to the numerous lively districts north of the river.

*PwC's Cities of Opportunity Index, 2014.



The development features high quality architecture and materials as a complementary backdrop to an urban park.



WORKING

with esteemed partners

Westfield Waterside has been designed by Conran and Partners and constructed by Linden Homes' parent company; Galliford Try.

Sir Terence Conran is the celebrated British architect and designer, whose landmark projects include the Bluebird Garage in Chelsea,

the regeneration of the Shad Thames area, the Design Museum and a host of prestigious London restaurants. He was also the founder of Habitat.

The original proposals for Westfield Waterside were prepared by Conran and Partners, and have now been refined by Linden Homes to take modern home design to a new level.

Computer generated image of Westfield Waterside is indicative only.



Computer generated image of Westfield Waterside is indicative only.



Computer generated image of Westfield Waterside is indicative only.



Computer generated image of Westfield Waterside is indicative only.

LINDEN HOMES

Linden Homes is part of the Galliford Try Group, a market leader with a truly impressive brand, offering a distinctive and diverse product range, both in terms of house styles and specifications.

Dedicated to regenerating brownfield land, we are a responsible, award-winning housebuilder with a reputation for quality and creative sustainable developments in prime locations. Signature architecture that enhances a development's location is often employed, as are flexible layouts with contemporary design features that maximise space or light.

Creative land solutions

Each development has its own individual approach and solution, and we are undertaking more and more mixed-use schemes, providing retail, live/work, nursing home and community facilities, as well as the provision for leisure space. We also have a formal environmental policy producing highly-efficient homes reducing running costs for the customer.

Customer experience

Each region has a dedicated customer service team who work with the customer from the initial enquiry right through to legal completion day and beyond. Through our Connections database, we are able to maintain a personal relationship with each customer, advising them of forthcoming events and incentives.

Our Customer Charter

We use our Customer Charter to guide us when it comes to providing you with a first class service in every respect. It includes the procedures and information we follow at each stage of your purchase. Our team is trained to understand their responsibilities to you, the customer, and to know exactly what the charter means to you and us. You can measure our performance through an external research company, please visit www.consumercodeforhomebuilders.com

To download a printed copy of our Customer Charter, or for more information, please visit our website. We will automatically provide you with a printed copy when you reserve a property.

Computer generated image of Westfield Waterside is indicative only.



A development by



Westfield Waterside
Knaresborough Drive | Earlsfield | London | SW18 4UT

Please note that finishes, materials and measurements may alter slightly and are subject to change. Please ask your Sales Advisor for specific details.

0844 488 1536

lindenhomes.co.uk/westfield

