

Pure

a collection of luxury homes

strata



-  : sofia (three bedroom home)
-  : sassari (three bedroom home)
-  : florence (four bedroom home)
-  : zurich (four bedroom home)
-  : ascona (four bedroom home)
-  : siena (four bedroom home)

strata.co.uk

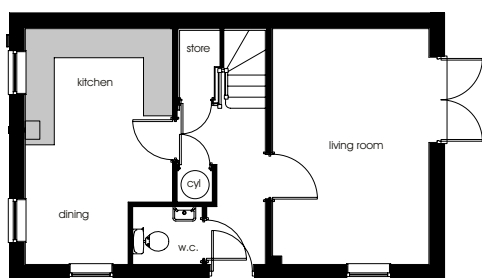
specification

	sofia three bed detached	sassari three bed detached	zurich four bed detached	florence four bed detached	siena four bed detached	ascona four bed detached
NHBC warranty	●	●	●	●	●	●
Gas central heating with Ideal Logic boiler	●	●	●	●	●	●
Landscaped front garden	●	●	●	●	●	●
Tarmac finished driveways	●	●	●	●	●	●
Cream UPVC windows	●	●	●	●	●	●
Front door with multi point lock	●	●	●	●	●	●
Smoke detectors	●	●	●	●	●	●
Two television points & two telephone points	●	●	●	●	●	●
En suite bathroom to bedroom one, as house type working drawings	●	●	●	●	●	●
Contemporary design sanitaryware	●	●	●	●	●	●
Oak veneer internal doors	●	●	●	●	●	●
Choice of kitchen unit doors, handles & worktops	●	●	●	●	●	●
Stainless kitchen sink and mixer tap	●	●	●	●	●	●
Neff single electric oven & extractor & Indesit ceramic hob	●	●	●	●	●	●
Integrated appliances			●	●	●	●
Choice of Porcelanosa wall tiles	●	●	●	●	●	●
Choice of fitted wardrobes to bedroom one			●	●	●	●
White emulsion paint finish to walls & ceilings	●	●	●	●	●	●
White gloss paint finish to woodwork	●	●	●	●	●	●

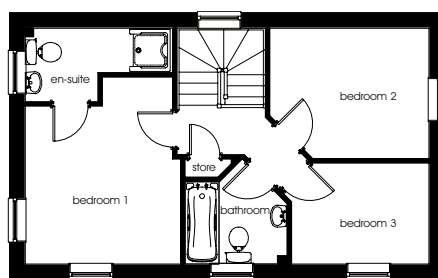
Your sales consultant will provide details of specific plot information

sassari

a three bedroom detached home



ground



first

ground

kitchen/dining (max)
4870mm x 3044mm 16'0" x 10'0"

living room
4870mm x 3203mm 16'0" x 10'6"

w.c.
1438mm x 1195mm 4'9" x 3'11"

first

bedroom 1
3857mm x 3238mm 12'8" x 10'8"

en-suite
2158mm x 1516mm 7'1" x 5'0"

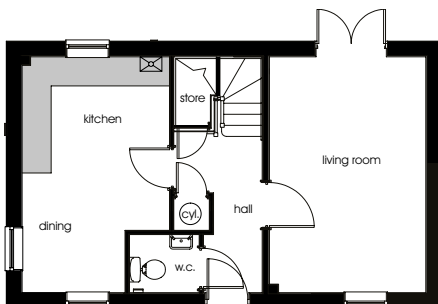
bedroom 2
3263mm x 2692mm 10'9" x 8'10"

bedroom 3
2816mm x 2085mm 9'3" x 6'10"

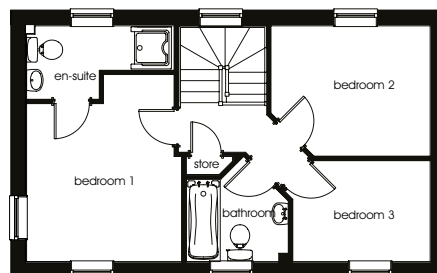
bathroom
2104mm x 1705mm 6'11" x 5'7"

sofia

a three bedroom detached home



ground



first

ground

kitchen/dining (max)
4870mm x 3044mm 16'0" x 10'0"

living room
4870mm x 3203mm 16'0" x 10'6"

w.c.
1438mm x 1195mm 4'9" x 3'11"

first

bedroom 1
3857mm x 3238mm 12'8" x 10'8"

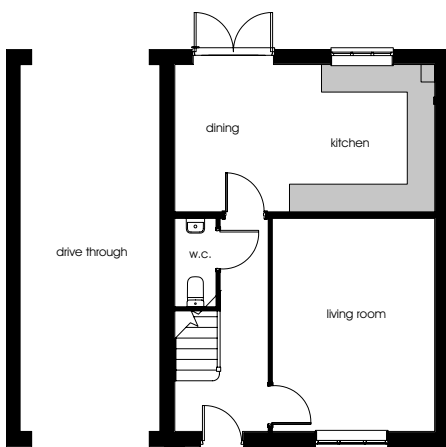
en-suite
2158mm x 1516mm 7'1" x 5'0"

bedroom 2
3263mm x 2692mm 10'9" x 8'10"

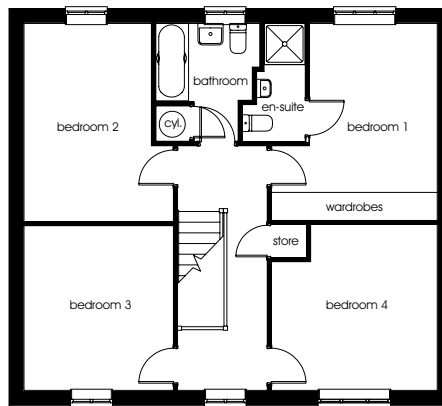
bedroom 3
2816mm x 2085mm 9'3" x 6'10"

bathroom
2104mm x 1705mm 6'11" x 5'7"

ascona a four bedroom detached home



ground



first

ground

kitchen/dining
5670mm x 3215mm 18'7" x 10'7"

living room
4648mm x 3544mm 15'3" x 11'8"

w.c.
1927mm x 900mm 6'4" x 2'11"

first

bedroom 1 (max)
4298mm x 3622mm 14'1" x 11'11"

en-suite (max)
2616mm x 1372mm 8'7" x 4'6"

bedroom 2
4325mm x 2782mm 14'2" x 9'2"

bedroom 3
3622mm x 3622mm 11'11" x 11'11"

bedroom 4
3595mm x 3260mm 11'10" x 10'8"

bathroom (max)
2570mm x 2271mm 8'5" x 7'5"

florence

a four bedroom detached home

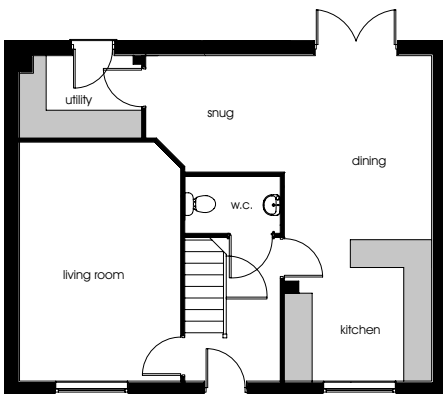


ground

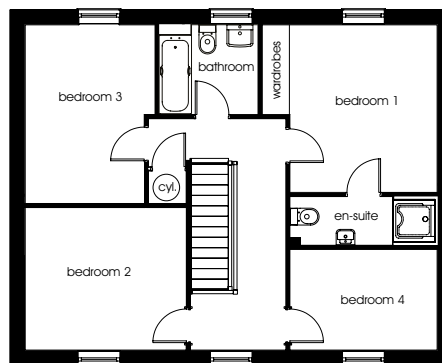
kitchen/dining (max)	7020mm x 3128mm	23'1" x 10'3"
living room (max)	5155mm x 3440mm	16'11" x 11'3"
snug (max)	3037mm x 2474mm	10'0" x 8'1"
utility	2635mm x 1777mm	8'8" x 5'10"
w.c.	2040mm x 1023mm	6'8" x 3'4"

first

bedroom 1 (max)	3814mm x 3617mm	12'6" x 11'11"
en-suite	2012mm x 1062mm	6'7" x 3'5"
bedroom 2 (max)	3477mm x 3076mm	11'5" x 10'1"
bedroom 3 (max)	3857mm x 2803mm	12'8" x 9'2"
bedroom 4	3190mm x 2175mm	10'6" x 7'2"
bathroom	2094mm x 1836mm	6'11" x 6'0"



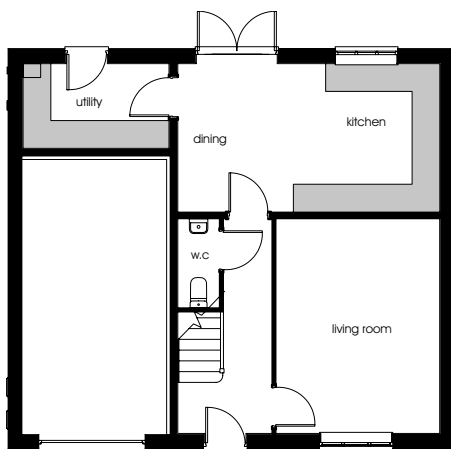
ground



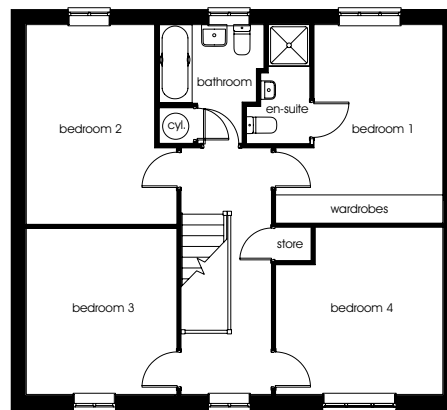
first

sienna

a four bedroom detached home



ground



first

ground

kitchen/dining
5670mm x 3212mm 18'7" x 10'7"

living room
4648mm x 3544mm 15'3" x 11'8"

w.c.
1927mm x 910mm 6'4" x 2'11"

utility
3158mm x 1836mm 10'4" x 6'0"

first

bedroom 1 (max)
4298mm x 3622mm 14'1" x 11'11"

en-suite (max)
2616mm x 1372mm 8'7" x 4'6"

bedroom 2
4325mm x 2782mm 14'2" x 9'2"

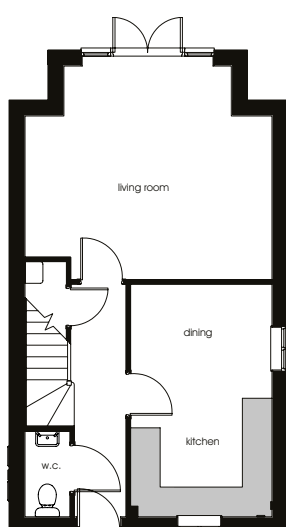
bedroom 3
3622mm x 3622mm 11'11" x 11'11"

bedroom 4
3595mm x 3260mm 11'10" x 10'8"

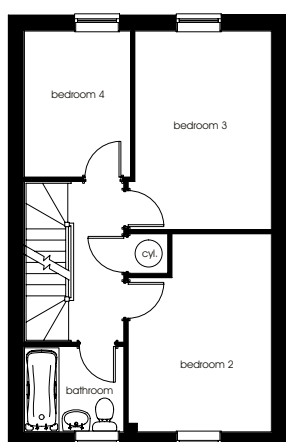
bathroom (max)
2570mm x 2271mm 8'5" x 7'5"

zurich

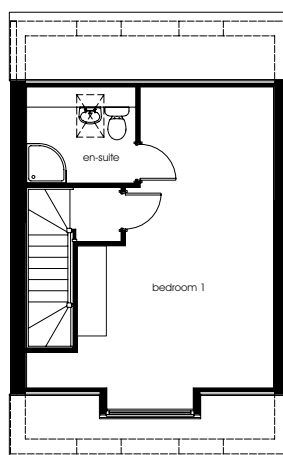
a four bedroom home



ground



first



second

ground

living room (max)

5000mm x 4325mm 16'5" x 14'2"

kitchen/dining

4714mm x 2864mm 15'6" x 9'5"

w.c.

1727mm x 903mm 5'8" x 3'0"

first

bedroom 2

4152mm x 2900mm 13'8" x 9'6"

bedroom 3

3895mm x 2750mm 12'9" x 9'0"

bedroom 4

2860mm x 2163mm 9'5" x 7'1"

bathroom

2012mm x 1728mm 6'7" x 5'8"

second

bedroom 1 (max)

5782mm x 3950mm 19'0" x 13'0"

en-suite

2163mm x 1705mm 7'1" x 5'7"