

## LETCHFORD HOUSE, HEADSTONE LANE HATCH END, HA3 6PE

VDBM

Chartered Surveyors

30A Green Lane  
Northwood  
Middlesex  
HA6 2QB

Tel: 01923 845222

Email: [property@vdbm.co.uk](mailto:property@vdbm.co.uk)

Web: [www.vdbm.co.uk](http://www.vdbm.co.uk)

- Commercial Agency
- Acquisitions
- Property Management
- Property Investment
- Rent Reviews
- Lease Renewals
- Rating Appeals
- Valuations
- Dilapidations
- Building Repairs
- Compulsory Purchase
- Consultancy
- Regulated by RICS
- Registered Valuers



### FOR SALE FREEHOLD – OFFERS INVITED

- Potential for division into separate apartments or suites (STPP)
- Possible reversion to office use (STPP)
- Rear development site (STPP)
- Multiple garaging
- Extensive gardens

Interesting opportunity to acquire a unique period building with some development potential. Built originally in part in the 16<sup>th</sup> Century, the house has been altered, extended and developed over the centuries and is currently occupied as a single residential property.

In the second half of the 20<sup>th</sup> Century, Letchford House was occupied as professional offices by Chartered Accountants and some features of this use remain. In the present owner's time, the interior has been modernised and improved to provide a sumptuous yet versatile home, providing accommodation in different parts of the building. The layout creates the opportunity to accommodate a large family in what are almost "suites" with multiple living areas, bedroom, bathrooms and kitchens. For sale due to retirement of owner.





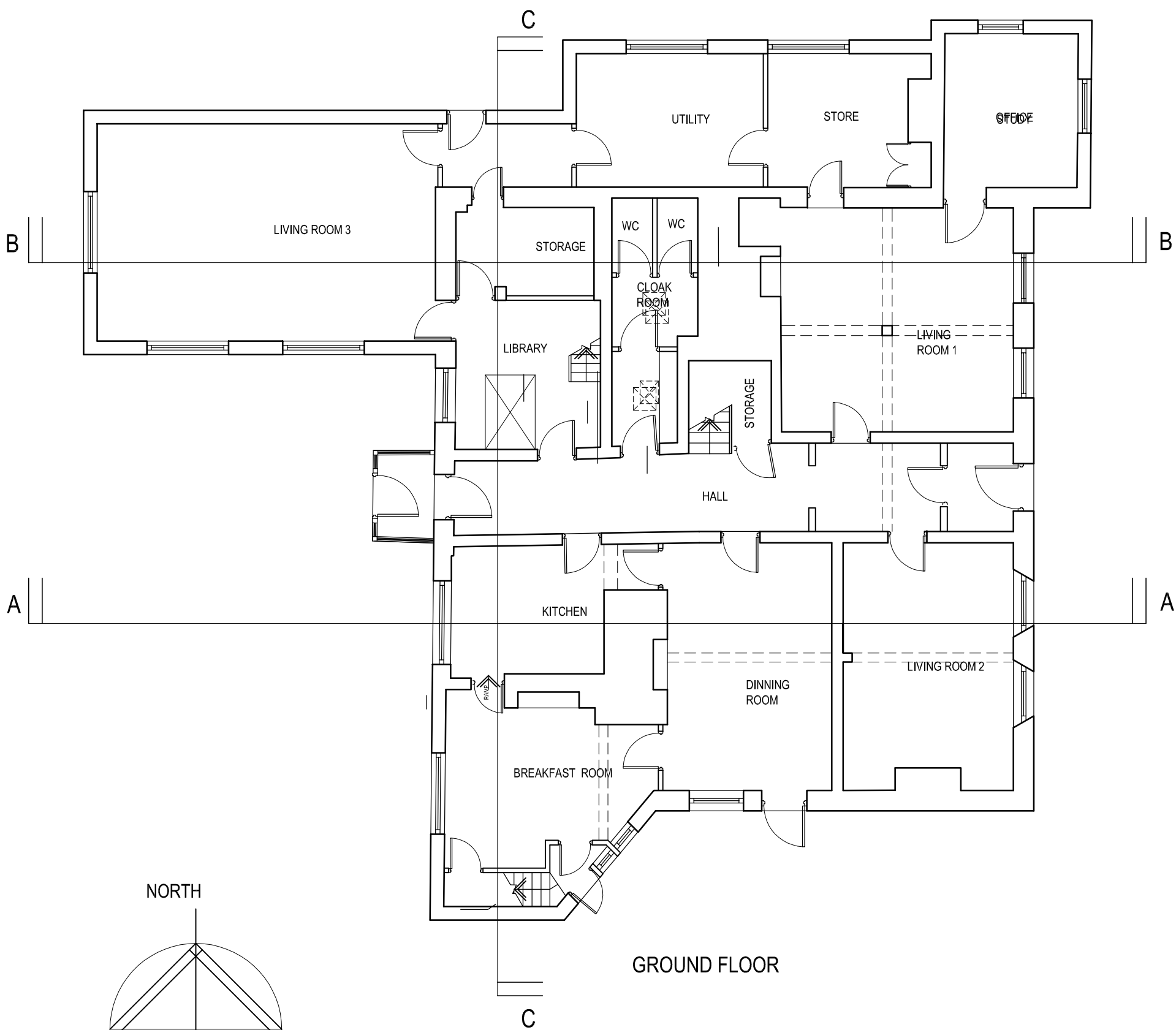


Garage block/site

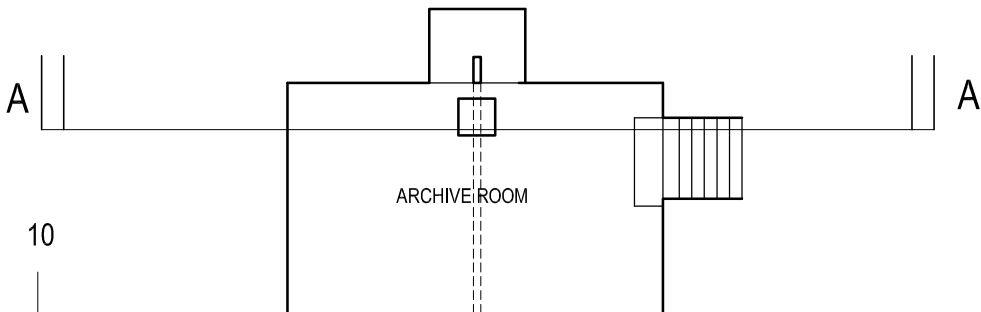


Wide side access to garage block

THIS DRAWING, THE DESIGN AND CONCEPT ARE THE COPYRIGHT OF  
ALAN WARD ARCHITECTS. THIS DRAWING IS ISSUED ON THE TERMS  
THAT IT WILL NOT BE REPRODUCED OR COPIED IN WHOLE OR IN PART  
NOR WILL ANY INFORMATION BE FURNISHED FROM IT WITHOUT THE  
PRIOR WRITTEN AUTHORITY OF ALAN WARD ARCHITECTS.



GROUND FLOOR



BASEMENT FLOOR

SCALE IN METRES

A.12.10 PLAN AMENDED

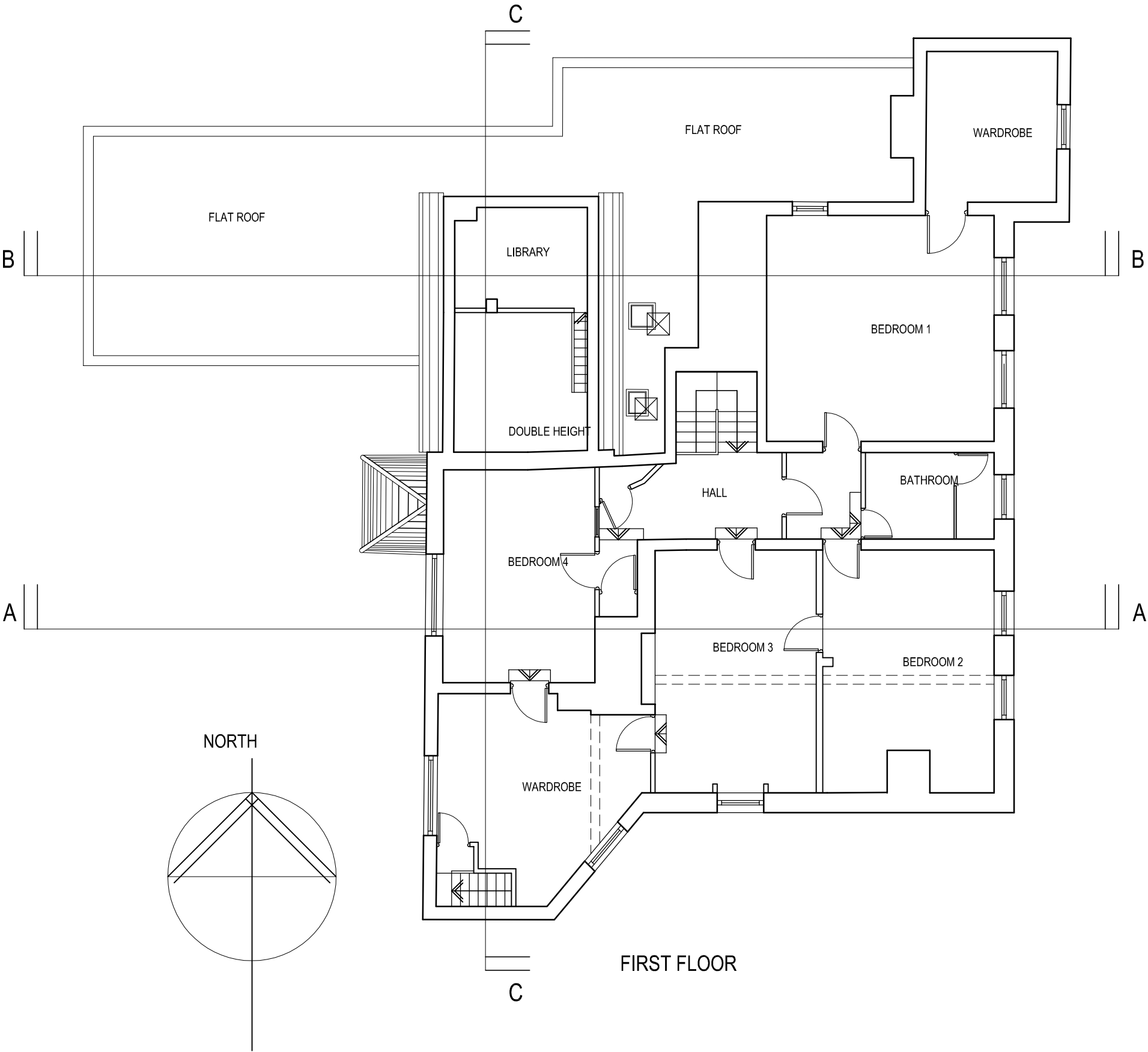
ALAN WARD ARCHITECTS  
LION BOATHOUSE, EEL PIE ISLAND  
LONDON TW1 3DY TEL. 020 8891 1211

LETCHFORD HOUSE,  
HEADSTONE ROAD,  
HARROW, HA3 6PE

GROUND FLOOR PLAN  
PROPOSED

0724 / TP.06	A
1:100@A3   12/10	AJH

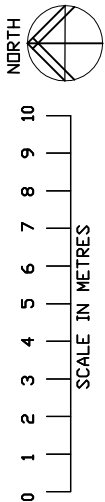
THIS DRAWING, THE DESIGN AND CONCEPT ARE THE COPYRIGHT OF ALAN WARD ARCHITECTS. THIS DRAWING IS ISSUED ON THE TERMS THAT IT WILL NOT BE REPRODUCED OR COPIED IN WHOLE OR IN PART NOR WILL ANY INFORMATION BE FURNISHED FROM IT WITHOUT THE PRIOR WRITTEN AUTHORITY OF ALAN WARD ARCHITECTS.



A.12.10 PLAN AMENDED

THIS DRAWING, THE DESIGN AND CONCEPT ARE THE COPYRIGHT OF ALAN WARD ARCHITECTS. THIS DRAWING IS ISSUED ON THE TERMS THAT IT WILL NOT BE REPRODUCED OR COPIED IN WHOLE OR IN PART NOR WILL ANY INFORMATION BE FURNISHED FROM IT WITHOUT THE PRIOR WRITTEN AUTHORITY OF ALAN WARD ARCHITECTS.

# Letchford House



PLOT 1  
PLOT 2