



The Terrace, Barnes, SW13

riverhomes.co.uk

The Terrace

A delightful six bedroom family home built circa 1763. Grade II listed and offering a truly enchanting view, this house offers a harmonious combination of period proportions and practical living space. Situated on The Terrace, Barnes village - one of South West London's most sought after roads - the house overlooks the Thames towards Dukes Meadow. This aspect offers a skyline which would be hard to imagine in such a convenient location, being so well served for shops, bars and public transport. The property comprises two buildings - the main historic house and a large, practical annexe built circa 2006. The accommodation in the main house comprises four double bedrooms, two bathrooms (one of which is en suite to the master bedroom), and a substantial open plan kitchen reception with French doors leading to a sunny patio garden. At the end of the garden and with its own entirely discreet entrance lies the two storey annexe. This offers a large open plan reception/kitchen/studio space with a spiral staircase leading to two double bedrooms and a bathroom. Clearly there are myriad uses for such a substantial



annexe including home office, granny/nanny flat or teenage den. There are excellent transport links close by for fast train services into Waterloo for the commuter from Barnes Bridge and Barnes Stations as well as bus services to Hammersmith Underground and bus station. For the motorist, the property is within a short drive of both the A3 and M4. There are some outstanding schools in the area including The Harrodian, St Pauls' and the Swedish school in North Barnes as well as the renowned Barnes Primary School. A truly historic house in a beautiful location - viewings are rarely so highly recommended. EPC rating C.

Key information:

Local Authority: London Borough of Richmond upon Thames

Internal Area: 2,521 sq. ft. / 234 sq. m.

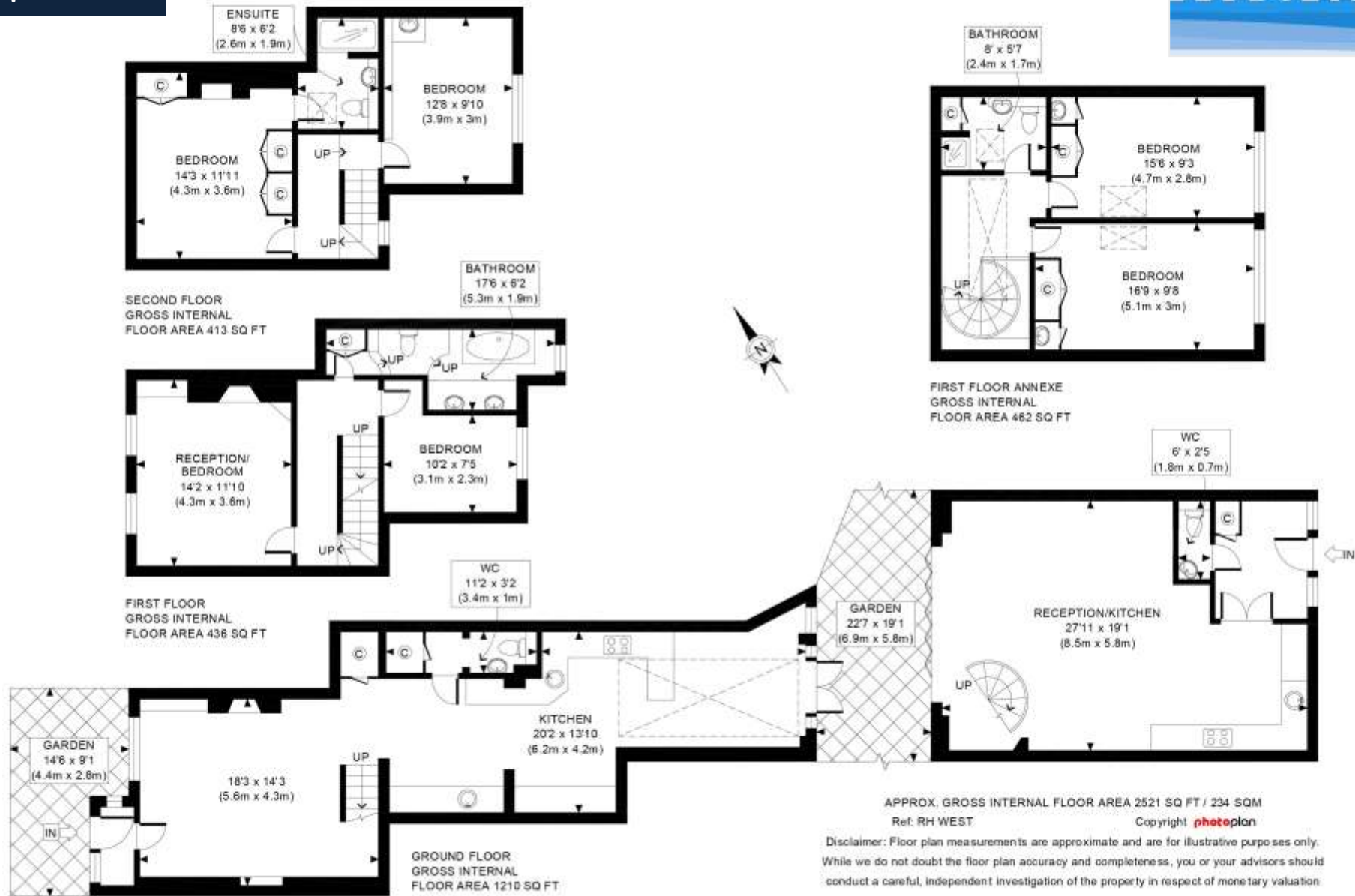
Tenure: Freehold

Asking price: Price on application

The Terrace, SW13



Floor plan



For clarification; These particulars are believed to be correct but their accuracy is not guaranteed and do not form part of any contract. Any photographs are intended as a guide only and it should not be assumed that any of the fixtures / fittings are included in any sale. Appliances, including central heating, have not been tested. All lease, service charge and ground rent details, if shown, have been provided by the vendor and have not been verified. If you require clarification of any points please contact us

1-3 Lower Richmond Road, London, SW15 1EJ

Phone: 020 8788 6000 Fax: 020 8780 3000 Email: central@riverhomes.co.uk

riverhomes.co.uk