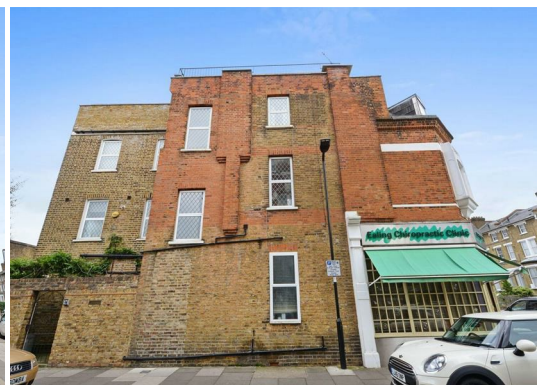




HELLIWELL & Co.



The Grove, Ealing, W5

POA

Ideal Purchase for Investors – Approximately 3,028.SQFT - Freehold Property – Shop, Basement and Flat – Brilliant Location – Multiple Transport Links – Rear Garden Space – Roof Terrace.

A rare opportunity to acquire this end of terrace freehold property which comprises a shop front, a basement, a three bedroom flat and outside space including a rear courtyard and a roof terrace. Arranged over three floors and measuring over 3,000.sq.ft. the property is bright and spacious throughout.

Situated in the heart of Ealing Broadway, The Grove is ideally located for access to Ealing Broadway's tube station (Central and District lines, mainline and future Crossrail) and buy shopping centre. There are multiple bus routes in the area, beautiful open spaces including Lammas and Walpole Parks and an array of Ealing's local shops, cafes, restaurants and bars.

- Ideal Purchase for Investors
- End of Terrace Corner Plot
- Multiple Transport Links
- Approximately 3,028.SQFT
- Shop, Basement and Flat
- Rear Garden Space
- Freehold Property
- Brilliant Location
- Roof Terrace

