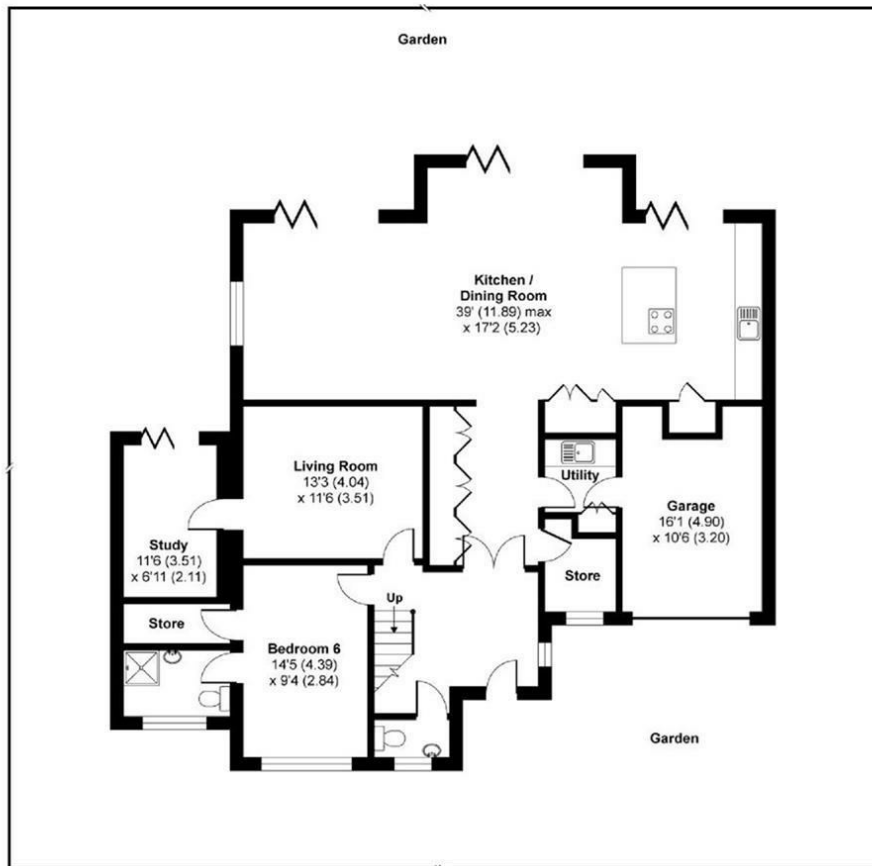


**Thetford Road
New Malden
KT3 5DS**

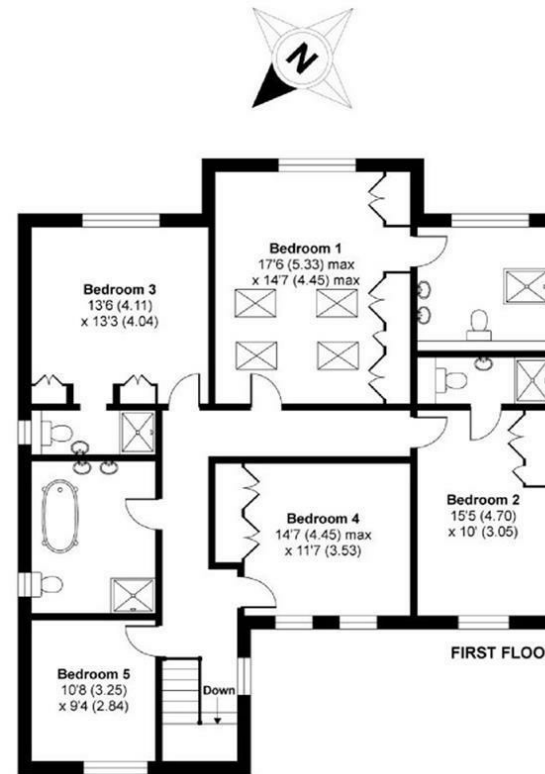
£1,695,000



APPROX. GROSS INTERNAL FLOOR AREA 2944 SQ FT 273.5 SQ METRES (INCLUDES GARAGE)



GROUND FLOOR



FIRST FLOOR

This floor plan was constructed using measurements provided to Niche Communications by a third party. Copyright nichecom.co.uk 2017 Produced for Chase Buchanan REF : 161150

- Imposing detached family residence
- Masses of entertaining space
- 100ft south facing garden
- Good access to City of London
- Extended and fully refurbished
- Versatile layout to suit a family
- Outstanding schools nearby
- Close to village and amenities
- Beautifully finished throughout
- EPC Rating C

For more information or to book a viewing, please contact:

020 8948 1331

richmond@chasebuchanan.london

20 Red Lion Street, Richmond, TW9 1RW



Chase Buchanan

Our community, your home

chasebuchanan.london

Care has been taken in the preparation of these particulars, however, their accuracy is not guaranteed and they do not form part of any contract. Measurements stated must be considered maximum.

Energy Efficiency Rating		
	Current	Potential
Very energy efficient - lower running costs		
(92-100) A		
(81-91) B		
(69-80) C		
(55-65) D		
(39-54) E		
(21-38) F		
(1-20) G		
Not energy efficient - higher running costs		
England & Wales	EU Directive 2002/91/EC	

Environmental Impact (CO ₂) Rating		
	Current	Potential
Very environmentally friendly - lower CO ₂ emissions		
(92-100) A		
(81-91) B		
(69-80) C		
(55-65) D		
(39-54) E		
(21-38) F		
(1-20) G		
Not environmentally friendly - higher CO ₂ emissions		
England & Wales	EU Directive 2002/91/EC	