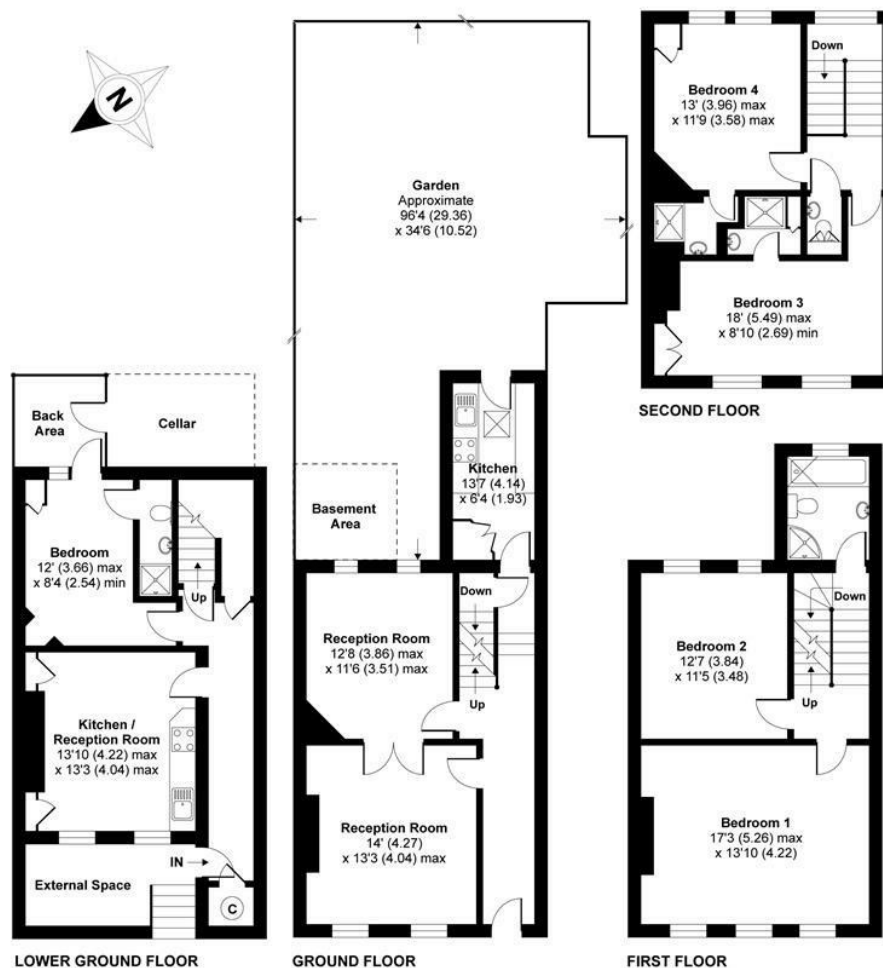


**Ormond Road
Richmond
TW10 6TH**

£1,995,000

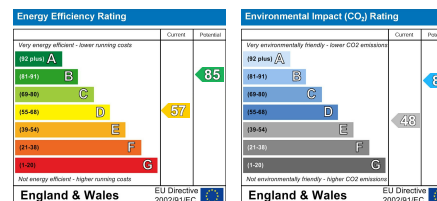


APPROX. GROSS INTERNAL FLOOR AREA 2095 SQ FT 194.6 SQ METRES



Copyright nichecom.co.uk 2017 Produced for Chase Buchanan REF : 204900

Care has been taken in the preparation of these particulars, however, their accuracy is not guaranteed and they do not form part of any contract. Measurements stated must be considered maximum.



- Grade II listed family home
- Very desirable location
- South-west facing walled garden
- Self-contained flat to lower floor
- Close to all amenities
- Richmond Park nearby
- Excellent transport links
- Outstanding schools in close proximity
- Vendor suited
- EPC Rating - D

For more information or to book a viewing, please contact:

020 8948 1331

richmond@chasebuchanan.london

20 Red Lion Street, Richmond, TW9 1RW

Chase Buchanan

Our community, your home

chasebuchanan.london