

# RENAISSANCE

HIGHFIELD SPRING, WAVERLEY, ROTHERHAM S60 5TR



A FANTASTIC COLLECTION OF 3 & 4 BEDROOM HOMES



**BARRATT**  
HOMES

# WELCOME TO RENAISSANCE

HIGHFIELD SPRING, WAVERLEY, ROTHERHAM S60 5TR

Set close to the Peak District Park, Renaissance couldn't be better placed for semi-rural living, with excellent access to mains roads and the motorway network. Waverley is a new village, which will feature a new school, family pub and choice of shops.

Buyers visiting the development will be able to view the two beautiful new showhomes that reflect the local area and complement the surroundings, mixing different architectural styles: the Chesham and the Cambridge house types. The décor of both showhomes aims to create a feeling of quality and luxury as the homes radiate a feeling of softness and sophistication through the use of fabric and colours to truly reflect the stylish nature of the two homes.

The detached four-bedroom Chesham boasts a smart, contemporary feel based on a colour scheme of taupe, ivory and duck egg using a mix of embroidered and textured fabrics throughout. Downstairs, the home features an open plan kitchen dining room with French doors to the garden. The four bedrooms upstairs are all well sized, with the master bedroom also featuring its own en suite.

The second showhome is the beautifully designed four-bedroom Cambridge, which uses a colour scheme of soft greens and soft pinks mixed with ivory and taupe, creating a classical and homely feel. This home offers a modern family dining kitchen and breakfast areas and a glazed bay leading to the garden. Upstairs, there is a large master bedroom with an en suite shower room, two double bedrooms, a single bedroom and a family bathroom.

Buyers can rest assured that all properties come with a ten-year National House Building Council (NHBC) warranty. Barratt Homes has achieved the maximum 5 star house-builder rating in an annual customer satisfaction survey, run by the Home Builders Federation (HBF) for the fifth year running.

Whether you are a first time buyer or looking to take your next step up the property ladder, Barratt Homes has a great range of tailor-made deals to choose from to help you make the move that's right for you.



#### HOSPITALS

**Rotherham Hospital**  
Moorgate Road  
Rotherham S60 2UD  
Tel: 01709 820000

**Sheffield Children's Hospital**  
The Children's Hospital Sheffield  
Western Bank  
Sheffield S10 2TH  
Tel: 0114 271 7000

#### DOCTORS

**Treeton Medical Centre**  
10 Arundel Street  
Treeton  
Rotherham S60 5PW  
Tel: 0114 269 2600

#### Handsworth Medical Practice

432 Handsworth Road  
Sheffield S13 9BZ  
Tel: 0114 269 7505

#### CHEMISTS

**Lloyds Pharmacy**  
292-294 Handsworth Road  
Handsworth  
Sheffield S13 9BX  
Tel: 0114 269 2461

#### Weldrake H I Ltd

26 Main Street  
Catcliffe  
Rotherham S60 5SR  
Tel: 01709 382266

#### DENTIST

**Orgreave Dental Surgery**  
25 Orgreave Lane  
Handsworth  
Sheffield S13 9NE  
Tel: 0114 269 4808

#### VETS

**Springfield Veterinary Group**  
39 Moorgate Road  
Rotherham S60 2AD  
Tel: 01709 377241

#### PSDA Pet Aid Hospital

14 Newhall Road  
Sheffield S9 2DL  
Tel: 0114 243 3232

#### POST OFFICE

**Catcliffe Post Office**  
3 Saint Mary's Drive  
Catcliffe, Rotherham  
01709 365 094

#### SUPERMARKETS

**Morrisons Supermarkets PLC**  
Poplar Way, Catcliffe  
Rotherham S60 5TR  
Tel: 01709 839356

#### ASDA Sheffield Supercentre

Handsworth Road  
Handsworth  
Sheffield S13 9BN  
Tel: 0114 263 5000

#### LOCAL ATTRACTIONS

**Meadowhall Shopping Centre/ Cinema/Dining**  
Meadowhall Centre Ltd  
Management Suite  
1 The Oasis  
Meadowhall Centre  
Sheffield  
S9 1EP  
Tel: 0845 600 6800

#### Valley Centertainment/ Cinema/Dining/Bowling/ Laser Quest

Broughton Lane  
Sheffield S9 2EP  
Tel: 0114 242 4078

#### Ponds Forge International Sports Centre

Sheaf Street  
Sheffield  
S1 2BP  
Tel: 0114 223 3400

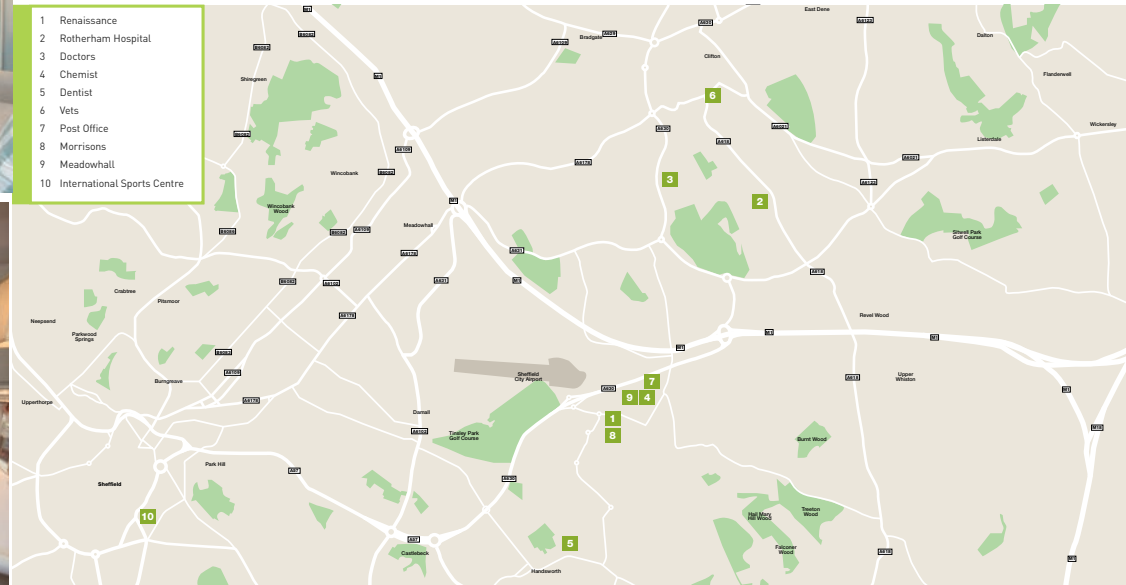
#### Rother Valley Country Park

Mansfield Rd  
Sheffield  
Tel: 0114 247 1452

#### TRANSPO

**Sheffield Train Station**  
Sheaf Street  
Sheffield  
S1 2BP  
Tel: 0845 712 5678

- 1 Renaissance
- 2 Rotherham Hospital
- 3 Doctors
- 4 Chemist
- 5 Dentist
- 6 Vets
- 7 Post Office
- 8 Morrisons
- 9 Meadowhall
- 10 International Sports Centre





# RENAISSANCE, WAVERLEY

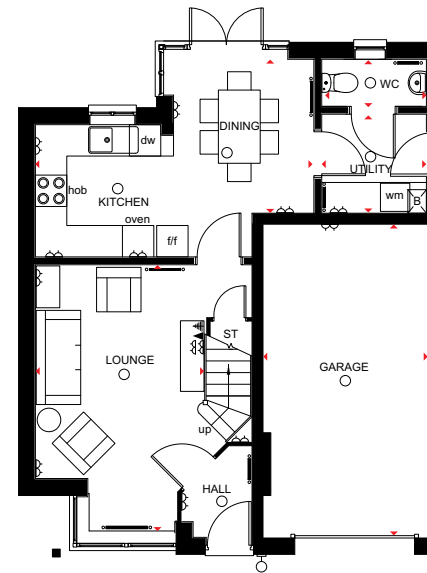
## DEVELOPMENT LAYOUT



## 3 BEDROOM DETACHED HOME



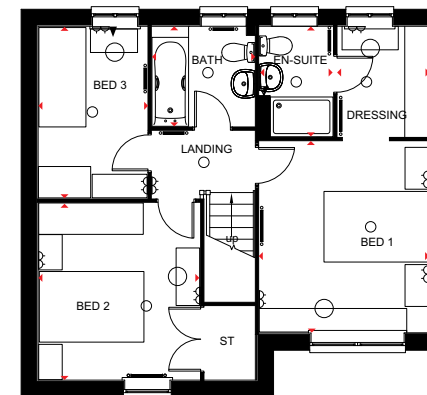
- A fabulous 3 bedroom detached home offering family kitchen and dining room with French doors opening onto the rear garden
- The ground floor also boasts a comfortable lounge with bay window and separate utility room
- First floor features two double bedrooms with en suite and dressing area to master bedroom, a single bedroom and family bathroom
- This delightful home also comes with an integral garage



### Ground Floor

Lounge	5115 x 3264mm	16'9" x 10'9"
Kitchen/Dining	5325 x 2943mm	17'6" x 9'8"
Utility	2002 x 1893mm	6'7" x 6'3"
WC	2002 x 900mm	6'7" x 2'11"
Garage	6000 x 3150mm	19'8" x 10'4"

(Approximate dimensions)



### First Floor

Bedroom 1	3665 x 3248mm	12'0" x 10'8"
Dressing Area	2112 x 1749mm	6'11" x 5'8"
En Suite	2112 x 1410mm	6'11" x 4'7"
Bedroom 2	3387 x 3096mm	11'1" x 10'2"
Bedroom 3	3281 x 2089mm	10'9" x 6'10"
Bathroom	1965 x 1912mm	6'5" x 6'3"

(Approximate dimensions)

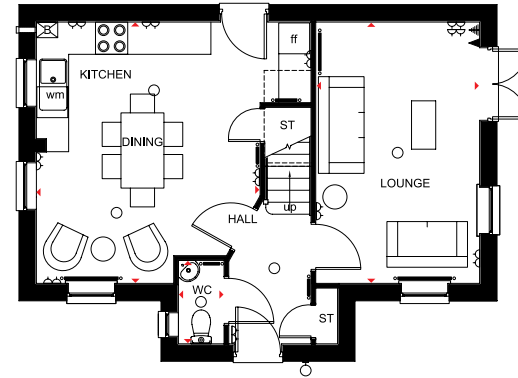
<b>KEY</b>	○ Light fitting	⚡ T.V. aerial socket	B Boiler	l/f Fridge/freezer space
	⏏ Electric socket	⚡ Shaver socket	ST Store	dw Dishwasher space
	◀ Telephone outlet point	— Radiator	w/m Washing machine space	◀ Dimension location



## 3 BEDROOM DETACHED HOME



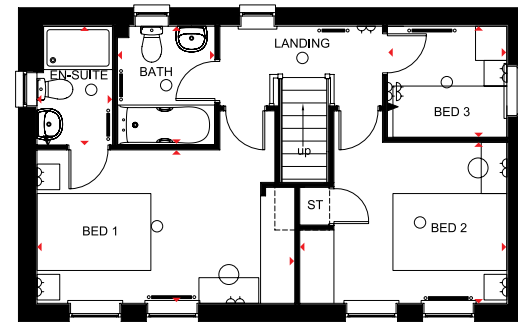
- A sought-after 3 bedroom detached home featuring dual aspect lounge with French doors leading to the garden
- Stylish open-plan kitchen with dining and family areas
- First floor boasts 2 double bedrooms with en suite shower room to master bedroom, 1 single bedroom and family bathroom



### Ground Floor

Lounge	4863 x 3050mm	15'11" x 10'0"
Kitchen/Dining	4863 x 4165mm	15'11" x 13'8"
WC	1553 x 849mm	5'1" x 2'9"

(Approximate dimensions)



### First Floor

Bedroom 1	4513 x 2692mm	15'5" x 8'10"
En Suite	2083 x 1326mm	6'10" x 4'4"
Bedroom 2	3650 x 2825mm	11'11" x 9'3"
Bedroom 3	2096 x 1950mm	6'11" x 6'5"
Bathroom	2083 x 1710mm	6'10" x 5'7"

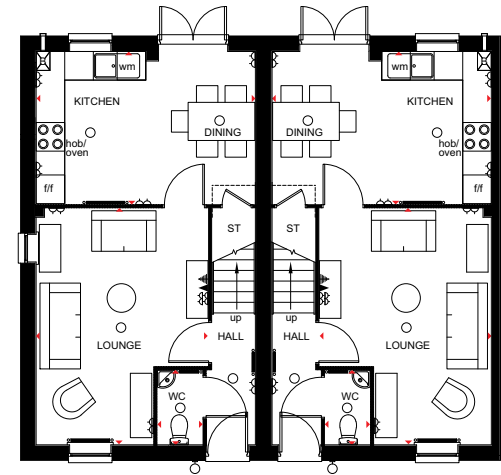
(Approximate dimensions)

<b>KEY</b>	○ Light fitting	▲ T.V. aerial socket	B Boiler	f/f Fridge/freezer space
	◻ Electric socket	▲ Shaver socket	ST Store	◻ Dimension location
	◻ Telephone outlet point	— Radiator	wm Washing machine space	

## 3 BEDROOM TERRACED HOUSE



- A lovely 3 bedroom home featuring free-flowing kitchen with dining and family areas and French doors opening onto the garden
- A comfortable lounge is also located on the ground floor
- First floor provides 2 double bedrooms with en suite to master bedroom, 1 single bedroom and family bathroom

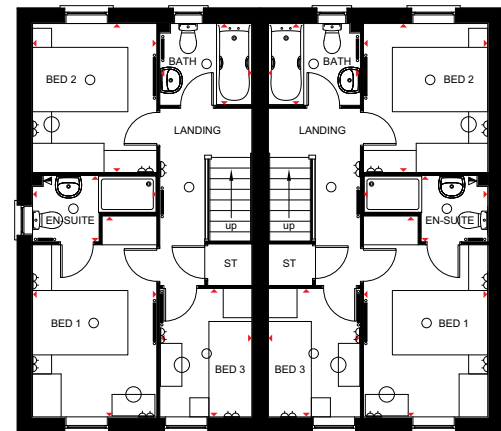


### Ground Floor

Lounge	4960 x 3607mm	16'3" x 11'10"
Kitchen/Dining	4600 x 3202mm	15'1" x 10'6"
WC	1563 x 944mm	5'2" x 3'1"

(Approximate dimensions)

\*Window dependant on site layout



### First Floor

Bedroom 1	4201 x 2595mm	13'9" x 8'6"
En Suite	2594 x 1365mm	8'6" x 4'6"
Bedroom 2	3113 x 2595mm	10'3" x 8'6"
Bedroom 3	2681 x 1918mm	8'10" x 6'3"
Bathroom	1918 x 1703mm	6'3" x 5'7"

(Approximate dimensions)

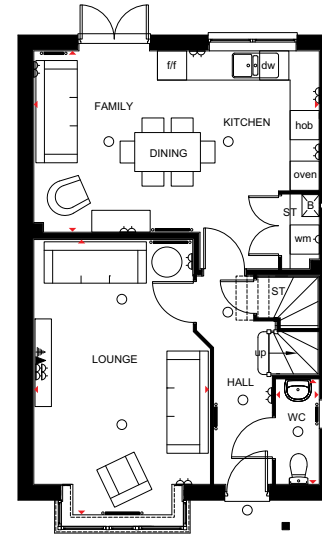
<b>KEY</b>	○ Light fitting	⚡ T.V. aerial socket	B Boiler	f/f Fridge/freezer space
	⏻ Electric socket	⚡ Shaver socket	ST Store	↔ Dimension location
	☎ Telephone outlet point	— Radiator	wm Washing machine space	



## 4 BEDROOM DETACHED HOME



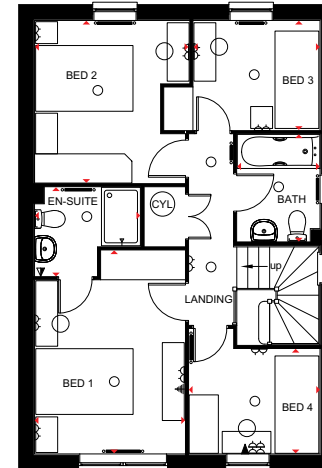
- A delightful 4 bedroom detached home offering contemporary kitchen with dining and family areas and French doors leading to the rear garden
- Ground floor also boasts a full bay-fronted lounge
- The first floor features two double bedrooms, the master with en suite, two single bedrooms and modern family bathroom



### Ground Floor

Lounge	5692 x 3617mm	18'8" x 11'10"
Kitchen	5865 x 3725mm	19'3" x 12'3"
WC	2153 x 889mm	7'1" x 2'11"

(Approximate dimensions)



### First Floor

Bedroom 1	4178 x 3088mm	13'8" x 10'2"
En Suite	2176 x 1823mm	7'2" x 6'0"
Bedroom 2	3339 x 3178mm	10'11" x 10'5"
Bedroom 3	2599 x 2251mm	8'6" x 7'5"
Bedroom 4	2689 x 2153mm	8'10" x 7'1"
Bathroom	2198 x 1701mm	7'3" x 5'7"

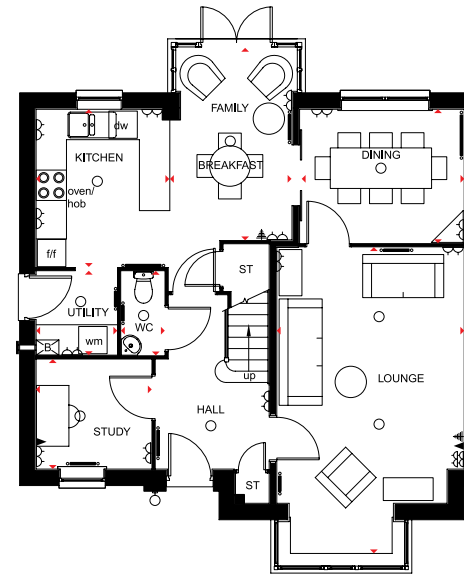
(Approximate dimensions)

<b>KEY</b>	○ Light fitting	⚡ T.V. aerial socket	B Boiler	wm Washing machine space	◀▶ Dimension location
	⏏ Electric socket	⚡ Shaver socket	ST Store	f/f Fridge/freezer space	
	◀ Telephone outlet point	— Radiator	CYL Cylinder	dw Dishwasher space	

## 4 BEDROOM DETACHED HOME



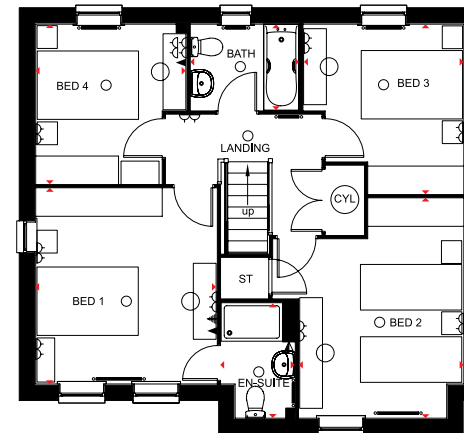
- Beautifully presented 4 bedroom detached home featuring kitchen with family and breakfast areas and glazed bay leading to the garden
- Delightful lounge, study and dining room with French doors opening onto the garden
- First Floor comprises master bedroom with en suite shower room, three further bedrooms and a family bathroom



### Ground Floor

Kitchen Area	3111 x 2675mm	10'2" x 8'8"
Family Breakfast Area	3824 x 2365mm	12'6" x 7'11"
Utility	1656 x 1595mm	5'5" x 5'3"
WC	1656 x 850mm	5'5" x 2'9"
Lounge	6060 x 3700mm	19'11" x 12'2"
Dining Room	3250 x 2640mm	10'8" x 8'8"
Study	2276 x 2161mm	7'6" x 7'1"

(Approximate dimensions)



### First Floor

Bedroom 1	3861 x 3549mm	12'8" x 11'9"
En Suite	2279 x 1464mm	7'6" x 4'10"
Bedroom 2	4338 x 3252mm	14'3" x 10'8"
Bedroom 3	3352 x 3164mm	11'0" x 10'5"
Bedroom 4	3154 x 2976mm	10'4" x 9'9"
Bathroom	2137 x 1700mm	7'0" x 5'7"

(Approximate dimensions)

<b>KEY</b>	○ Light fitting	⚡ T.V, aerial socket	B Boiler	wm Washing machine space	↔ Dimension location
	⏏ Electric socket	⚡ Shaver socket	ST Store	f/f Fridge/freezer space	
	☎ Telephone outlet point	— Radiator	CYL Cylinder	dw Dishwasher space	



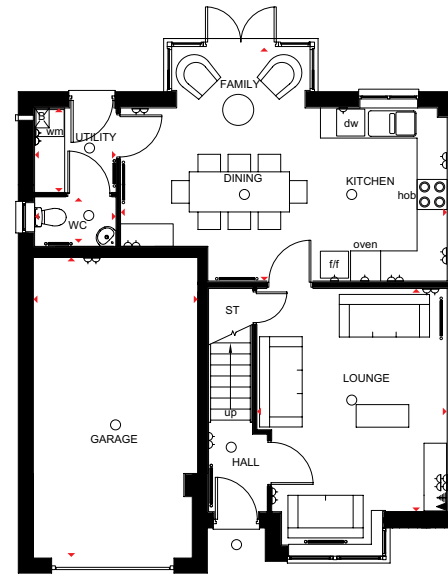
# KENNINGTON

THE CLASSIC  
COLLECTION

## 4 BEDROOM DETACHED HOME



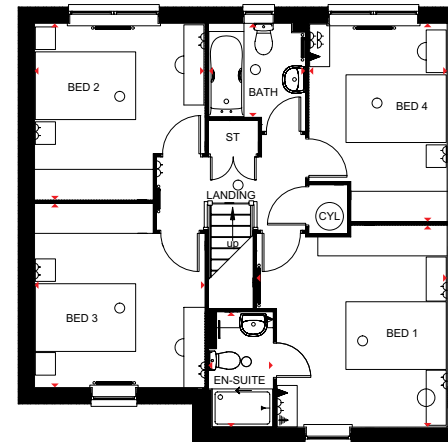
- A superior 4 bedroom home offering stylish kitchen, dining room and family area with full-height glazed bay and French doors leading onto the rear garden
- Bay fronted lounge and utility room are also located on the ground floor
- First floor has four double bedrooms with en suite to master bedroom and family bathroom fitted with contemporary sanitary ware and tiling
- This delightful home also comes with integral garage



### Ground Floor

Lounge	4450 x 3794mm	14'7" x 12'5"
Kitchen/ Family/ Dining Room	6514 x 4675mm	21'4" x 15'4"
Utility	1685 x 1626mm	5'6" x 5'4"
WC	1624 x 982mm	5'4" x 3'3"
Garage	6000 x 3280mm	19'8" x 10'9"

(Approximate dimensions)



### First Floor

Bedroom 1	4013 x 3794mm	13'2" x 12'5"
En Suite	2298 x 1275mm	7'6" x 4'2"
Bedroom 2	3950 x 2746mm	12'11" x 9'0"
Bedroom 3	3664 x 3389mm	12'0" x 11'1"
Bedroom 4	3513 x 3389mm	11'6" x 11'1"
Bathroom	1863 x 1920mm	6'1" x 6'4"

(Approximate dimensions)

<b>KEY</b>	○ Light fitting	⚡ T.V. aerial socket	— Towel rail	CYL Cylinder	dw Dishwasher space
⏏ Electric socket	⚡ Shaver socket	B Boiler	wm Washing machine space	◀ Dimension location	
⏏ Telephone outlet point	— Radiator	ST Store	f/f Fridge/freezer space		

barratthomes.co.uk

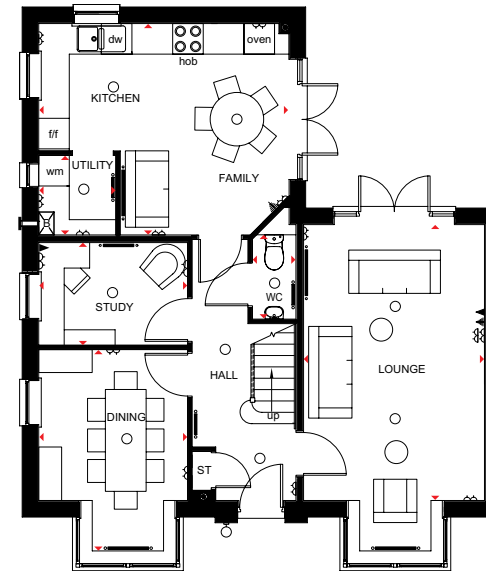
  
**BARRATT**  
HOMES

IMPORTANT NOTICE: (Computer Generated) Images are for illustrative purposes only. Individual features such as windows, brick and other materials' colours may vary, as may heating and electrical layouts. Floor plans are intended to give a general indication of the proposed floor layout only. The dimensions are accurate to within +/- or 50mm. Dimensions should not be used for carpet sizes, appliance spaces or items of furniture. Please ask our sales adviser for details of the treatments specified for individual plots. (Computer Generated) Images and dimensions are not intended to form part of any contract or warranty. Furniture and landscaping is shown for illustrative purposes only.

## 4 BEDROOM DETACHED HOME



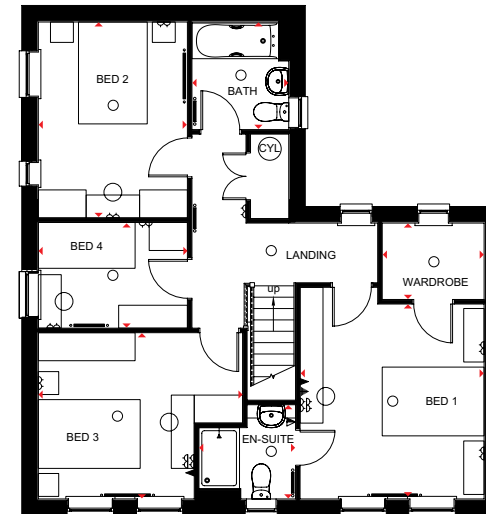
- A beautifully presented 4 bedroom detached home featuring kitchen with family and breakfast areas with French doors leading to the garden
- Separate study and dining room
- Spacious lounge with French doors opening onto the garden
- First floor comprises master bedroom with walk in wardrobe and en-suite
- 2 further double bedrooms, 1 single bedroom and family bathroom



### Ground Floor

Lounge	5416 x 3552mm	17'9" x 11'8"
Dining Room	3990 x 2924mm	13'1" x 9'0"
Study	2924 x 2012mm	9'7" x 6'7"
Kitchen/ Family Room	4916 x 4150mm	16'2" x 13'7"
Utility	1561 x 1512mm	5'11" x 5'0"
WC	1655 x 854mm	5'5" x 2'10"

(Approximate dimensions)



### First Floor

Bedroom 1	3827 x 3613mm	12'7" x 11'10"
En Suite	1900 x 1850mm	6'3" x 6'1"
Dressing Room	2000 x 1500mm	6'7" x 4'11"
Bedroom 2	3846 x 2927mm	12'7" x 9'7"
Bedroom 3	4010 x 3264mm	13'2" x 10'9"
Bedroom 4	2927 x 2075mm	9'7" x 6'10"
Bathroom	2112 x 1900mm	6'11" x 6'3"

(Approximate dimensions)

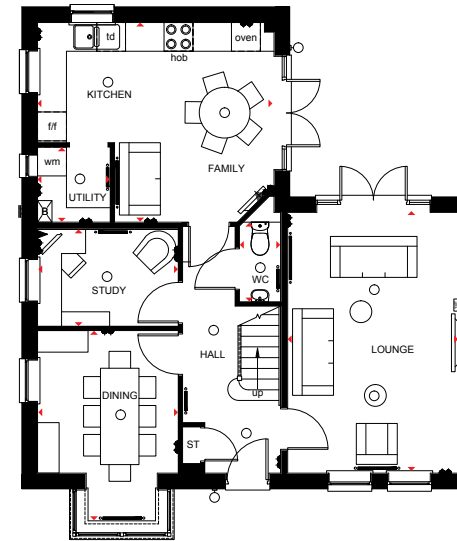
<b>KEY</b>	○ Light fitting	⬆ T.V. aerial socket	B Boiler	wm Washing machine space	◀▶ Dimension location
	⏏ Electric socket	⬆ Shaver socket	ST Store	f/f Fridge/freezer space	
	⏏ Telephone outlet point	— Radiator	CYL Cylinder	dw Dishwasher space	



## 4 BEDROOM DETACHED HOME



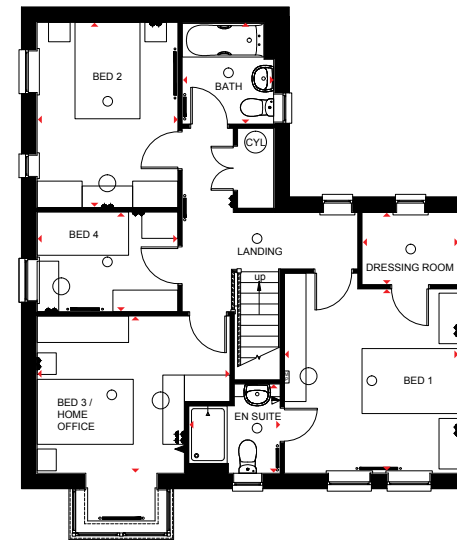
- A beautifully presented 4 bedroom detached home featuring kitchen with family and breakfast areas with French doors leading to the garden
- Separate study and dining room
- Spacious lounge with French doors opening onto the garden
- First floor comprises master bedroom with walk-in wardrobe and en suite
- Two further double bedrooms, a single bedroom and family bathroom



### Ground Floor

Lounge	5416 x 3552mm	17'9" x 11'8"
Dining Room	3990 x 2924mm	13'1" x 9'0"
Study	2924 x 2012mm	9'7" x 6'7"
Kitchen/ Family Room	4916 x 4150mm	16'2" x 13'7"
Utility	1561 x 1512mm	5'11" x 5'0"
WC	1655 x 854mm	5'5" x 2'10"

(Approximate dimensions)



### First Floor

Bedroom 1	3827 x 3613mm	12'7" x 11'10"
En Suite	1900 x 1850mm	6'3" x 6'1"
Dressing Room	2000 x 1500mm	6'7" x 4'11"
Bedroom 2	3846 x 2927mm	12'7" x 9'7"
Bedroom 3	4010 x 3264mm	13'2" x 10'9"
Bedroom 4	2927 x 2075mm	9'7" x 6'10"
Bathroom	2112 x 1900mm	6'11" x 6'3"

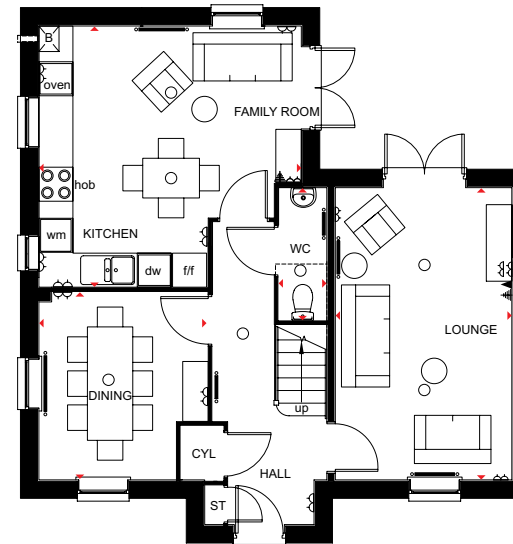
(Approximate dimensions)

<b>KEY</b>	○ Light fitting	◀ T.V. aerial socket	— Radiator	CYL Cylinder	td Tumble dryer space
	◀ Electric socket	◀ Media plate	B Boiler	wm Washing machine space	◀ Dimension location
	◀ Telephone outlet point	◀ Shaver socket	ST Store	f/f Fridge/freezer space	

## 4 BEDROOM DETACHED HOME



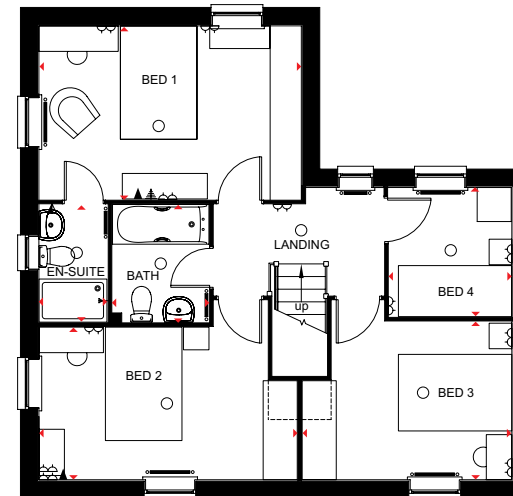
- A beautifully presented 4 bedroom home featuring open-plan kitchen with breakfast and family areas and French doors leading to the garden
- Separate dual aspect dining room and lounge with French doors leading to the garden
- The first floor boasts master bedroom with en suite shower room, 2 further double bedrooms, 1 single bedroom and family bathroom



### Ground Floor

Kitchen	4628 x 4605mm	15'2" x 15'1"
Family Room	3310 x 2974mm	10'10" x 9'9"
Dining Room	5153 x 3113mm	16'11" x 10'3"
WC	2338 x 853mm	7'9" x 2'9"

(Approximate dimensions)



### First Floor

Bedroom 1	4628 x 3062mm	15'2" x 10'1"
En Suite	2075 x 1211mm	6'10" x 4'0"
Bedroom 2	4556 x 2691mm	14'11" x 8'10"
Bedroom 3	3697 x 2788mm	12'2" x 9'2"
Bedroom 4	2156 x 2277mm	7'1" x 7'6"
Bathroom	2075 x 1700mm	6'10" x 5'7"

(Approximate dimensions)

<b>KEY</b>	○ Light fitting	⚡ T.V. aerial socket	B Boiler	wm Washing machine space	◀▶ Dimension location
	⏏ Electric socket	⚡ Shaver socket	ST Store	f/f Fridge/freezer space	
	☎ Telephone outlet point	— Radiator	CYL Cylinder	dw Dishwasher space	



## 4 BEDROOM SEMI-DETACHED HOME



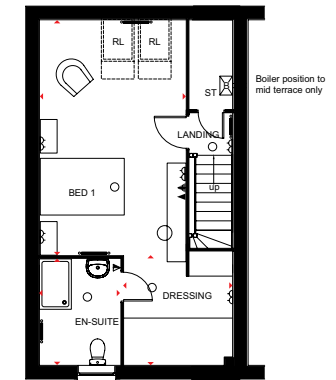
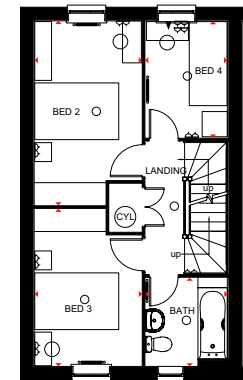
- A stylish 2½ storey, 4 bedroom home with open-plan lounge and dining room with glazed bay opening onto the rear garden
- Smart modern kitchen with breakfast area
- First floor boasts 2 double bedrooms, 1 single bedroom and family bathroom
- Master bedroom with en suite shower room and dressing area



### Ground Floor

Lounge/ Dining Room	5655 x 4600mm	18'7" x 15'1"
Kitchen	4445 x 2481mm	14'7" x 8'2"
WC	1726 x 852mm	5'8" x 2'10"

(Approximate dimensions)



### First Floor

Bedroom 2	4391 x 2562mm	14'5" x 8'5"
Bedroom 3	3750 x 2562mm	12'4" x 8'5"
Bedroom 4	2784 x 1961mm	9'2" x 6'5"
Bathroom	2112 x 1961mm	6'11" x 6'5"

(Approximate dimensions)

### Second Floor

Bedroom 1	5602 x 3484mm	18'5" x 11'5"
En Suite	2535 x 1929mm	8'4" x 6'4"
Dressing Area	2624 x 2594mm	8'7" x 8'6"

(Approximate dimensions)

<b>KEY</b>	○ Light fitting	⚡ T.V. aerial socket	B Boiler	wm Washing machine space	◀▶ Dimension location
	⏻ Electric socket	⚡ Shaver socket	ST Store	f/f Fridge/freezer space	RL Roof light
	☎ Telephone outlet point	— Radiator	CYL Cylinder	dw Dishwasher space	

RENAISSANCE  
Highfield Spring,  
Waverley,  
Rotherham  
S60 5TR

[barratthomes.co.uk](http://barratthomes.co.uk) **0844 811 55 33**

Images and site layout are intended for illustrative purposes only and should be treated as general guidance only. Site layout including parking arrangements, [social/affordable housing, community buildings, play areas and public open spaces] may change to reflect changes in the planning permission for the development. Please speak to your solicitor to whom full details of any planning consents including layout plans will be available. Site layouts and landscaping are not intended to form part of any contract or warranty unless specifically incorporated in writing into the contract. [Seacrest Gardens is a marketing name only and may not be the designated postal address].



**BARRATT**  
HOMES