

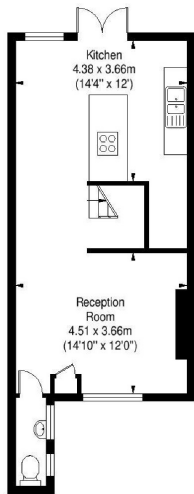


Montpelier - £725,000

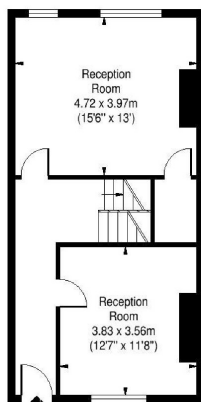
5 bed house

112 Richmond Road, BS6 5ER

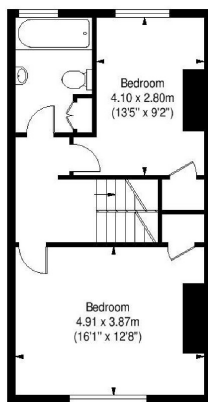
Lower Ground Floor
APPROX. 42.3 SQ M / 455.3 SQ FT



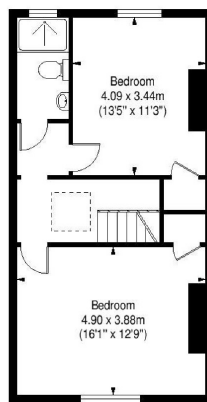
Ground Floor
APPROX. 45.6 SQ M / 490.8 SQ FT



First Floor
APPROX. 46.7 SQ M / 502.7 SQ FT



Second Floor
APPROX. 47.2 SQ M / 508.1 SQ FT



APPROX. GROSS INTERNAL FLOOR AREA 181.8 SQ M / 1956.9 SQ FT
112, Richmond Road, BRISTOL



A simply stunning period town house dating back to the 1850's, located on a sought after road in upper Montpelier. This position provides easily access to many local amenities, these include St Andrews Park, Gloucester Road, city centre, major transport links and some very popular schools to name a few. The interior offers a perfect blend of both retained period features, modern fixtures and fitting - all maintained to the highest of standards.

Arranged over four spacious levels, gives a flexible layout and from 3 levels are some amazing far reaching views. In brief the top floor has two double bedrooms, a shower room, and access to two loft spaces. The first floor has two further bedrooms and a family bathroom. The hall floor has a reception room to the front that can also be used as bedroom 5. The rear has a full width reception room that is filled with natural light and has stripped wooden floor boards. The central staircase leads down to the ground floor which provides an open plan living space. This floor is made up of a front reception area complete with wood burning stove and a separate WC, The rear has a further full width kitchen/breakfast room that leads via french doors to the garden. As you walk out into the garden a covered patio ideal for entertaining is first up. Beyond here is a level mainly lawned garden that has a relatively private feel at the end. Also of note here is the southerly aspect and rear access.



Bishopston Branch

201 Gloucester Road, Bishopston, Bristol, BS7 8BG

Call: 0117 9425855

Mail: bishopstonsales@oceanhome.co.uk

Search: oceanhome.co.uk

References to the Tenure of a Property are based on information supplied by the Seller. The Agent has not had sight of the title documents. Lease details, service ground rent (where applicable) are given as a guide only and should be checked and confirmed by your solicitor prior to exchange of contracts.