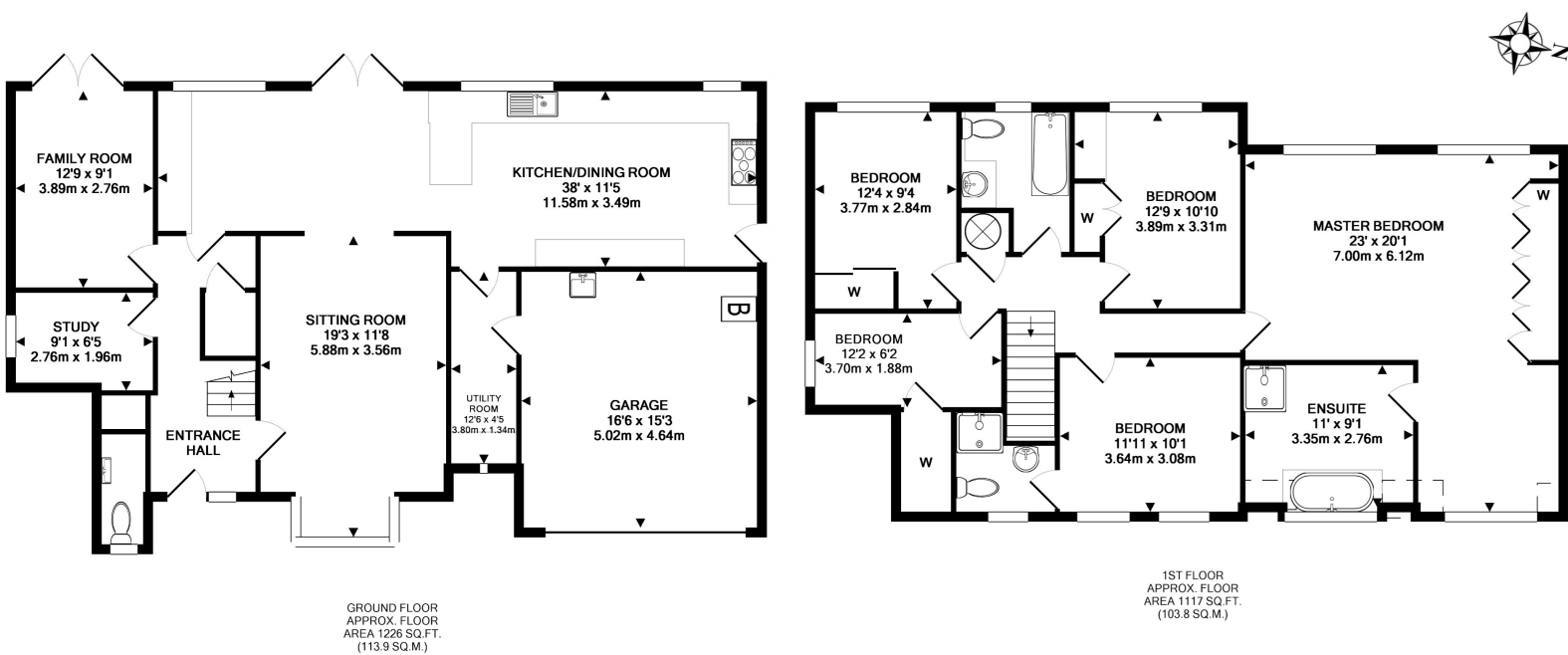
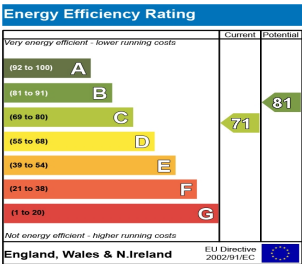




5 | Heathlands | Tadworth | Surrey  
KT20 5RA



TOTAL APPROX. FLOOR AREA 2343 SQ.FT. (217.7 SQ.M.)  
Whilst every attempt has been made to ensure the accuracy of the floor plan contained here, measurements of doors, windows, rooms and any other items are approximate and no responsibility is taken for any error, omission, or mis-statement. This plan is for illustrative purposes only and should be used as such by any prospective purchaser. The services, systems and appliances shown have not been tested and no guarantee as to their operability or efficiency can be given  
Made with Metropix ©2018



These particulars, whilst believed to be accurate are set out as a general guide only for guidance and do not constitute any part of an offer or contract. Intending purchasers should not rely on them as statements of representation of fact, but must satisfy themselves by inspection or otherwise as to their accuracy. No person in Kennedy's has the authority to make or give any representation or warranty in respect of the property.





## 5 | Heathlands | Tadworth | Surrey KT20 5RA

Set in a small cul-de-sac on the edge of Tadworth village, is this attractive 5 bedroom detached home that is beautifully presented throughout by the current owners.

The accommodation comprises of a large hallway, cloakroom, study, family room, sitting room and wonderful open plan kitchen area with underfloor heating that runs 38' across the back of the house and provides an excellent area for modern living, whilst to the first floor can be found an impressive master bedroom with dressing area and en-suite bathroom, a further bedroom with en-suite shower room, three further bedrooms and family bathroom.

Amongst many of the features are the modern

kitchen which was recently fitted by the current owners, wooden floors, down lighters, modern bathrooms, double glazing, gas fired heating by radiators and more besides. The outside areas are also impressive and serve the property well with a large tarmac driveway providing ample private and visitors' parking, flanked by lawns and giving access to the integral double garage. The rear garden enjoys a secluded aspect with full width paved terrace leading on to formal lawns.

The village of Tadworth is well served by local shops and facilities including independent traders such as butchers, fishmongers, bakers, dry cleaners, vets, and florist as well as banks, restaurants, village supermarket and mainline train station to London. There are a variety of schools within the area including Chinthurst Prep School, an Ofsted rated: Outstanding Primary School and the renowned City of London Freeman's School and Epsom College. Local recreational facilities are located at venues such as Kingswood Golf Club, Surrey Downs Golf Club, David Lloyd in Epsom and Cheam, RAC at

Woodcote Park and others besides.

Overall, this is an exceptional home that has much to offer and has been lovingly cared for by our clients. For further information or to arrange a private viewing, please contact a member of our sales team on 01737 817718 or email us at [info@kennedys-ipa.co.uk](mailto:info@kennedys-ipa.co.uk).

**Price: £995,000**

