



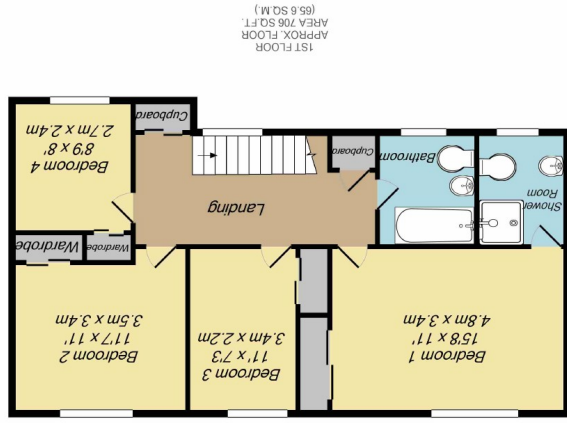
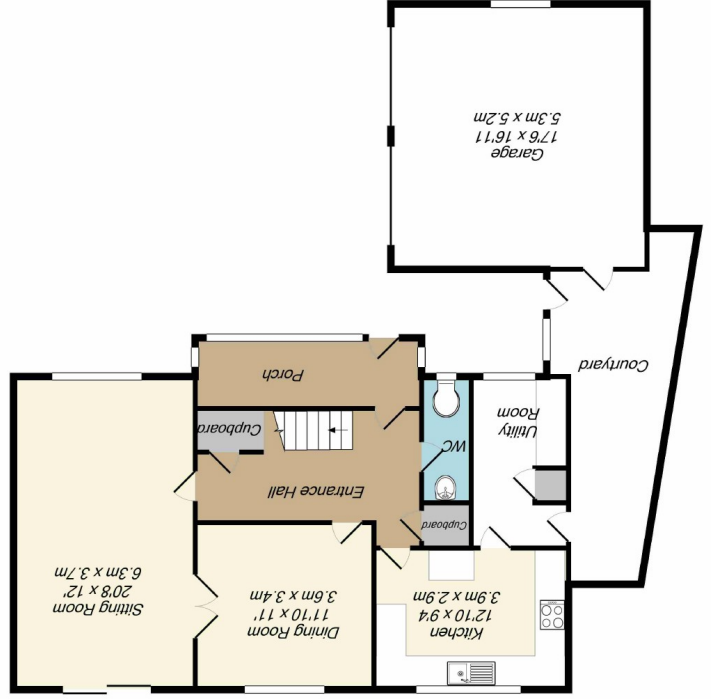
Measurements are approximate. Nothing in these particulars shall be deemed to be a statement that the property is in good structural condition or otherwise, nor that any services, equipment, facilities or appliances have been tested. Purchasers should satisfy themselves on such matters prior to purchase.



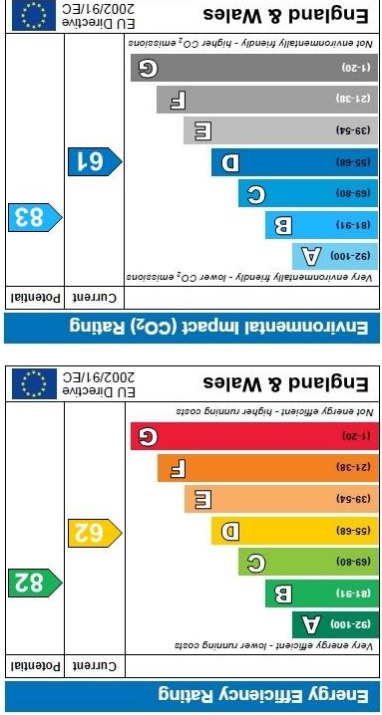
View by appointment with the agents

What every attempt has been made to ensure the accuracy of the floor plan contained here, measurements of doors, windows, rooms and any other items are approximate and no responsibility is taken for any error, omission, or misstatement. This plan is for illustrative purposes only and should be used as such by any prospective purchaser. The services, systems and appliances shown have not been tested and no guarantee as to their operability or efficiency can be given. Made with AutoCAD 2017

GROUND FLOOR
APPROX FLOOR
AREA 1247 SQ.FT.
(115.8 SQ.M.)



1ST FLOOR
APPROX FLOOR
AREA 706 SQ.FT.
(65.5 SQ.M.)



16 Glengarry Way, Friars Cliff, BH23 4EH

- The exclusive Steamer Point Development
- Walking distance of Avon Beach
- Delightful detached home
- Spacious entrance porch
- Sitting room * Dining room
- Fitted kitchen * Separate utility
- Covered courtyard area
- Ground floor cloakroom
- Four first floor bedrooms
- En-suite shower room to master
- Family bathroom
- Double garage
- Well stocked, enclosed rear garden
- Driveway with ample ORP to the front
- Council Tax: Band G



Asking price £795,000



Ideally located on the exclusive Steamer Point Development, being within walking distance of Avon Beach, we are pleased to offer this delightful four bedroom detached home.

The property offers well presented accommodation which comprises: spacious entrance porch, sitting room and separate dining room, fitted kitchen with separate utility and covered courtyard area, ground floor cloakroom, four first floor bedrooms with en-suite shower room to master bedroom and family bathroom, double garage, well stocked, enclosed rear garden and driveway providing ample off-road parking to the front.

This premier location, just yards from some of the area's most beautiful beaches and unspoilt coastline, is within easy reach of Highcliffe Castle Golf Course. Christchurch has a wide range of amenities with extensive facilities further afield in Bournemouth.