

Beresfords

COUNTRY
& Village





SURRIDGES

RECTORY LANE | LATCHINGDON | CHELMSFORD

Within 5 miles of Burnham on Crouch with its extensive sailing | The historic town of Maldon is within 6.9 miles | 15 miles of Chelmsford City with its excellent shopping facilities and mainline train station (journey time to London Liverpool Street within 34 minutes) | North Fambridge train station is within 2.8 miles (journey time to Stratford International is within 45 minutes and London Liverpool Street within 54 minutes) | Three Rivers Golf & Country Club is within 4.5 miles |

A delightful five bedroom country residence set in a private and peaceful location on an idyllic plot of circa 13 acres (stls). Four reception rooms, good size kitchen breakfast room, quadruple garage with games room above, all within close proximity to North Fambridge train station. EPC D

- Immaculate throughout
- Five bedrooms
- Fantastic master suite with walk in wardrobe
- Family bathroom
- Double aspect drawing room
- Kitchen/breakfast room
- Separate utility room
- Double aspect formal dining room
- Quadruple garage with separate utility room
- Day room with adjoining conservatory
- Games room above with fitted kitchen & shower room
- Stunning far reaching countryside views
- 13 acres (stls)
- Lovely formal gardens
- Within 5 miles of Burnham on Crouch
- North Fambridge train station is within 2.8 miles



Description

Situated discreetly on a delightful country road Surridges is extremely well presented on a fantastic plot of 13 acres (stls) offering the most enviable views of open countryside. The generous ground floor accommodation comprises a spacious hallway giving access to a stunning double aspect drawing room with beautiful sash windows and open fireplace, a formal double aspect dining room again with open fireplace, a great size study, a lovely kitchen breakfast room with oil fired aga, a further day room and conservatory both with lovely views of the formal gardens.

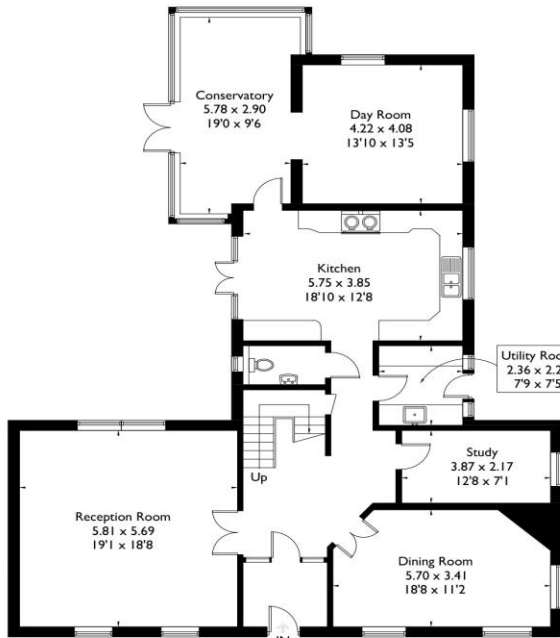
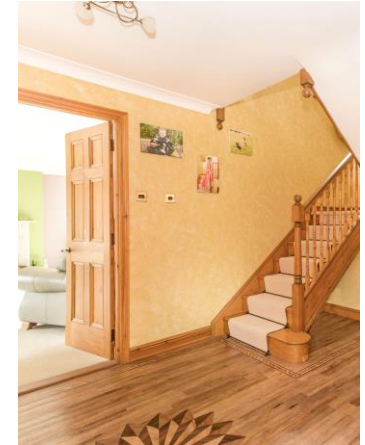
To the first floor there are five bedrooms of particular note the vast master suite offering living space, walk in wardrobe and good size en suite with bath. There are three further double bedrooms and a fifth single bedroom. A family bathroom bedroom completes the first floor accommodation.

Externally, Surridges benefits from an excellent quadruple garage with separate utility room and games room above with fitted kitchen and bathroom. Offering great ancillary accommodation. The grounds extend to in excess of 13 acres (stls) and offer great potential for equestrian use.

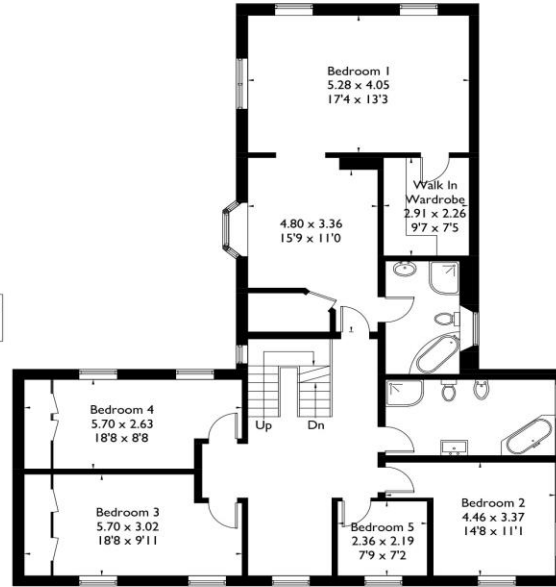


Surridges, Rectory Lane, Latchingdon, Chelmsford, CM3

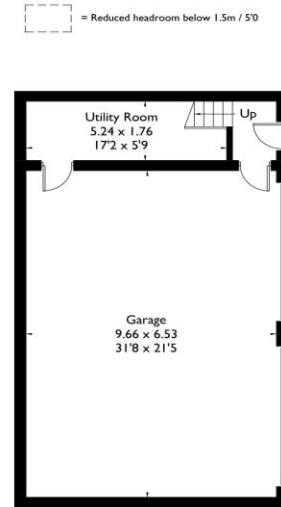
Approximate Gross Internal Area = 297.3 sq m / 3200 sq ft
 Garage = 140.9 sq m / 1517 sq ft
 Total = 438.2 sq m / 4717 sq ft



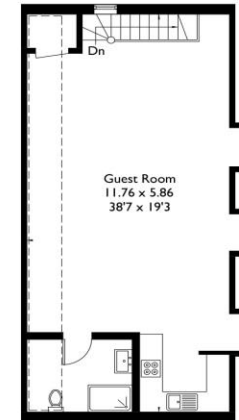
Ground Floor



First Floor



(Not Shown In Actual Location / Orientation)
Garage - Ground Floor



Garage - First Floor

FLOORPLANZ © 2016 0845 6344080 Ref: 171050

This plan is for layout guidance only. Drawn in accordance with RICS guidelines. Not drawn to scale unless stated. Windows & door openings are approximate. Whilst every care is taken in the preparation of this plan, please check all dimensions, shapes & compass bearings before making any decisions reliant upon them.

Consumer Protection from Unfair Trading Regulations 2008 and the Business Protection from Misleading Marketing Regulations 2008: Every effort has been made to ensure that consumers and or businesses are treated fairly and provided with accurate material information as required by law. It must be noted however that the agent has not tested any apparatus, equipment, fixture, fittings or services and does not verify they are in working order, fit for their purpose, or within the ownership of the seller or landlord, therefore the buyer or tenant must assume the information given is incorrect. Neither has the agent checked the legal documentation to verify the legal status of the property. A buyer or tenant must assume information is incorrect until it has been verified by their own solicitors or other advisers. Nothing concerning the type of construction, condition of the structure or its surroundings is to be implied from any image of the property.