

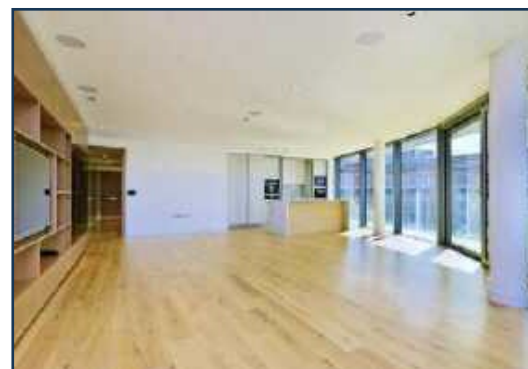


## GOLDHURST HOUSE, FULHAM REACH

**£3,200,000**

An exceptional 1,979 sq ft (184 sqm) apartment directly at the riverfront, available chain free through Prime London, with an exceptional glazed reception with space for dining and a breakfast bar, surrounded by floor to ceiling windows that lead out onto a private balcony. The property also benefits from secure parking. The master bedroom has a dressing room with built in storage as well as an en suite. The further two bedrooms also benefit from built in storage and en suites.

This air-conditioned property features many high-specification finishes, including a full integrated multi-room system for lighting, window dressing, heating and audio visual. The development itself offers a 24 hour concierge service, resident's club with Swimming Pool, Sauna, Spa, Steam Room, Treatment Room, Cinema, Snooker Room and Virtual Golf.



# GOLDHURST HOUSE, FULHAM REACH

